

KEYNOTES

- D.27 DEMOLISH AND REPLACE ENTIRE(E) CONCRETE PANEL (JOINT TO JOINT) FOR INSTALLATION OF ELECTRICAL LIGHTING CONDUITS
- E.27 (E) CONCRETE SLAB TO REMAIN
- E.28 (E) BRICK PAVEMENT WALKWAY

DESIGN PROFESSIONAL RESPONSIBLE CHARGE STATEMENT

THE P.O.T. IDENTIFIED IN THESE CONSTRUCTION DOCUMENTS IS COMPLIANT WITH THE CURRENT APPLICABLE CALIFORNIA BUILDING CODE ACCESSIBILITY PROVISIONS FOR PATH OF TRAVEL REQUIREMENTS FOR ALTERATIONS, ADDITIONS AND STRUCTURAL REPAIRS. AS PART OF THE DESIGN OF THIS PROJECT, THE P.O.T. WAS EXAMINED AND ANY ELEMENTS, COMPONENTS OR PORTIONS OF THE P.O.T. THAT WERE DETERMINED TO BE NONCOMPLIANT 1) HAVE BEEN IDENTIFIED AND 2) THE CORRECTIVE WORK NECESSARY TO BRING THEM INTO COMPLIANCE HAS BEEN INCLUDED WITHIN THE SCOPE OF THIS PROJECT'S WORK THROUGH DETAILS, DRAWINGS AND SPECIFICATIONS INCORPORATED INTO THESE CONSTRUCTION DOCUMENTS. ANY NONCOMPLIANT ELEMENTS, COMPONENTS OR PORTION OF THE P.O.T. THAT WILL NOT BE CORRECTED BY THIS PROJECT BASED ON VALUATION THRESHOLD LIMITATIONS OR A FINDING OF UNREASONABLE HARSHNESS ARE SO INDICATED IN THESE CONSTRUCTION DOCUMENTS.

DURING CONSTRUCTION, IF P.O.T. ITEMS WITHIN THE SCOPE OF THE PROJECT REPRESENTED AS CODE COMPLIANT ARE FOUND TO BE NONCONFORMING BEYOND REASONABLE CONSTRUCTION TOLERANCES, THEY SHALL BE BROUGHT INTO COMPLIANCE WITH THE CBC AS A PART OF THIS PROJECT BY MEANS OF A CONSTRUCTION CHANGE DOCUMENT.

PATH OF TRAVEL, TECHNICAL REQUIREMENTS FOR ACCESSIBLE ROUTE

"ACCESSIBLE PATH OF TRAVEL AS INDICATED ON PLAN IS A BARRIER-FREE ACCESS ROUTE WITHOUT ABRUPT LEVEL CHANGES EXCEEDING 1/4" IF BEVELED AT 1:2 MAXIMUM SLOPE OR VERTICAL LEVEL CHANGES NOT EXCEEDING 1/4" MAXIMUM AND AT LEAST 48" IN WIDTH. SURFACE IS STABLE, FIRM, AND SLIP-RESISTANT. CROSS-SLOPE SHALL NOT BE STEEPER THAN 1:48 AND SLOPE IN THE DIRECTION OF TRAVEL SHALL NOT BE STEEPER THAN 1:20. ACCESSIBLE PATH OF TRAVEL SHALL BE MAINTAINED FREE OF OVERHANGING OBSTRUCTIONS TO 80" MINIMUM AND FREE OF OBJECTS PROTRUDING MORE THAN 4" FROM THE WALL, ABOVE 27" AND LESS THAN 80" ABOVE THE FLOOR. ARCHITECT SHALL VERIFY THAT THERE ARE NO BARRIERS IN THE PATH OF TRAVEL."

NOTES:

1. ALL FIRE ACCESS ROADS, ACCESS GATES, FIRE HYDRANTS AND FIRE FLOW ARE EXISTING TO REMAIN UNMODIFIED UNLESS NOTED OTHERWISE.
2. REFER TO CIVIL PLANS FOR NEW CONCRETE SIDEWALK AND ASPHALT PAVING GRADES.
3. FOR WALKWAYS, THE SLOPE IN THE DIRECTION OF TRAVEL SHALL NOT EXCEED 1:20 GRADIENT (5.0%) AND CROSS SLOPE SHALL NOT EXCEED 1:50 GRADIENT (2.0%), WITH A MINIMUM WIDTH OF FORTY EIGHT INCHES (48"). CBC 11B-403.3 & 11B-403.5

PARKING SUMMARY

TOTAL SPACES: 10 TOTAL
 REQUIRED ACCESSIBLE SPACES: 1 VAN ACCESSIBLE

STANDARD ACCESSIBLE STALLS: 5 (E) PROVIDED A03-112836
 VAN ACCESSIBLE STALLS: 1 (E) PROVIDED A03-112836

LEGEND

- ACCESSIBLE PATH
- ACCESSIBLE PATH OF TRAVEL TO RIGHT OF WAY
- EXISTING BUILDING IN SCOPE
- AREA OF WORK
- (E) ASPHALT
- (E) CONCRETE
- (E) CONCRETE PAVERS
- (E) LANDSCAPE
- (E) TRUNCATED DOMES
- (N) PEDESTRIAN EMERGENCY LIGHTING

1 SITE PLAN
 1/16" = 1'-0"

DIVISION OF THE STATE ARCHITECT

MOORPARK COLLEGE

7075 CAMPUS RD
 MOORPARK, CA 93021
 TEL: (805) 378 - 1400

PROJECT TITLE AND SCHOOL LOCATION

MPC ART GALLERY

7075 CAMPUS RD
 MOORPARK, CA 93021

COMMISSIONED ARCHITECT

AMADOR

28328 AGOURA RD, 203 | AGOURA HILLS CA, 91301 | 955-558-4334

CONSULTANT

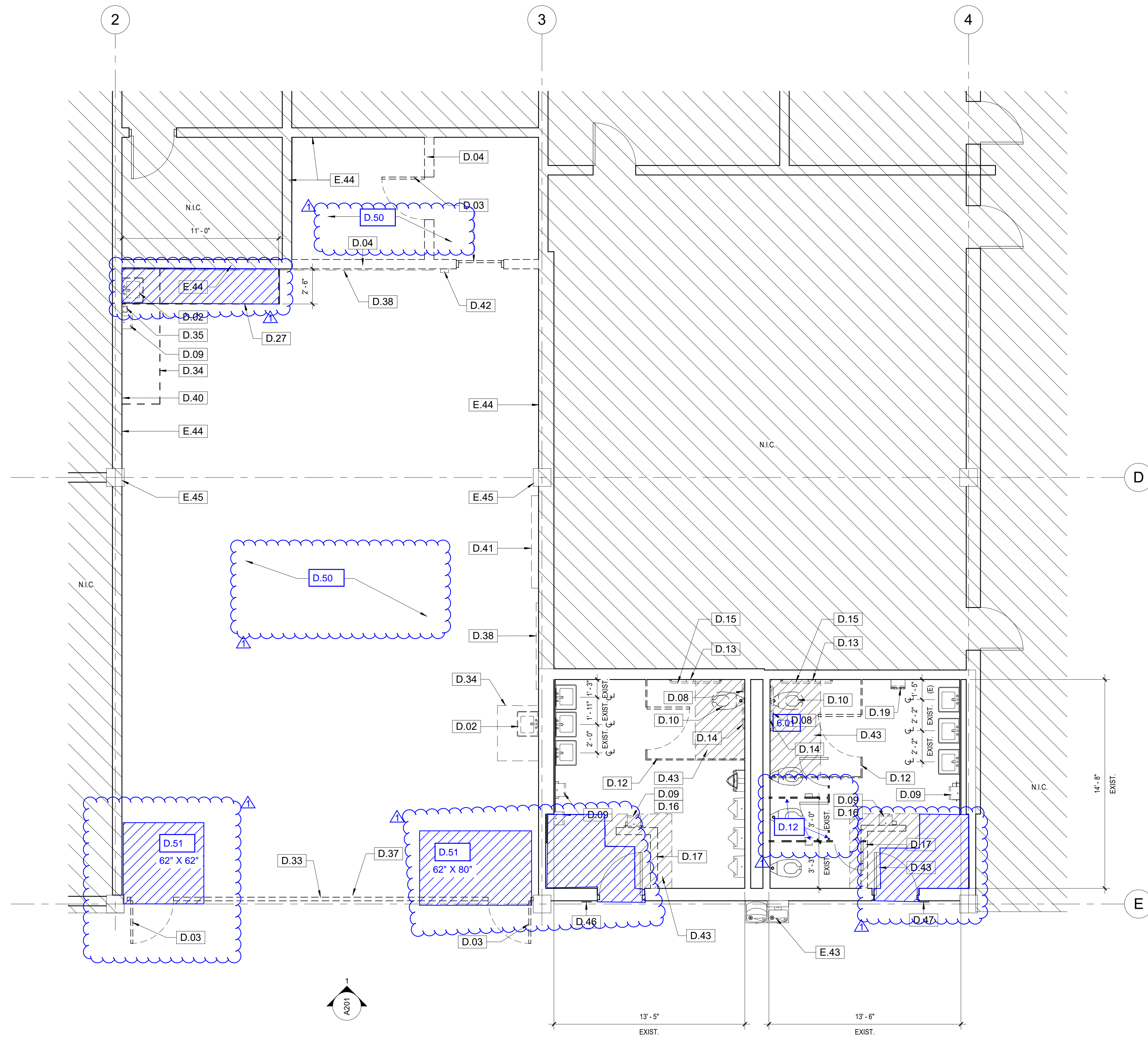
STAMPS/SEALS

ADDENDUM 01 8/15/2024
 1/30/24 DSA V1

SITE PLAN

PROJECT NO: 22-MPC-043 PROJECT ARCH: Designer
 DRAWN: Author CHECKED: Checker
 SHEET NUMBER: **A103**

DATE: 1/30/24 SHEET: ___ OF ___



KEYNOTES

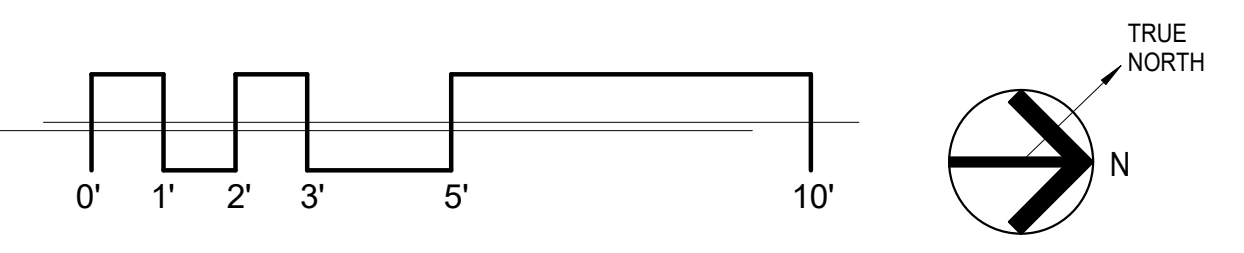
- D.02 DEMOLISH (E) SINK AND CAP PLUMBING FIXTURES
- D.03 DEMOLISH (E) DOOR & CAST IN STEEL THRESHOLD
- D.04 DEMOLISH (E) METAL STUD & GYP. BD. WALL & RUBBER WALL BASE
- D.08 DEMOLISH (E) 36" GRAB BAR
- D.09 DEMOLISH (E) PAPER TOWEL DISPENSER
- D.10 DEMOLISH (E) TOILET
- D.12 DEMOLISH (E) TOILET PARTITION
- D.13 DEMOLISH (E) TOILET PAPER DISPENSER
- D.14 DEMOLISH (E) TOILET SEAT COVER
- D.15 DEMOLISH (E) 42" GRAB BAR
- D.16 DEMOLISH (E) TRASH DISPENSER
- D.17 DEMOLISH (E) METAL STUD WALL WITH TILE FINISH
- D.19 REMOVE AND RELOCATE (E) SANITARY VENDOR
- D.27 DEMOLISH AND REPLACE ENTIRE(E) CONCRETE PANEL (JOINT TO JOINT) FOR INSTALLATION OF ELECTRICAL LIGHTING CONDUITS
- D.33 DEMOLISH (E) MASONRY WALL AND WINDOW SYSTEM ABOVE
- D.34 DEMOLISH (E) COUNTERTOP AND CABINETS
- D.35 DEMOLISH (E) SOAP DISPENSER
- D.37 DEMOLISH (E) CURTAINS AND TRACK
- D.38 DEMOLISH (E) WHITEBOARD
- D.40 DEMOLISH (E) ELEC. SWITCH & OUTLETS, SEE ELEC. DWGS.
- D.41 DEMOLISH (E) PROJECTION SCREEN
- D.42 DEMOLISH (E) F.A. DEVICE, SEE ELEC. DWGS.
- D.43 DEMOLISH (E) TILE FINISH & (E) CONC. SLAB
- D.46 REMOVE AND REPLACE (E) MEN'S RESTROOM WALL SIGNAGE
- D.47 REMOVE AND REPLACE (E) WOMEN'S RESTROOM WALL SIGNAGE
- E.36 (E) CONC. COL. BEYOND
- E.43 (E) DRINKING FOUNTAIN TO REMAIN
- E.44 (E) WALL TO REMAIN
- E.45 (E) CONC. COL.

- D.50 DEMOLISH (E) FLOOR FINISHES AND BEAD BLASH SURFACE IN PREPARATION FOR STAINING
- D.51 DEMOLISH (E) CONCRETE SLAB

LEGEND

- EXISTING WALL TO REMAIN
- DEMOLISH EXISTING CONSTRUCTION
- WALL - SEE WALL TYPES, SHEET A501
- 2-HOUR WALL - SEE WALL TYPES, SEE 4/A501
- WALL TYPE, SEE 5/A501
- ACCESSIBLE SINK

1 DEMO. FIRST FLOOR PLAN
1/4" = 1'-0"



7075 CAMPUS RD
MOORPARK, CA 93021
TEL: (805) 378 - 1400

PROJECT TITLE AND SCHOOL LOCATION

MPC ART GALLERY

7075 CAMPUS RD
MOORPARK, CA 93021

COMMISSIONED ARCHITECT

AMADÒR

28328 AGOURA RD, 203 | AGOURA HILLS, CA 91024 | 955-558-4334
amador@whitearchitects.com

CONSULTANT

STAMPS/SEALS



ADDENDUM 01 8/15/2024

1/30/24 DSA V1

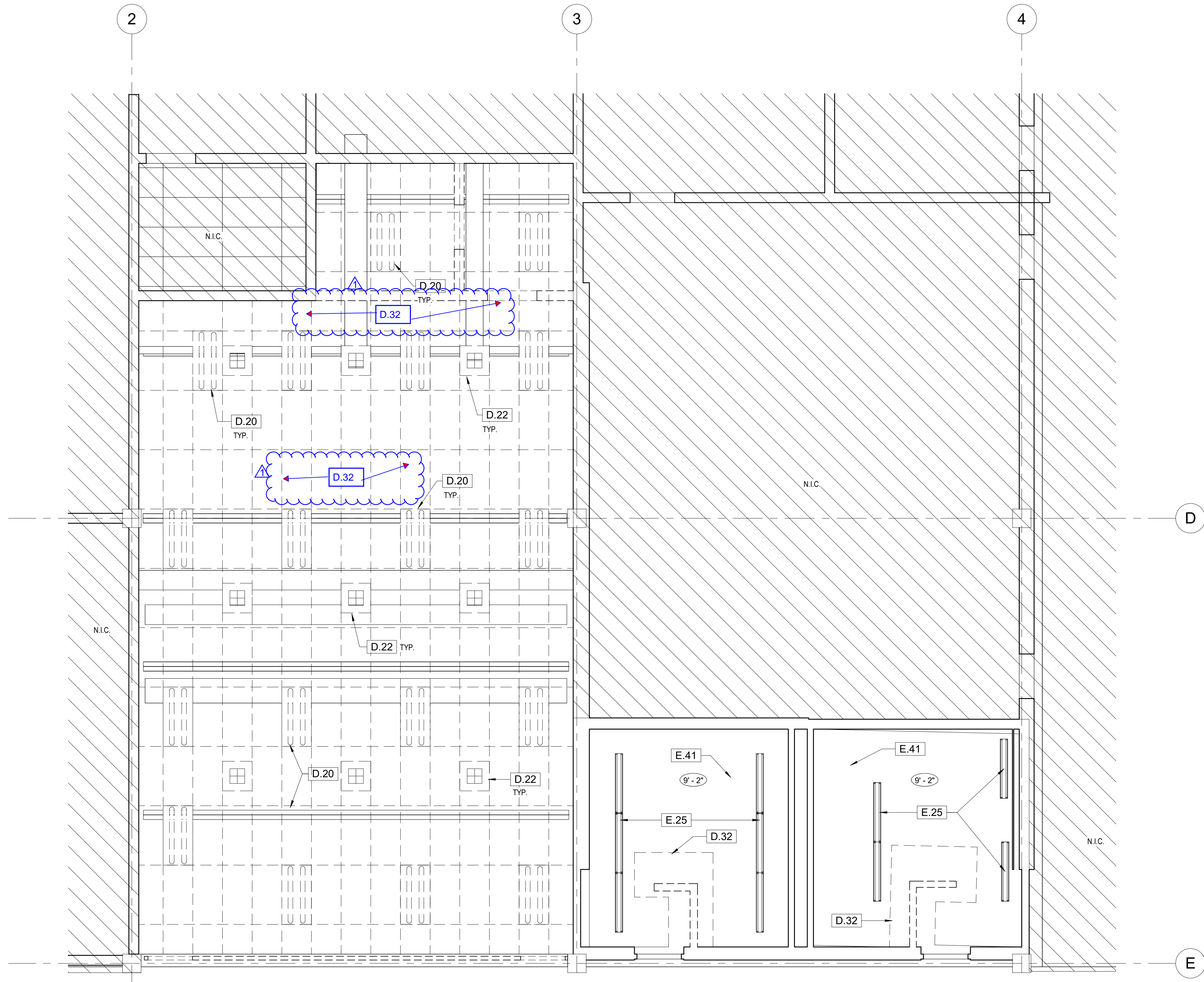
SHEET TITLE:

DEMOLITION FIRST FLOOR PLAN

PROJECT NO: 22-MPC-043 PROJECT ARCH: Designer
DRAWN: Author CHECKED: Checker
SHEET NUMBER:

A105

DATE: 1/30/24 SHEET: OF



KEYNOTES

- D.20 DEMOLISH (E) 2X4 TROFFER LIGHTING FIXTURE
- D.22 DEMOLISH (E) AIR GRILLE DIFFUSER
- D.32 DEMOLISH (E) CEILING TO EXTENT SHOWN
- E.25 (E) LIGHT FIXTURE TO REMAIN
- E.41 (E) GYPSUM PLASTER CEILING, PROTECT IN PLACE (E) 3/4" FURRING CHANNELS @ 16" O.C. AND 1 1/2" MAIN CHANNELS @ 4'-0" O.C.

DIVISION OF THE STATE ARCHITECT



MOORPARK COLLEGE

7075 CAMPUS RD
MOORPARK, CA 93021
TEL: (805) 378 - 1400

PROJECT TITLE AND SCHOOL LOCATION

MPC ART GALLERY

7075 CAMPUS RD
MOORPARK, CA 93021

COMMISSIONED ARCHITECT

AMADÒR

amadòr | white architects, inc.
28328 AGOURA RD, 203 | AGOURA HILLS CA, 91301 | 955-558-4334

CONSULTANT

STAMPS/SEALS



ADDENDUM 01 8/15/2024
1/30/24 DSA V1

SHEET TITLE:

DEMO. REFLECTED CEILING PLAN

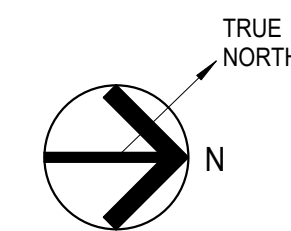
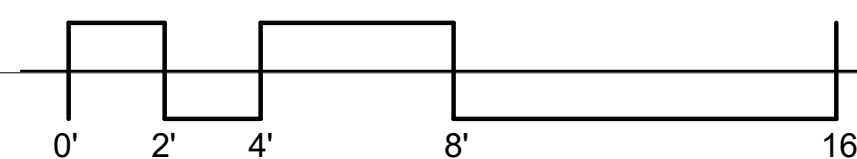
PROJECT NO: 22-MPC-043 PROJECT ARCH: Designer
DRAWN: MC CHECKED: Checker

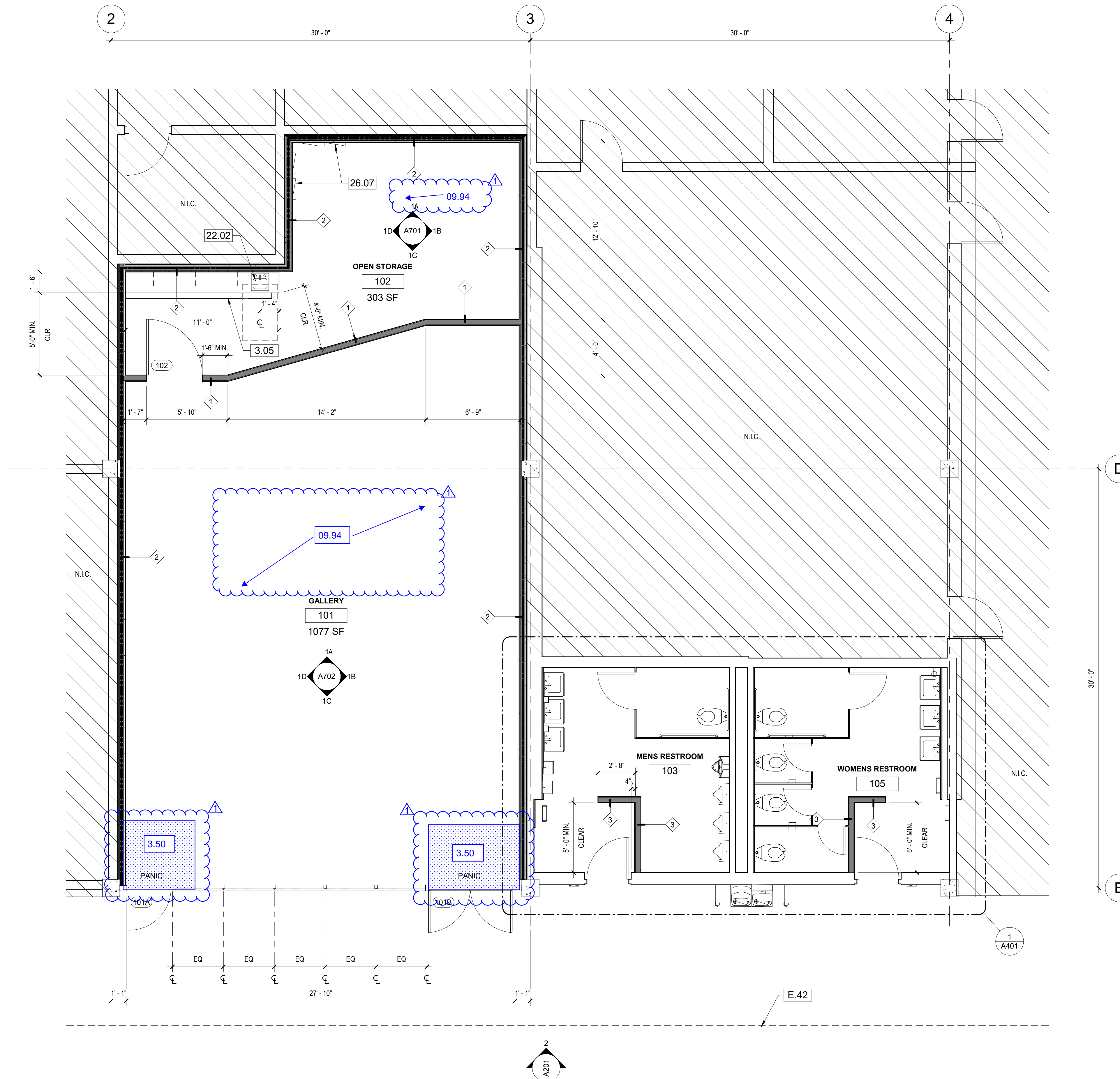
SHEET NUMBER:

A106

DATE: 1/30/24 SHEET: ___ OF ___

1 DEMO. FIRST FLOOR REFLECTED CEILING PLAN
1/4" = 1'-0"





1 FIRST FLOOR PLAN
1/4" = 1'-0"



KEYNOTES

- 3.05 CONCRETE SLAB & TILE FINISH
- 22.02 SINK WITH COUNTERTOP
- 26.07 ELEC. PANEL, SEE ELEC. DWGS.
- E.42 (E) FLOOR ABOVE

- 09.94 SEMI-TRANSPARENT STAIN AT CONCRETE FLOOR
- 3.50 4" THICK CONCRETE SLAB, SEE 20/S022

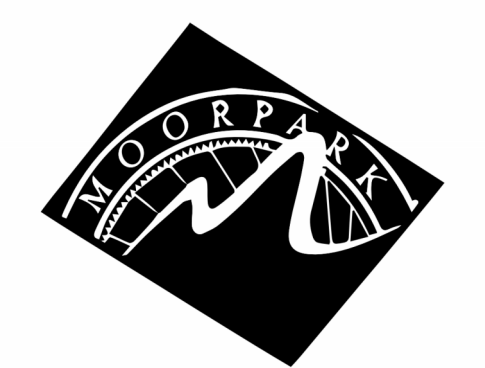
LEGEND

- EXISTING WALL TO REMAIN
- DEMOLISH EXISTING CONSTRUCTION
- WALL - SEE WALL TYPES, SHEET A501
- 2-HOUR WALL - SEE WALL TYPES, SEE 4/A501
- WALL TYPE, SEE 5/A501
- ACCESSIBLE SINK

NOTES:

1. MINIMUM MANUEVERING CLEARANCES AT DOORS SHALL BE LEVEL AND CLEAR. THE LEVEL AREA SHALL HAVE A LENGTH IN THE DIRECTION OF THE DOOR SWING OF AT LEAST 60 INCHES AND THE LENGTH OPPOSITE THE DIRECTION OF DOOR SWING OF 48 INCHES AS MEASURED AT RIGHT ANGLES TO THE PLANE OF THE DOOR IN ITS CLOSED POSITION. CBC 11B-404.2.4.
2. DOOR JAMBS AT CORNERS OF ROOMS SHALL BE 4" MIN. FROM WALL INSIDE CORNER U.N.O.
3. ALL DIMENSIONS ARE TAKEN FROM FACE OF EXISTING CONSTRUCTION OR FACE OF STUD FOR NEW CONSTRUCTION, UNLESS NOTED OTHERWISE.

DIVISION OF THE STATE ARCHITECT



MOORPARK COLLEGE

7075 CAMPUS RD
MOORPARK, CA 93021
TEL: (805) 378 - 1400

PROJECT TITLE AND SCHOOL LOCATION

MPC ART GALLERY

7075 CAMPUS RD
MOORPARK, CA 93021

COMMISSIONED ARCHITECT

AMADÒR

28328 AGOURA RD, 203 | AGOURA HILLS CA, 91301 | 955-558-4334
amadór@whittlearchitects.com

CONSULTANT

STAMPS/SEALS



ADDENDUM 01 8/15/2024
1/30/24 DSA V1

SHEET TITLE:

FIRST FLOOR PLAN

PROJECT NO: 22-MPC-043 PROJECT ARCH: Designer
DRAWN: Author CHECKED: Checker
SHEET NUMBER:

A107

DATE: 1/30/24 SHEET: ___ OF ___



7075 CAMPUS RD
MOORPARK, CA 93021
TEL: (805) 378 - 1400

PROJECT TITLE AND SCHOOL LOCATION

MPC ART GALLERY

7075 CAMPUS RD
MOORPARK, CA 93021

COMMISSIONED ARCHITECT

AMADÒR

28328 AGOURA RD, 203 | AGOURA HILLS CA, 91301 | 955-558-4334
amadador@whitell.com

CONSULTANT

STAMPS/SEALS



ADDENDUM 01 8/15/2024

1/30/24 DSA V1

SHEET TITLE:

ENLARGED RESTROOMS FLOOR PLANS & ELEVATIONS

PROJECT NO: 22-MPC-043 PROJECT ARCH: Designer
DRAWN: Author CHECKED: Checker
SHEET NUMBER:

A401

DATE: 1/30/24 SHEET: ___ OF ___

KEYNOTES

- 3.05 CONCRETE SLAB & TILE FINISH
- 5.02 DRINKING FOUNTAIN WING GUARD, SEE DETAIL 02/A501
- 9.01 4" CERAMIC TILE PATCHING, MATCH (E) FINISH. SEE FINISH SCHEDULE.
- 9.02 4" CERAMIC TILE OVER CEMENTITIOUS BACKING BOARD, TYP. SEE DETAIL 04/A502
- 9.03 5/8" GYP. BOARD, PAINTED
- 9.04 6" CERAMIC TILE BASE, MATCH (E) FINISH. SEE FINISH SCHEDULE.
- 10.03 36" GRAB BAR, SEE 8/G003 FOR MOUNTING HEIGHTS, TYP. SEE DETAIL 05/A502. FOR THRU-BOLT ANCHORAGE TO TOILET PARTITION, SEE SPEC 10_2813, 3.02.
- 10.04 42" GRAB BAR MOUNTED ON TOILET PARTITION - SEE DETAIL 4/A401. MOUNTING HEIGHT CENTERLINE AT 34 1/2" A.F.F.
- 10.05 TOILET PARTITION, SEE DETAIL 02/A502
- 10.07 TOILET SEAT COVER DISPENSER, BACKING SEE 03/A502
- 10.09 TOILET PAPER DISPENSER
- 10.10 ELECTRIC HAND DRYER
- 10.13 MEN'S RESTROOM DOOR SIGNAGE, SEE 9-C1/A601
- 10.14 WOMEN'S RESTROOM DOOR SIGNAGE, SEE 9-C2/A601
- 10.15 MEN'S RESTROOM WALL SIGNAGE, SEE 9-C4/A601
- 10.16 WOMEN'S RESTROOM WALL SIGNAGE, SEE 9-C5/A601
- 22.01 ACCESSIBLE WATER CLOSET.
- E.01 (E) ACCESSIBLE URINAL
- E.02 (E) TOILET
- E.03 (E) ACCESSIBLE MIRROR
- E.04 (E) ACCESSIBLE SINK
- E.06 (E) TOILET SEAT COVER 05
- E.08 (E) LAVATORY SINK
- E.09 (E) SOAP DISPENSER
- E.18 (E) ACCESSIBLE DRINKING FOUNTAIN ELKAY MODEL HIGH-LOW WITH BOTTLE FILLER
- E.19 (E) URINAL
- E.20 (E) ACCESS PANEL
- E.21 (E) MIRROR
- E.22 (E) NO SMOKING SIGN
- E.23 (E) FIRE ALARM
- E.24 (E) ELECTRICAL OUTLET

TOILET ACCESSORIES:
WOMENS TOILET STALLS TO RECEIVE TOILET SEAT COVER DISPENSERS, FEMININE NAPKIN DISPOSAL UNITS - ADD TOILET PAPER DISPENSERS AT ACCESSIBLE STALL.
MENS TOILET STALLS TO RECEIVE TOILET SEAT COVER DISPENSERS, - ADD TOILET PAPER DISPENSERS AT ACCESSIBLE STALL.

LEGEND

- EXISTING WALL TO REMAIN
- DEMOLISH EXISTING CONSTRUCTION
- WALL - SEE WALL TYPES, SHEET A501
- 2-HOUR WALL - SEE WALL TYPES, SEE 4/A501
- WALL TYPE, SEE 5/A501
- ACCESSIBLE SINK

NOTE: DIMENSIONS IN RESTROOM PLANS ARE TAKEN FROM FACE OF FINISH, U.N.O.

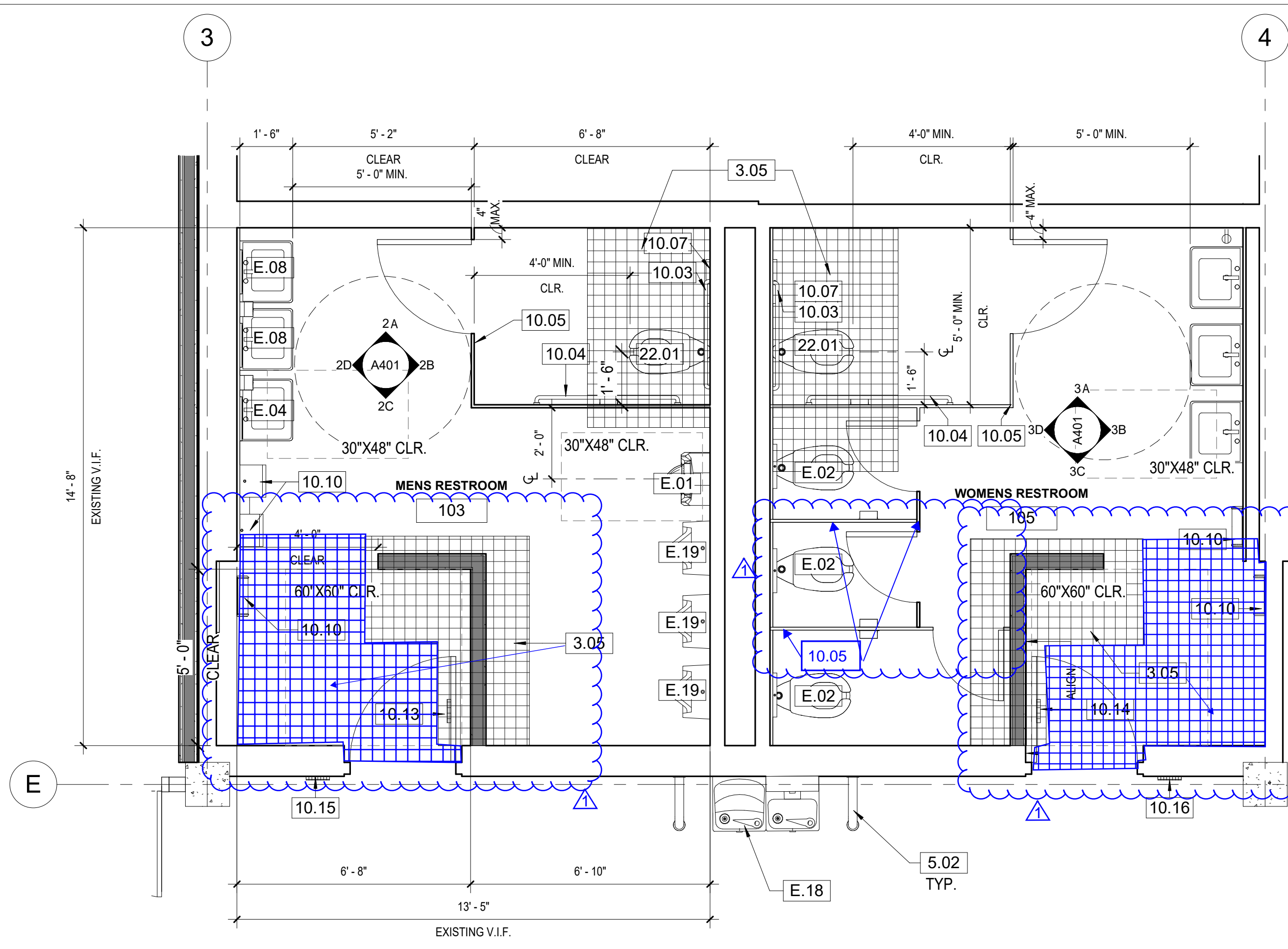
42" GRAB BAR WITH MID-POINT BRACKET FASTENED TO TOILET PARTITION WITH 3" DIA. STAINLESS STEEL BACK PLATES WITH STUDS, COUPLINGS, AND (3) 1/4" DIA. STAINLESS STEEL MACHINE SCREWS PER BRACKET

CONTINUOUS T BRACKET TO WALL

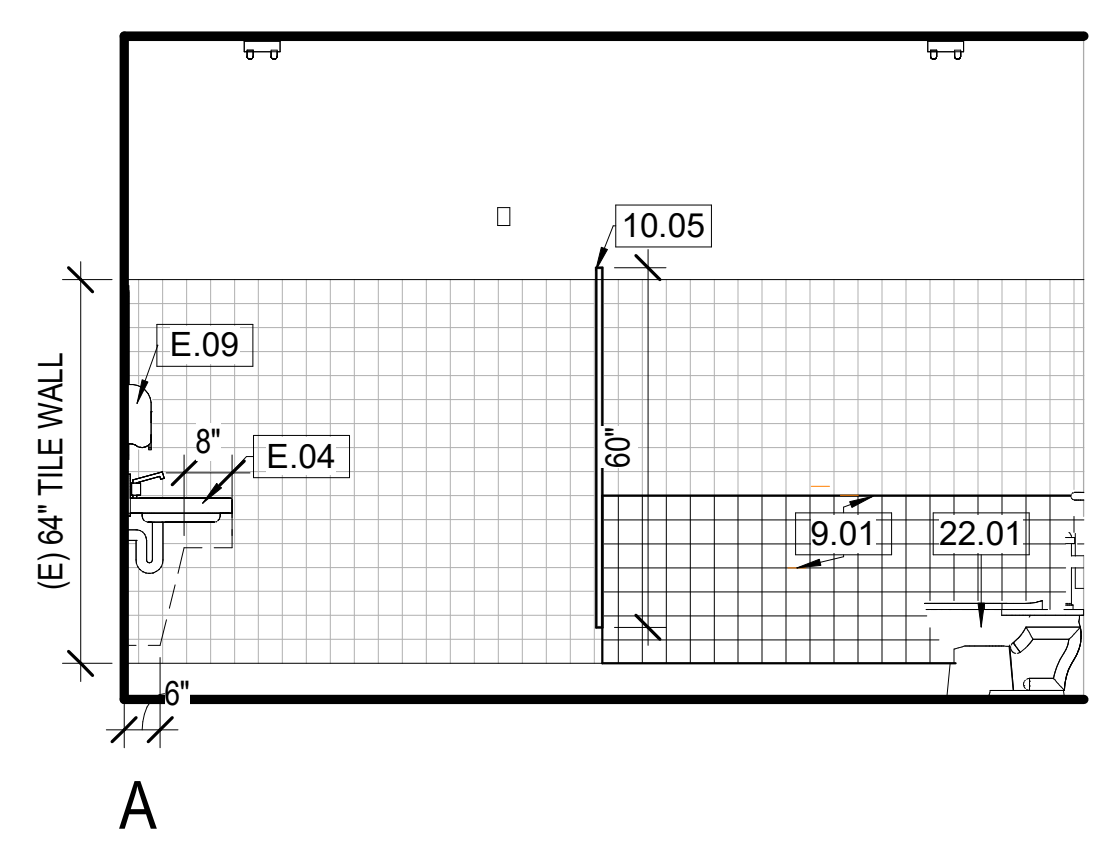
OVERHEAD BRACING, TYP.

12" WIDE PILASTER AT GRAB BAR ANCHORED TO FLOOR PER 2/A502

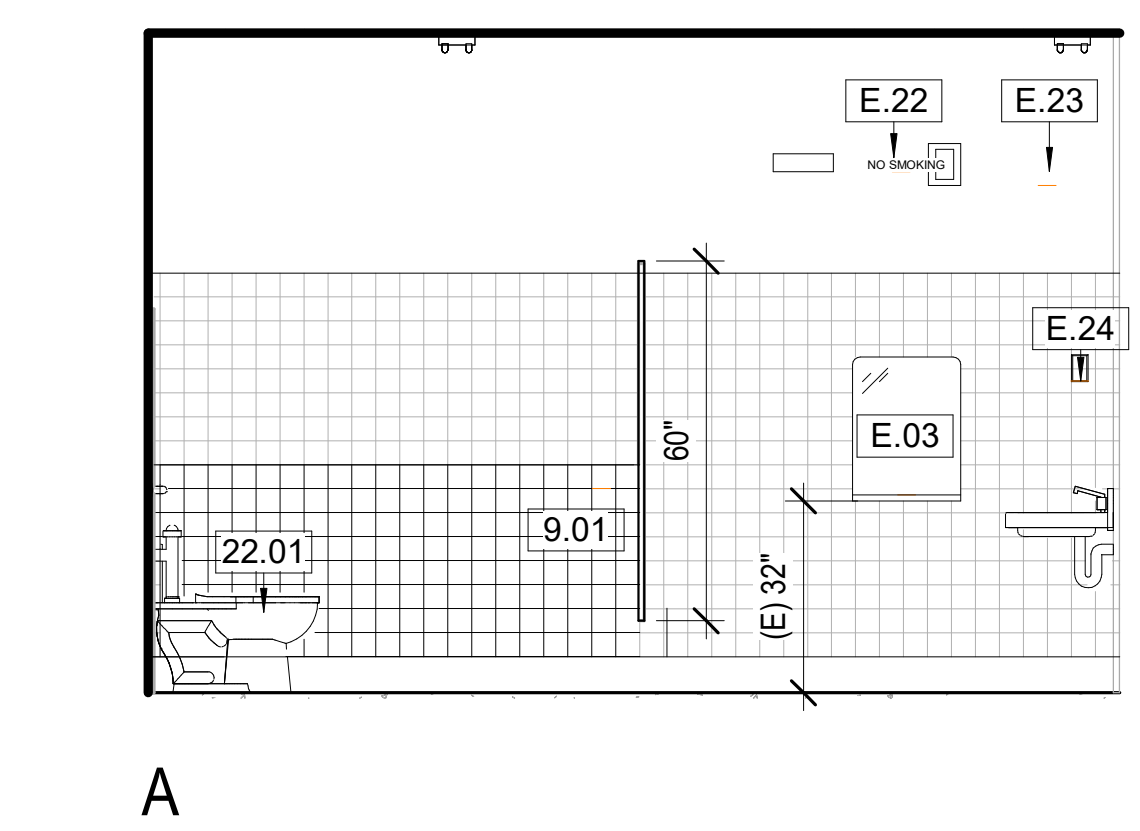
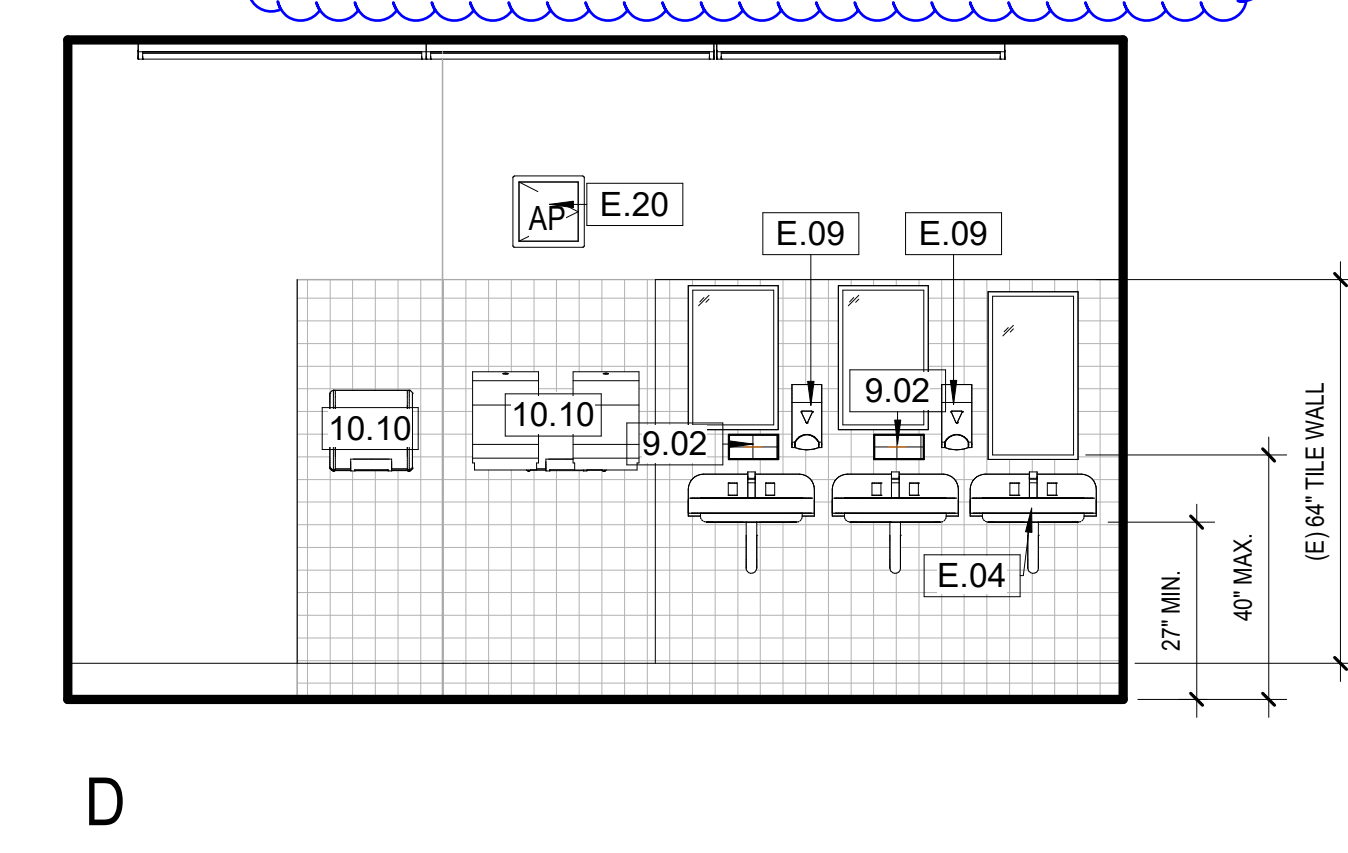
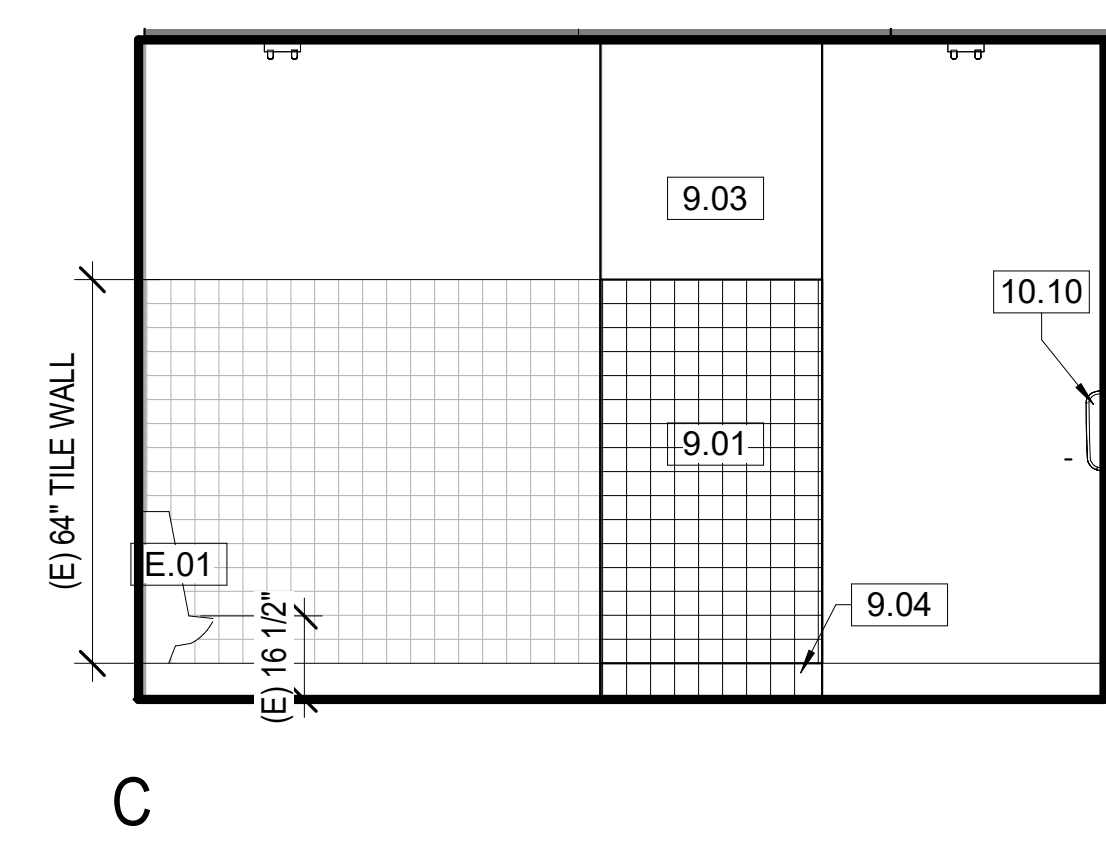
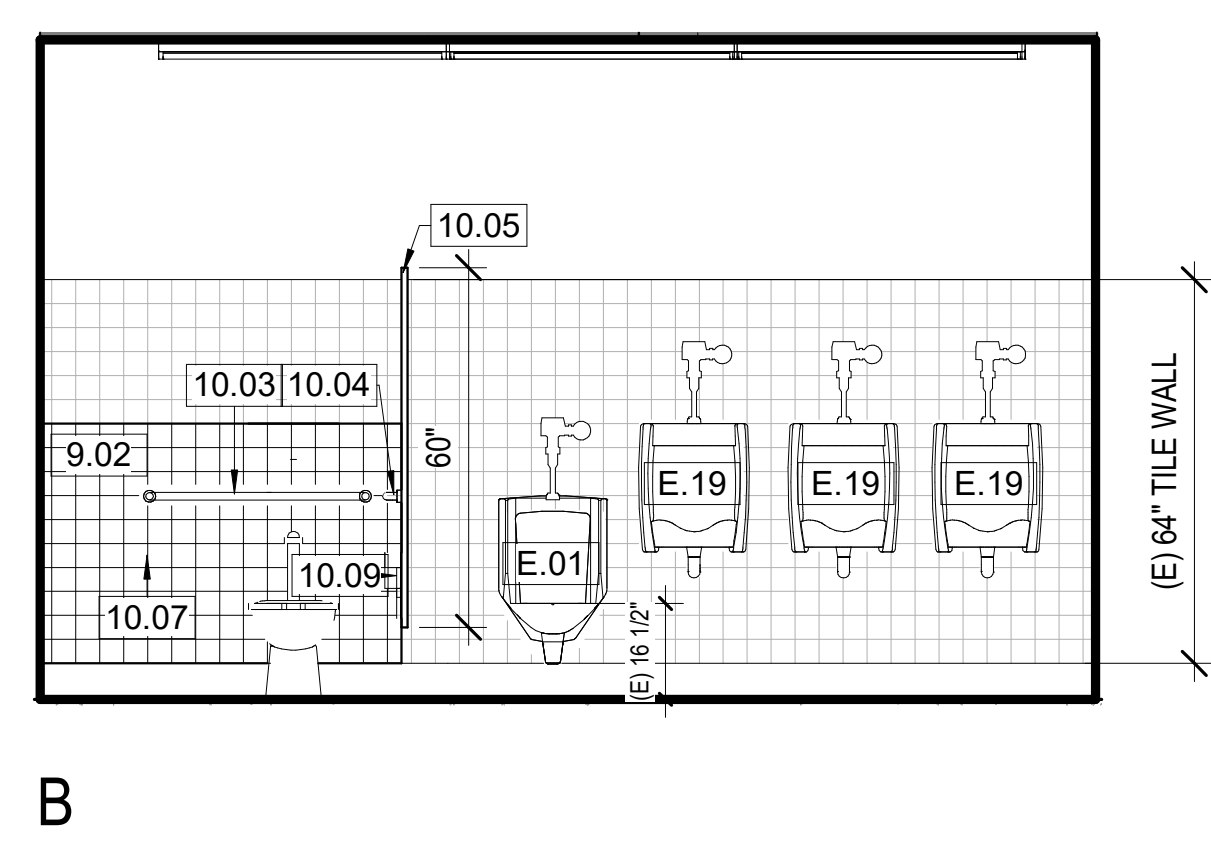
4 PARTITION MOUNTED GRAB BAR



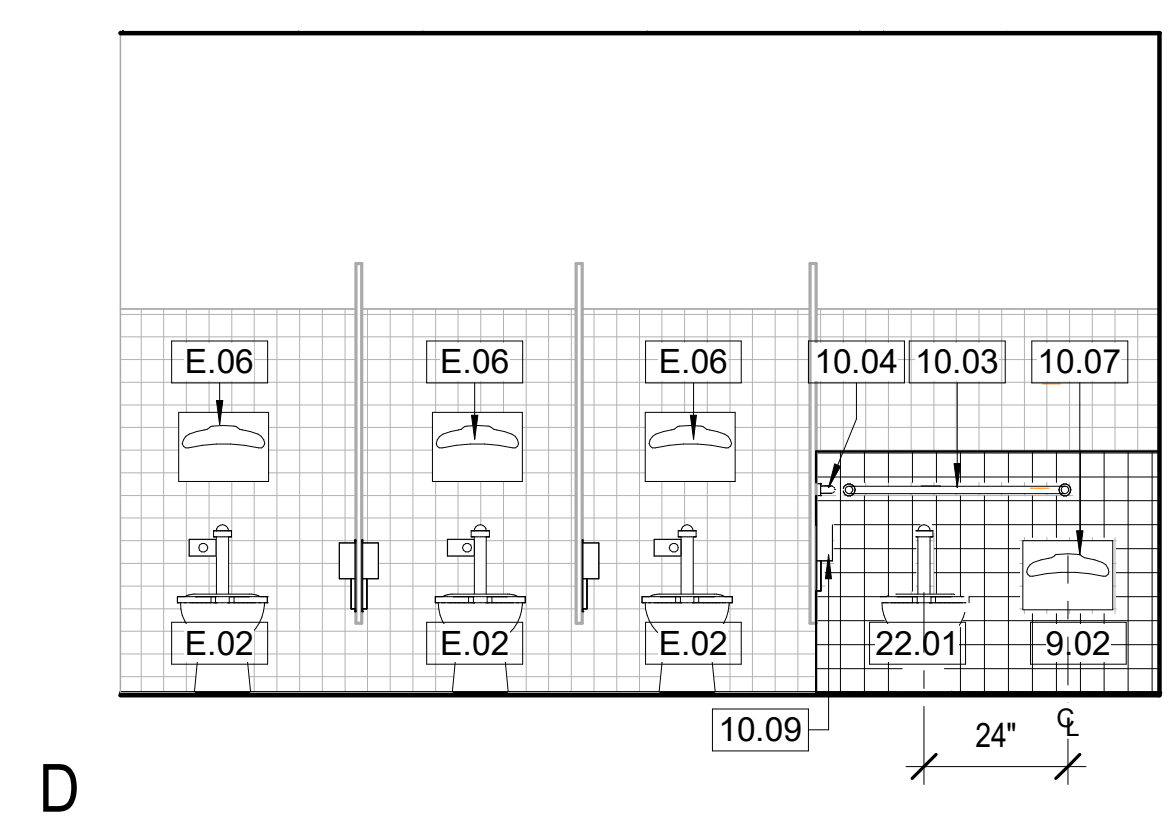
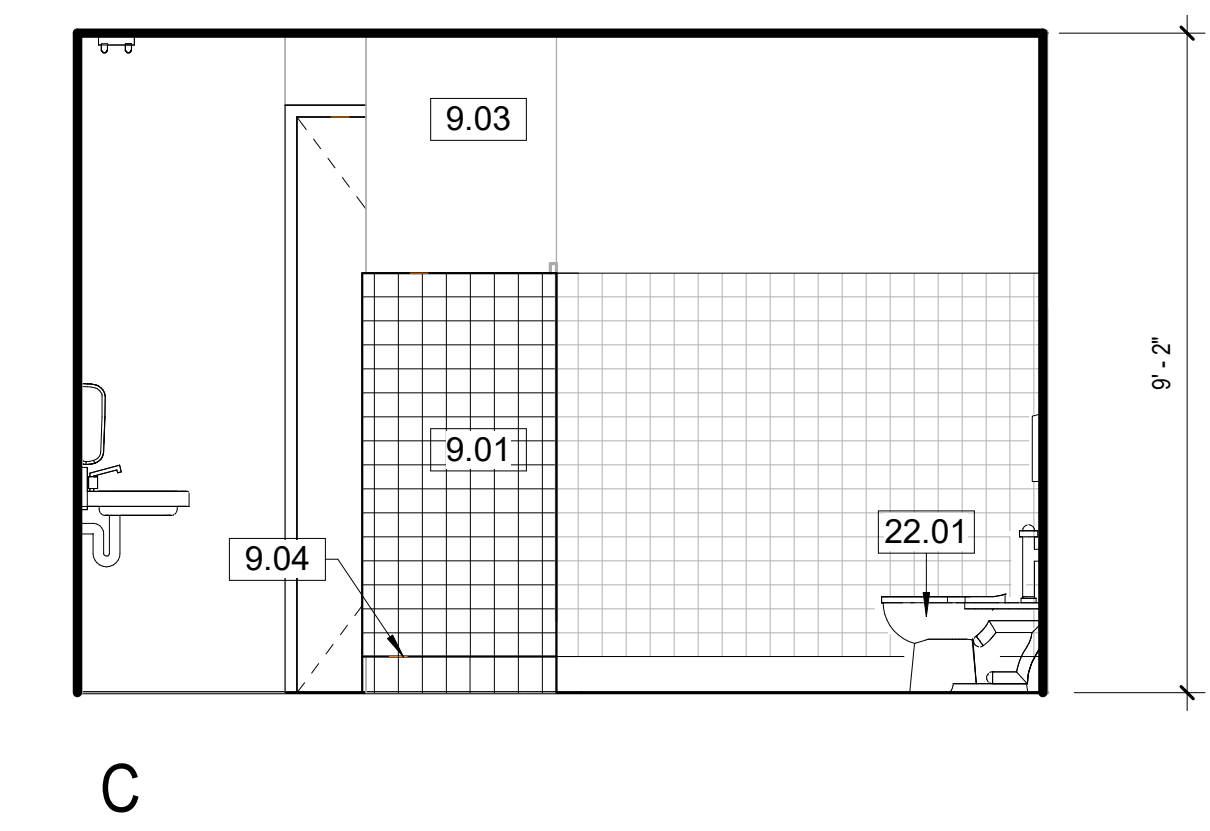
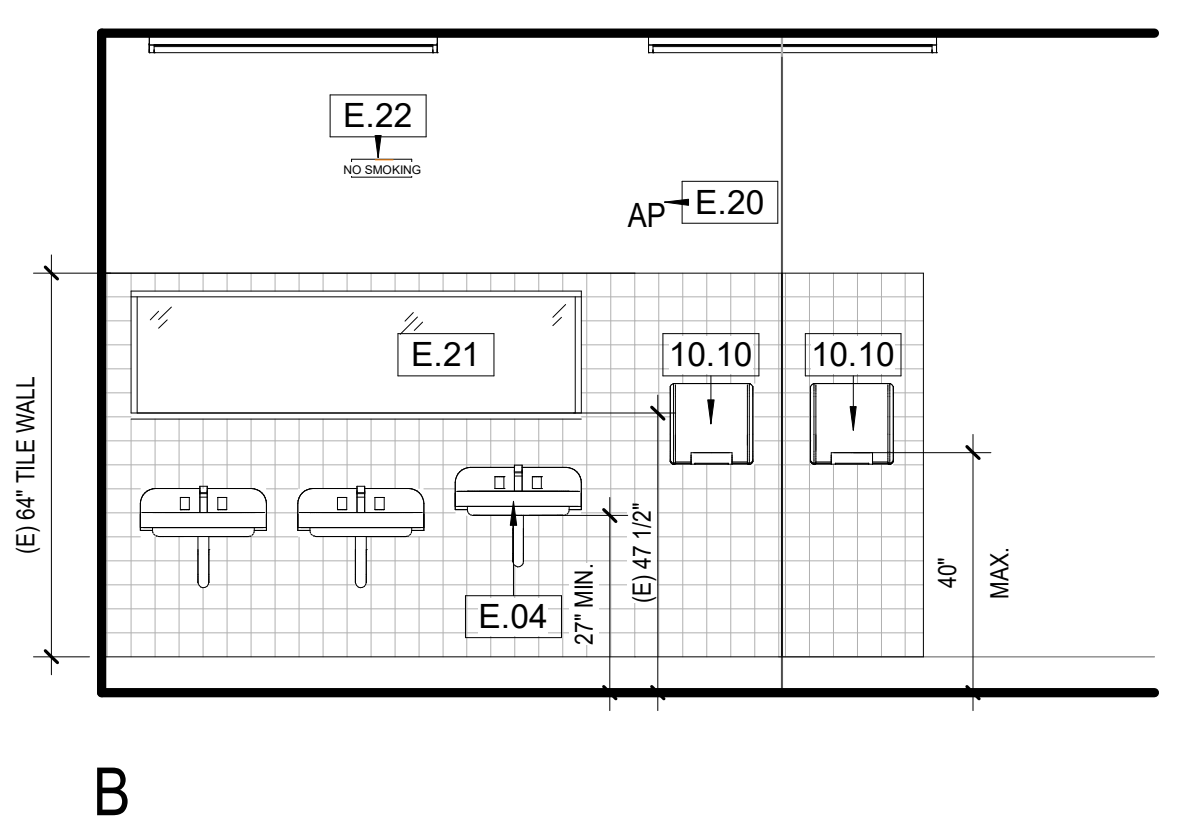
1 RESTROOMS FLOOR PLAN
3/8" = 1'-0"



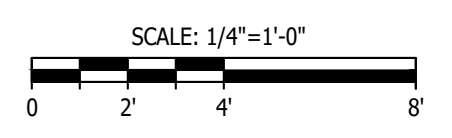
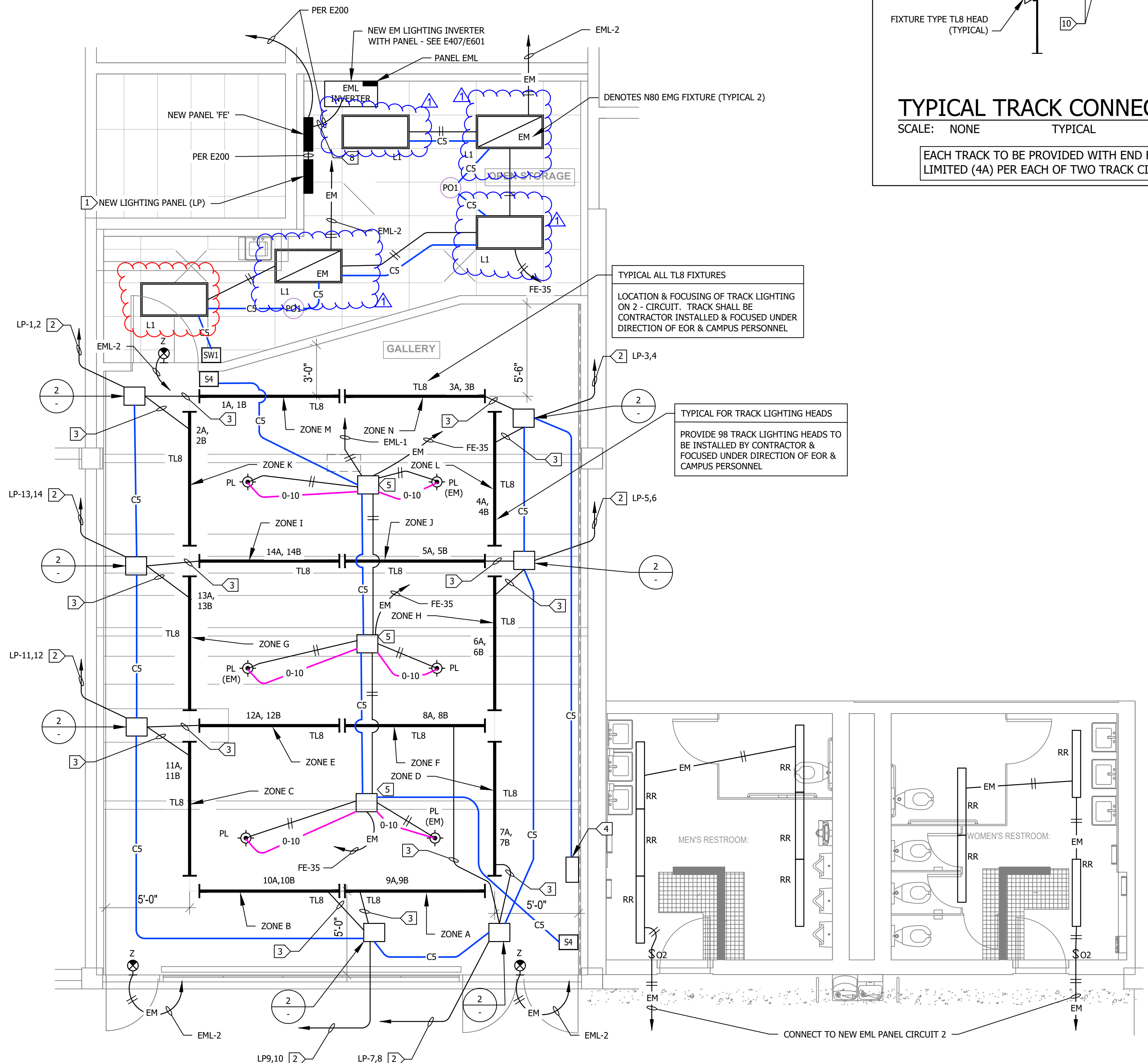
2 MENS RESTROOM - NORTH
3/8" = 1'-0"



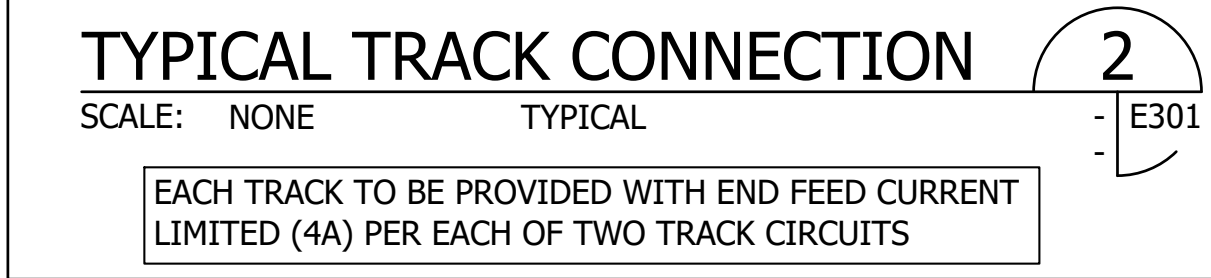
3 WOMENS RESTROOM NORTH
3/8" = 1'-0"



TIME: 9:41 am
 DATE: 14 August 2024
 PATHNAME: G:\22\568\EL\Sheets
 DRAWING FILENAME: 22-568 E301
 DRAFTER: CM02



NEW ART GALLERY LIGHTING PLAN
 SCALE: 1/4"=1'-0"
 1
 E301



TYPICAL TRACK CONNECTION
 SCALE: NONE TYPICAL
 2
 E301

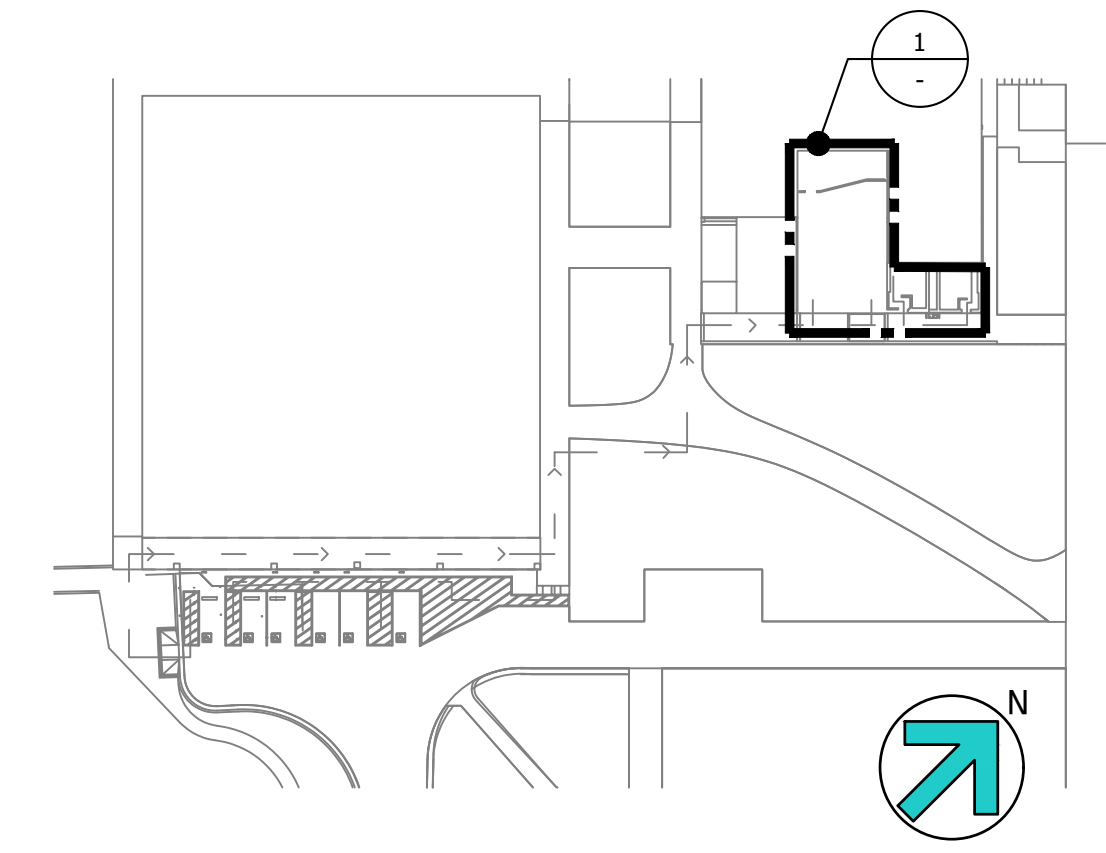
SHEET NOTES:

- CONTRACTOR SHALL VERIFY LOCATION, CEILING TYPE, TRIM, AND REQUIREMENTS OF ALL LIGHT FIXTURES AND CONTROL PRIOR TO BID PROPOSAL, ROUGH-IN, AND FINISH INSTALLATION.
- CONTRACTOR SHALL FURNISH AND INSTALL PULL BOXES AS REQUIRED TO INSTALL CONDUCTORS PER CONDUCTOR MANUFACTURERS RECOMMENDATIONS, PER THE NATIONAL ELECTRICAL CODE AND PER LOCAL AUTHORITIES HAVING JURISDICTION.
- 3/4" CONDUIT MINIMUM UNLESS OTHERWISE NOTED.
- ALL LIGHTING FIXTURES SHALL BE SECONDARILY SUPPORTED WITH SAFETY CABLES, PROVIDED BY CONTRACTOR.
- VERIFY LOCATION OF ALL DEVICES ON ARCHITECTURAL PLANS.
- ALL EXIT SIGNS ARE +12" TO CENTER LINE OF FIXTURE ABOVE DOOR FRAME UNLESS OTHERWISE NOTED.
- CONTRACTOR SHALL PROVIDE ALL BACKING, BRACKETS, SUPPORTS, AND MOUNTING HARDWARE NECESSARY TO PROPERLY INSTALL LIGHTING FIXTURES.
- VERIFY THE EXACT ROUTING OF ALL EXPOSED CONDUIT WITH OWNER PRIOR TO INSTALLATION.
- COORDINATE WORK WITH OTHER TRADES. OBTAIN ALL DRAWINGS THAT WILL REQUIRE COORDINATION AND PROVIDE ALL ELECTRICAL CONNECTIONS, DEVICES, AND WIRING REQUIRED WHETHER SHOWN ON ELECTRICAL DRAWINGS OR NOT.
- PROVIDE CODE SIZED EQUIPMENT GROUNDING CONDUCTOR IN ALL LIGHTING SYSTEM CONDUITS.
- VERIFY AND PROVIDE JUNCTION BOXES, CONDUIT, DISCONNECT SWITCH, AND WIRING ASSOCIATED WITH SIGNAGE/GRAPHICS ON GRAPHICS/SIGNAGE DRAWINGS.
- ALL LIGHTING FIXTURES, EXCEPT EMERGENCY, SHALL BE CONTROLLED BY DIMMER RACK, POWER LINK PANELBOARD, PHOTOCELL, TIMECLOCK, OR LIGHTING CONTROL RELAY SYSTEM UNLESS OTHERWISE NOTED.

KEY NOTES:

- 1 NEW LIGHTING PANEL SEE E200.
- 2 NEW 3/4" - 4 #10 & 1 #12 GND TO 1 MODULE & CIRCUITS AS NOTED PER LEGEND BELOW.
- 3 NEW 3/4" - 4 #10 & 1 #12 GND & PURPLE & GRAY FOR 0-10V (EACH CIRCUIT OF OF DUAL TRACK.)
- 4 NEW FRESCO TOUCH SCREEN CONTROLLER (FEED FROM FE-39 & CONNECT PER E406).
- 5 NEW POWER PACK NPP 16EM.
- 6 NEW FE-21.
- 7 PER DETAIL 2.
- 8 (N) 1" - 3 #6 & 1 #10 GND.
- 9 NEW 3/4" - 2 #10 & 1 #12 GND.
- 10 NEW 3/4" - 2 #10 & 1 #12 GND & PURPLE & GRAY FOR 0-10V (EACH CIRCUIT OF OF DUAL TRACK.)

KEY MAP



DIVISION OF THE STATE ARCHITECT



7075 CAMPUS RD
 MOORPARK, CA 93021
 TEL: (805) 378-1400

PROJECT TITLE AND SCHOOL LOCATION

**MOORPARK COLLEGE
 ART GALLERY AT
 TECHNOLOGY CENTER**

7075 CAMPUS ROAD
 MOORPARK, CA 91320

COMMISSIONED ARCHITECT



28328 AGOURA RD, 203 | AGOURA HILLS CA, 91301 | 905-658-4334
 amador.white.architects, inc.

CONSULTANT
LUCCI & ASSOCIATES INC.
 CONSULTING ELECTRICAL ENGINEERS
 3251 CORTE MALPASO, #511
 CAMARILLO, CA 93012-8094
 (805) 389-6520 FAX (805) 389-6519
 LUCCHI & ASSOCIATES, INC. reserve their commonlaw copyright and other property rights in these plans. These plans and drawings are not to be reproduced, changed, or copied in any form or manner whatsoever without first obtaining the expressed written permission and consent of LUCCHI & ASSOC. INC. nor are they to be assigned to any third party without obtaining said written permission and consent.

STAMPS/SEALS



ADDENDUM 01 8/15/2024

NEW LIGHTING PLAN

PROJECT NO: 22-MPC-043-E PROJECT ARCH: Designer
 DRAWN: D.S. / L.K. CHECKED: KEN LUCCI

E301

DATE: 04/01/2024 SHEET: OF

SUBMITTAL: FD™, FDS™ SERIES - FIRE RATED FLUSH ACCESS DOORS FOR 2 HR WALLS

JL Industries' innovative line of fire-rated access panels for every type of installation meets testing standards: UL10B, CANULC-S104, ASTM E152. Access panels are rated for 1-1/2 hours for 2 hour fire barriers for vertical surfaces in sizes up to 48" x 48" (24" x 48" for Heavy Gauge). All models feature a 2" thick insulated door, slam latch with spring-assisted closer and welded-on masonry anchors. Minimum size 8" x 4".

FD - Standard Panel (Wall)
 Frame & Trim: 16 gauge steel with a paintable 1" wall flange.
 Door: 2" thick, insulated 22 gauge steel with continuous hinge, universal lock.
 Finish: White powder coat.

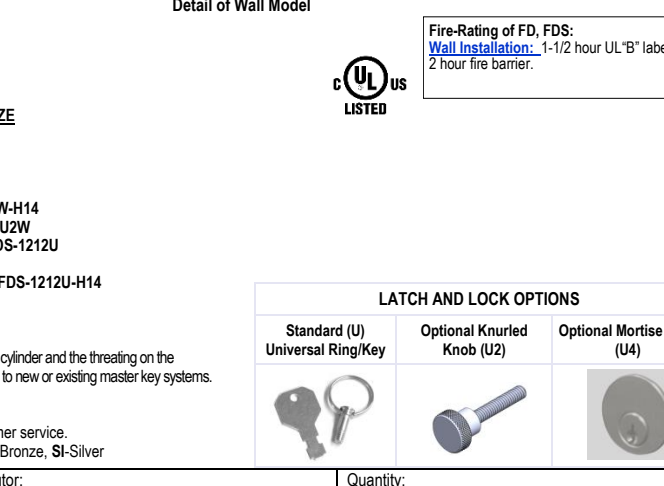
FDS - Stainless Steel (Wall)
 Frame & Trim: 16 gauge stainless steel with 1" wall flange.
 Door: 2" thick, insulated 22 gauge stainless steel with continuous hinge, universal lock.
 Finish: 304 Stainless steel, #4 Satin Finish.

FD - Heavy Gauge and Security (Wall Maximum Size 24 x 48)
 Frame & Trim: 16 gauge steel with paintable 1" wall flange.
 Door: 2" thick, insulated 16 gauge steel with continuous hinge, universal lock.
 Finish: White powder coat.



STEP 1: SELECT SIZE AND QUANTITY ON CHART ON PAGE 2, OR ENTER CUSTOM SIZE
STEP 2: SELECT MATERIAL
 FD Standard Steel with 16 gauge door and 16 gauge frame. Example: FD-1212W-48
SELECT OPTIONAL MATERIAL BELOW AT ADDITIONAL COST
 FD Steel with 16 gauge door and frame. Example: FD-1212W-42
 FD Heavy Gauge Steel with 16 gauge door and 14 gauge frame. Example: FD-2442W-48H4
 FD Corrosion Resistant Steel with 16 gauge door and 16 gauge frame. Example: FDS-1212W-48
 FD Stainless Steel Construction with 20 gauge door and 18 gauge frame. Example: FDS-1212W-48
 FD Stainless Steel with 16 gauge door and 16 gauge frame. Example: FDS-1212W-48H4
 FD Heavy Gauge Stainless Steel with 16 gauge door and 14 gauge frame. Example: FDS-1212W-48H4

STEP 3: SELECT LOCK AND OPTION CODE
 (U) Standard Universal Lock with turn ring and key.
 (U3) Mortise lock prep for lock to attach. The preparation will accept a 1" diameter mortise cylinder and the finishing on the cylinder must be 1/8" long. Can't be used with 1/2" or 1/4" thick. This device is a key to new or existing metal key systems.
 (U4) Mortise lock prep with model (6631) installed.
 (U5) Slam latch with mortise lock.
 Color Code: see selection on page 2 or website, custom colors contact customer service.
 G-Gray, R-Red, BK-Black, PB-1st Black, B-Sand, AB-AMS Beige, SB-Fat Beige, B-Bronze, SS-Silver



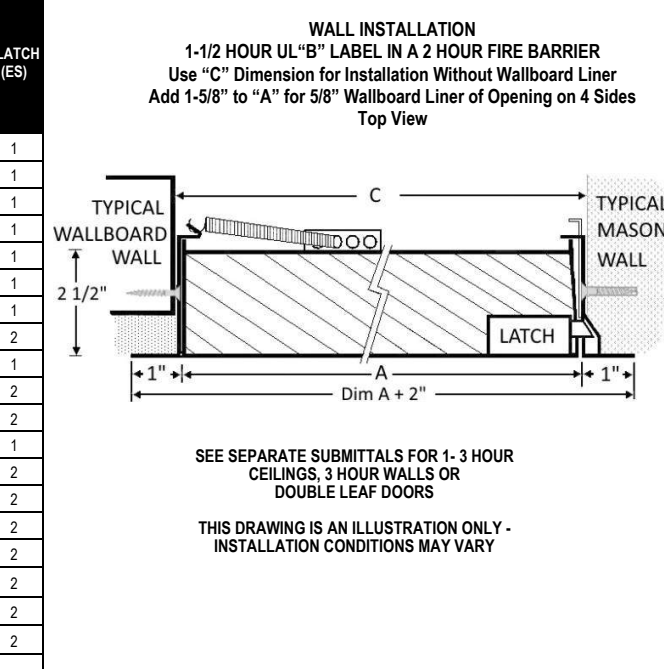
JL INDUSTRIES

Contractor:	Quantity:
Model #:	Approved By:
Architect:	Date:
Project:	

HEADQUARTERS: 8702 NEWTON AVE S, BLOOMINGTON, MN 55431 Ph: 800-564-6077 EMAIL: SALES@ACTIVACFP.COM WWW.ACTIVACFP.COM
 MANUFACTURING: BLOOMINGTON, MN & CORMORANT, CA *WAREHOUSES: SEE WEBSITE FOR LOCATIONS *©16/2022

SUBMITTAL: FD, FDS SERIES - FIRE RATED FLUSH ACCESS DOORS FOR 2 HR WALLS

QTY	MODEL	SIZE	IS DOOR	APPROXIMATE SHIPPING WEIGHT	LATCH (ES)	
	INCHES	mm	W X H	lb		
1	12" x 12"	305 x 305	14" x 14"	12.38"	8	1
1	12" x 14"	305 x 356	16" x 14"	14.38"	12	2
1	12" x 18"	305 x 457	18" x 18"	18.38"	17	3
1	12" x 24"	305 x 608	24" x 24"	24.38"	24	4
1	12" x 30"	305 x 760	27" x 27"	28.38"	28	5
1	12" x 36"	305 x 912	30" x 30"	32.38"	32	6
1	12" x 42"	305 x 1064	33" x 33"	36.38"	36	7
1	12" x 48"	305 x 1216	36" x 36"	40.38"	40	8

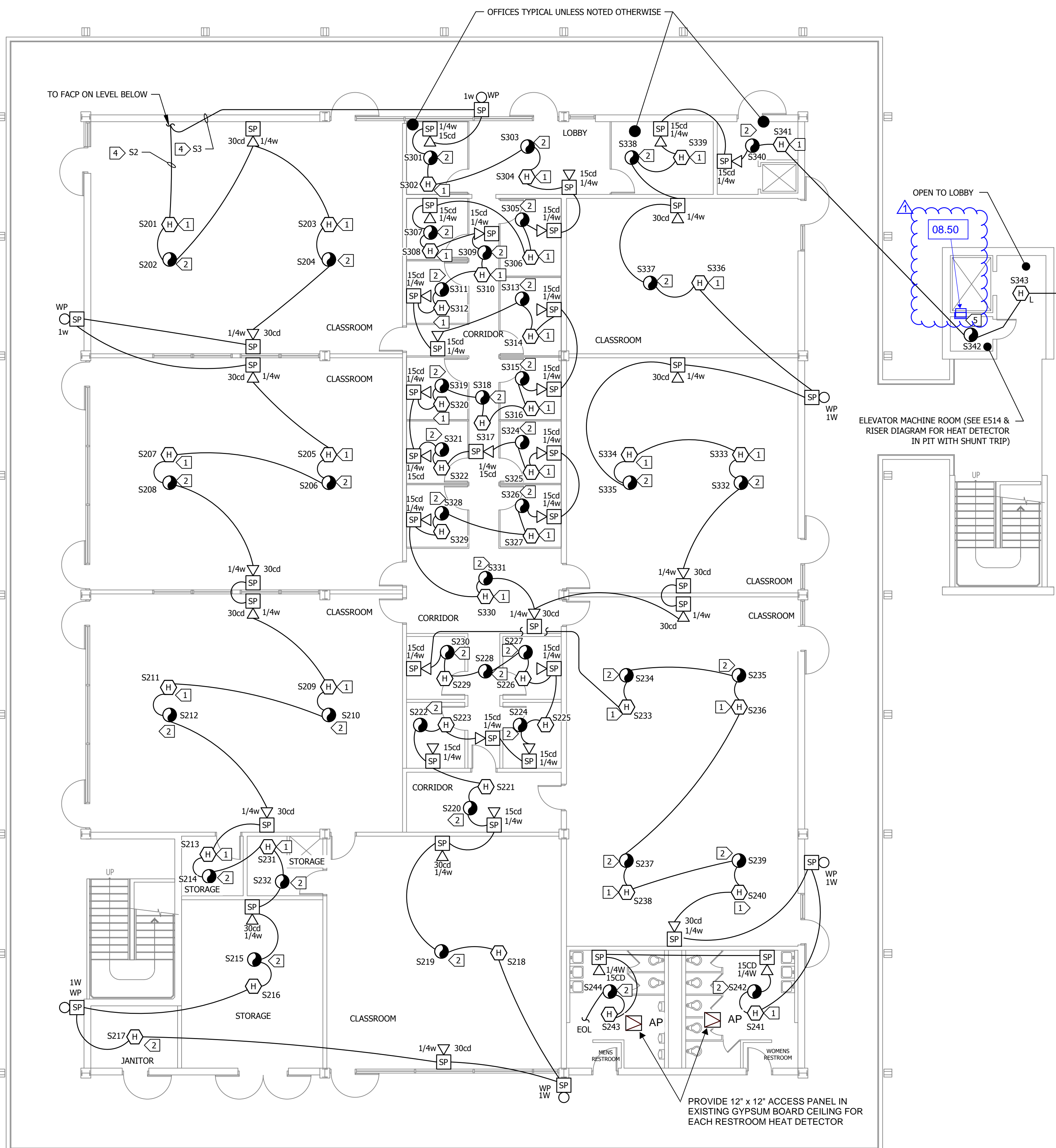
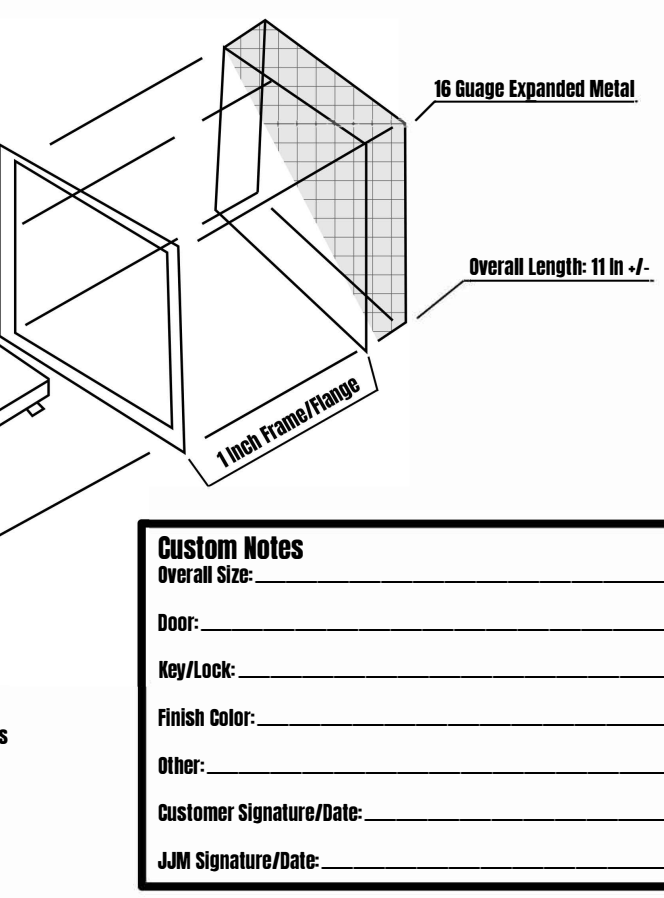


Order Format:
 Example: FD-1212W-48 Model Width Height Lock (U Standard, U3 & U4 Optional) U3 & U4 Optional) Optional Color Gauge

Chart Above Available from One or More of our Warehouses - Check Stock List

W (White)	B (Bronze)	R (Red)	BK (Black)	S (Sand)	AB (AMS Beige)	SB (Fat Beige)	G (Gray)	SS (Silver)
-----------	------------	---------	------------	----------	----------------	----------------	----------	-------------

JJM Construction
 Fire Rated Access Enclosures
 3041 Antelope Rd. Suite 1212 Modesto, CA 95204
 Lic No 875043 | Patent No 662934
 (P) 808-518-3004 | (F) 501-672-0756
 christina@jjmconstruction.net
 www.jjmconstruction.net



SHEET NOTES:

- VERIFY LOCATION OF ALL DEVICES ON ARCHITECTURAL PLANS.
- 3/4" CONDUIT MINIMUM UNLESS OTHERWISE NOTED.
- CONTRACTOR SHALL FURNISH AND INSTALL PULL BOXES AS REQUIRED BY INSTALLED COMMUNICATION CABLE PER CABLE MANUFACTURERS RECOMMENDATIONS.
- MAXIMUM 180 DEGREE OF BEND BETWEEN PULL POINTS.
- RUN COMMUNICATION CABLE IN CABLE TRAY TO MAXIMUM EXTENT POSSIBLE. WHERE CABLE TRAY IS NOT IN CABLE TRAY, CABLE SHALL BE IN CONDUIT.
- UNIQUELY LABEL BOTH ENDS OF ALL CABLEING.

SHEET NOTES:

- INSTALL IN CEILING CAVITY AT TOP OF CEILING.
- INSTALL ON SURFACE OF BOTTOM OF DROP/STRUCTURAL CEILING.
- EXISTING DUCT DETECTORS & AOM (MODULE) FOR HVAC SHUTDOWN, CONNECT TO NEW SYSTEM & PROGRAM INTO FACP.
- PER E511 RISER DIAGRAM, PROVIDE 1V, 1S, 1A TYPICALLY.
- CONNECT TO ELEVATOR SHUNT TRIP VIA RELAY BASE - REPLACE EXISTING BUT USE EXISTING CIRCUIT BREAKER CIRCUIT.

08.50 12" X 12" FIRE RATED ACCESS PANEL WITH CAGE
 SEE INFO THIS SHEET - CUT (E) WALL AND PATCH AND PAINT AFTER INSTALLATION

EXISTING FIRE ALARM SYSTEM TO REMAIN ACTIVE UNTIL NEW SYSTEM IS OPERATIONAL OTHERWISE A FIRE WATCH SHALL BE REQUIRED DURING ANY FA SYSTEM OUTAGES.



SECOND FLOOR FIRE ALARM PLAN - NEW

SCALE: 1/8"=1'-0"

1
- E515



7075 CAMPUS RD
 MOORPARK, CA 93021
 TEL: (805) 378 - 1400

**MOORPARK COLLEGE
 ART GALLERY AT
 TECHNOLOGY CENTER**

7075 CAMPUS ROAD
 MOORPARK, CA 91320

COMMISSIONED ARCHITECT

AMADÒR

28328 AGOURA RD, 203 | AGOURA HILLS, CA, 91301 | 909-558-5334
 amador.white.architects, inc.

CONSULTANT
LUCCI & ASSOCIATES INC.
 CONSULTING ELECTRICAL ENGINEERS
 3251 CORTE MALPASO, #511
 CAMARILLO, CA 93012-8094
 (805) 389-6520 FAX (805) 389-6519

LUCCI & ASSOCIATES, INC. reserve their commonlaw copyright and other property rights in these plans and drawings are not to be reproduced, changed, or copied in any form or manner whatsoever without first obtaining the expressed written permission and consent of LUCCI & ASSOC. INC. nor are they to be assigned to any third party without obtaining said written permission and consent.

STAMPS/SEALS



ADDENDUM 01 8/15/2024

**SHEET TITLE:
 SECOND FLOOR FIRE
 ALARM PLAN - NEW**

PROJECT NO.: 22-MPC-043-E PROJECT ARCH: Designer
 DRAWN: D.S./L.K. CHECKED: KEN LUCCI

E515

DATE: 04/01/2024 SHEET: OF