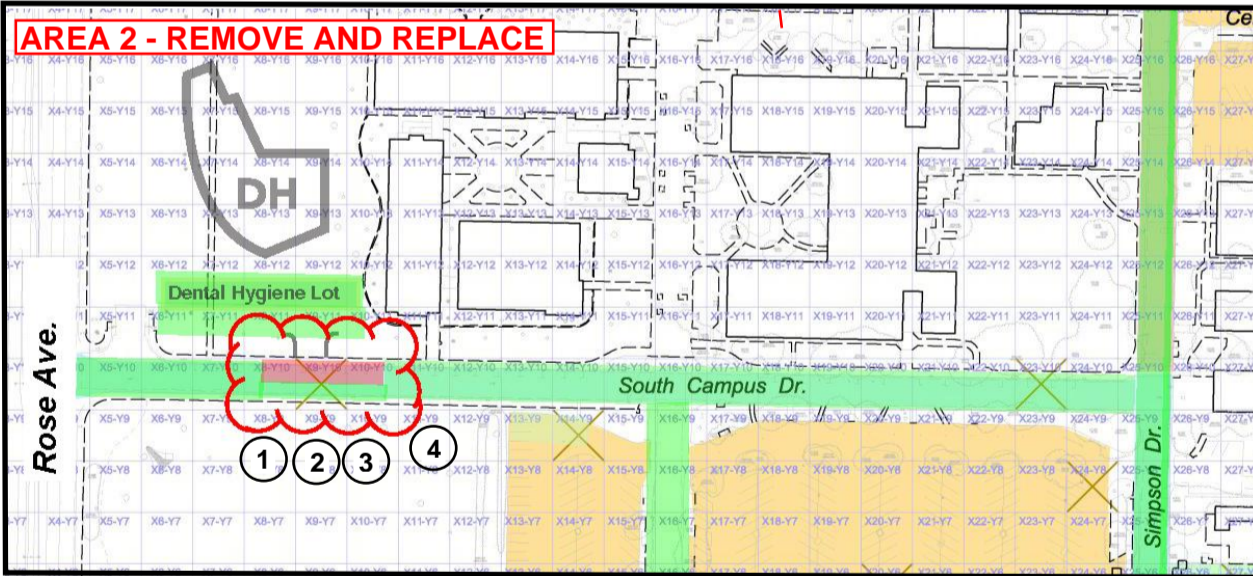
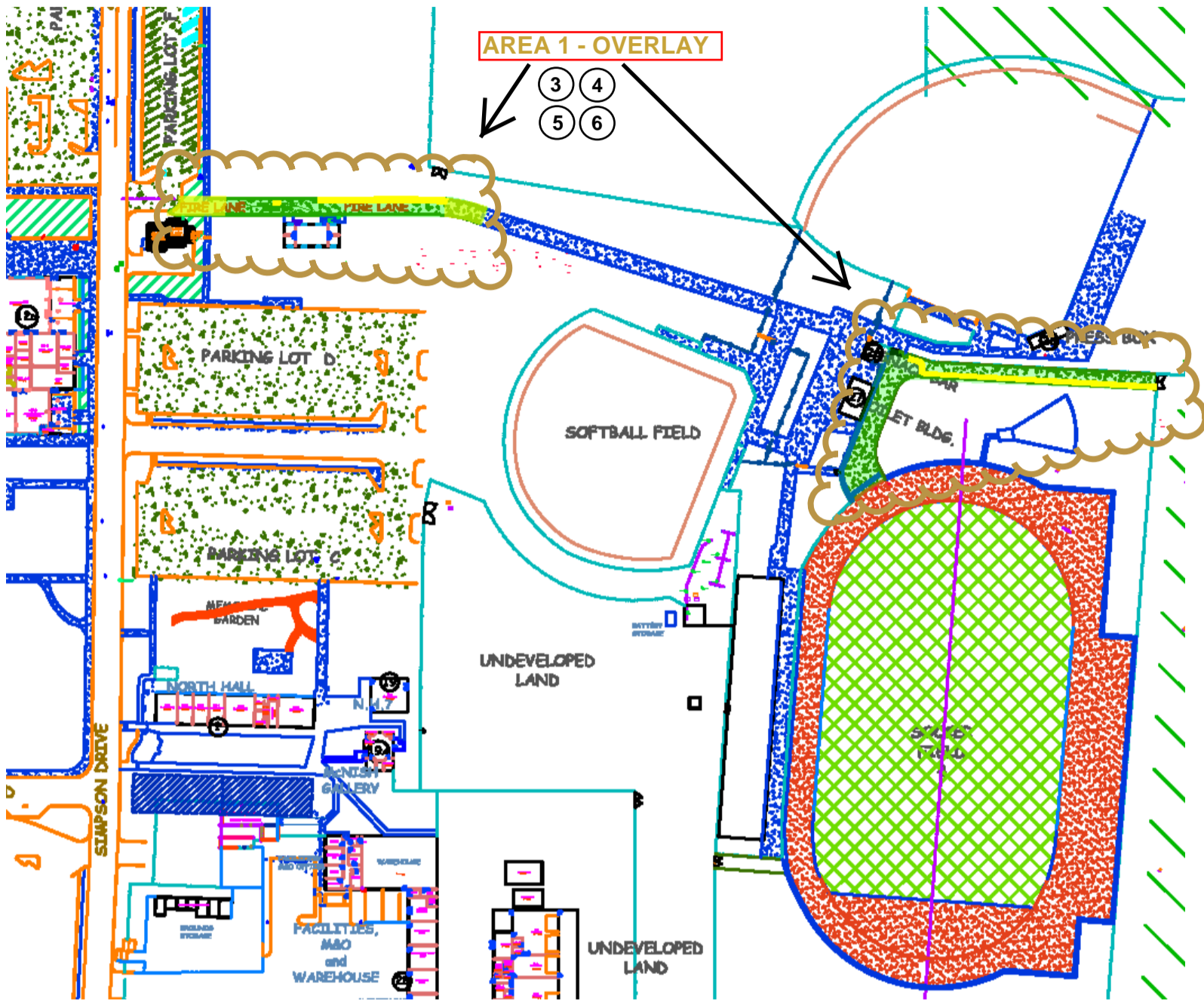


2019 Pavement Repair/Replacement Summary - 2019 Oxnard College Pavement Repair and Replacement

Pavement	Maintenance	AC/Base Thickness (inches)	Notes
Fire Access Road to Athletic Field	Overlay	1½	Grind distressed pavement, overlay, then seal coat 60 days later
Westbound South Campus Way at Dental Hygiene Entrance	Remove and replace	3¾/9	600X under base, replace south and west of new entrance, restore markings



GENERAL NOTES

- A. Contractor to verify pavement areas and locations of existing utilities.
- B. Contractor to cut 18-inch wide key full depth into existing adjacent AC and seal new joints.
- C. Install redwood header along unsupported pavement edges. Replace header where necessary.
- D. Contractor to match finished grades to adjacent existing improvements.
- E. Perform all work in conformance with specifications.
- F. Contractor to effect positive drainage on all new pavement surfaces. Drainage on new pavement surfaces shall be achieved by sheet flow and shall not be concentrated.

CONSTRUCTION NOTES

- ① Memorialize and restore all affected pavement markings with traffic-rated paint.
- ② Place Mirafi 600X, or equivalent, over 1 foot of subgrade compacted to a minimum of 95 percent of the maximum dry density. Install geotextile in accordance with manufacturer's recommendations. Place full loose thickness of aggregate base over geotextile. Do not traffic geotextile with less than 10 inches base (loose thickness) over geotextile. Compact base to a minimum of 95% of the maximum dry density.
- ③ Apply tack coat to all vertical and horizontal AC and concrete surfaces just prior to AC laydown.
- ④ Seal edges of repair area abutting existing pavement.
- ⑤ Construct 1½-inch (final compacted thickness) asphalt concrete overlay over existing pavement in accordance with specifications. Petromat or equivalent shall be used under overlay. Petromat shall be placed fuzzy-side-down and in strict accordance with manufacturer's recommendations. A tack coat consisting of uncut paving grade asphalt cement AR-4000 shall be applied over a clean pavement surface using an application rate of 0.25 gallon/sq. yd. Petromat shall be overlapped 2 to 3 inches and "shingled" in direction of rolling asphalt concrete overlay. Tack coat shall be applied to overlap joints. Maximum aggregate size of asphalt concrete for overlay shall be ½-inch.
- ⑥ Clean prep and seal coat entire asphalt concrete surface after waiting a minimum of 60 days after overlay.