



MOORPARK COLLEGE

7075 CAMPUS RD
MOORPARK, CA 93021
TEL: (805) 378 - 1400

PROJECT TITLE AND SCHOOL LOCATION

ALTERATION TO FOUNTAIN HALL BUILDING

7075 CAMPUS RD.
MOORPARK, CA 93021

COMMISSIONED ARCHITECT

AMADÒR

25328 AGOURA RD, 203 | AGOURA HILLS, CA 91001 | 800-508-4534
amadòr white architects, inc.

CONSULTANT

SCOPE OF WORK:

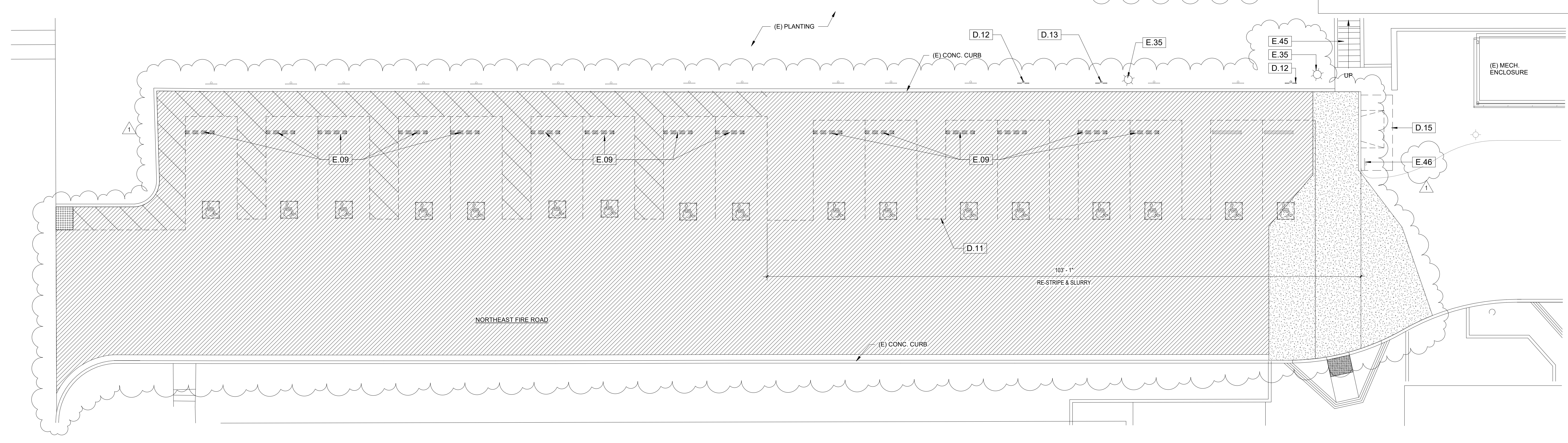
1. PROVIDE SURVEY OF AREA OF WORK.
2. REMOVE AND PROTECT (E) WHEEL STOPS.
3. REMOVE (E) AC PAVING AS NEEDED TO ACHIEVE NEW GRADES.
4. PROVIDE AND RECOMPACT BASE - EXISTING BASE MAY BE REUSED.
5. PROVIDE NEW AC PAVING.
6. PROVIDE SEAL COAT AT NEW PAVING.
7. PROVIDE STRIPING, ISA LOGO AND "NO PARKING" AS INDICATED.

LEGEND

- (E) CONCRETE PAVING AT CROSSWALK
- DEMOLISH (E) ASPHALT CONCRETE PAVING

KEYNOTES

- 10.01 VAN ACCESSIBLE NO PARKING SIGN
- 10.14 ACCESSIBLE PARKING SIGN
- 32.02 12" HIGH PAINTED TEXT, COLOR: WHITE
- 32.03 ADA COMPLIANT PAINTED SYMBOL OF ACCESSIBILITY
- 32.05 (N) ASPHALT CONCRETE PAVING OVER (E) BASE
- D.11 REMOVE (E) STRIPING
- D.12 DEMOLISH (E) SIGN AND POST
- D.13 DEMOLISH (E) SIGN AND REPLACE W/ VAN ACCESSIBLE SIGN
- D.15 DEMOLISH (E) CONC. RAMP
- E.09 RELOCATE (E) CONC. WHEEL STOP
- E.12 (E) ACCESSIBLE PARKING SIGNAGE
- E.35 (E) LIGHT STANDARD
- E.36 (E) CONCRETE WHEEL STOP
- E.45 (E) CONC. STEPS
- E.46 (E) SIGN TO REMAIN
- E.47 (E) CONCRETE PAVING AT CROSSWALK

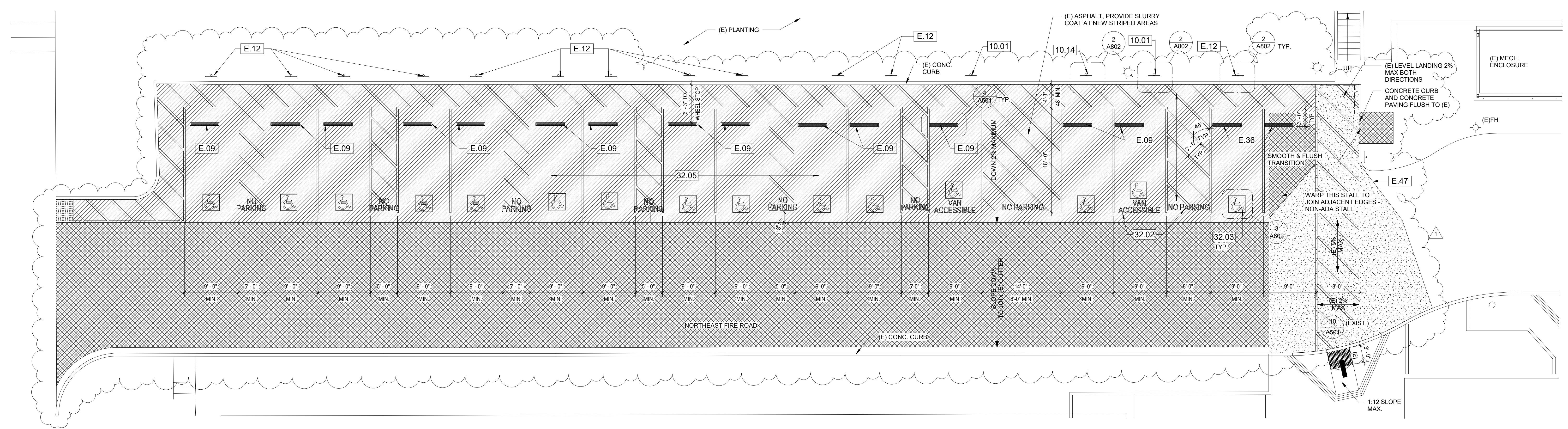


ENLARGED PARKING LOT DEMOLITION PLAN 1/8" = 1'-0" 1

LEGEND

- (E) CONCRETE PAVING AT CROSSWALK
- (N) ASPHALT CONCRETE PAVING SLOPE 2% MAXIMUM EVERY DIRECTION
- (N) ASPHALT CONCRETE PAVING SLOPE 5% MAXIMUM EVERY DIRECTION

- NOTES:**
1. ALL DIMENSIONS TO PAINTED STRIPING ARE TAKEN FROM THE CENTERLINE OF STRIPE UNLESS NOTED OTHERWISE
 2. STRIPING TO BE 4" WIDE PAINTED BLUE
 3. BORDER STRIPING SHALL BE 4" WIDE PAINTED BLUE
 4. PROVIDE SLURRY COAT AT NEW STRIPED AREAS
 5. FOR PARKING TABULATION, SEE A103
 6. FOR ADDITIONAL ACCESSIBLE STALL INFORMATION, SEE 7IG002



ENLARGED SITE PLAN-PARKING LOT 1/8" = 1'-0" 2

STAMPS/SEALS



Project Status

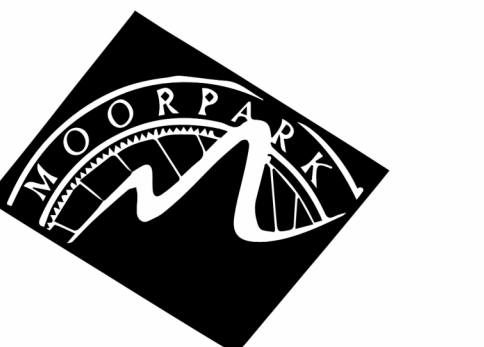
1 02-27-25 ADDENDUM 01
SHEET TITLE:

ENLARGED SITE PLAN-PARKING LOT

PROJECT NO: 22-MPC-042 PROJECT ARCH: Designer
DRAWN: Author CHECKED: Checker
SHEET NUMBER:

A104

DATE: 8/22/24 SHEET: OF



MOORPARK COLLEGE

7075 CAMPUS RD
MOORPARK, CA 93021
TEL: (805) 378-1400

PROJECT TITLE AND SCHOOL LOCATION

ALTERATION TO FOUNTAIN HALL BUILDING

7075 CAMPUS RD.
MOORPARK, CA 93021

COMMISSIONED ARCHITECT

AMADÒR

28328 AGOURA RD. 203 | AGOURA HILLS, CA 91001 | 909-508-4334

CONSULTANT

STAMPS/SEALS



Project Status

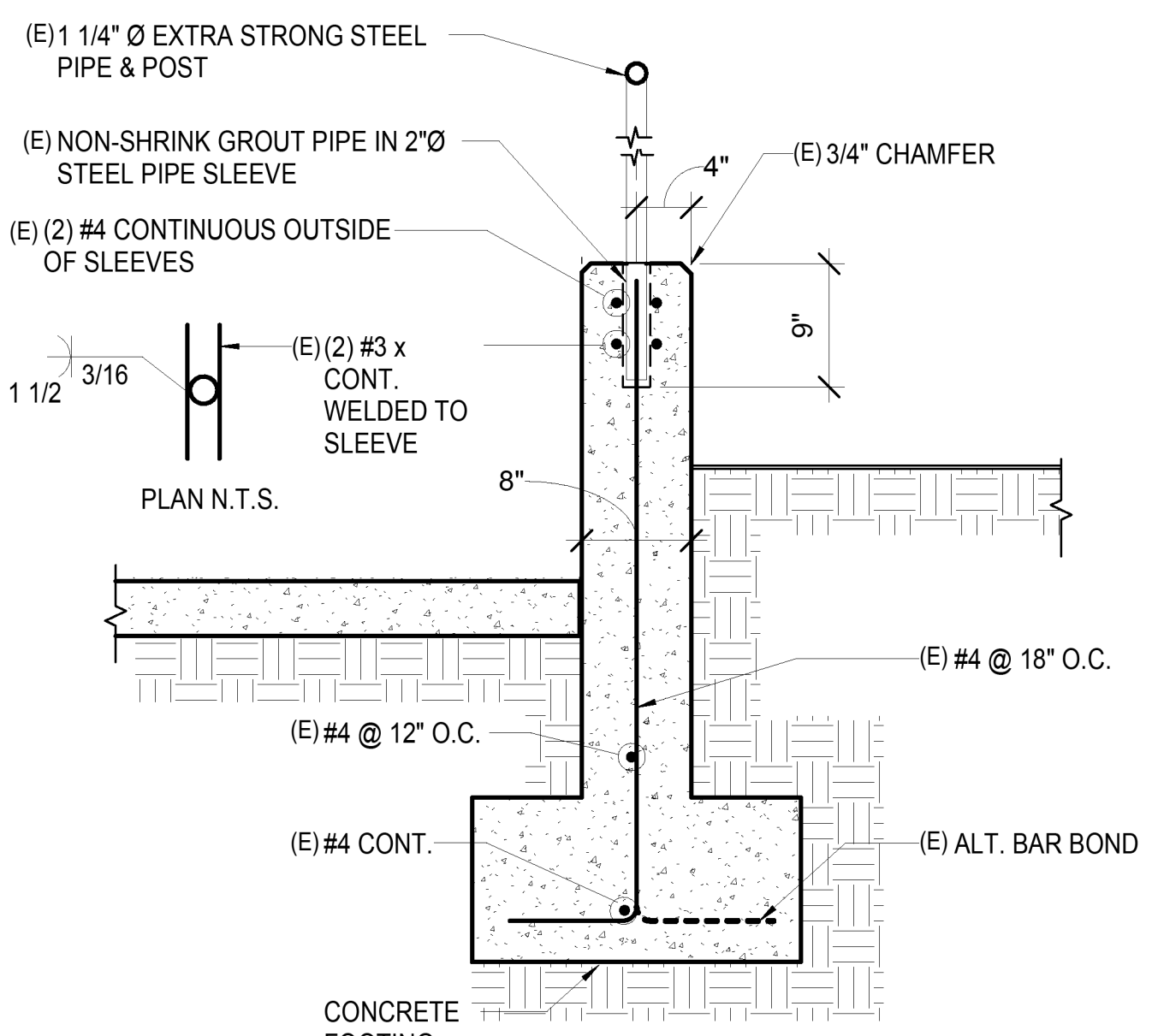
1 02-27-25 ADDENDUM 01
SHEET TITLE:

EXISTING RAMP PLAN & SECTIONS

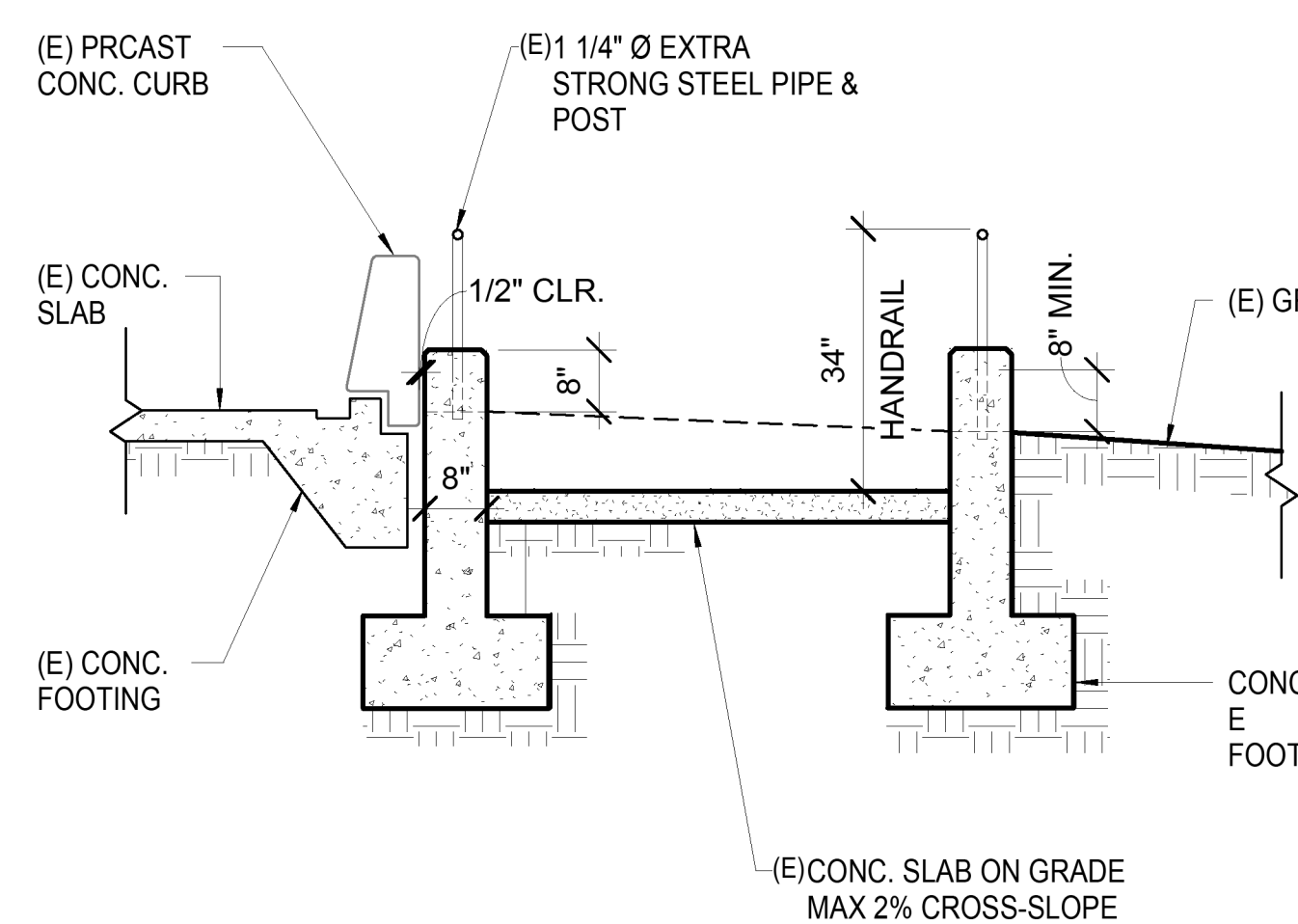
PROJECT NO: 22-MPC-042 PROJECT ARCH: Designer
DRAWN: Author CHECKED: Checker
SHEET NUMBER:

A104A

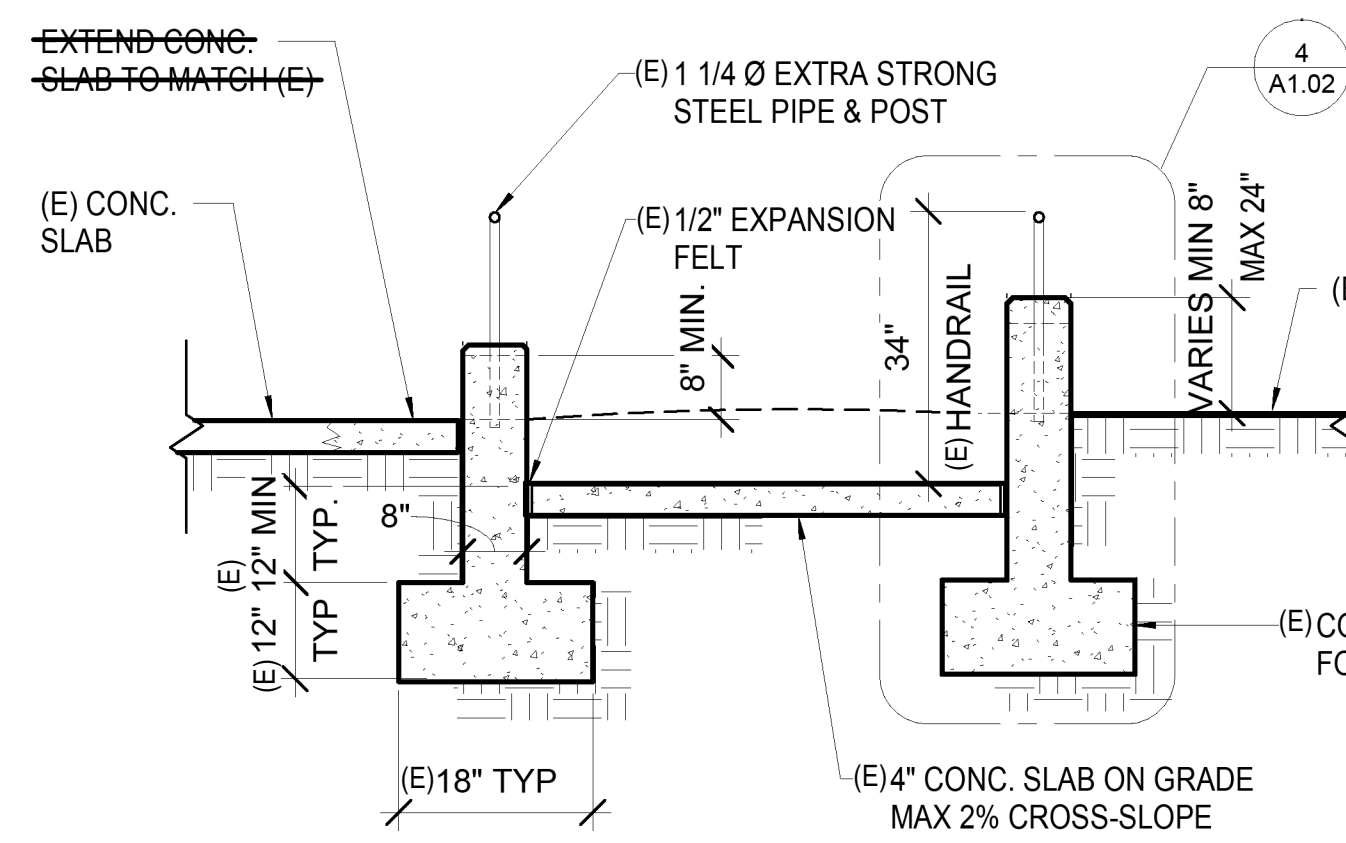
DATE: 8/22/24 SHEET: OF



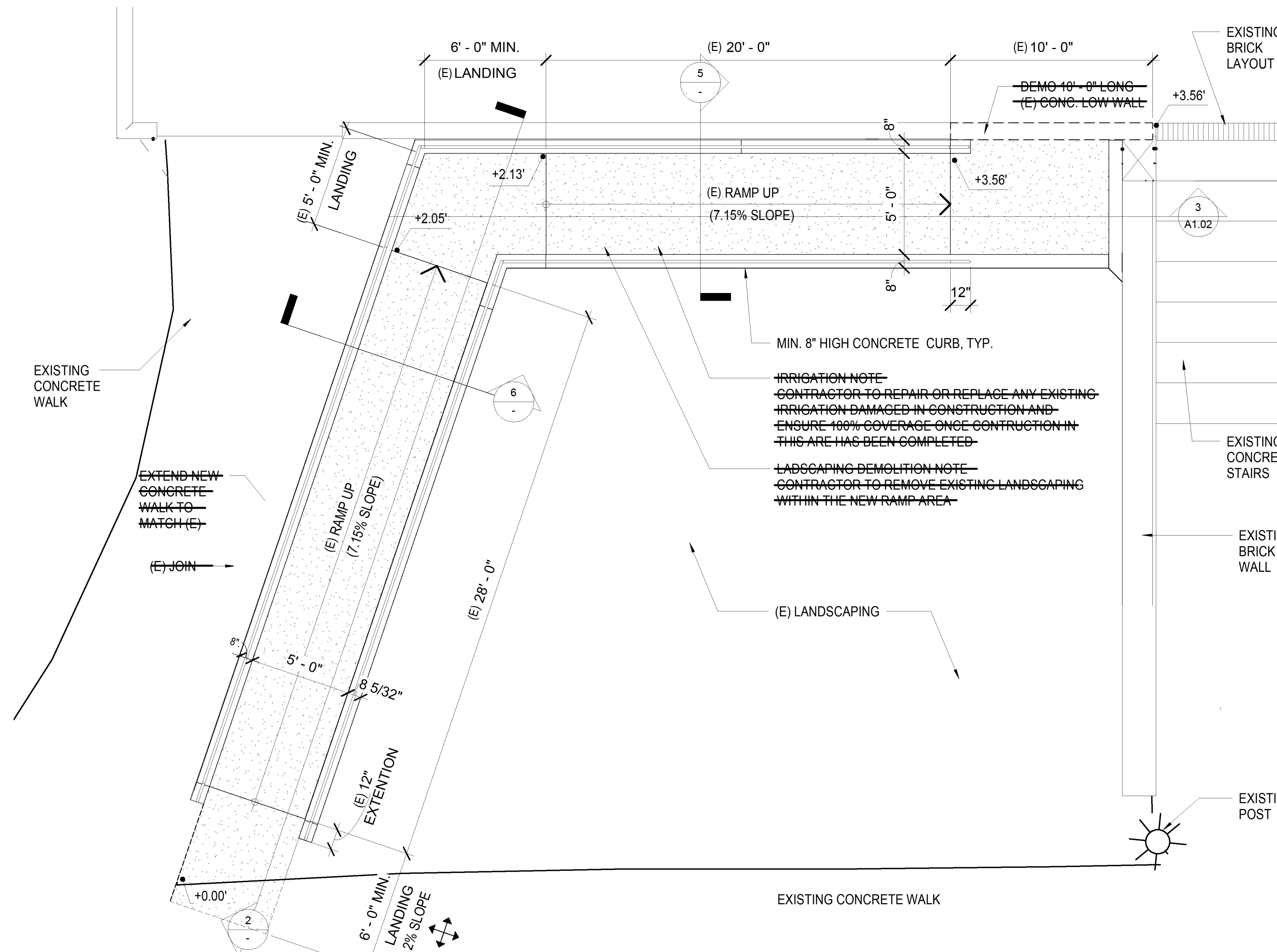
4 EXISTING PIPE SLEEVE DETAIL
1" = 1'-0"



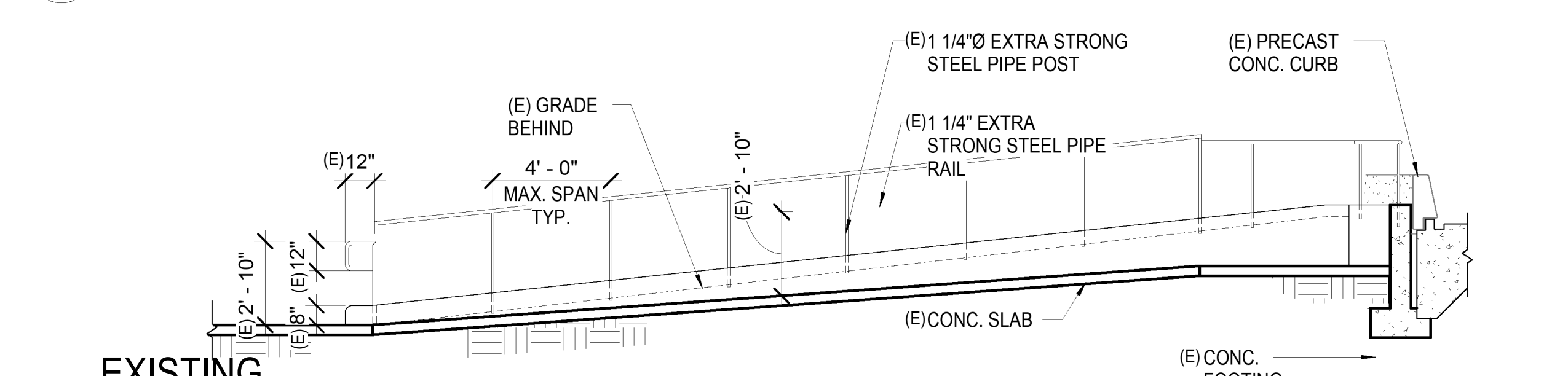
5 EXISTING RAMP CROSS SECTION
1/2" = 1'-0"



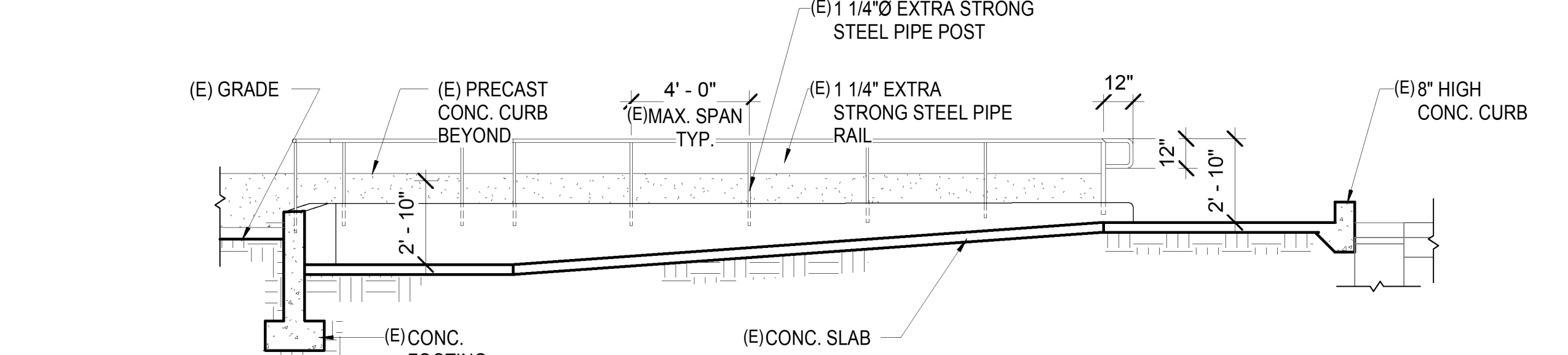
6 EXISTING RAMP CROSS SECTION
1/2" = 1'-0"



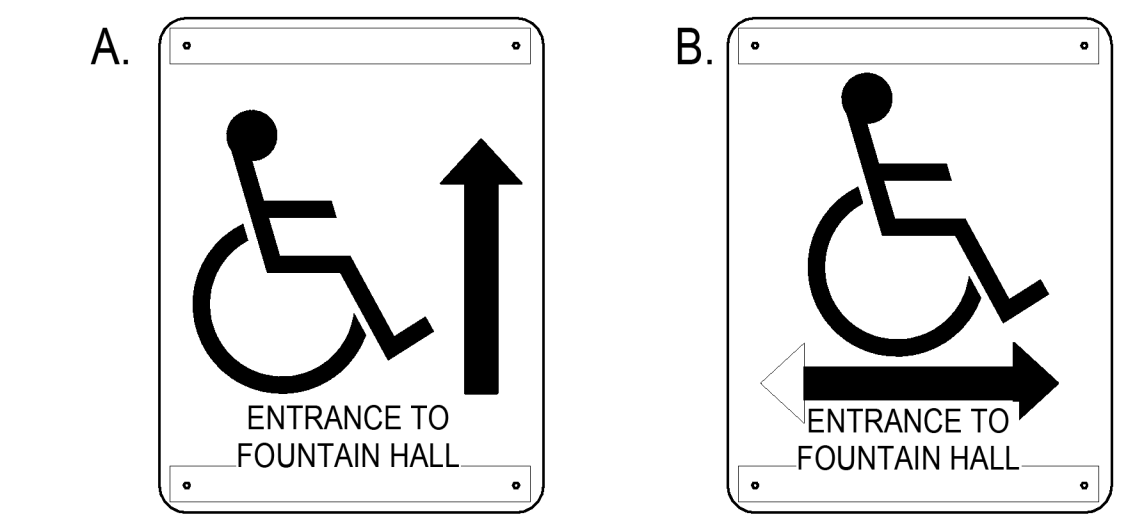
1 EXISTING ENLARGED RAMP PLAN
1/4" = 1'-0"



2 EXISTING RAMP SECTION
1/4" = 1'-0"

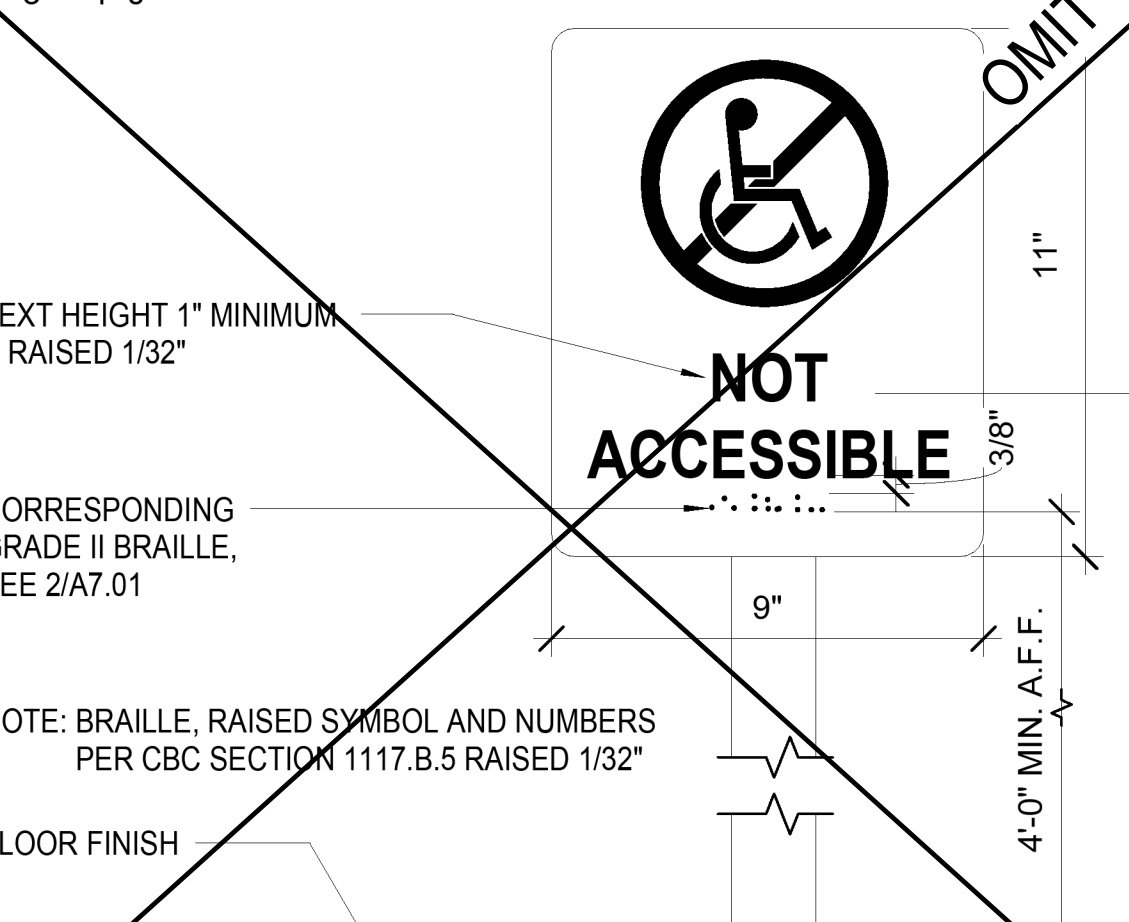


3 EXISTING RAMP SECTION
1/4" = 1'-0"



PROVIDE THE APPROPRIATE DIRECTIONAL ARROW TO SUIT SITUATION.
SIGN SHALL BE 72 SQ. IN. MIN. NON-GLARE ON STEEL SIGN BEADED TEXT OR EQUAL WITH INTERNATIONAL SYMBOL OF ACCESSIBILITY IN WHITE OR BLUE BACKGROUND.
PROVIDE 1/2" DIA. HOLES AT EACH CORNER FOR MOUNTING SIGN TO CHAIN-LINK FENCE W/ FENCE CLIPS & SCREWS. WALL MOUNTING USING GALV. WASHERS, EXPANSION SHIELDS & VANDAL-PROOF SCREWS.

7 DIRECTIONAL SIGNAGE
3" = 1'-0"



8 NON-ACCESSIBLE SIGN
3" = 1'-0"

