

EXISTING ACCESSIBLE PARKING - A# 03-112836 - DEMOLITION PLAN

1
1/8" = 1'-0"

SCOPE OF WORK:

PROVIDE SURVEY OF AREA OF WORK.
 REMOVE AND PROTECT (E) WHEEL STOPS.
 REMOVE (E) AC PAVING AS NEEDED TO ACHIEVE NEW GRADES.
 PROVIDE AND RECOMPACT BASE - EXISTING BASE MAY BE REUSED.
 PROVIDED NEW AC PAVING.
 PROVIDE SEAL COAT AT NEW PAVING.
 PROVIDE STRIPING, ISA LOGOS AND "NO PARKING" AS INDICATED.

NOTE: PARKING LOT AND STALL SIGNAGE IS NOT IN SCOPE.

KEYNOTES

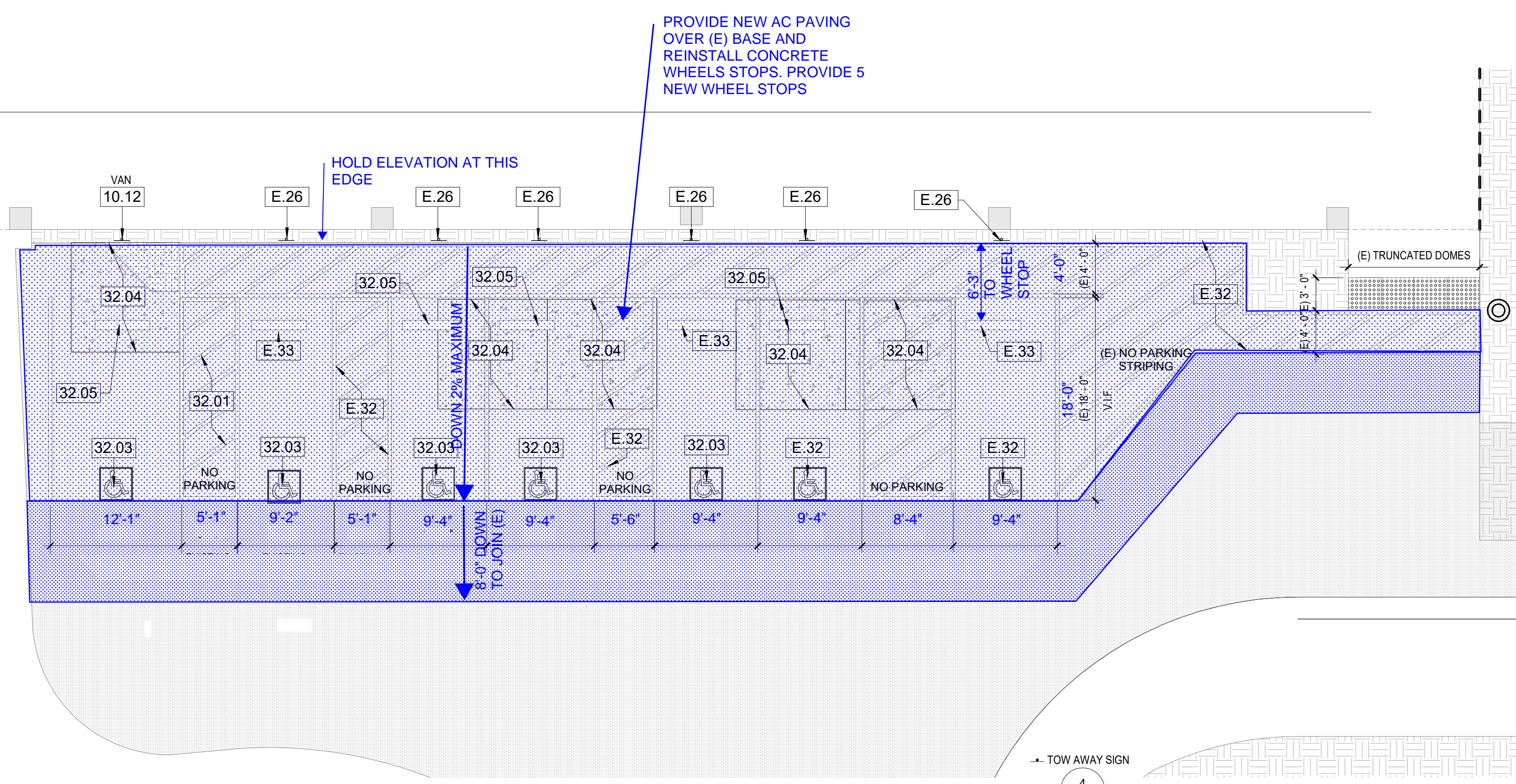
- 10.12 REPLACE SIGNAGE, VAN ACCESSIBLE PARKING SIGN, SEE 10/A504
- 32.01 ADA COMPLIANT ACCESSIBLE STALL WITH 4" WIDE BLUE STRIPES, SEE 1/G003
- 32.03 ADA COMPLIANT PAINTED SYMBOL OF ACCESSIBILITY, SEE 01/G003.
- 32.04 AC PAVING, SEALCOAT, AND STRIPING.
- 32.05 RELOCATE WHEELSTOP, SEE 1/G003
- D.05 GRIND 10' x 10' AREA OF (E) PARKING PAVMENT LESS THAN 2% ANY DIRECTION
- D.06 REMOVE (E) WHEEL STOP FOR GRINDING
- D.44 REMOVE (E) PARKING STRIPING
- D.45 REMOVE AND REPLACE (E) PARKING SIGN
- D.48 REMOVE (E) I.S.A. PARKING STALL PAINTED SYMBOL 36" X 36" BY SAND BLASTING
- D.49 RE-STRIPE (E) PARKING STRIPING, TO BE EXTENDED.
- E.26 (E) ACCESSIBLE PARKING SIGN TO REMAIN
- E.32 (E) 4" WIDE STRIPING WITH NO PARKING 12" LETTERING
- E.33 (E) WHEEL STOP

NOTES:

1. EXECUTE ALL DEMOLITION REQUIRED FOR COMPLETION OF THE WORK.
2. KEEP SITE AND ADJACENT AREAS CLEAN AND UNOBSTRUCTED. COORDINATE WITH THE VCCCD PROJECT MANAGER.
3. REMOVE OR RELOCATE EXISTING POWER, DATA, IRRIGATION, PLUMBING AND OTHER UTILITIES AS REQUIRED TO ACCOMMODATE THE NEW IMPROVEMENTS.

PARKING SUMMARY

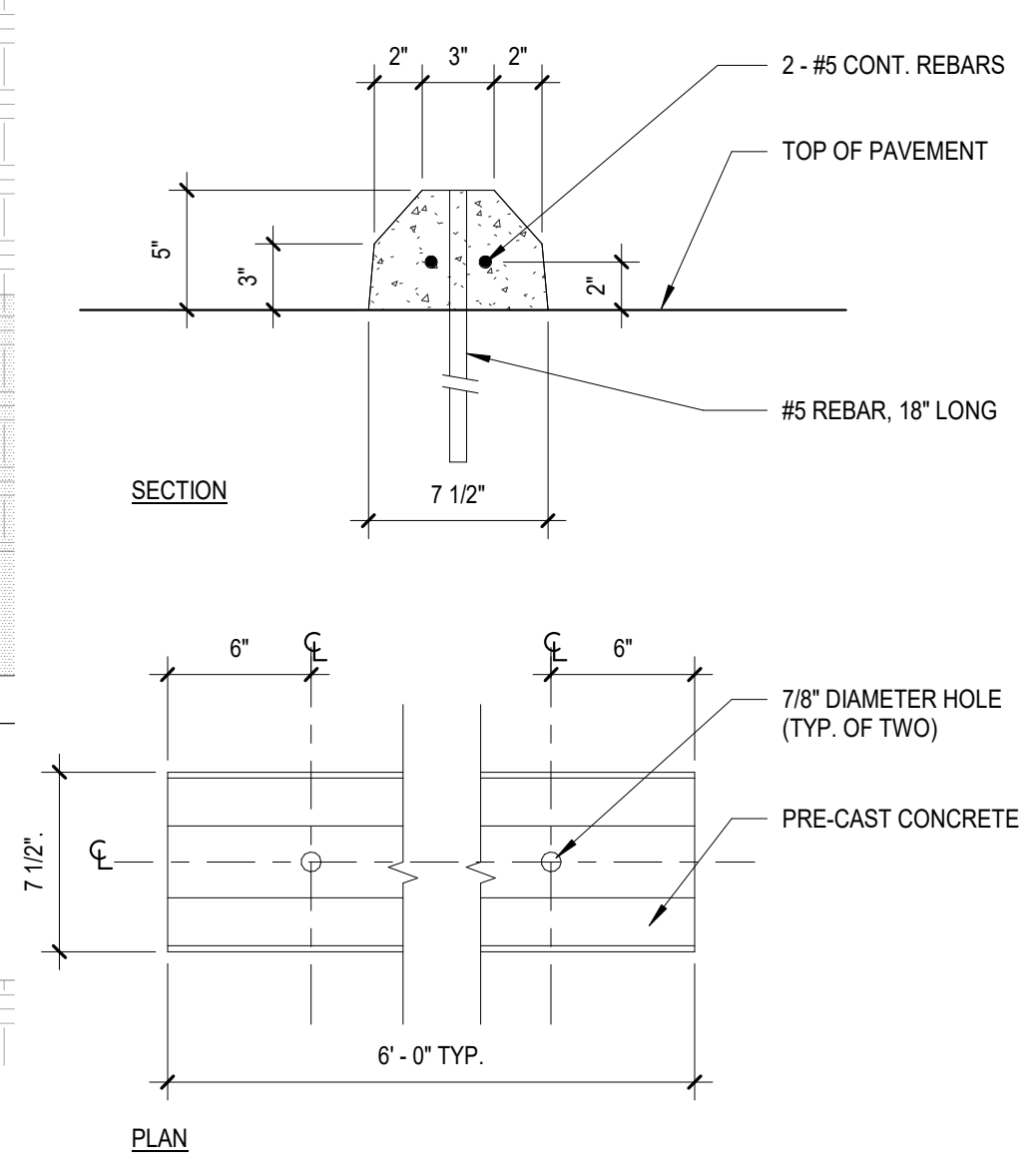
ACCESSIBLE STALLS = 5
 VAN ACCESSIBLE STALLS = 1
 TOTAL PARKING = 6 STALLS



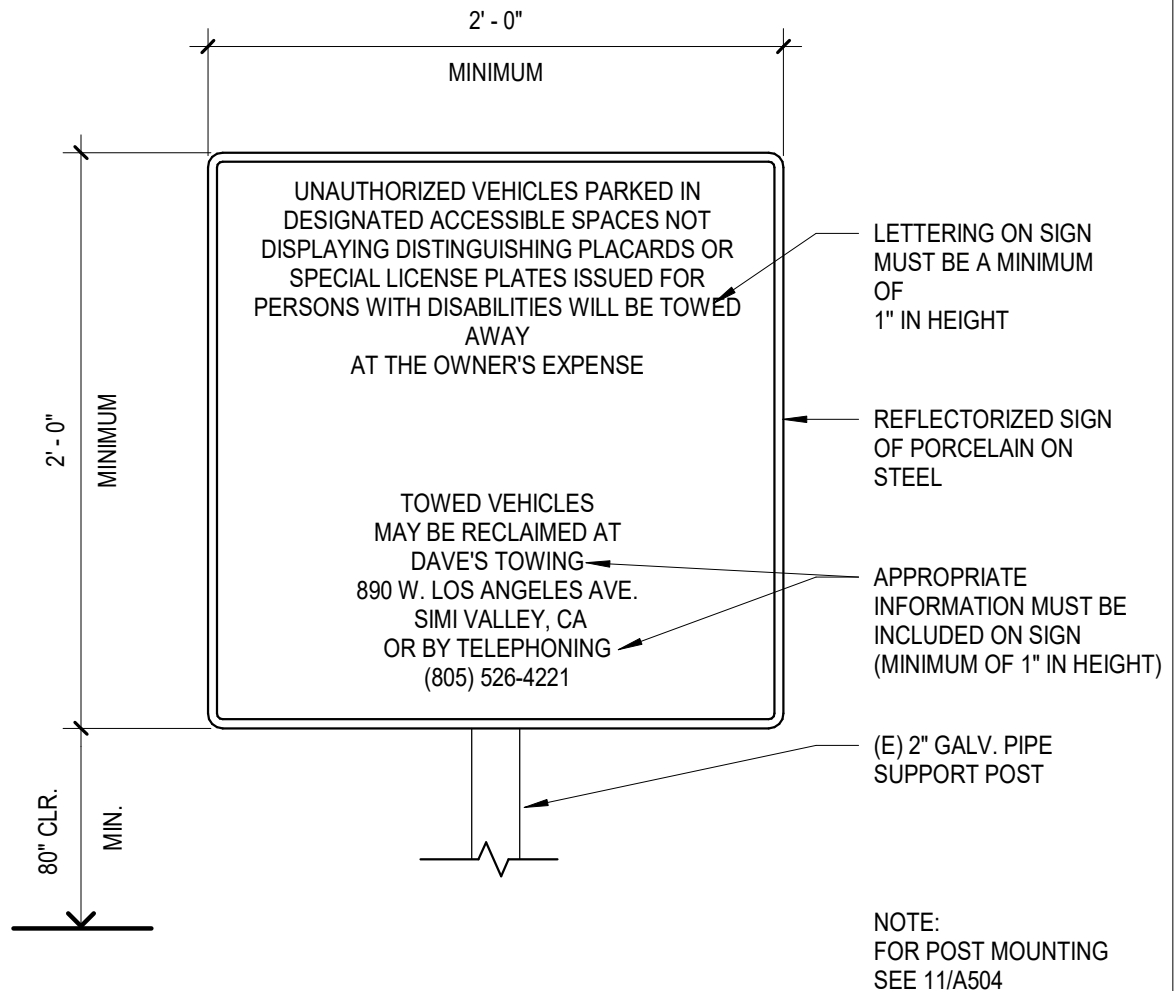
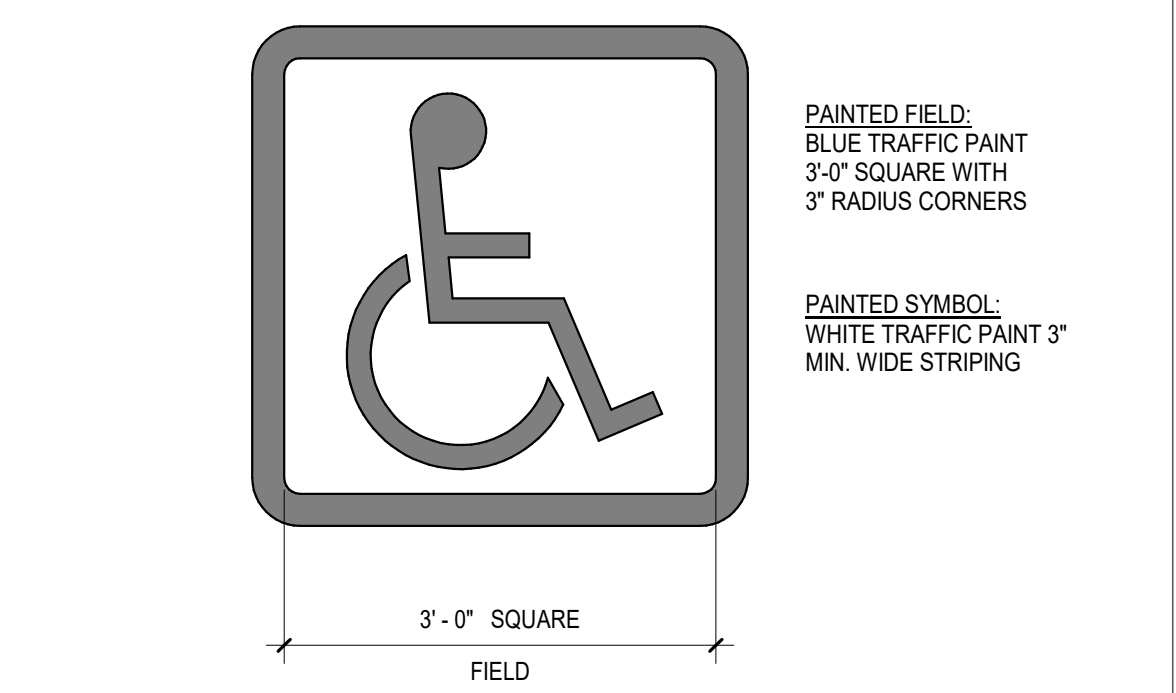
EXISTING ACCESSIBLE PARKING - A# 03-112836 - NEW CONSTRUCTION

2
1/8" = 1'-0"

5 CONCRETE WHEEL STOP
1 1/2" = 1'-0"



3 I.S.A. PARKING STALL SYMBOL
3/4" = 1'-0"



4 VEHICLE TOW AWAY SIGN
1 1/2" = 1'-0"

DIVISION OF THE STATE ARCHITECT



MOORPARK COLLEGE

7075 CAMPUS RD
 MOORPARK, CA 93021
 TEL: (805) 378 - 1400

PROJECT TITLE AND SCHOOL LOCATION

MPC ART GALLERY

7075 CAMPUS RD
 MOORPARK, CA 93021


COMMISSIONED ARCHITECT

AMADOR

amador@whitearchitects.com
 28328 AGOURA RD, 203 | AGOURA HILLS CA, 91301 | 955-558-4334

CONSULTANT

STAMPS/SEALS



1/30/24 DSA V1

SHEET TITLE:

ACCESSIBLE PARKING PLANS

PROJECT NO: 22-MPC-043 PROJECT ARCH: Designer
 DRAWN: Author CHECKED: Checker
 SHEET NUMBER:

A104

DATE: 1/30/24 SHEET: ___ OF ___