

KINESIOLOGY OUTDOOR CLASSROOM PHASE 2

MOORPARK COLLEGE
 7075 CAMPUS ROAD
 MOORPARK, CA 93021
 CONSTRUCTION DOCUMENTS

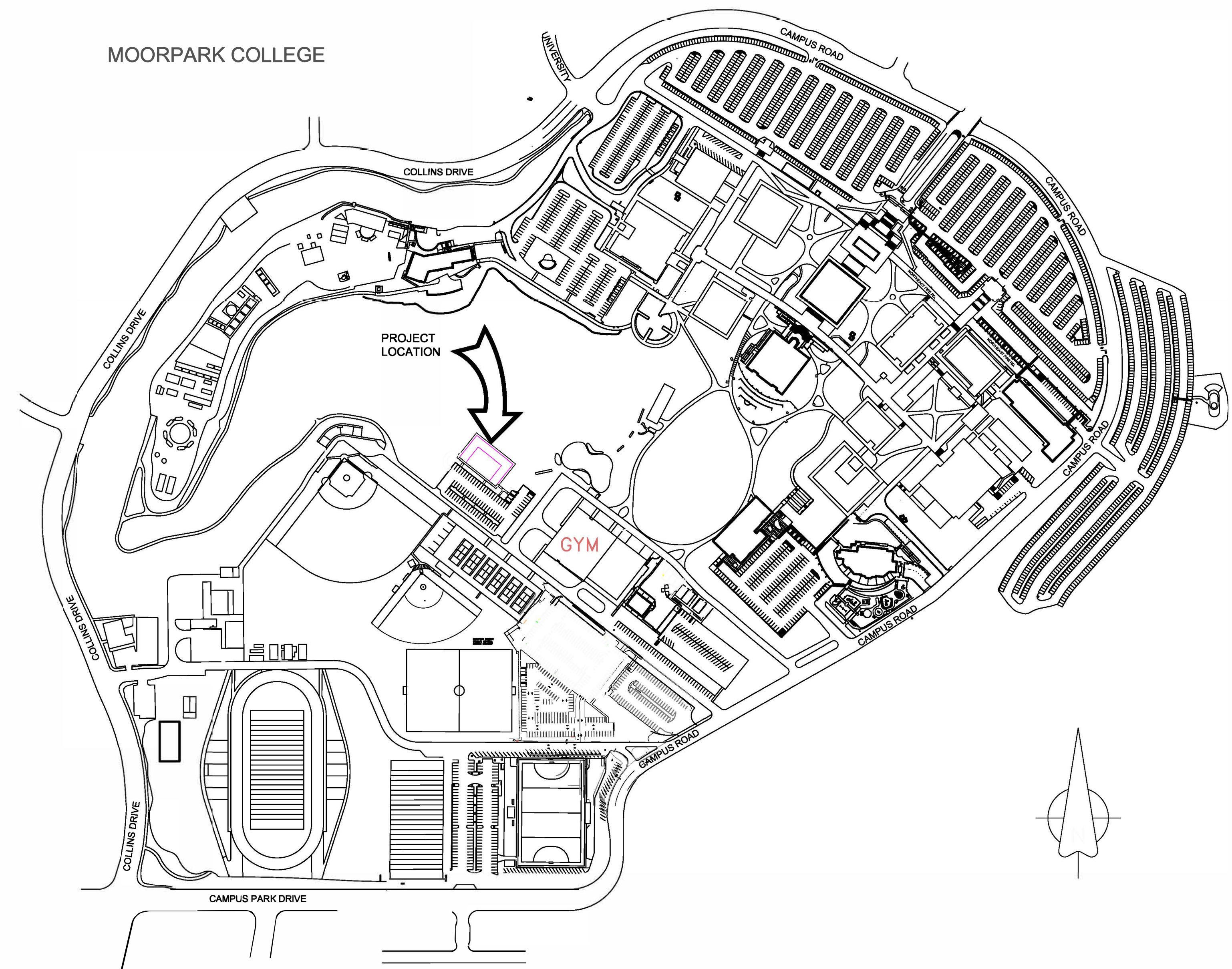
MAY 15, 2019

SHEET INDEX		
No.	NAME	DESCRIPTION
1	G-0.00	COVER SHEET
2	G-1.00	SITE PLAN
3	G-2.00	DIMENSION PLAN

Google Maps



VICINITY MAP



MOORPARK COLLEGE

7075 CAMPUS ROAD
 MOORPARK, CA 93021
 TEL: 805.378.1454
 FAX: 805.378.1593

FACILITIES,
 MAINTENANCE
 and OPERATIONS

John Sinutko
 Director

7075 CAMPUS ROAD
 MOORPARK, CA 93021
 TEL: 805.378.1454
 FAX: 805.378.1593



KINESIOLOGY OUTDOOR CLASSROOM PHASE 2

REVISIONS:

PLAN NUMBER:

BID No. 588

DRAWING TITLE:

COVER SHEET

SCALE:

N/A
 24x36D

PLOT DATE:

5.13.2019

SHEET NO.:

G-0.00

MOORPARK COLLEGE

7075 CAMPUS ROAD
MOORPARK, CA 93021
TEL: 805.378.1454
FAX: 805.378.1593

FACILITIES,
MAINTENANCE
and OPERATIONS

John Sinutko
Director

7075 CAMPUS ROAD
MOORPARK, CA 93021
TEL: 805.378.1454
FAX: 805.378.1593



KINESIOLOGY OUTDOOR CLASSROOM PHASE 2

REVISIONS:

PLAN NUMBER:

BID No. 588

DRAWING TITLE:

SURFACING PLAN

SCALE:

N/A
24x36D

PLOT DATE:

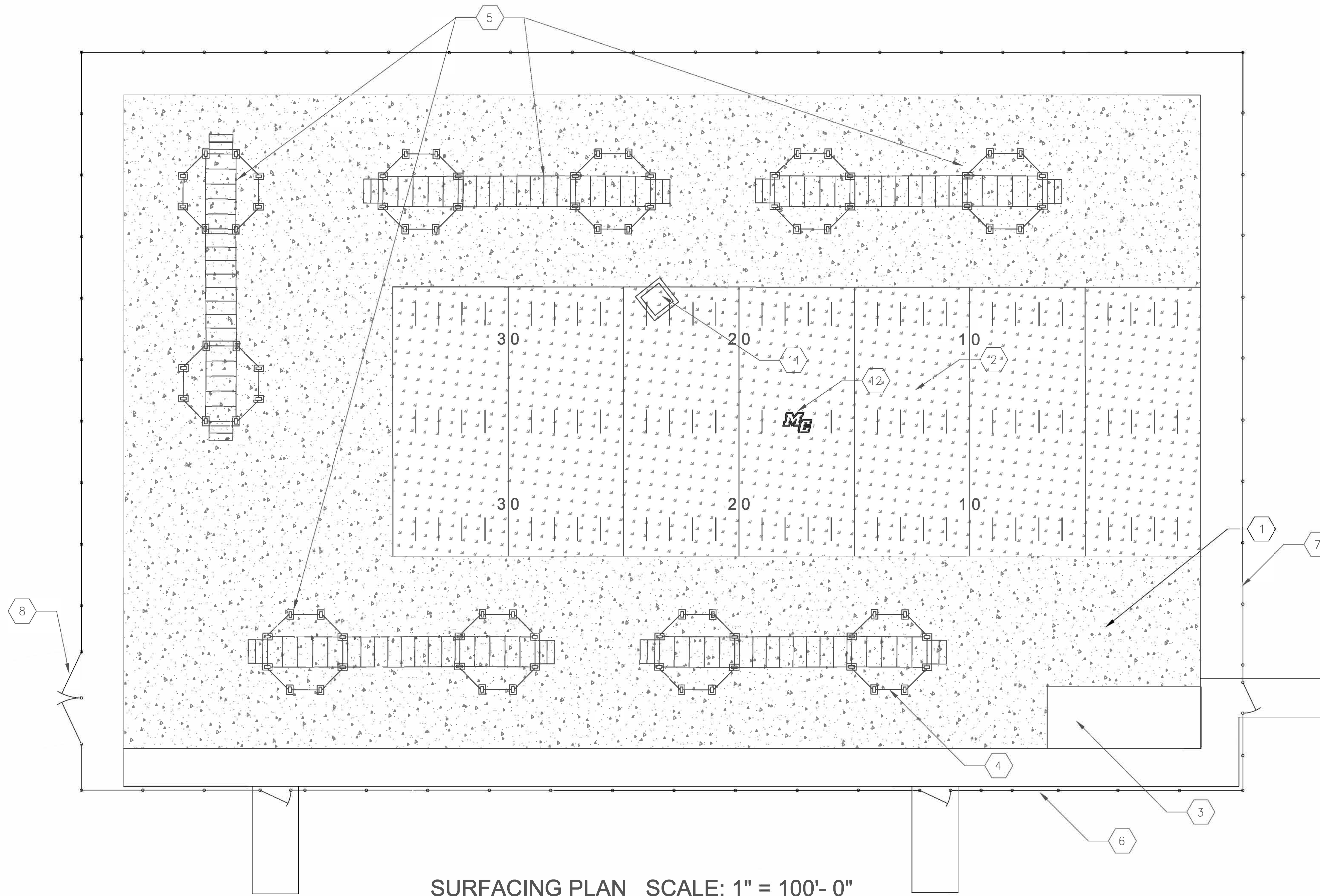
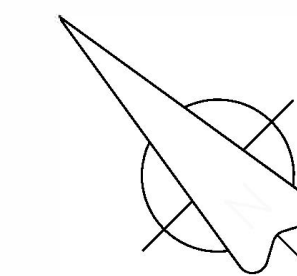
5.13.2019

SHEET NO.:

G-1.00

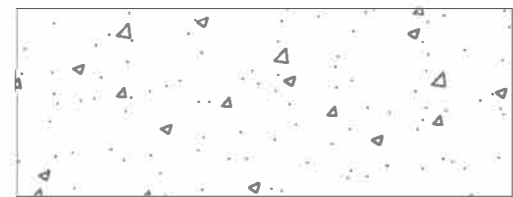
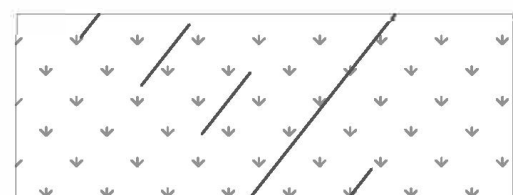
SURFACING NOTES:

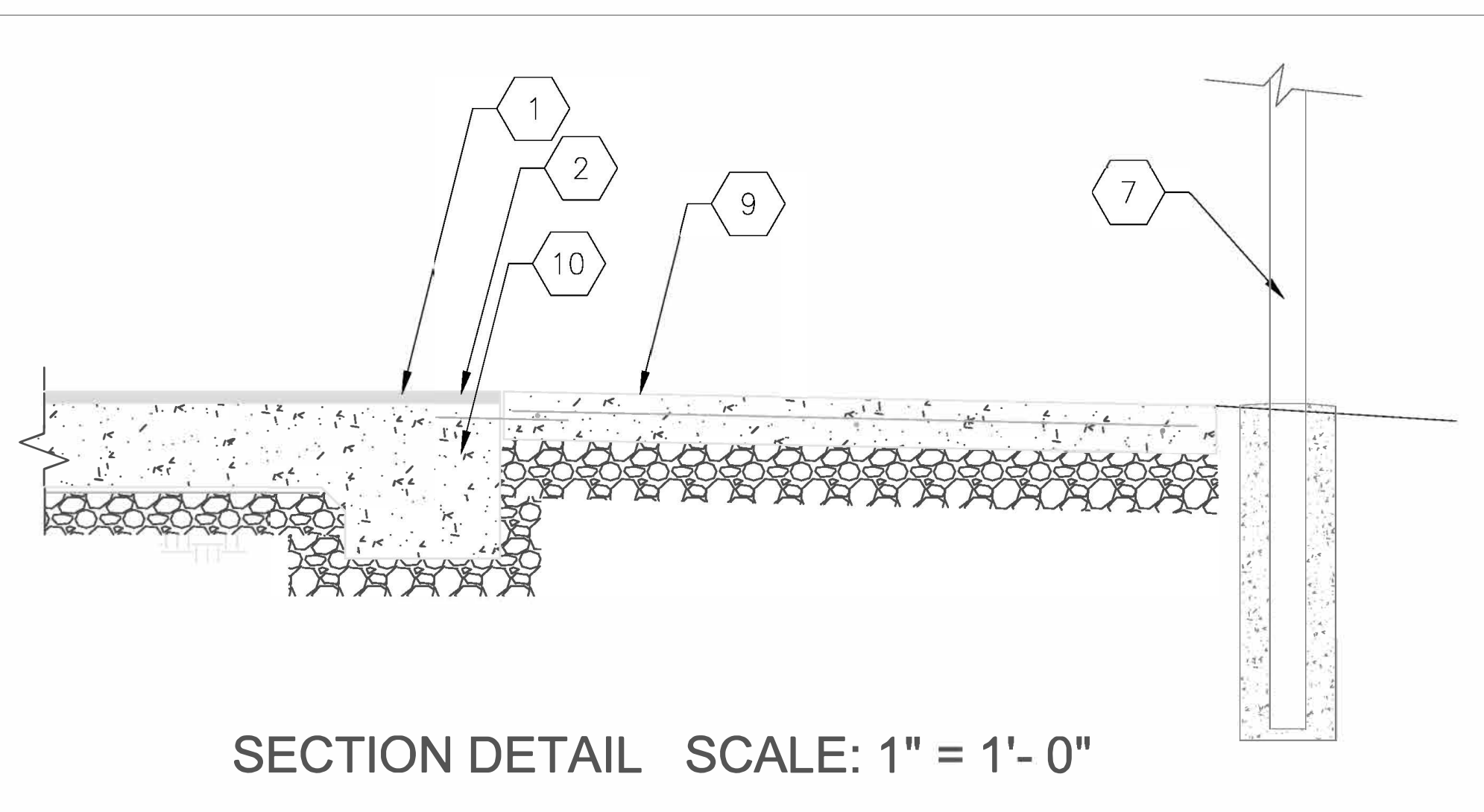
1. Provide and install Resilient Athletic Flooring Tiles made from recycled rubber on existing concrete slab. Ecore Everlast Ultra Tile was used as basis of design. See Specification Section 09 65 66 for specific information, product requirements, installation requirements, and warranty requirements.
2. Provide and install Synthetic Recreational Sport Turf on existing concrete slab. Surface shall include a two fiber system specifically designed to resist abrasion, including a polyethylene monofilament and a polypropylene thatch, not less than 1 1/4" in height. Base mat shall be made of a blend of 100% recycled SBR (styrene butadiene rubber) and polyurethane. Total thickness of product shall be 1 1/2". Surface America RecSport Turf was used as a basis of design. See Specification Section 09 62 53 for specific information, product requirements, installation requirements, and warranty requirements. Include integrated 6" wide white lines made of the same type material as the balance of the field, located as shown. Include full-length lines at the beginning, ends and both sides of the turf, and at 5 yard increments as shown. Include 3, 6" wide, 3 foot-long white stripes at 36" intervals, as shown. Include 18" high numbering indicating the 10 yard, 20 yard, and 30 yard markings in white lettering made from the same turf material as the striping.
3. Existing Connex storage container - protect in place. Install Resilient Athletic Flooring Tile to fit tightly against the storage container.
4. Existing octagonal exercise equipment. Install around and under equipment to fit tightly against all points in contact with the concrete.
5. Future octagonal exercise equipment.
6. Existing C.L. fencing. Protect in place.
7. Existing C.L. fencing with attached wind screen. Protect in place.
8. Existing delivery access gate. Protect in place.
9. Existing concrete walk. 1' higher than adjacent reinforced concrete slab.
10. Existing 6" reinforced concrete slab. Sloped to drain @ 1%.
11. Existing cast iron storm drain cover. Synthetic Turf and Resilient Athletic Tile to be permanently affixed to cover.
12. Moorpark College Logo. 48" wide, proportionally high, constructed from Synthetic Turf, in three colors, Black, Blue, and White to match Moorpark College colors.



SURFACING PLAN SCALE: 1" = 100'-0"

SURFACING LEGEND:

-  NEW Resilient Athletic Floor Tile
-  NEW Synthetic Turf Surface



SECTION DETAIL SCALE: 1" = 1'-0"

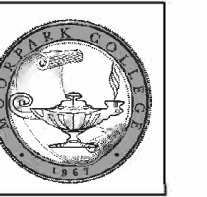
MOORPARK COLLEGE

7075 CAMPUS ROAD
MOORPARK, CA 93021
TEL: 805.378.1454
FAX: 805.378.1593

FACILITIES,
MAINTENANCE
and OPERATIONS

John Sinutko
Director

7075 CAMPUS ROAD
MOORPARK, CA 93021
TEL: 805.378.1454
FAX: 805.378.1593



**KINESIOLOGY
OUTDOOR
CLASSROOM
PHASE 2**

REVISIONS:

PLAN NUMBER:

BID No. 588

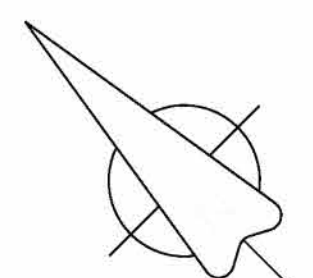
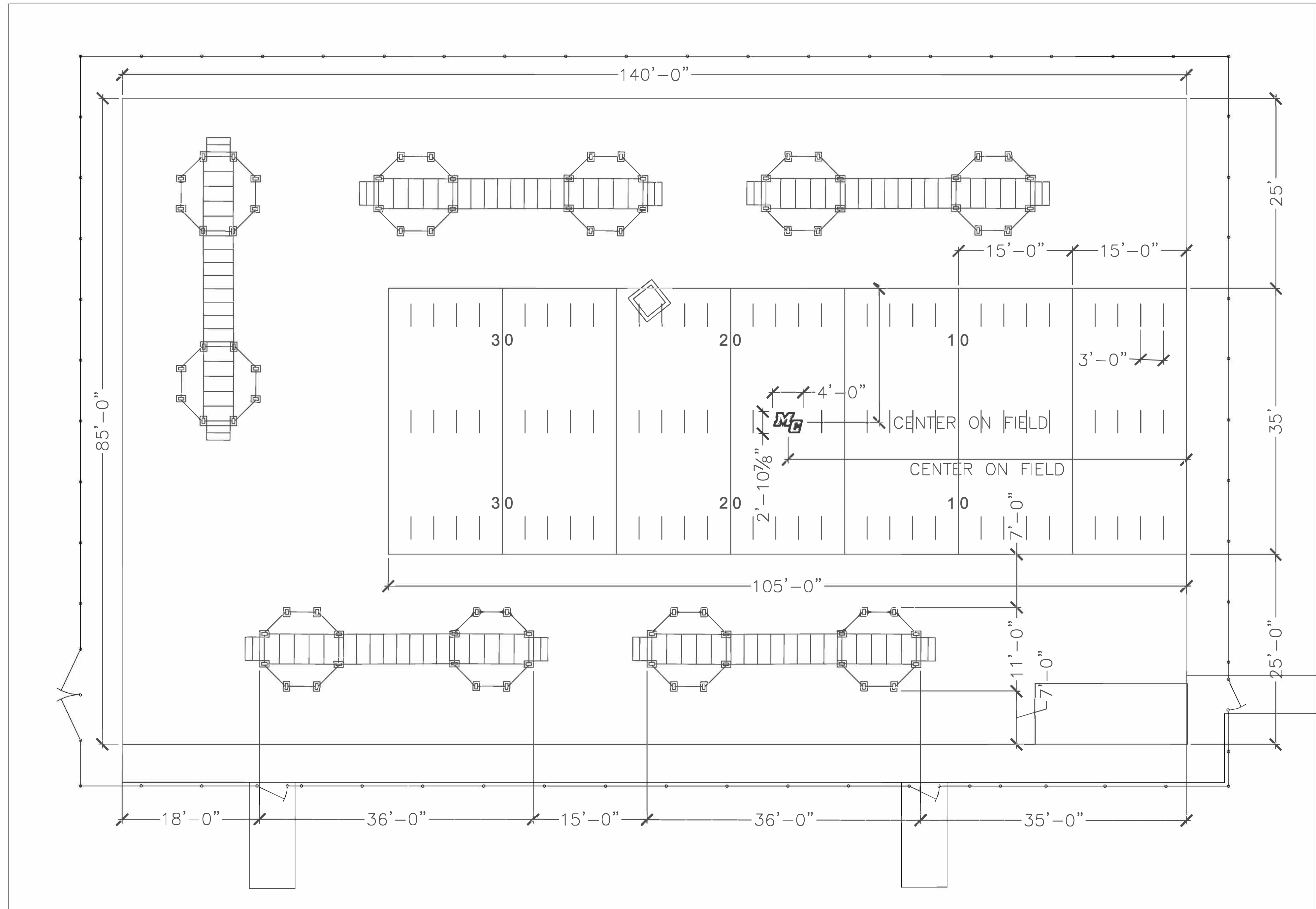
DRAWING TITLE:

DIMENSION PLAN

SCALE:
N/A
24x36D

PLOT DATE:
5.13.2019

SHEET NO:
G-2.00



DIMENSION PLAN SCALE: 1" = 100'- 0"

GENERAL NOTE:

1. Contractor to field verify all dimensions prior to beginning work.
2. Exercise apparatus shown on plan not a part of this contract.