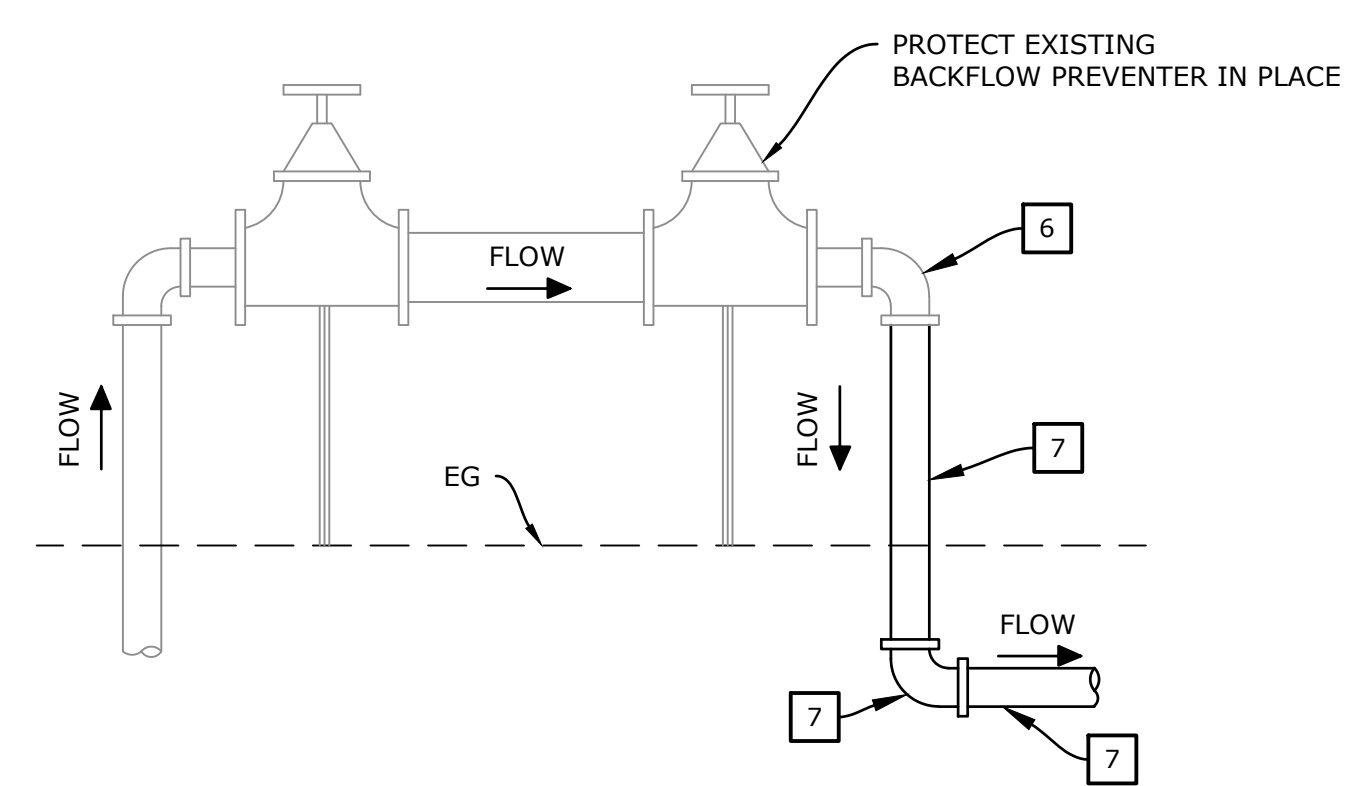


WATER UTILITY VAULT DETAIL
SCALE: 1" = 1'



BACKFLOW PREVENTER CONNECTION DETAIL
SCALE: NTS

DEMOLITION NOTES

- 1 CUT EXISTING WATERLINE AT POINTS OF CONNECTION AND REMOVE EXISTING WATERLINE. CONTRACTOR SHALL RESPONSIBLY DISPOSE OF MATERIAL.
- 2 CUT EXISTING IRRIGATION MAINLINE AT POINTS OF CONNECTION AND ABANDON IN PLACE PER VENTURA COUNTY WATERWORKS STANDARD PLATE W-16.
- 3 CUT EXISTING IRRIGATION MAINLINE AT POINTS OF CONNECTION AND REMOVE EXISTING IRRIGATION MAINLINE. CONTRACTOR SHALL RESPONSIBLY DISPOSE OF MATERIAL.
- 4 CUT EXISTING WATERLINE AT POINTS OF CONNECTION AND ABANDON IN PLACE PER VENTURA COUNTY WATERWORKS STANDARD PLATE W-16.
- 5 SAWCUT TO PROPOSED UTILITY TRENCH LIMITS AS SHOWN PER PLAN AND DETAILS "B" AND "C" ON SHEET 1. COLD PLANE 12" BEYOND SAWCUT LIMITS TO A MINIMUM DEPTH OF 1.5".
- 6 PROTECT EXISTING UTILITY IN PLACE.
- 7 REMOVE EXISTING GALVANIZED STEEL WATERLINE, FITTINGS, AND APPURTENANCES TO NEAREST PROTECT JOINT. CONTRACTOR SHALL RESPONSIBLY DISPOSE OF MATERIAL.
- 8 REMOVE EXISTING GATE OR BALL VALVE. CONTRACTOR SHALL RESPONSIBLY DISPOSE OF MATERIAL.
- 9 REMOVE EXISTING PRESSURE REDUCING VALVE. CONTRACTOR SHALL RESPONSIBLY DISPOSE OF MATERIAL.

EASEMENT LEGEND

- 1 EXISTING 15-FOOT WIDE EASEMENT IN FAVOR OF VENTURA COUNTY WATERWORKS FOR MAINTENANCE OF FIREWATER LINE.

REVISIONS			
MARK	DATE	DESCRIPTION	BY
Δ	07/29/19	ADDENDUM #1	



ECG
Encompass Consultant Group
333 N. LANTANA ST, SUITE 287, CAMARILLO, CA 93010
PHONE: 805.322.4443 WEBSITE: WWW.ECCIVIL.COM

GLEN H. PACE DATE: 07/05/2019
PROJECT ENGINEER
R.C.E. 61,468

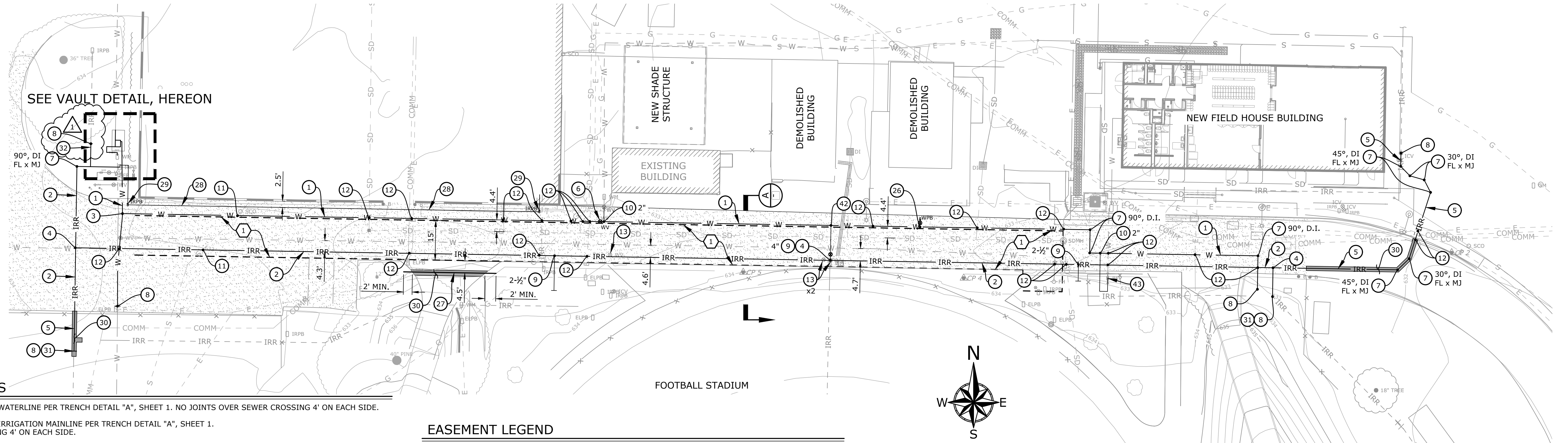
**STADIUM ROAD WATERLINE REPLACEMENT
DEMOLITION PLAN
MOORPARK COLLEGE
MOORPARK, CA**

SCALE: HORIZ. 20 VERT. VERT

WORK ORDER 0075.05
DRAWN BY: JEA
CHECKED BY: GHP

SHEET NO. 2 OF 4

DRAWING: n:\projects\0075\05_waterline\engineering\acad\improvements\0075_water_1rr.dwg



CONSTRUCTION NOTES

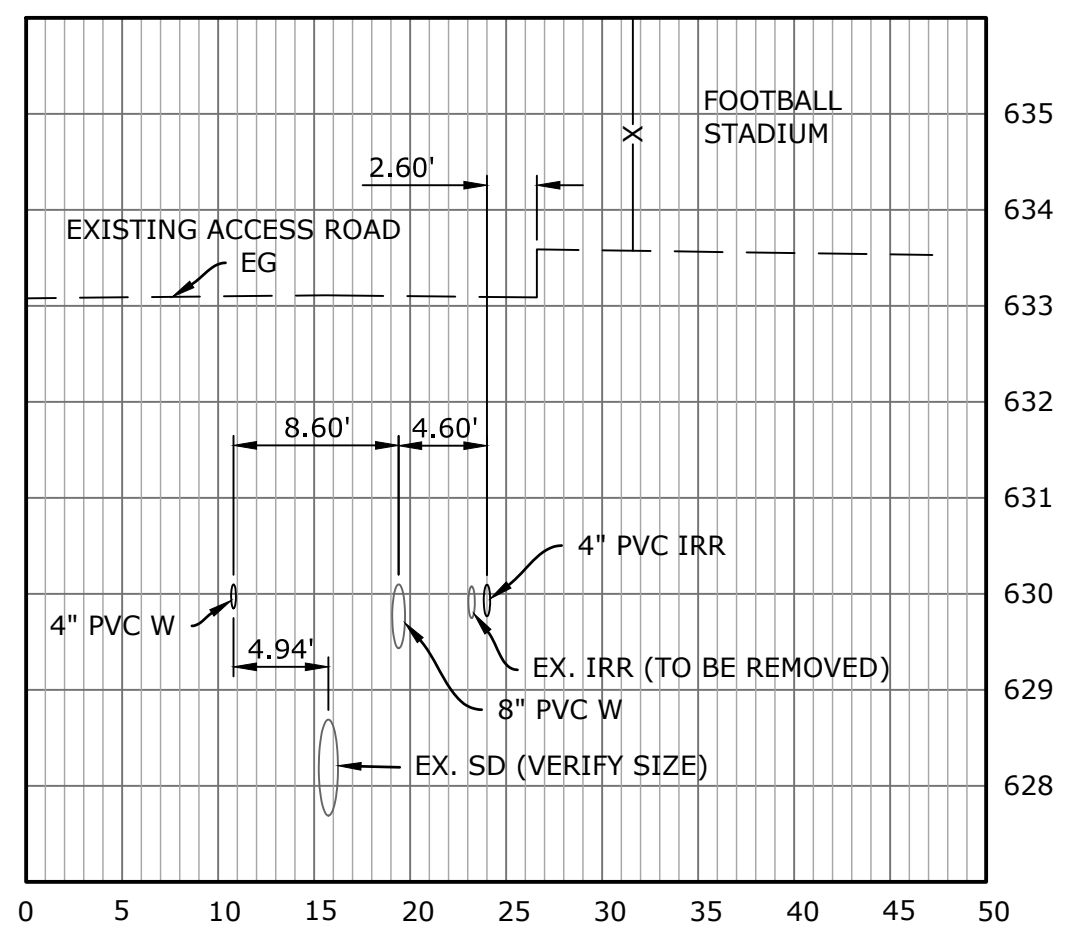
- 1 CONSTRUCT 4" C900 CL 235 PVC WATERLINE PER TRENCH DETAIL "A", SHEET 1. NO JOINTS OVER SEWER CROSSING 4' ON EACH SIDE.
- 2 CONSTRUCT 4" C900 CL 235 PVC IRRIGATION MAINLINE PER TRENCH DETAIL "A", SHEET 1. NO JOINTS OVER SEWER CROSSING 4' ON EACH SIDE.
- 3 INSTALL 4" DUCTILE IRON TEE AND CONCRETE THRUST BLOCK PER VENTURA COUNTY WATERWORKS STANDARD PLATES W-15 AND W-19.
- 4 INSTALL 4" DUCTILE IRON TEE AND CONCRETE THRUST BLOCK PER VENTURA COUNTY WATERWORKS STANDARD PLATES W-15 AND W-19. FLANGE x MECHANICAL JOINT ON ALL SIDES. LEEMCO EPOXY COATED OR APPROVED EQUAL.
- 5 CONSTRUCT 4" C900 CL 235 PVC IRRIGATION MAINLINE PER TRENCH DETAIL "B", SHEET 1. NO JOINTS OVER SEWER CROSSING 4' ON EACH SIDE.
- 6 CONSTRUCT 4" RESILIENT WEDGE GATE VALVE WITH VALVE BOX PER VENTURA COUNTY WATERWORKS PER STANDARD PLATE W-2.
- 7 CONSTRUCT HORIZONTAL BENDS WITH CONCRETE THRUST BLOCK PER VENTURA COUNTY WATERWORKS STANDARD PLATE W-19. ANGLE AND MATERIAL PER PLAN. LEEMCO EPOXY COATED OR APPROVED EQUAL.
- 8 CONNECT TO EXISTING WATERLINE/IRRIGATION MAINLINE.
- 9 POINT OF CONNECTION TO IRRIGATION LATERAL. CONSTRUCT PVC CL 315 IRRIGATION LATERAL WITH END CAP. DIAMETER PER PLAN.
- 10 POINT OF CONNECTION TO WATER LATERAL. CONSTRUCT SCH 80 PVC WATER LATERAL. DIAMETER PER PLAN.
- 11 CONSTRUCT SEWER CROSSING PER DETAIL "C", SHEET 1 AND VENTURA COUNTY SEWER MANUAL, APPENDIX II. WATERLINE SHALL NOT HAVE JOINTS WITHIN 4' ON EACH SIDE OF SEWER LINE.
- 12 CONSTRUCT UTILITY CROSSING PER VENTURA COUNTY WATERWORKS STANDARD PLATE W-18. CONTRACTOR SHALL POTHOLE ALL UTILITY CROSSINGS TO VERIFY SIZE, DEPTH, AND LOCATION AND SHALL THE ENGINEER OF ANY PROPOSED UTILITY CONFLICTS.
- 13 REPLACE IRRIGATION GATE VALVE AS NECESSARY PER VENTURA COUNTY WATERWORKS STANDARD PLATE W-2.
- 14 CONSTRUCT 3" GALVANIZED STEEL PIPE WATERLINE.
- 15 CONSTRUCT 3/4" GALVANIZED STEEL PIPE WATERLINE.
- 16 INSTALL 3" DUCTILE IRON BALL VALVE WITH INSULATION KIT.
- 17 INSTALL 3" PRESSURE REDUCING VALVE WITH INSULATION KIT.
- 18 CONSTRUCT 3" GALVANIZED STEEL ELBOW.
- 19 INSTALL 3/4" DUCTILE IRON BALL VALVE WITH INSULATION KIT.
- 20 INSTALL 3" GALVANIZED STEEL FEMALE-FEMALE THREADED JOINT OR GALVANIZED STEEL COMPRESSION JOINT IF CONNECTING TO NON-THREADED OR PLASTIC PIPE.
- 21 CONSTRUCT 3" GALVANIZED STEEL RISER WITH TWO GALVANIZED STEEL ELBOWS. RISER LENGTH PER PLAN.
- 22 CONSTRUCT 3" x 2" GALVANIZED STEEL REDUCER. IF OTHER METAL IS USED INSTALL WITH INSULATION KIT.
- 23 INSTALL 3/4" GALVANIZED STEEL FEMALE-FEMALE THREADED JOINT OR GALVANIZED STEEL COMPRESSION JOINT IF EXISTING PIPE IS NOT THREADED.
- 24 CONSTRUCT 3" GALVANIZED STEEL UNION FITTING.
- 25 CONSTRUCT 3" GALVANIZED STEEL TEE.
- 26 CONSTRUCT 3-FOOT, 2" SCH 80 PVC WATER LATERAL WITH RESILIENT WEDGE GATE VALVE AND BROOKS 3MB CONCRETE METER BOX WITH TRAFFIC RATED LID OR APPROVED EQUAL. CAP END OF LATERAL FOR FUTURE CONNECTION.
- 27 CONSTRUCT 3" SCH 40 PVC IRRIGATION CONTROL WIRE CONDUIT PER DETAIL "D", SHEET 1. ENDS OF CONDUIT SHALL EXTEND 2 FEET BEYOND THE EXISTING BACK OF CURB. CAP BOTH ENDS OF CONDUIT FOR FUTURE USE.
- 28 CONSTRUCT 1" SCH 40 PVC IRRIGATION CONTROL WIRE CONDUIT PER DETAIL "D", SHEET 1.
- 29 INSTALL J&R CONCRETE NO 3-1/2-T SERIES PULL BOX WITH H-20 COVER OR APPROVED EQUAL.
- 30 CONSTRUCT AC PAVEMENT STRUCTURAL SECTION TO MATCH EXISTING (3" AC OVER 6" AB MIN).
- 31 INSTALL 4" MEGA-COUPLING RESTRAINED JOINT SERIES 3804, OR APPROVED EQUAL.
- 32 CONSTRUCT 1-1/4" PVC CL 315 IRRIGATION LINE PER TRENCH DETAIL "B", SHEET 1.
- 33 CONSTRUCT 2-1/2" GALVANIZED STEEL PIPE WATERLINE.
- 34 INSTALL 2-1/2" x 3" GALVANIZED STEEL REDUCER.
- 35 CONSTRUCT 3" GALVANIZED STEEL PIPE WATERLINE PER TRENCH DETAIL "B", SHEET 1.
- 36 CONSTRUCT 2" x 3/4" GALVANIZED STEEL REDUCER. IF OTHER METAL IS USED INSTALL WITH INSULATION KIT.
- 37 INSTALL 2" DUCTILE IRON BALL VALVE WITH INSULATION KIT.
- 38 CONSTRUCT 2" GALVANIZED STEEL UNION FITTING.
- 39 CONSTRUCT 2" GALVANIZED STEEL PIPE WATERLINE.
- 40 CONSTRUCT 2" GALVANIZED STEEL TEE.
- 41 CONSTRUCT 2" GALVANIZED STEEL RISER WITH TWO GALVANIZED STEEL ELBOWS. RISER LENGTH PER PLAN.
- 42 CONSTRUCT 2 1/2" SCH 80 PVC WATER LATERAL WITH RESILIENT WEDGE GATE VALVE TO SERVE DRINKING FOUNTAIN.
- 43 CONNECT TO EXISTING BACKFLOW DEVICE.

EASEMENT LEGEND

- 1 EXISTING 15-FOOT WIDE EASEMENT IN FAVOR OF VENTURA COUNTY WATERWORKS FOR MAINTENANCE OF FIREWATER LINE.

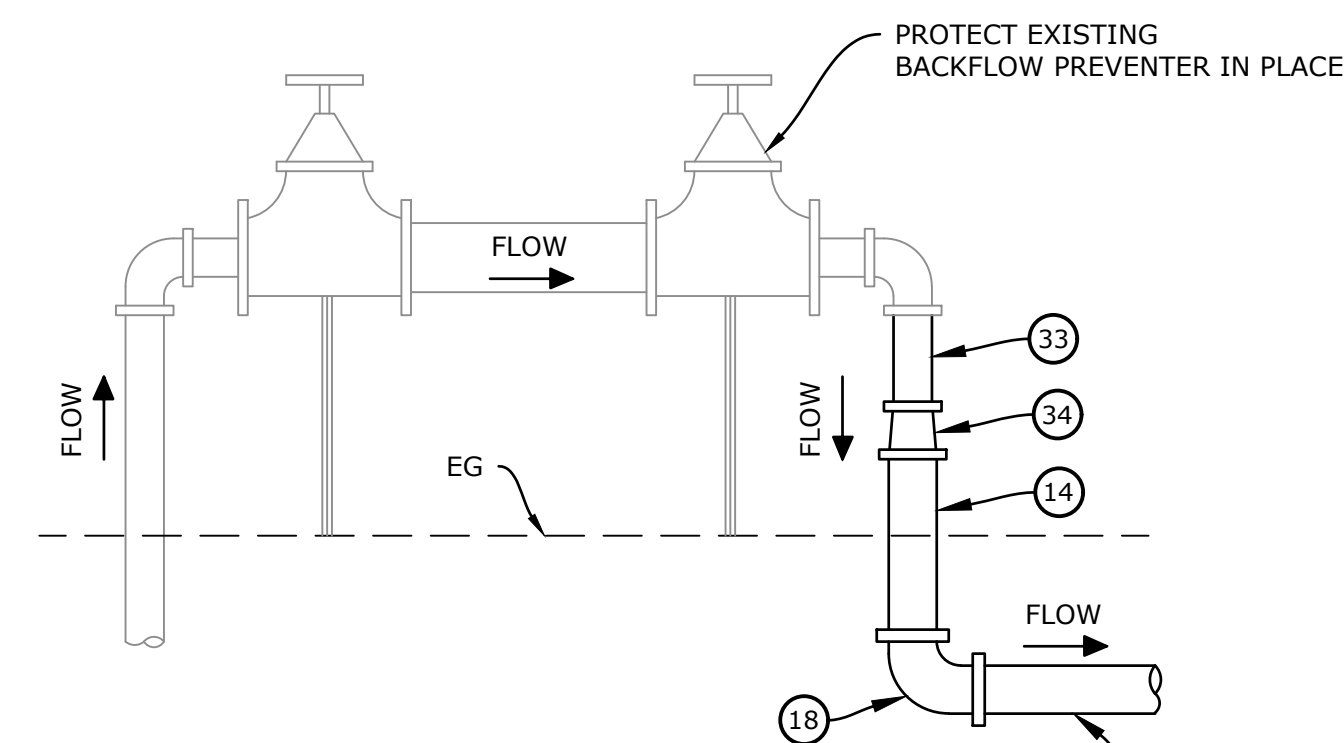
HATCH LEGEND

- AC PAVING BY OTHERS
- CONSTRUCT AC PAVEMENT STRUCTURAL SECTION TO MATCH EXISTING



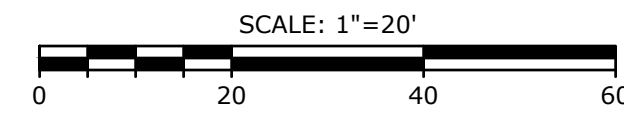
UTILITY SEPARATION DETAIL (A)

HORIZ: 1" = 10'
VERT: 1" = 2'



BACKFLOW PREVENTER CONNECTION DETAIL

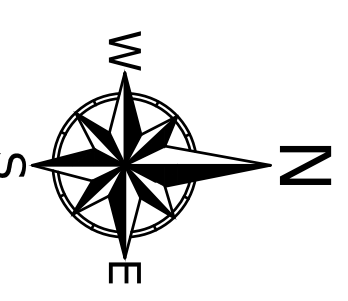
SCALE: NTS



PROTECT EXISTING BACKFLOW PREVENTER IN PLACE. SEE CONNECTION DETAIL BELOW

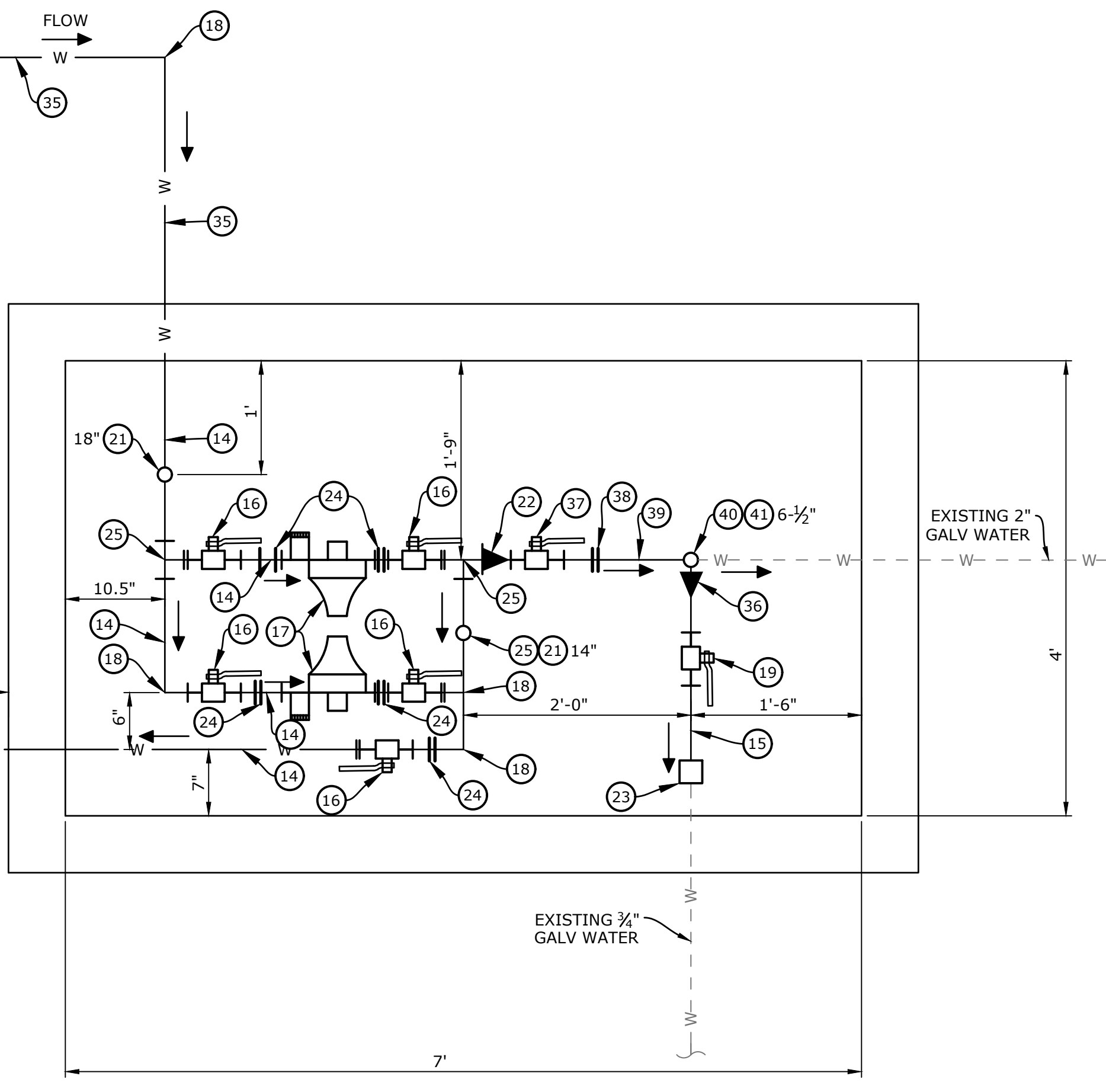
PROTECT EXISTING WATERLINE AND WATER METER IN PLACE

SEE PLAN ABOVE FOR CONTINUATION



WATER UTILITY VAULT DETAIL

SCALE: 1" = 1'



REVISIONS			
MARK	DATE	DESCRIPTION	BY
Δ	07/29/19	ADDENDUM #1	



ECG
Encompass Consultant Group
333 N. LANTANA ST., SUITE 287, CAMARILLO, CA 93010
PHONE: 805.322.4443 WEBSITE: WWW.ECCG.CIVIL.COM

GLEN H. PACE DATE: 07/05/2019
PROJECT ENGINEER
R.C.E. 61,468

STADIUM ROAD WATERLINE REPLACEMENT WATER PLAN
MOORPARK COLLEGE
MOORPARK, CA

SCALE: HORIZ. 20 VERT. VERT

WORK ORDER 0075.05
DRAWN BY: JEA
CHECKED BY: GHP

SHEET NO. 3 OF 4

DRAWING: n:\projects\0075\05_waterline\engineering\acad\improvements\0075_water_line.dwg