



Ventura County Community College District
761 East Daily Drive, Camarillo, CA 93010
Purchasing Department

TO: All Bidders April 12, 2021
FROM: Janice Kisch, Purchasing Specialist
SUBJECT: Bid 598 Moorpark College Wayfinding Signage Project

Bid 598 Moorpark College Wayfinding Signage Project – Addendum 1

This addendum is hereby made a part of the contract documents to the same extent as though it was originally included therein and takes precedence over the original documents.

Note that the Bid Proposal Form requires acknowledgement of receipt of all addenda.

It is the responsibility of the Bidder to verify that their Bid Proposal and all addenda has been received and delivered to the VCCCD Purchasing Department prior to the bid opening date and time. Verification of receipt can be obtained through the listed Purchasing Specialist.

New Information: (With the exception of Item #1 and #2, separate files will be on the website for each of the below listed documents)

1. Update to Drawings, sign type C-4 B for America's Teaching Zoo
2. Demolition of Existing Signs and Structures - List and Site Photos (follow here)
3. Site Map of Demolition Location Plan
4. Site Map of Pedestrian Sign Location Plan
5. Site Map of Vehicular Sign Location Plan
6. Excel Spreadsheet list of Pedestrian SignMessage Summary
7. Excel Spreadsheet list of and Vehicular SignMessage Summary

Jobwalk Notes: The following are notes taken from the job walk:

1. The Bid number (Bid 598) must be used in all correspondence relating to this Bid.
2. No prepayment for materials
3. VCCCD pays invoices with Net-30 terms
4. Contractors must hire "A" Contractors, or other appropriately licensed subcontractors as needed
5. There is no building interior signage included in this bid

6. Existing signage will be demolished by the Contractor. Refer to Addendum 1 for locations and site photos.
7. Demolition, debris disposal, and site preparation to be performed by Contractor
8. The signage on campus is divided into 3 color coded zones:
 - o Upper – Mustard Yellow
 - o Lower – Avocado Green
 - o West Campus – Crimson
9. For quick identification, buildings and other destinations such as athletic fields have a 2 letter code. The only exception is EATM with a 4 letter designation. Parking lots have a number code.
10. There are Cardinal notations on some signs to help identify their zone location: Upper, Lower or West Campus. See page Page 2 – Zone indicators in signage drawings for details
11. Vehicular and pedestrian signage is included in the specifications
12. Wireless connectivity is required for the digital players on the monument sign located at University Dr.
13. Contractor is responsible for bringing electrical power from the nearest campus light pole.
14. Owner will bring power to a lock box within 20 ft. of the proposed Monument sign on University Dr.
15. A few locations have different or unique signs (i.e. EATM)
16. Campus will be retaining some building name signage and changing others- see Addendum notes
17. Disregard the Sign Agent Software availability. Use information provided on Addendum #1 – See Addendum #1
18. QR Codes in parking lots and other signs will provide additional functionality. Final QR code to be provided for each location by Owner.
19. There are multiple Building ID sign sizes to accommodate for different conditions. Contractor shall inform of any dimensional discrepancies after field verification.
20. There are various surfaces on the buildings and contractor shall use the proper attachment methods for each unique condition/material.
21. Lift use is permissible. Owner will need to verify capacity of surfaces to support equipment used in sign installation. Contractor will need to submit equipment use plan to Owner for approval.
22. Some building signs are being removed so the area will need to be painted (Stock colors available)
23. Electrical lighting must be compatible with existing power. All materials and equipment shall be supplied by Contractor. See construction documents for electrical information.
24. Dig Alert – Contractor's responsibility – Owner will mark campus utilities in phases before work is done in specified areas.

1. Update to Drawings

Please use the updated information here or PDF provided for Sign type C4-B.

MOORPARK COLLEGE
CAMPUS WAYFINDING

SIGN TYPE
C4-B

Tertiary Monument ID
Zoo (single sided)

These drawings are not for construction - the information contained herein is for design intent only.

Contractors are responsible for field verification of all conditions and dimensions and are responsible to obtain L&P of all work items prior to beginning production and/or fabrication & installation. Contractors shall submit shop drawings for L&P to review and approval prior to fabrication or construction.

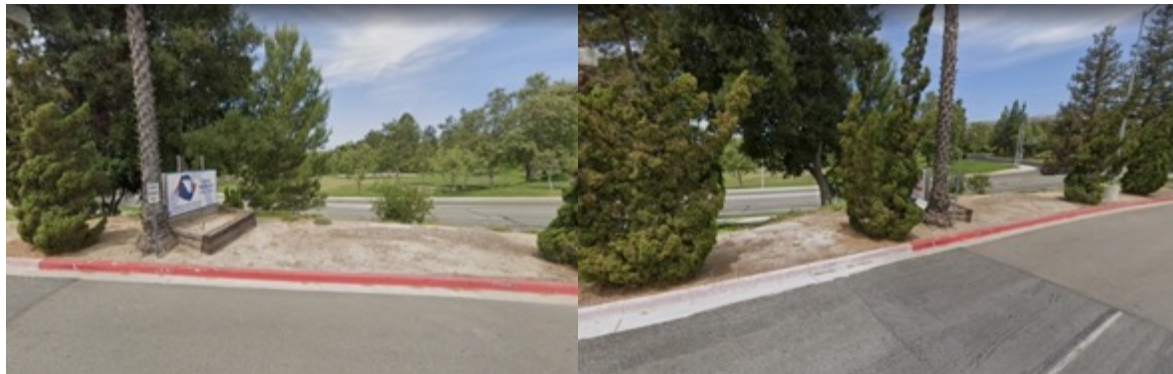
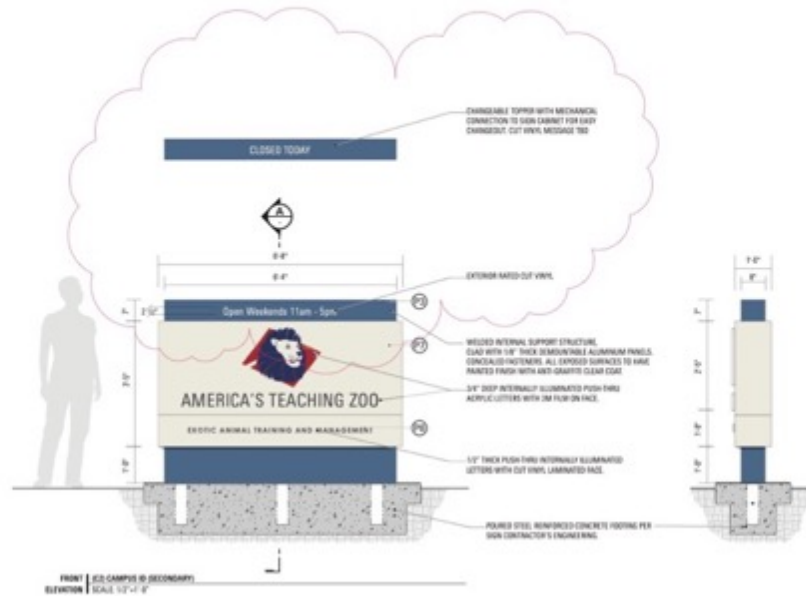
Contractors shall submit material, color, and samples of typical design treatments prior to beginning fabrication for review and approval by L&P.

DATE
03.26.2021

PAGE
12



A note about all drawings and plans issued or updated after 03/26/2021 shall be in accordance with the L&P of the project and shall be in accordance with the L&P of the project.



2. Demolition of Existing Signs & Structures

Please refer to list below and separate location plan provided as a separate PDF.

Type	Location	Quantity	Notes
DEMO	1	1	
DEMO	2	1	
DEMO	3	1	
DEMO	4	1	
DEMO	5	1	
DEMO	6	1	
DEMO	7	1	
DEMO	8	1	
DEMO	9	1	
DEMO	10	1	
DEMO	11	1	
DEMO	12	1	
DEMO	13	1	Remove posts
DEMO	14	1	Remove posts
DEMO	15	1	
DEMO	16	1	
DEMO	17	1	
DEMO	18	1	
DEMO	19	1	
DEMO	20	1	
DEMO	21	1	
TOTAL		21	











































3. Vehicular Signage

Please refer to list below and separate location plan provided as a separate PDF.

C2-Upper Campus Monument ID							
Type	Location	#	Quant ity	Level Colour	Notes	Message	Street Address
C2	CX	1	1	1FF2FF	Medium 28 wide. Theres an irrigation system. Theres a tree on the medium, its on the left side looking into the parking lot. Located 28 back & all the way to the left)	MOORPARK COLLEGE	7526 CAMPUS ROAD
TOTAL			1				
C3-West Campus Monument ID							
Type	Location	#	Quant ity	Zone Color	Notes	Message	Street Address
C3	CX	1	1	1FF2FF		MOORPARK COLLEGE	?
TOTAL			1				
C4-Tertiary Monument ID							
Type	Location	#	Quant ity	Zone Color	Destination	Notes	
C4	CX	1	1	1FF2FF	CDC Child Development Center	Install between light post in the right side and unauthorized vehicles warning sign. (Space between light post and warning sign is about 20)Install at a 45 degree angle facing south east	
C4	CX	2	1	1FF2FF			
TOTAL			2				
DV1-Vehicular Directional Single Sided							
Type	Location	#	Quant ity	Arrow	Destination	Symbol	Notes
DV1	CX	1	1	Arrow Right	Griffin Stadium	Parking Lower	
					Field Hockey Stadium		
					Soccer Field		
DV1	CX	2	1	Arrow Left	Gym	Parking Lower	464 / Install on sofscape 20 beyond existing stop sign
					Campus Police		
					Baseball Field		
					Softball Field		
					Zoo Deliveries		
DV1	CX	3	1	Arrow Right	Parking Structure	Parking Lower	462 / Install on existing light pole 7
					Campus Police		
					Gym		
					Baseball Field		

				arrows-up	Griffin Stadium		
DV1	CX	4	1	Arrow Left	Academic Center	Parking Lower	469 / Install in planter area about 22 North of stop sign
				arrows-up	UPPER CAMPUS	Parking Upper	
					Child Development		
					Admissions		
					Fountain Hall		
DV1	CX	5	1	arrows-up	Admissions	Parking Upper	
					Life/Physical Sciences		
					Fountain Hall	Parking West	
					Technology		
				arrows-up	Performing Arts		
DV1	CX	6	1	arrows-up	Life/Physical Sciences	Parking Upper	
					Health Sciences		
					Student Services		
					Campus Center		
				Arrow Left	Observatory	Parking Upper	
DV1	CX	7	1	Arrow Left	VISITORS	Parking Upper	491 / Install about 20 before stop sign on softscape
					Admissions		
					Fountain Hall		
					Administration		
				arrows-up	Performing Arts	Parking West	
DV1	CX	8	1	Arrow Right	VISITORS	Parking Upper	493 / Install about 35 before existing directional (before the tree) this are is clear and offers great visibility
					Admissions		
					Fountain Hall		
					Administration		
					Library		
DV1	CX	9	1	Arrow Right	Performing Arts	Parking West	507 / Install location ok
					Music		
					Zoo / EATM		
				Arrow Left	Communications	Parking Upper	
					Administration		
DV1	CX	10	1	Arrow Right	Communications	Parking West	508 / Install location ok where existing sign is (8' Wide)
					Performing Arts		
					Music		
					Zoo / EATM		
				arrows-up	UPPER CAMPUS	Parking Upper	
DV1	CX	11	1	Arrow Right	Facilities/Maintenance		

			arrows-up		Performing Arts	Parking West	
					Zoo / EATM		
			arrows-up		UPPER CAMPUS	Parking Upper	
					Admissions		
DV1	CX	12	1		Zoo Deliveries	arrows-up	
					Student Garden	Arrow Right	
DV1	CX	13	1	Arrow Right	Communications	Parking Upper	508 / Install location ok where existing sign is (8' Wide)
					Humanities		
					Administration		
					Fountain Hall		
					Library		
	TOTAL		13				

DV2-Vehicular Directional (DbISided)

Type	Location	#	Quantity	Arrow	Destination	Symbol	Notes
DV2	CX	3	1	arrows-up	Campus Center Parking	Parking Upper	477 / Install on planter about 5 North/East of letters that read AHEAD
					Student Services		
					Health Sciences		
				Arrow Left	Bookstore Receiving		
				Arrow Right	Observatory	Parking Upper	
				Arrow Right	Applied Arts	Parking Upper	
				arrows-up	Child Development	Parking Upper	
					Academic Center		
					Parking Structure		
					Griffin Stadium	Parking Lower	
	TOTAL		1				

**DV3-Vehicular Directional Small -
Single Sided**

Type	Location	#	Quantity	Arrow	Destination	Symbol	Notes
DV3	CX	1	1	Arrow Left	Griffin Stadium	Parking Lower	
				arrows-up	UPPER CAMPUS	Parking Upper	
				arrows-up	WEST CAMPUS	Parking West	
DV3	CX	2	1	Arrow Right	LOWER & UPPER CAMPUS	Parking Lower	
					*(add yellow symbol to line above, next to green P)	Parking Upper	
				arrows-up	WEST CAMPUS	Parking West	
				arrows-up	Facilities/Maintenance		
	TOTAL		2				

S1-Street Sign						
Type	Location	#	Quantity	Side 1	Side 2	Notes
S1	CX	1	1	Athlete Row	Athlete Row	Install on sofscape 14 in front of treeRight on the corner
S1	CX	2	1	Scholar Way	Scholar Way	
S1	CX	3	1	Ambition Road	Ambition Road	
S1	CX	4	1	Patrol Path	Patrol Path	
S1	CX	5	1	Gym Road	Gym Road	
S1	CX	6	1	Fast Pass	Fast Pass	
S1	CX	7	1	Sage Street	Sage Street	
S1	CX	8	1	Scholar Way	Scholar Way	
S1	CX	9	1	Athlete Row	Athlete Row	
S1	CX	10	1	Creator Court	Creator Court	
S1	CX	11	1	Athlete Row	Athlete Row	
S1	CX	12	1	Creator Court	Creator Court	
S1	CX	13	1	Raider Walk	Raider Walk	
S1	CX	14	1	Gym Road	Gym Road	
S1	CX	15	1	Kinder Court	Kinder Court	
S1	CX	16	1	Poppy Path	Poppy Path	
S1	CX	17	1	Poppy Path	Poppy Path	
S1	CX	18	1	Moon Walk	Moon Walk	
S1	CX	19	1	Ira Boulevard	Ira Boulevard	
S1	CX	20	1	Apricot Lane	Apricot Lane	
S1	CX	21	1	Ira Boulevard	Ira Boulevard	
S1	CX	22	1	Chumash Court	Chumash Court	
S1	CX	23	1	Ira Boulevard	Ira Boulevard	
S1	CX	24	1	Chumash Court	Chumash Court	
S1	CX	25	1	Sage Street	Sage Street	
S1	CX	26	1	Chumash Court	Chumash Court	
S1	CX	27	1	Scholar Way	Scholar Way	
S1	CX	28	1	Sage Street	Sage Street	
S1	CX	29	1	Scholar Way	Scholar Way	
S1	CX	30	1	Athlete Row	Athlete Row	Install on sofscape 14 in front of treeRight on the corner
TOTAL			30			

S2-Street Sign (Double Blades)						
Type	Location	#	Quantity	Panel 1	Panel 2	Notes
S2	CX	1	1	Apricot Lane	Chumash Court	
				Apricot Lane	Chumash Court	
S2	CX	2	1	Fast Pass	Athlete Row	
				Fast Pass	Athlete Row	

S2	CX	3	1	Athlete Row	Patrol Path
				Athlete Row	Patrol Path
S2	CX	4	1	Gym Road	Growth Path
				Gym Road	Growth Path
S2	CX	5	1	ASMC Way	Kinder Court
				ASMC Way	Kinder Court
S2	CX	6	1	Gym Road	Matilija Road
				Gym Road	Matilija Road
S2	CX	7	1	Matilija Road	Ambition Road
				Matilija Road	Ambition Road
S2	CX	8	1	Ambition Road	Rabbit Run
				Ambition Road	Rabbit Run
S2	CX	9	1	Ambition Road	Growth Path
				Ambition Road	Growth Path
S2	CX	10	1	Moon Walk	ASMC Way
				Moon Walk	ASMC Way
S2	CX	11	1	Moon Walk	Milky Way
				Moon Walk	Milky Way
S2	CX	12	1	Apricot Lane	Scholar Way
				Apricot Lane	Scholar Way
S2	CX	13	1	Apricot Lane	Sage Street
				Apricot Lane	Sage Street
S2	CX	14	1	Apricot Lane	Major Road
				Apricot Lane	Major Road
S2	CX	15	1	Sage Street	Scholar Way
				Sage Street	Scholar Way
S2	CX	16	1	Rabbit Run	Harmony Road
				Rabbit Run	Harmony Road
S2	CX	17	1	Milky Way	Raider Walk
				Milky Way	Raider Walk
S2	CX	18	1	ASMC Way	Raider Walk
				ASMC Way	Raider Walk
S2	CX	19	1	Major Road	Raider Walk
				Major Road	Raider Walk
S2	CX	20	1	Harmony Road	Major Road
				Harmony Road	Major Road
S2	CX	21	1	Patrol Path	Gym Road
				Patrol Path	Gym Road
TOTAL			21		

P1-Parking ID (Post Mounted)						
Type	Location	#	Quantity	Number	Campus Zone Color	Notes

P1	CX	1	1	1	P5 - Lower Campus: Olive Green	445 / Install on sofscape to the right of existing parking by permit only signInstall about 6 in to the right, from the edge of entryway
				1		
P1	CX	2	1	2	P5 - Lower Campus: Olive Green	Look for post for mounting.
				2		
P1	CX	3	1	1	P5 - Lower Campus: Olive Green	417 / Install where existing tree is to the right of last parking spot (tree to be removed)Option: install on existing 5 square light post beyond emergency sign (ADD PARKING OVERFLOW ID)
				1		
P1	CX	4	1	3	P5 - Lower Campus: Olive Green	460 / Install on existing light pole
				3		
P1	CX	5	1	4	P5 - Lower Campus: Olive Green	462 / Install on existing light pole 7
				4		
P1	CX	6	1	4	P5 - Lower Campus: Olive Green	462 / Install on existing light pole 7
				4		
P1	CX	7	1	5	P5 - Lower Campus: Olive Green	466 / Install on 7post to the left of parking lot entrance (ADD PARKING OVERFLOW ID)
				5		
P1	CX	8	1	7	P5 - Lower Campus: Olive Green	Gym Back Lot / 7 post
				7		
P1	CX	9	1	8	P5 - Lower Campus: Olive Green	Mount on Lightpole
				8		
P1	CX	10	1	8	P5 - Lower Campus: Olive Green	468 / Install in planter area about 5 in front of existing vehicular directional (existing vehicular directional to be removed) (ADD PARKING OVERFLOW ID)
				8		
P1	CX	11	1	9	P6 - Upper Campus: Golden Yellow	470 / Install on planter section to the left of entrance about 5 in (ADD PARKING OVERFLOW ID)
				9		
P1	CX	12	1	10	P6 - Upper Campus: Golden Yellow	470 / Install on planter section to the left of entrance about 5 in (ADD PARKING OVERFLOW ID)
				10		
P1	CX	13	1	11	P6 - Upper Campus: Golden Yellow	
				11		

P1	CX	14	1	13	P6 - Upper Campus: Golden Yellow	7 diam post
				13		
P1	CX	15	1	13	P6 - Upper Campus: Golden Yellow	New post required
				13		
P1	CX	16	1	14	P6 - Upper Campus: Golden Yellow	7" post
				14		
P1	CX	17	1	14	P6 - Upper Campus: Golden Yellow	Need location photo.
				14		
P1	CX	18	1	14	P6 - Upper Campus: Golden Yellow	New post or trim tree.
				14		
P1	CX	19	1	12	P6 - Upper Campus: Golden Yellow	P1ADDITIONAL install on 7 postadd OVERFLOW ID
				12		
P1	CX	20	1	15	P6 - Upper Campus: Golden Yellow	481 / New post / Irrigation system on site
				15		
P1	CX	21	1	15	P6 - Upper Campus: Golden Yellow	483 / 7" post
				15		
P1	CX	22	1	16	P6 - Upper Campus: Golden Yellow	484 / New post Or on existing square post (Square post too short and 47 from entryway)
				16		
P1	CX	23	1	16	P6 - Upper Campus: Golden Yellow	489 / 7" post
				16		
P1	CX	24	1	17	P6 - Upper Campus: Golden Yellow	493 7" post
				17		
P1	CX	25	1	17	P6 - Upper Campus: Golden Yellow	7" post
				17		
P1	CX	26	1	17	P6 - Upper Campus: Golden Yellow	495 . 7" post
				17		
P1	CX	27	1	17	P6 - Upper Campus: Golden Yellow	Sign not needed.New post required Irrigation system on site
				17		
P1	CX	28	1	18	P6 - Upper Campus: Golden Yellow	496 / 10" post (street light post)Alternate location: adjacent post about 40 further back (see second picture).
				18		
P1	CX	29	1	18	P6 - Upper Campus: Golden Yellow	7" post
				18		
P1	CX	30	1	18	P6 - Upper Campus: Golden Yellow	504 / 7" post
				18		

P1	CX	31	1	19	P9 - West Campus: Terracota Red	P1ADDITIONAL 7post
				19		
P1	CX	32	1	20	P9 - West Campus: Terracota Red	On existing light post
				20		
P1	CX	33	1	21	P9 - West Campus: Terracota Red	On existing light post
				21		
P1	CX	34	1	22	P9 - West Campus: Terracota Red	
				22		
P1	CX	35	1	3		Add two signs here
				3		
TOTAL			35			

P2-Parking ID (PV Structure)						
Type	Location	#	Quantity	Panel 1	Notes	Campus Zone Color
P2	CX	1	1	15	(ADD PARKING OVERFLOW ID)	P6 - Upper Campus: Golden Yellow
P2	CX	2	1	15	P1ADDITIONAL Install on 7 post	P6 - Upper Campus: Golden Yellow
P2	CX	3	1	15		P6 - Upper Campus: Golden Yellow
P2	CX	4	1	15		P6 - Upper Campus: Golden Yellow
P2	CX	5	1	16		P6 - Upper Campus: Golden Yellow
P2	CX	6	1	16		P6 - Upper Campus: Golden Yellow
P2	CX	7	1	16		P6 - Upper Campus: Golden Yellow
P2	CX	8	1	16		P6 - Upper Campus: Golden Yellow
P2	CX	9	1	17		P6 - Upper Campus: Golden Yellow
P2	CX	10	1	17		P6 - Upper Campus: Golden Yellow
P2	CX	11	1	17		P6 - Upper Campus: Golden Yellow
P2	CX	12	1	18		P6 - Upper Campus: Golden Yellow
P2	CX	13	1	18		P6 - Upper Campus: Golden Yellow
P2	CX	14	1	18		P6 - Upper Campus: Golden Yellow
P2	CX	15	1	16 & 15 - Accessible		P6 - Upper Campus: Golden Yellow
TOTAL			15			

P3-Parking ID (wall mount)						
Type	Location	#	Quantity	Message	Notes	Campus Zone Color
P3	CX	1	1	6	1166 / Height 49 Install 2 bellow camera on east facing sideOption: install centered on parking structure	P5 - Lower Campus: Olive Green

P3	CX	2	1	6	1175 / Height 49 Install 1 to right side of camera Option: install centered on parking structure	P5 - Lower Campus: Olive Green
P3	CX	3	1	6	1164	P5 - Lower Campus: Olive Green
P3	CX	4	1	6	1164 / Height 49 Install 2 bellow camera on south facing side (and on east facing side)Option: install centered on parking structure	P5 - Lower Campus: Olive Green
TOTAL			4			

**P4-Parking ID
(Overflow Options)**

Type	Location	#	Quantity	Message	Notes	Campus Zone Color
P4	CX	1	1	[P] Additional Parking Use: 3 & 6		P5 - Lower Campus: Olive Green
				[P] Additional Parking Use: 3 & 6		
P4	CX	2	1	[P] Additional Parking Use: 18	avoid hydrant and stop sign near by	
				[P] Additional Parking Use: 18		
P4	CX	3	1	[P] Additional Parking Use: 4 & 6		P5 - Lower Campus: Olive Green
				[P] Additional Parking Use: 4 & 6		
P4	CX	4	1	[P] Additional Parking Use: 6		P5 - Lower Campus: Olive Green
				[P] Additional Parking Use: 6		
P4	CX	5	1	[P] Overflow Parking Use: 6		P5 - Lower Campus: Olive Green
				[P] Overflow Parking Use: 6		
P4	CX	6	1	[P] Additional Parking Use: 8 & 6		P6 - Upper Campus: Golden Yellow
				[P] Additional Parking Use: 8 & 6		
P4	CX	7	1	[P] Additional Parking Use: 15		P6 - Upper Campus: Golden Yellow
				[P] Additional Parking Use: 15		
P4	CX	8	1	[P] Additional Parking Use: 18	avoid irrigation lines	
				[P] Additional Parking Use: 18		
TOTAL			8			

**P5-Parking
Informational (QR
Code)**

Type	Location	#	Quantity	Message	Notes	Campus Zone Color
P5	CX	1	1			
P5	CX	2	1			
P5	CX	3	1			
P5	CX	4	1			
P5	CX	5	1			

P5	CX	6	1
P5	CX	7	1
P5	CX	8	1
P5	CX	9	1
P5	CX	10	1
P5	CX	11	1
P5	CX	12	1
P5	CX	13	1
P5	CX	14	1
P5	CX	15	1
P5	CX	16	1
P5	CX	17	1
P5	CX	18	1
P5	CX	19	1
P5	CX	20	1
P5	CX	21	1
P5	CX	22	1
P5	CX	23	1
P5	CX	24	1
P5	CX	25	1
P5	CX	26	1
P5	CX	27	1
P5	CX	28	1
P5	CX	29	1
P5	CX	30	1
P5	CX	31	1
P5	CX	32	1
P5	CX	33	1
P5	CX	34	1
P5	CX	35	1
P5	CX	36	1
P5	CX	37	1
P5	CX	38	1
TOTAL		38	

4. Pedestrian Signage

Please refer to list below and separate location plan provided as a separate PDF.

K1-Information Kiosk (Freestanding)					
Type	#	Quantity	Zone Color		Notes
K1	1	1	LOWER CAMPUS		413 / Install 4 to the left side of existing emergency sign
K1	2	1	UPPER CAMPUS		498 / Location not suitable (existing vehicle path, see image). More suitable location by the student walkway intersection, see additional image and video.
K1	3	1	WEST CAMPUS		133 / Existing directional to be removed (3x8) installed 3 far back from side walk. Width of site 12
K1	4	1	LOWER CAMPUS		438 / Install in softscape at 45 angle matching softscape edge. Install about 3 in from edge of softscape
K1	5	1			
K1	6	1	LOWER CAMPUS		Do not block removable bollards -- 410 / Install on planter area to the left side of emergency sign
K1	7	1	LOWER CAMPUS		394 / Install on softscape 5 to the right of accessible path / or pour concrete pad to allow for double sided kiosk
K1	8	1	LOWER CAMPUS		FID near Gym, 1286 / Install facing north, right in front of tree
K1	9	1	UPPER CAMPUS		530 / Install to right side of existing tree
K1	10	1	UPPER CAMPUS		529 / Install next to bushes on the right side Option: install adjacent to walkway on the right side of grass area see second picture
K1	11	1	UPPER CAMPUS		Existing water manhole May pose a problem Option: install on opposite side (planter area next to path with rail)
K1	12	1	UPPER CAMPUS		Install on softscape between existing trees. (existing irrigation system on site) Space available between trees about 12 (CIMG 1249)
K1	13	1	UPPER CAMPUS		Install next to existing light pole
K1	14	1	West Campus		install on left side of walkway in place of existing directional sign
K1	15	1	West Campus		515 / Install on adjacent planter area next to tree.
K1	16	1	West Campus		Consider one sided version -- 157 / Kiosk should be facing north. Install by planter area adjacent to tree and recycle bin. Tree might impose install issues
K1	17	1	UPPER CAMPUS		094 / Install location ok but 0% visibility when coming from parking lot Option: install in place of existing 30m parking sign
K1	18	1			
K1	19	1			
TOTAL		19			

A1-Amenity ID (Freestanding)					
Type	#	Quantity	Message	Message (long)	Notes
A1	1	1	FF	FOOTBALL FIELD	419 / Install on softscape to left side of dog warning sign, (relocation of dog warning sign might be required)
A1	2	1	GF	GOLF	Golf Center / Install 8 to the right of fire hydrant

A1	3	1	GS	GRIFFIN STADIUM	426 / Install about 10 in front of fence
A1	4	1	CD	CHILD DEVELOPMENT CENTER	472 / Sign Not required in this location.Option install on sidewalk to the right side of stairs but not needed since building ID is visible
A1	5	1	BB	BASEBALL FIELD	Softball Entrance and Handball / . Install on sofscape 10' to the right side of existing no parking sign.
			SO/HB	BASEBALL FIELD	
TOTAL		5			

A2-Amenity ID Fence/Wall mount

Type	#	Quantity	Destination	Message (long)	Notes
A2	1	1	HF	FIELD HOCKEY	A2Install on fence
A2	2	1	SF	SOCCER FIELD	A2Install on fence
A2	3	1	TN	TENNIS COURTS	Installed on soft scape about 14 in front of existing drinking water fountain
A2	4	1	OT	OUTDOOR TRAINING	
A2	5	1			Softball Ent and Handball / . Install on sofscape 10 to the right side of existing no parking sign.
A2	6	1	GRIFFIN STADIUM		SIZE EXCEPTION - WILL BE LARGER THAN OTHER SIGNS OF THE SAME TYPE
TOTAL		6			

B1-Building ID Small (2 Sides)

Type	#	Quantity	Message	Notes
B1	1	1	PA	
B1	2	1	CP	1170? / Install on top right corner
B1	3	1	GM	
B1	4	1	TB	
B1	5	1	PS	
TOTAL		5		

B1.2. Building ID Small (Single Panel)

Type	#	Quantity	Message	Notes
B1.2	1	1	SS	Install facing west where existing sign reads CalWorks & EOPS, with limited visibility due to trees. (Trees to be trimmed)Option : install more right justified in between two trees located in front of building, see additional image
B1.2	2	1	CP	1165 / Install on top left corner
B1.2	3	1	HI	Install on the left side of wall adjacent to the hallway
B1.2	4	1	AD	

B1.2	5	1	HI	Install on the top right section of wall right before walking path.
B1.2	6	1	LL	Install location not suitable, 0% visibility Covered by trees
TOTAL		6		

B2 Building ID Medium (2 Sides)

Type	#	Quantity	Message	Notes
B2	1	1	AD	1263 / Location ok! Will just need to trim tree branches
B2	2	1	MB	Install location blocked by trees on both sides of entrance , trees must be trimmed
B2	3	1	LM	ok!
B2	4	1	LM	1248 / B2 Install location ok
B2	5	1	MB	Install location ok!
B2	6	1	HM	Install on Elevator structure TBD - To Installer: Caution with condition of precast at installation
B2	7	1	CO	Location ok
TOTAL		7		

B2.2 Building ID Medium (Single Panel)

Type	#	Quantity	Message	Notes
B2.2	1	1	PE	Install on top left corner
B2.2	2	1	CO	Cameras on corners limit install. Signs could be installed centered on building faces or, about 16 from the edge (See images)
B2.2	3	1	AD	
B2.2	4	1	CO	Cameras on corners / Trees limit visibility/install. Signs must be installed centered on building faces or, about 24in from the edge (See images)
B2.2	5	1	PE	Install on top right corner to the left of existing camera Option install centered on wall
B2.2	6	1	AA	Install facing south
B2.2	7	1	MB	Install location ok
B2.2	8	1	AA	Install facing east
B2.2	9	1	HM	1278
B2.2	10	1	AA	Install facing north above the sign reading FORUM
B2.2	11	1	AD	1270 / Location ok!
B2.2	12	1	HS	Install on CMU block wall corner
B2.2	13	1	AA	Installed facing west under conduit
B2.2	14	1	LM	Installed on south/east corner of stairwell structure
B2.2	15	1	HS	Install Facing north on corner

B2.2	16	1	AL	Install facing south
B2.2	17	1	AD	1270 / Location ok!
B2.2	18	1	AA	Installed facing west under conduit
TOTAL		18		

B3 Building ID Large (2 Sides)				
Type	#	Quantity	Message	Notes
B3	1	1	AC	Install on top brick wall right corner
B3	2	1	FH	1258 / Install location ok
B3	3	1	AC	ok!
B3	4	1	AC	1186 /Removal of existing letters will be required
B3	5	1	CC	1210 / ok!
B3	6	1	TB	1226 /
B3	7	1	HS	Install on precast fascia and existing letters to be lowered to cmu block wall
B3	8	1	LL	1187, 1221 / Install location ok
B3	9	1	LL	Install location ok, will need to trim treesOption: B3.2 installed facing west and additional panel facing north centered on top of building
B3	10	1	FH	1255 / Visibility ok, east visibility limited by trees
B3	11	1	LL	Install location ok
B3	12	1	PS	ok!
B3	13	1	PS	Installed on top corner of stairwell instead of corner of building since theres no visibility
B3	14	1	PS	ok!
B3	15	1	HM	1275
TOTAL		15		

B3.2 Building ID Large (Single Panel)				
Type	#	Quantity	Message	Notes
B3.2	1	1	CD	Install on top corner facing east
B3.2	2	1	FH	Installed centered on top of building
B3.2	3	1	PA	Facing uphill
B3.2	4	1	CD	1202 / Install on parapet top corner above fascia
B3.2	5	1	CC	1230 / Install facing west
B3.2	6	1	HS	Installed on white aluminum cladding top corner
B3.2	7	1	TB	B3.2ADDITIONAL Install facing west
B3.2	8	1	TB	1222 / Install on top right corner of elevator structure
B3.2	9	1	HM	

B3.2	10	1	PA	Installed facing east, possible additional panel installed facing south 3 from the corner to evade camera
B3.2	11	1	CC	1210 / ok!
TOTAL		11		

B4 B4 Building ID (Single Panel)

Type	#	Quantity	Building Code	Notes
B4	1	1	GM	1172 / Custom size 37sq Install facing west
B4	2	1	GM	1169 / Custom size 37 sq per side
TOTAL		2		

B5 Building ID (Full Name)

Type	#	Quantity	Message	Notes
B5	1	1	HIGH SCHOOL	Install where existing banner is
B5	2	1		Install where existing letters are
B5	3	1	KINESIOLOGY/HEALTH	Install where existing letters are
B5	4	1	CHILD DEVELOPMENT CENTER	Install where existing letters are
B5	5	1	GYMNASIUM	Install where existing letters are Option: install above on white concrete awning
B5	6	1	ACADEMIC CENTER	Install where existing letters are
B5	7	1	ACADEMIC CENTER	Install where existing letters are
B5	8	1	ACADEMIC CENTER	Install where existing letters are
B5	9	1	CAMPUS CENTER	Install on precast concrete fascia above doors
B5	10	1	APPLIED ARTS	Remove existing letters, patch and paint wall. Install on same location.
B5	11	1	APPLIED ARTS	Install here
B5	12	1	STUDENT SERVICES ANNEX	Install where existing letters are (this is the most suitable location) must relocate tree
B5	13	1	TECHNOLOGY BUSINESS	Install 8 higher from where existing letters are
B5	14	1	TECHNOLOGY BUSINESS	Install here
B5	15	1	HEALTH SCIENCES CENTER	Existing lettering to remain.
B5	16	1	LIFE SCIENCES/MATHEMATICS /COMPUTER SCIENCES	Install above where existing letters are in line with bellyband
B5	17	1	HEALTH SCIENCES CENTER	Install on north facing wall at the same height of "bellyband"
B5	18	1	PHYSICAL SCIENCES	Install on precast/ guardrail base avoiding trees
B5	19	1	LIFE SCIENCES/MATHEMATICS /COMPUTER SCIENCES	Install on bellyband structure (handrail)
B5	20	1	PHYSICAL SCIENCES	Install on precast/ guardrail base to the left on picture.
B5	21	1	LIBRARY/LEARNING RESOURCES	

B5	22	1	LIBRARY	Install here. On precast concrete fascia
B5	23	1	PHYSICAL SCIENCES	Install here
B5	24	1	FOUNTAIN HALL	Install where existing letters are
B5	25	1		Install on elevator structure
B5	26	1	FOUNTAIN HALL	Install where existing letters are
B5	27	1	HUMANITIES/SOCIAL SCIENCES	Install here
B5	28	1	MUSIC	Install here
B5	29	1	FOUNTAIN HALL	Install where existing letters are
B5	30	1	FOUNTAIN HALL	Install where existing letters are
B5	31	1	HUMANITIES/SOCIAL SCIENCES	Install here
B5	32	1	PERFORMING ARTS	Install where existing letters are (limited visibility because of trees Option: install on adjacent wall covering stairs on right wall (great visibility)
B5	33	1	ADMINISTRATION	Replace existing letters
B5	34	1	PERFORMING ARTS	Install on uphill wall past corner from indicated
B5	35	1	ADMINISTRATION	Install here
B5	36	1	ACADEMIC CENTER	Install where existing letters are
B5	37	1	HEALTH SCIENCES CENTER	Install on CMU block wall
TOTAL		37		

B6 EATM Building ID - Ground mounted				
Type	#	Quantity	Message	Notes
B6	1	1	EATM	
TOTAL		1		

B7 EATM Building ID - Wall mounted				
Type	#	Quantity	Message	Notes
B7	1	1	EATM	
TOTAL		1		

EI.1 Entrance ID (Wall Mounted)					
Type	#	Quantity	Building	Message (long)	Notes
EI.1	1	1	FM FACILITIES, MAINTENANCE & OPERATIONS	FACILITIES	
				MAINTENANCE	
				OPERATIONS	
				CUSTODIAL	
				WAREHOUSE	
EI.1	2	1	AD ADMINISTRATION	Student Health Services [Owners to provide list of dept/amenities within]	Install on right side. Remove Career assessment center sign. Patch and paint.

El.1	3	1	AD ADMINISTRATION	Student Health Services [Owners to provide list of dept/amenities within]	Install on right side of entrance.
El.1	4	1	MA MEDIA ARTS	FTVM GR MM	1268 / Location doesnt allow for proper sign placement (see images). Option 1: install on wall to the leftOption 2: freestanding might be better by the softscape area to the left (will need to remove bushes, see images)
El.1	5	1	AL LIFE SCIENCES/MATHEMATICS /COMPUTER SCIENCES	Anthropology Biology Botany Computer Science Zoology	Mount on wall by breezeway
El.1	6	1			Install on wall. Need more information on existing conditions
El.1	7	1	KH KINESIOLOGY/HEALTH	Athletics Office Kinesiology/Health Instructor Offices	ElInstall on right side of wall 1 from the edge
El.1	8	1	CD CHILD DEVELOPMENT CENTER	[owner to provide list of dept/amenities]	Remove existing room sign and relocate to glass, patch and paint wall. Install on same location as room sign.
El.1	9	1	GM GYMNASIUM	[owner to provide list of dept/amenities]	Install in between 2 sliding door entrances , since each entrance leads to different areas This white column is only 13 wide
El.1	10	1	GM GYMNASIUM	[owner to provide list of dept/amenities]	Install in between 2 sliding door entrances , since each entrance leads to different areas This white column is only 13 wide
El.1	11	1	AC ACADEMIC CENTER	[owner to provide list of dept/amenities]	FREESTANDING Install on planter to the right side of stairs (at the beginning of stairs)Additionally install WALL MOUNTED version at left side of entrance where existing sign resides
El.1	12	1			Install on side of entry door.
El.1	13	1	AC ACADEMIC CENTER	[owner to provide list of dept/amenities]	Install on LEVEL 2 right side of entrance
El.1	14	1	AC ACADEMIC CENTER	[owner to provide list of dept/amenities]	
El.1	15	1	AA APPLIED ARTS	[owner to provide list of dept/amenities]	Install on left side of existing bulletin board
El.1	16	1	CC CAMPUS CENTER	[owners to provide list of dept/amenities within] Associated Students, Bookstore, Campus Center Conference Room, Food Court,	Install on left wall (north) of entry alcove
El.1	17	1	SA STUDENT SERVICES ANNEX	[owners to provide list of dept/amenities within]	Install on left side of entrance
El.1	18	1	HS HEALTH SCIENCES CENTER	Anatomy Lab Biotechnology EMT Microbiology Lab Nuclear Medicine Nursing Nutrition Optical Technology	Install on wall to right side of walkway

				Radiation Technology	
El.1	19	1	TB TECHNOLOGY BUSINESS	[TBC] Business Computer Aided Drafting CAD Gaming Math	Install on wall to the right (stairwell)
El.1	20	1	HS HEALTH SCIENCES CENTER	Anatomy Lab Biotechnology EMT Microbiology Lab Nuclear Medicine Nursing Nutrition Optical Technology Radiation Technology	Mount on corrugated metal corner by the breezeway
El.1	21	1	LL LIBRARY/LEARNING RESOURCES	[owners to provide list of dept/amenities within]	Install on right side of entrance
El.1	22	1	PS PHYSICAL SCIENCES	Chemistry Engineering ENCS Physics	Mount on breezeway wall to the right of door on this walkway intersection.
El.1	23	1	AL LIFE SCIENCES/MATHEMATICS /COMPUTER SCIENCES	Anthropology Biology Botany Computer Science Zoology	Install on right side of entrance. Left of fire alarm pull
El.1	24	1	HM HUMANITIES/SOCIAL SCIENCES	[TBC] Behavioral and Social Sciences Division Office Criminal Justice Economics History Philosophy	Location better suitable for freestanding sign since classroom entrances are all around building facing walkways

				Political Science Psychology Sociology	
El.1	25	1	HM HUMANITIES/SOCIAL SCIENCES	Behavioral and Social Sciences Division Office Criminal Justice Economics History Philosophy Political Science Psychology Sociology	Locate on wall by breezeway entry. West side
El.1	26	1	FOUNTAIN HALL	[TBC] Student Services Vice President	Install on right side of entrance, existing trash bins to be moved to right side
El.1	27	1	PS PHYSICAL SCIENCES	Chemistry Engineering ENCS Physics	Install to right side of entrance. Remove existing room sign and relocate to glass. Patch and repaint. Mount new sign on same location as existing room sign
El.1	28	1	MU MUSIC	[Owner to provide list of departments/amenities]	1290 / Install on left side of entrance
El.1	29	1	PA PERFORMING ARTS	Communication Studies Dance Theater	FREESTANDING W INFO
El.1	30	1	EATM EXOTIC ANIMAL TRAINING & MANAGEMENT	[TBC] Lath House Nutrition Storage	Mount on glass on the left corner of auditorium on top level

EI.1	31	1	FOUNTAIN HALL	[TBC]	Install to right side of entrance
				Student Services	
				Vice President	
				Admissions	
				CalWorks	
				Career Transfer Center	
				Counseling	
				EOPS	
				Financial Aid	
				International Students	
				Outreach	
				Scholarships	
				Student Business Office	
				Records	
EI.1	32	1	HM HUMANITIES/SOCIAL SCIENCES	Behavioral and Social Sciences Division Office	Mount on outside of stairwell wall below building letters. Trim or cut bush for visibility.
				Criminal Justice	
				Economics	
				History	
				Philosophy	
				Political Science	
				Psychology	
				Sociology	
EI.1	33	1	PA PERFORMING ARTS	Communication Studies	Install on wall on right side of entry
				Dance	
				Theater	
EI.1	34	1	AD ADMINISTRATION	Student Health Services [Owners to provide list of dept/amenities within]	Install in place of existing bulletin board & move bulletin board to the left. Patch and paint before mounting.
				Student Health Services [Owners to provide list of dept/amenities within]	
EI.1	36	1	MA MEDIA ARTS	[TBC]	Locate on south wall.
				FTVM	
				GR	
				MM	
EI.1	37	1			Wall mount right of entry door
EI.1	38	1	AC ACADEMIC CENTER	[owner to provide list of dept/amenities]	Install on LEVEL 3 right side of entrance

EI.1	39	1	HS HEALTH SCIENCES CENTER	Anatomy Lab	Install on wall to left side of breezeway
				Biotechnology	
				EMT	
				Microbiology Lab	
				Nuclear Medicine	
				Nursing	
				Nutrition	
				Optical Technology	
				Radiation Technology	
EI.1	40	1	HS HEALTH SCIENCES CENTER	Anatomy Lab	Mount on wall corner by the breezeway
				Biotechnology	
				EMT	
				Microbiology Lab	
				Nuclear Medicine	
				Nursing	
				Nutrition	
				Optical Technology	
				Radiation Technology	
EI.1	41	1	LL LIBRARY/LEARNING RESOURCES	[owners to provide list of dept/amenities within]	Install on left side of entrance
EI.1	42	1	HM HUMANITIES/SOCIAL SCIENCES	Behavioral and Social Sciences Division Office	Locate on wall by breezeway entry. West side
				Criminal Justice	
				Economics	
				History	
				Philosophy	
				Political Science	
				Psychology	
				Sociology	
EI.1	43	1	PS PHYSICAL SCIENCES	Chemistry	Install to side of entrance. Need more information about existing conditions.
				Engineering	
				ENCS	
				Physics	
EI.1	44	1	EATM EXOTIC ANIMAL TRAINING & MANAGEMENT	[TBC]	Mount wall next to stairwell (and elevator machine room) on bottom level
				Lath House	
				Nutrition	
				Storage	
TOTAL		44			

EI.3 Entrance ID (Wall Mounted - No Directory)					
Type	#	Quantity	Building	Message (long)	Notes
EI.3	1	1	HI	HIGH SCHOOL TR 3	
EI.3	2	1	OB	OBSERVATORY	
EI.3	3	1	PD	CAMPUS POLICE	Install on right column on the entrance
EI.3	4	1	GM	GYMNASIUM	Location not suitable for install (remove)
EI.3	5	1	FS	FIELD HOUSE	
TOTAL		5			
TB.1 Accessible Route ID (Pylon)					
Type	#	Quantity	Message (long)	Message	Notes
TB.1	1	1		> Upper Campus Access /<Lower Campus Access	Install on top left side of entrance
TB.1	2	1		West Campus	1296 / Install location ok!
				^ EATM	
TB.1	3	1		^ Upper Campus Access [sym]	Install 1 to the left side of the beginning of accessible path
				^ Lower Campus Access [sym]	
TB.1	4	1			Install on right side of existing light pole install facing north with arrow pointing east (left)
TB.1	5	1			Install on planter area at the beginning of accessible ramp to the adjacent building entrance Arrow to be pointing south (right)
TB.1	6	1			
TB.1	7	1			
TB.1	8	1			
TB.1	9	1			
TB.1	10	1			
TOTAL		10			
TB.2 Accessible Route ID (Post)					
Type	#	Quantity	Message	Message	Notes
TB.2	1	1	Upper Lower Access	< [sym]	Install on sofscape in front of manhole facing driveway North side (arrow pointing right)South side (arrow pointing left)East side (arrow pointing forward)West side (arrow pointing left)
				> [sym]	
				^ > [sym]	
				< ^ [sym]	
TB.2	2	1	Upper Lower Access	^ > [sym]	Install on planter area between stairs and brown light post. Existing irrigation system on site should not pose as an obstruction.Sign to be have arrow pointing east (one sided)
				< ^ [sym]	
				< [sym]	
				> [sym]	

TB.2	3	1	Upper Lower Access	< [sym]	Install on sofscape 1 beyond walkway North side (arrow pointing left)East side (arrow pointing forward)West side (arrow pointing right)
				> [sym]	
				^ > [sym]	
				< ^ [sym]	
TB.2	4	1	Upper Lower Access	^ > [sym]	Install in corner right in front of trash can, about 6 away from fenceNorth side (arrow pointing left)East side (arrow pointing left)West side (arrow pointing right)
				^ < [sym]	
				< [sym]	
				> [sym]	
TB.2	5	1	Upper Lower Access	< > [sym]	(arrow on two sides)Install to the right side of the beginning of accessible pathSide facing north (arrow pointing forward)Side facing west (arrow pointing south/left)
				^ [sym]	
				< > [sym]	
				^ [sym]	
TB.2	6	1		^ Lower Campus Access [sym]	Install on sofscape 10 I front of existing light pole(Arrows pointing east, west, south)
				Upper Campus Access [sym]	
TB.2	7	1	Upper Lower Access	^ > [sym]	S / Sign not needed here See additional
				< ^ [sym]	
				< [sym]	
				> [sym]	
TB.2	8	1			
TB.2	9	1			
TB.2	10	1			
TB.2	11	1			
TB.2	12	1			
TB.2	13	1			
TB.2	14	1			
TB.2	15	1			
TB.2	16	1			
TB.2	17	1			
TB.2	18	1			
TB.2	19	1			
TB.2	20	1			
TB.2	21	1			
TB.2	22	1			
TB.2	23	1			
TB.2	24	1			
TB.2	25	1			
TB.2	26	1			
TB.2	27	1			

TOTAL		27		
M	Banner			
Type	#	Quantity	Message (long)	Notes
M	1	1		This Street is not suitable to install banners, 0% visibility on this sidewalk due to trees.
M	2	1		No existing posts on both sides to install banners (only 2 posts centered in medium)Medium length is 250x28
M	3	1		No existing posts on both sides to install banners (only 2 posts centered in medium)Medium length is 250x28
M	4	1		No existing posts on both sides to install banners (only 2 posts centered in medium)Medium length is 250x28
M	5	1		No existing posts on both sides to install banners (only 2 posts centered in medium)Medium length is 250x28
M	6	1		No existing posts on both sides to install banners (only 2 posts centered in medium)Medium length is 250x28
M	7	1		No existing posts on both sides to install banners (only 2 posts centered in medium)Medium length is 250x28
M	8	1		
M	9	1		
M	10	1		
TOTAL		10		
DW	Accessible Route ID (Wall Mounted)			
Type	#	Quantity	Notes	
DW	1	1	DW Install on wall straight across from elevator exit, with arrow pointing south (right)	
DW	2	1		
DW	3	1		
TOTAL		3		
DC	Accessible Route ID (Blade)			
Type	#	Quantity	Notes	
DC	1	1	Install on corner wall located south west.arrow pointing west (right)	
DC	2	1	on level 3Install to the right top side of elevator entrance	
TOTAL		2		
TM. 1	Accessible Map			
Type	#	Quantity	Notes	

TM. 1	1	1
TM. 1	2	1
TOTAL		2