



# Ventura County Community College District

## PURCHASING DEPARTMENT

---

DATE: February 11, 2020  
TO: All Bidders  
FROM: Lisa, Purchasing Specialist  
SUBJECT: Addendum 1 – Bid 603 Moorpark College Kinesiology Outdoor Classroom Phase 2

*This addendum is hereby made part of the Contract Documents to the same extent as though it was originally included therein and takes precedence over the original documents. The outdated pages must be replaced with any updated and/or changed pages when submitting your bid. **Acknowledge receipt of all addenda on the Bid Form.***

### Document Revisions:

1. Please see new plans with Rev. Date 2.11.2020. Per Job-walk meeting 9:00 a.m., 2.11.2020

### Question and Answer:

#### Question and Answer:

Q. Can a C contractor use a D contractor as a sub-contractor?

A. Yes, bidder will need to complete the appropriate Sub-contractor form within the bid packet.

Q. Explain Applying materials to Storm Drain Cover.

A. The turf and resilient flooring will be permanently adhered to the metal cover. Materials must be cut cleanly around the edge to allow for future potential removal to access the existing storm drain. A hole through the material that matches the existing metal cover that allows placing a pole or a hook into the hole to facilitate removal of the cover.

Q. Do we install materials behind the existing cargo containers?

A. Do not install resilient flooring on the narrow, bare (approximately 2" wide) concrete strip facing the outer edge of the concrete pad. See revised plans.

End of Addendum 1



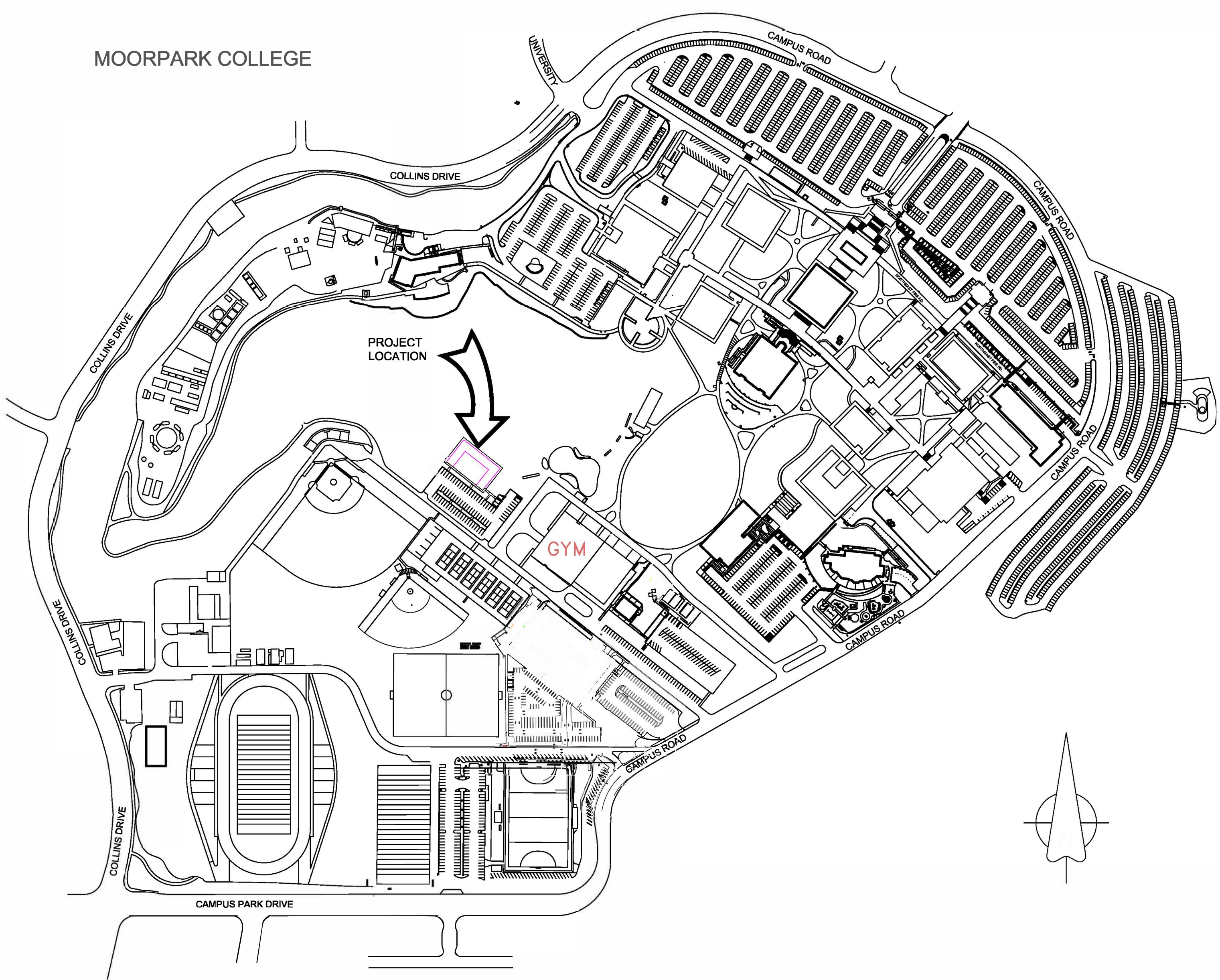
# KINESIOLOGY OUTDOOR CLASSROOM PHASE 2

SYNTHETIC TURF & ATHLETIC FLOORING

MOORPARK COLLEGE  
7075 CAMPUS ROAD  
MOORPARK, CA 93021  
CONSTRUCTION DOCUMENTS

FEBRUARY 11, 2020

SHEET INDEX		
No.	NAME	DESCRIPTION
1	G-0.00	COVER SHEET
2	G-1.00	SITE PLAN
3	G-2.00	DIMENSION PLAN



VICINITY MAP



**MOORPARK COLLEGE**  
  
7075 CAMPUS ROAD  
MOORPARK, CA 93021  
TEL: 805.378.1454  
FAX: 805.378.1593

FACILITIES,  
MAINTENANCE  
and OPERATIONS  
  
John Sinutko  
Director  
  
7075 CAMPUS ROAD  
MOORPARK, CA 93021  
TEL: 805.378.1454  
FAX: 805.378.1593

## KINESIOLOGY OUTDOOR CLASSROOM PHASE 2

REVISIONS:

Plan Rev. Date 2.11.2020

PLAN NUMBER:

**BID No. 603**

DRAWING TITLE:

**SURFACING PLAN**

SCALE: N/A  
24x36D

PLOT DATE:  
1.16.2020

SHEET NO:  
**G-0.00**

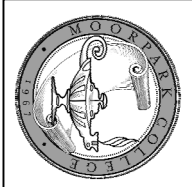


MOORPARK  
COLLEGE

7075 CAMPUS ROAD  
MOORPARK, CA 93021  
TEL: 805.378.1454  
FAX: 805.378.1593

FACILITIES  
MAINTENANCE  
and OPERATIONS

John Sinutko  
Director  
7075 CAMPUS ROAD  
MOORPARK, CA 93021  
TEL: 805.378.1454  
FAX: 805.378.1593



KINESIOLOGY  
OUTDOOR  
CLASSROOM  
PHASE 2

REVISIONS

Plan Rev. Date 2.11.2020

PLAN NUMBER

BID No. 603

DRAWING TITLE

SURFACING PLAN

SCALE

N/A

PLOT DATE

24X36d

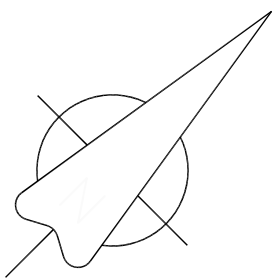
SHEET NO.

1.16.2020

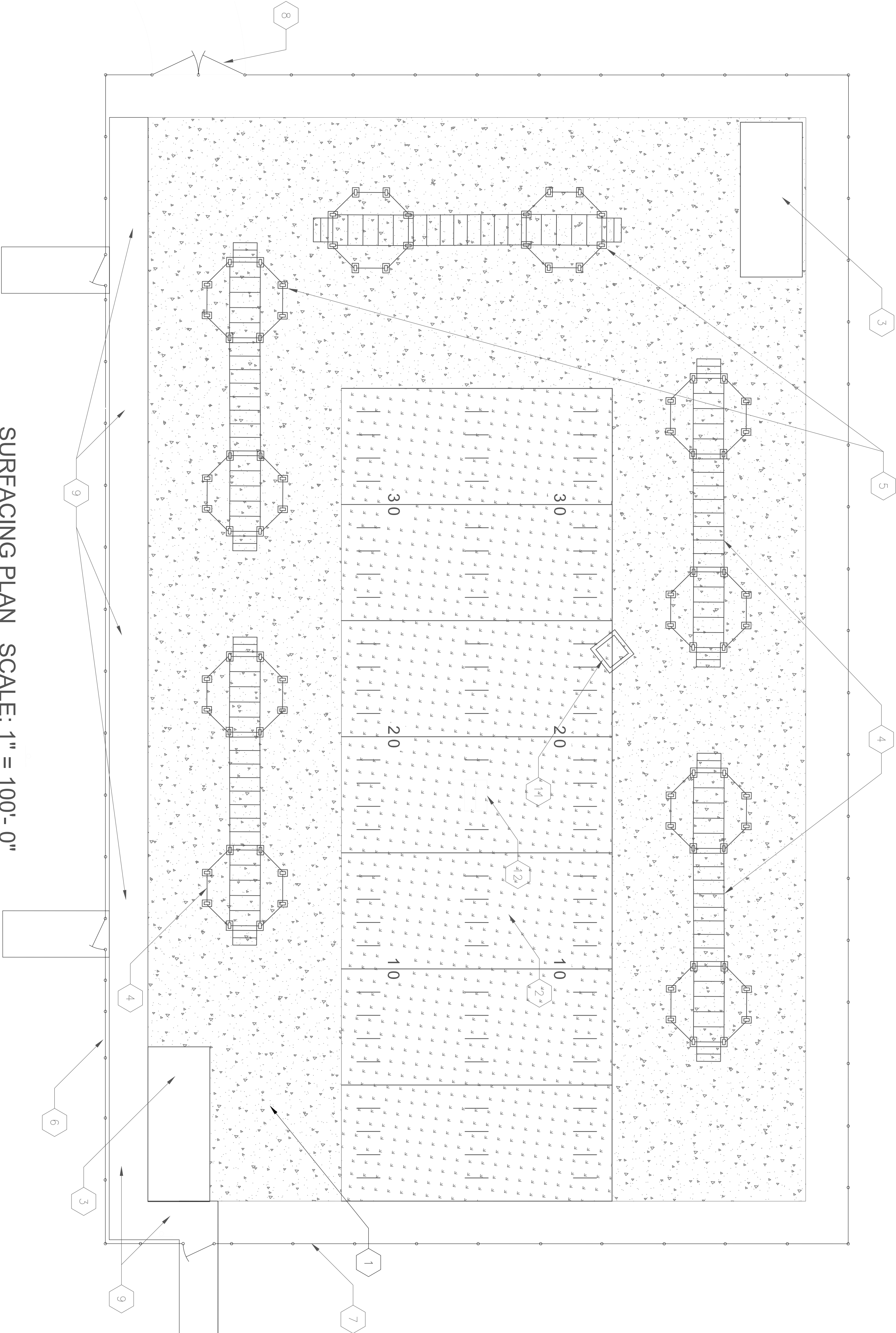
G-1.00

SURFACING NOTES:

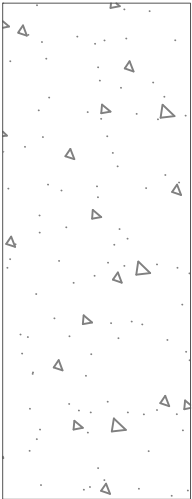
1. Provide and install Resilient Athletic Flooring Tiles made from recycled rubber on existing concrete slab. Ecote Everlast Ultra Tile was used as basis of design. See Specification Section 09 65 66 for specific information, product requirements, installation requirements, and warranty requirements. All portions of the rubber matting not in direct contact with the synthetic turf or raised concrete walkways require reducer strips to be provided and installed.
2. Provide and install Synthetic Recreational Sport Turf on existing concrete slab. Surface shall include a two fiber system specifically designed to resist abrasion, including a polyethylene monofilament and a polypropylene thatch, not less than 1 3/4" in height. Base mat shall be made of a blend of 100% recycled SBR (styrene butadiene rubber) and polyurethane. Total thickness of product shall be 1 3/4". Surface America RecSport Turf was used as a basis of design. See Specification Section 09 62 53 for specific information, product requirements, installation requirements, and warranty requirements. Include integrated 6" wide white lines made of the same type material as the balance of the field, located as shown. Include full-length lines at the beginning, ends and both sides of the turf, and at 5 yard increments as shown. Include 3, 6" wide, 3 foot-long white stripes at 36" intervals, as shown. Include 18" high numbering indicating the 10 yard, 20 yard, and 30 yard markings in white lettering made from the same turf material as the striping.
3. Existing Cornex storage container - protect in place. Install Resilient Athletic Flooring Tile to fit tightly against the storage container. See Addendum 1
4. Existing octagonal exercise equipment. Install around and under equipment to fit tightly against all points in contact with the concrete.
5. Future octagonal exercise equipment.
6. Existing C.L. fencing. Protect in place.
7. Existing C.L. fencing with attached wind screen. Protect in place.
8. Existing delivery access gate. Protect in place.
9. Existing concrete walk. 1' higher than adjacent reinforced concrete slab.
10. Existing 6" reinforced concrete slab. Sloped to drain @ 1%.
11. Existing cast iron storm drain cover. Synthetic Turf and Resilient Athletic Tile to be permanently affixed to cover. See Addendum 1
12. Moorpark College Logo. 48" wide, proportionally high, constructed from Synthetic Turf, in three colors, Black, Blue, and White to match Moorpark College College colors.



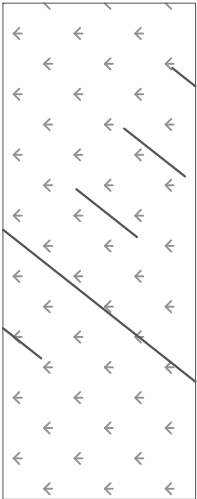
SURFACING PLAN SCALE: 1" = 100'-0"



SURFACING LEGEND:

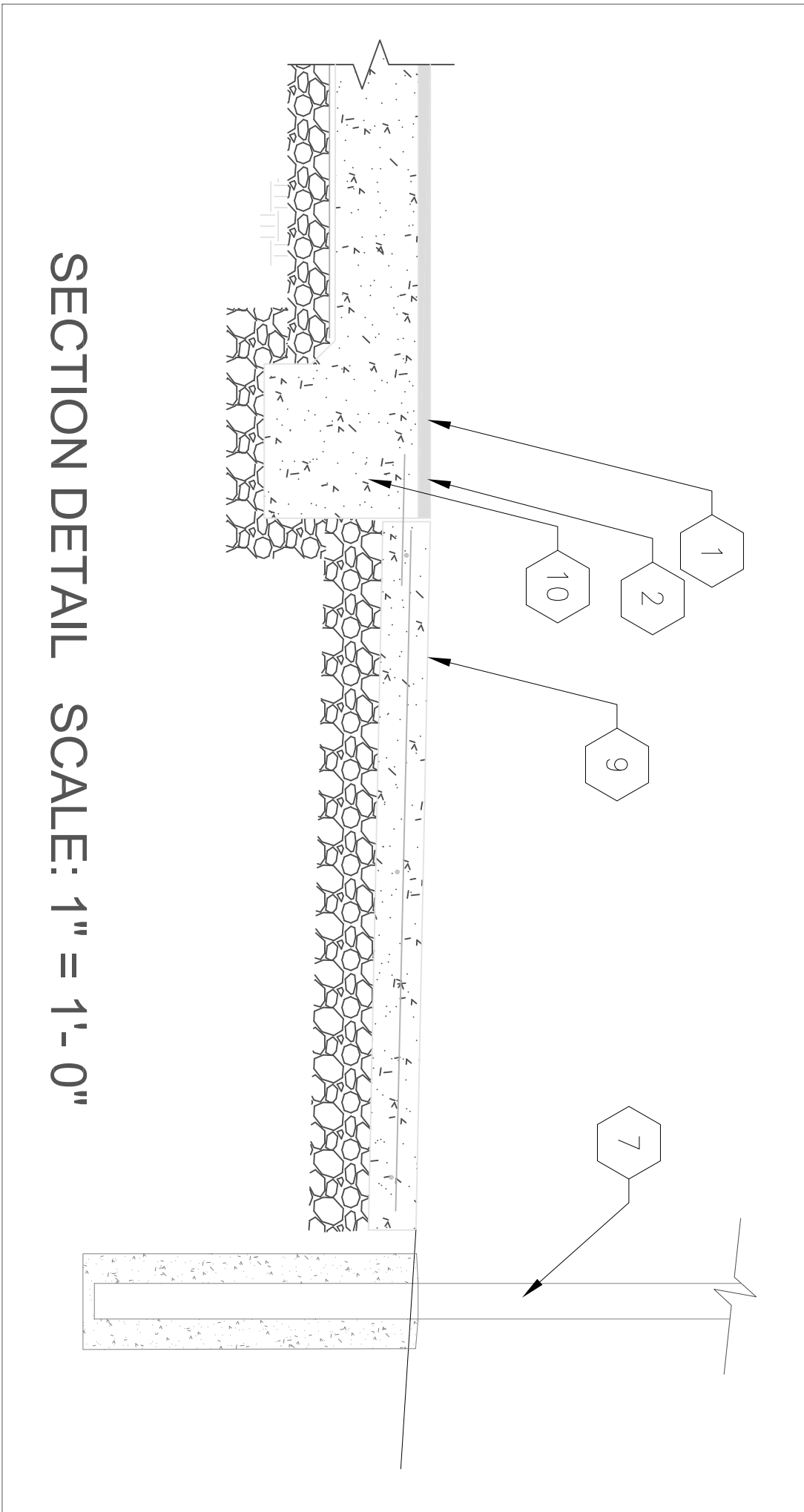


NEW Resilient Athletic Floor Tile



NEW Synthetic Turf Surface

SECTION DETAIL SCALE: 1" = 1'-0"

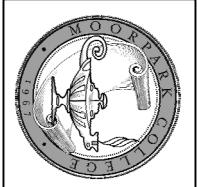


MOORPARK  
COLLEGE

7075 CAMPUS ROAD  
MOORPARK, CA 93021  
TEL: 805.378.1454  
FAX: 805.378.1593

FACILITIES  
MAINTENANCE  
and OPERATIONS

John Sinutko  
Director  
7075 CAMPUS ROAD  
MOORPARK, CA 93021  
TEL: 805.378.1454  
FAX: 805.378.1593



KINESIOLOGY  
OUTDOOR  
CLASSROOM  
PHASE 2

REVISIONS

Plan Rev. Date 2.11.2020

PLAN NUMBER

BID No. 603

DRAWING TITLE

SURFACING PLAN

SCALE

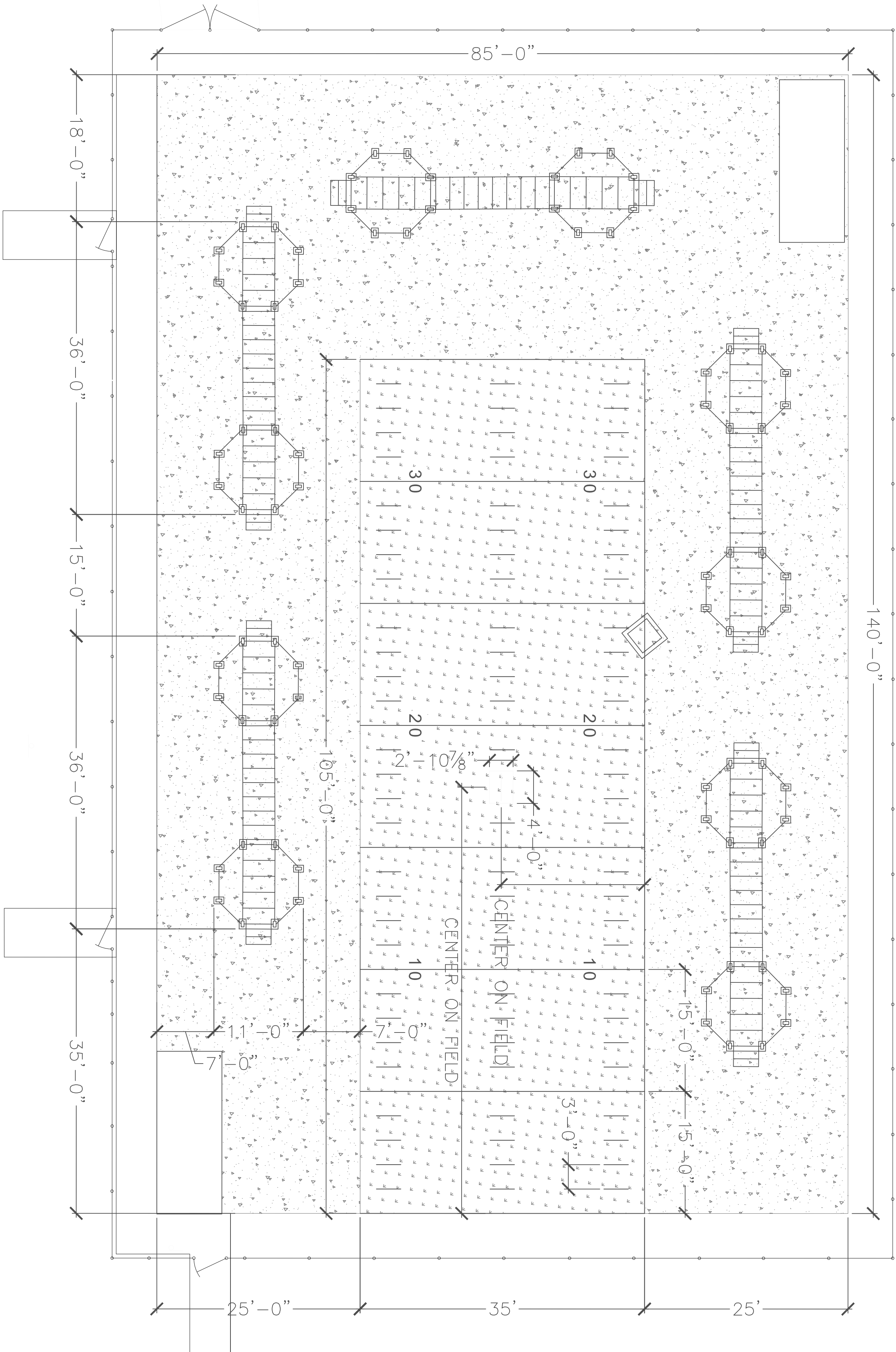
N/A  
24x36d

PLOT DATE

1.16.2020

SHEET NO

G-2.00



DIMENSION PLAN SCALE: 1" = 100'-0"

GENERAL NOTE:

1. Contractor to field verify all dimensions prior to beginning work.
2. Exercise apparatus shown on plan not a part of this contract.