



Ventura County Community College District

PURCHASING DEPARTMENT

DATE: July 16, 2021
TO: All Bidders
FROM: Jo Nell Miller, Purchasing Specialist
SUBJECT: Addendum 2 – Bid 622 Moorpark College Softball Backstop and Fencing Project

*This addendum is hereby made part of the Contract Documents to the same extent as though it was originally included therein and takes precedence over the original documents. The outdated pages must be replaced with any updated and/or changed pages when submitting your bid. **Acknowledge receipt of all addenda on the Bid Form.***

The bid opening remains on **Wednesday, July 21, 2021**. Bids must be received no later than **3:00 p.m.** at 761 E Daily Drive, Suite 200, Camarillo, CA 93010. Properly mark the outside of the exterior envelope on your submitted bid with the Bid Number and Name according to the requirements stated in the bid packet directions.

It is the responsibility of the Bidder to verify that their proposal has been received by the VCCCD Purchasing Department prior to the opening date. Verification of receipt can be made through the listed Purchasing Specialist.

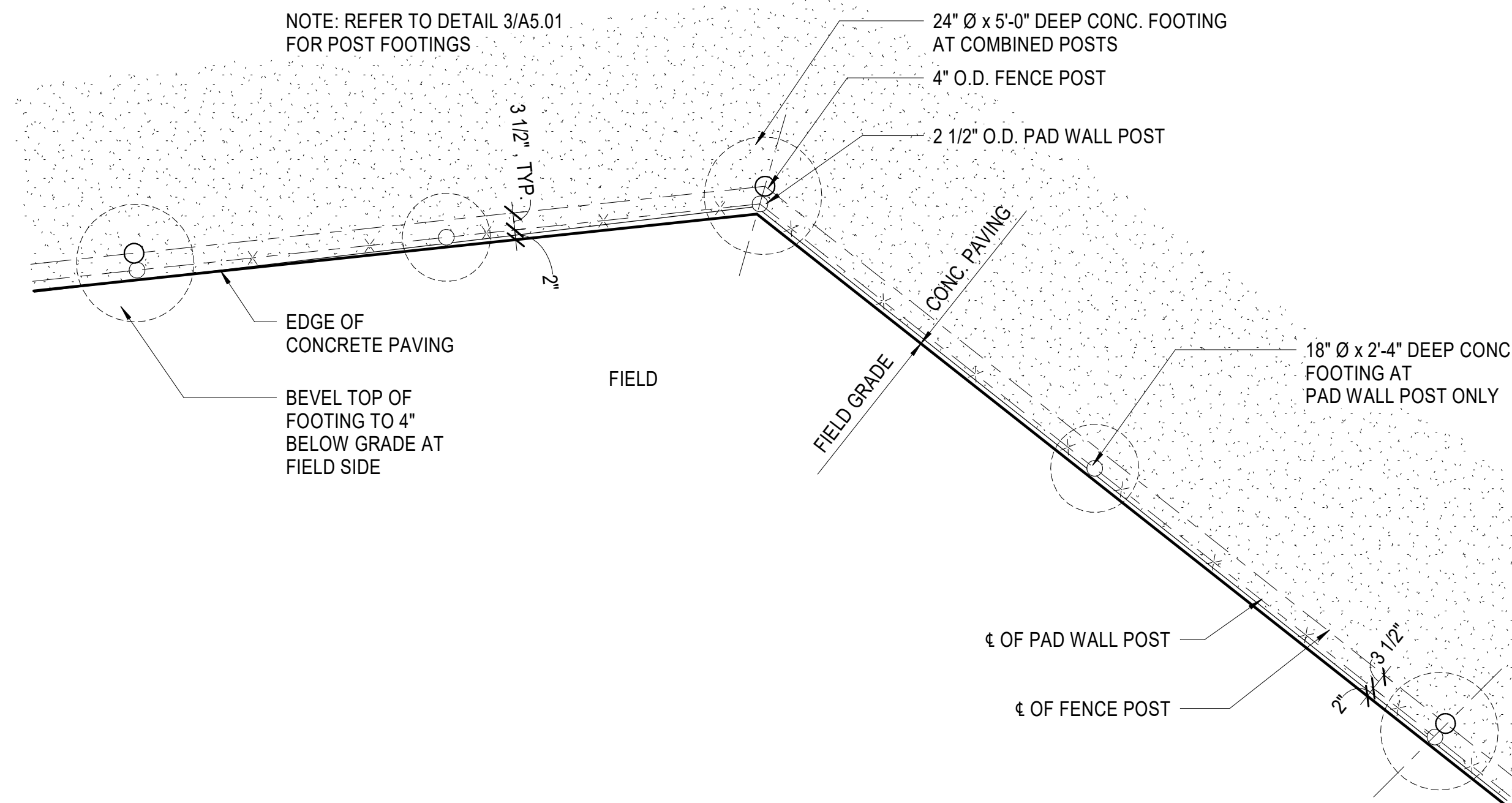
Replace Drawing A103 and A501 as attached and refer to Drinking Fountain and Filter Cut sheets attached.

1. Provide ¾" cold water supply line and shut off valve from existing Water Point of Connection as shown on Drawing A103.
2. Provide drywell and 1" drain line to Drinking Fountain as shown on Drawings A103 and A501.
3. Provide two 1" PVC conduits underground from below existing electrical panel at First Base Dugout to location on Drawing 103.

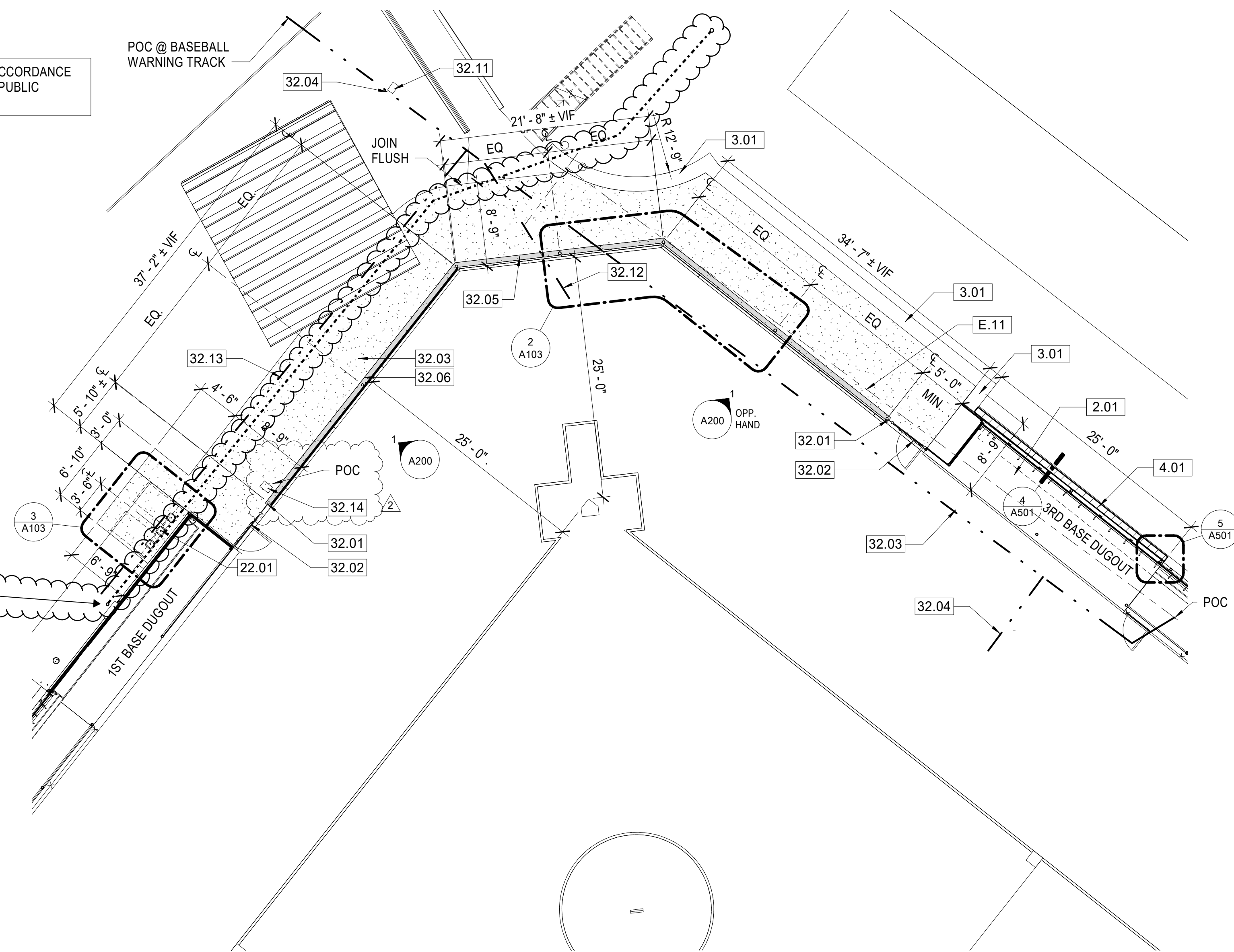
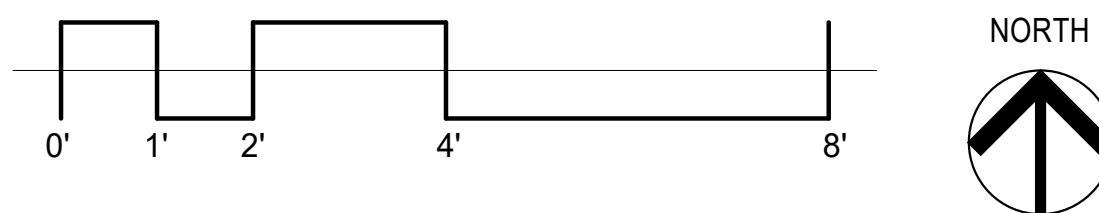
The deadline for questions was **Tuesday, July 13, 2021, at 3:00 p.m.** No further questions will be accepted

End of Section

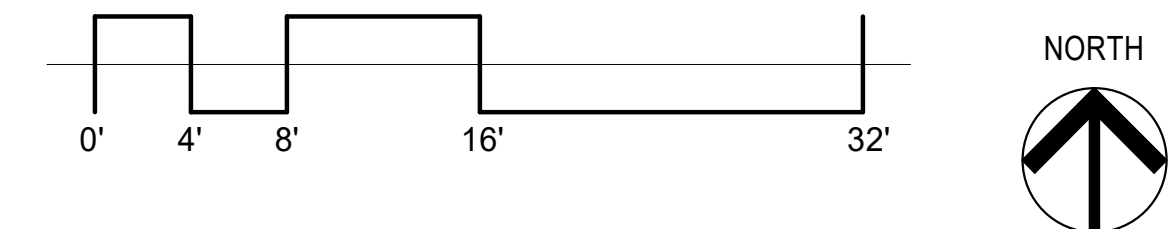
NOTE: ALL IRRIGATION WORK SHALL BE IN ACCORDANCE WITH THE STANDARD SPECIFICATIONS FOR PUBLIC WORKS CONSTRUCTION, 2021 EDITION.



2 ENLARGED PARTIAL BACKSTOP PLAN
1/2" = 1'-0"

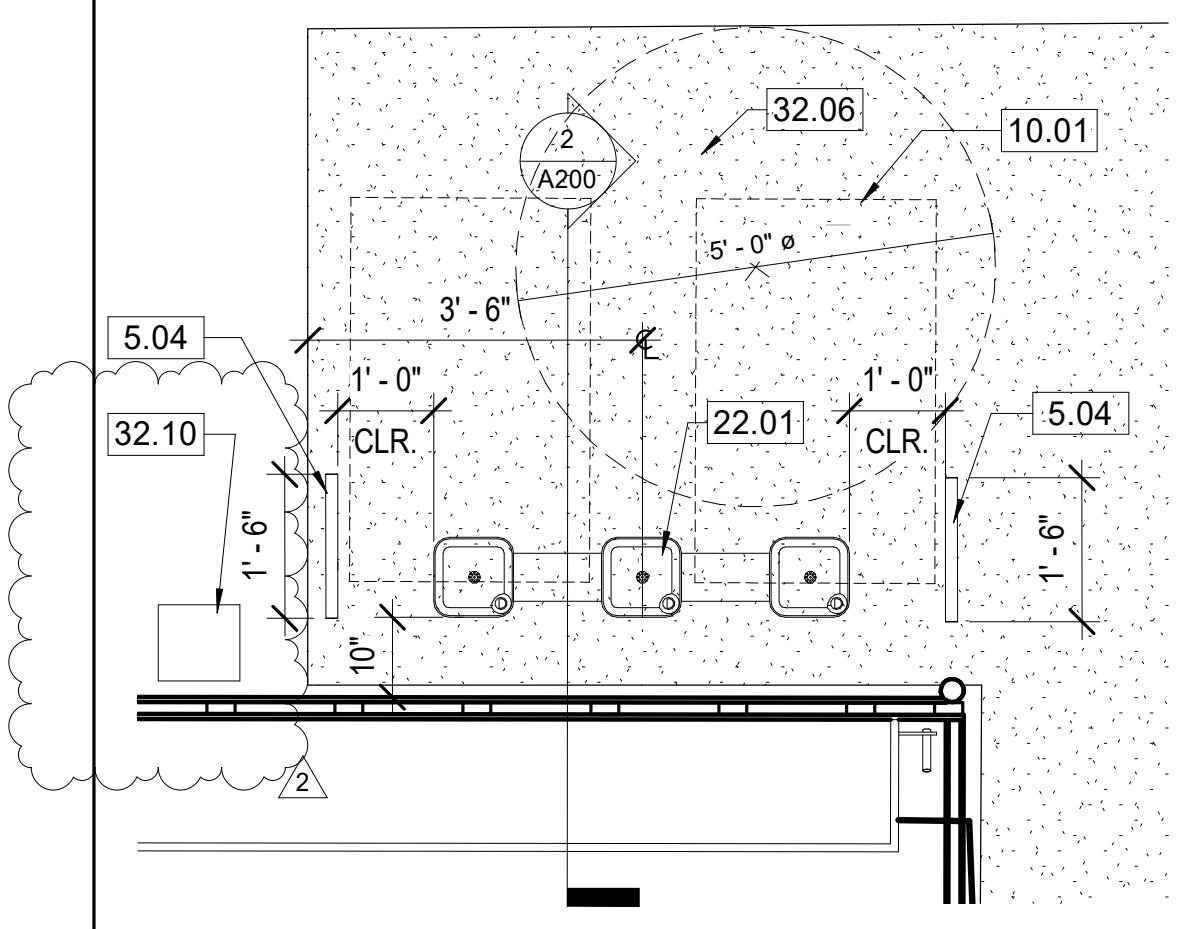


1 FLOOR PLAN
1/8" = 1'-0"



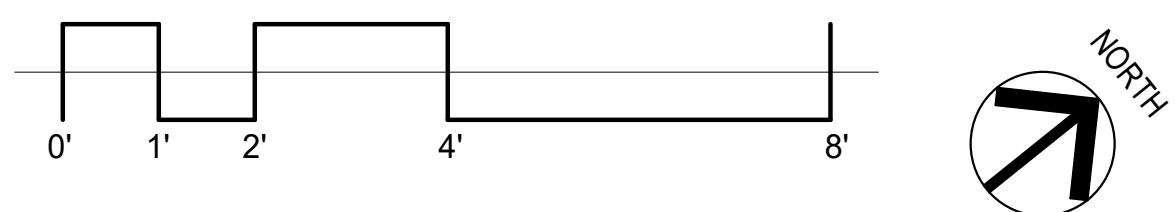
KEYNOTE LEGEND

- 3.01 (N) 8" WIDE BY 10" HIGH CONCRETE CURB WITH CONTINUOUS #4 REBAR @ TOP AND BOTTOM, SEE CIVIL DWGS.
- 4.01 (N) 8" C.M.U. WALL, SEE CIVIL DWGS.
- 5.04 DRINKING FOUNTAIN WING GUARD, SEE DETAIL 4/A2.00
- 10.01 30" x 48" CLEAR SPACE
- 22.01 FREESTANDING HI-LO DRINKING FOUNTAIN WITH HYDRATION STATION AND FILTER
- 32.01 CHAIN-LINK FENCE FRAME, WELDED TO MBS SYSTEM POST
- 32.02 3'-6" CHAIN-LINK GATE
- 32.03 4" C900 CLASS 235 PVC PIPE WITH DUCTILE IRON FITTING
- 32.04 14 GA. DIRECT BURY SOLID CORE WIRE FOR IRRIGATION BOX 4" DEEP, CONNECT TO (3) 1" SCHEDULE 40
- 32.05 BACKSTOP SYSTEM W/ 4'-0" HIGH FRAME & REMOVABLE PADS
- 32.06 4" THICK CONCRETE SIDEWALK W/ #4 REBAR @ 18" O.C. EACH WAY
- 32.10 DRYWELL FOR DRINKING FOUNTAIN DRAINAGE, SEE 6/A501
- 32.11 RELOCATE (E) VALVE AND QUICK COUPLER. LEAVE 2" PVC STUB FOR FUTURE
- 32.12 ADD (6) 2" PVC SLEEVES UNDER WALKWAY AND BACK STOP INTO INFIELD
- 32.13 PROVIDE (1) 2" PVC SLEEVE UNDER CONC. WALKWAY
- 32.14 PROVIDE YARD BOX @ POINT OF CONNECTION FOR 3/4" COPPER WATER LINE FOR DRINKING FOUNTAIN
- E.11 (E) 4" ACP



DRINKING FOUNTAIN: DRINKING FOUNTAIN SHALL BE HAWS MODEL 3612 WITH MODEL 6425 IN LINE FILTER OR EQUAL. PROVIDE OWNER WITH THREE ADDITIONAL FILTERS

3 ENLARGED DF PLAN
1/2" = 1'-0"



AMADOR WHITTLE ARCHITECTS, INC.

28328 AGOURA ROAD, SUITE 203
AGOURA HILLS, CA 91301
(805) 530-3938, (818) 674-0071

**MOORPARK COLLEGE SOFTBALL FIELD
NEW BACKSTOP AND FENCING**

7075 CAMPUS ROAD
MOORPARK, CALIFORNIA 93021

NOTE: THIS SHEET IS ONE OF A SET OF DOCUMENTS WHICH INCLUDES, BUT IS NOT LIMITED TO, DRAWINGS AND SPECIFICATIONS ADDRESSING ALL TRADES. GENERAL CONTRACTOR IS RESPONSIBLE FOR FURNISHING ALL BIDDERS WITH A FULL SET OF CONSTRUCTION DOCUMENTS. ALL BIDDERS SHALL REVIEW THE ENTIRE SET OF DOCUMENTS. IF THERE IS A CONFLICT BETWEEN DISCIPLINES, THE MOST EXPENSIVE OPTION SHALL BE BID.

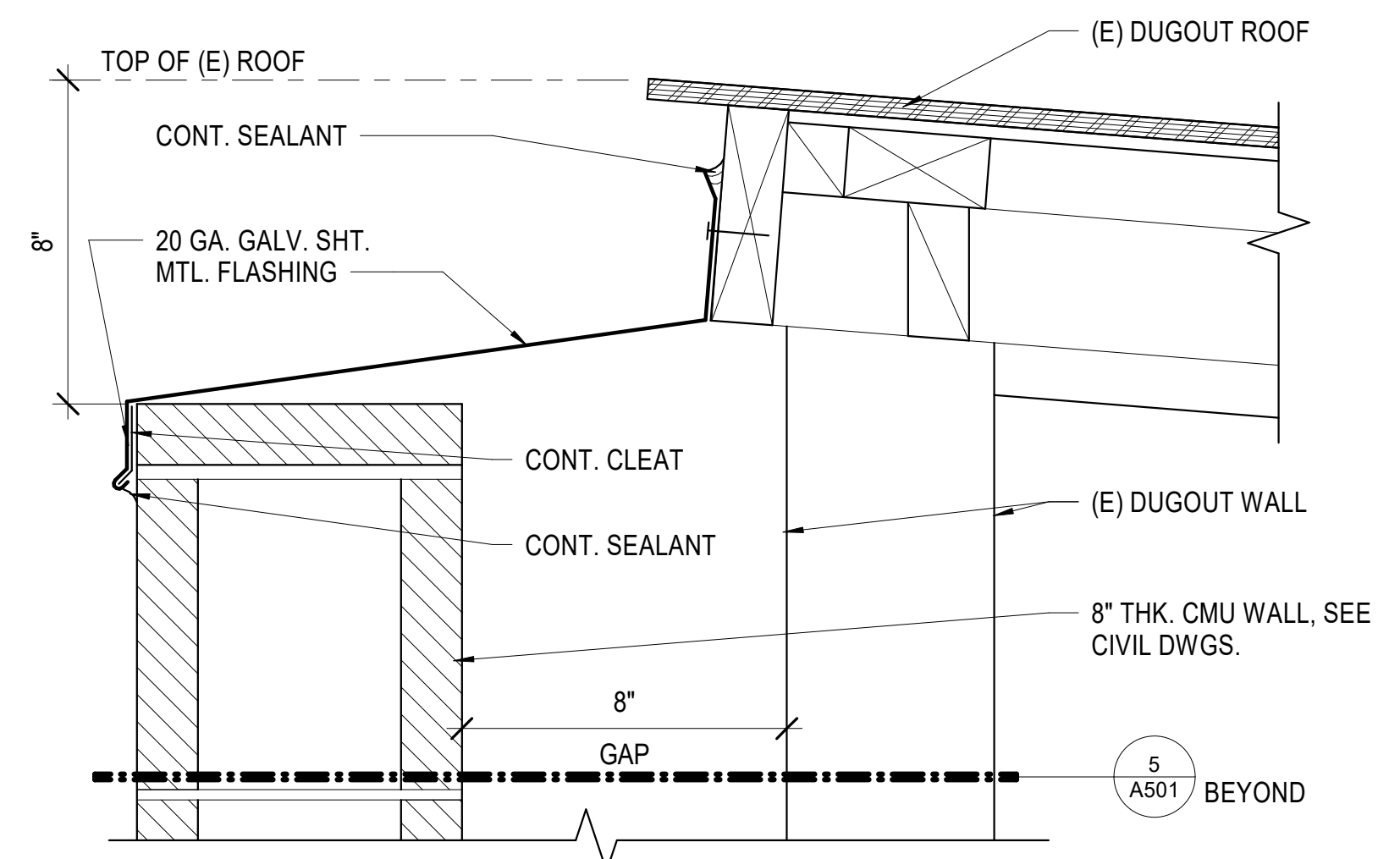
REVISIONS	2	7/16/21	ADDENDUM 2	DATE:	7/16/21
				DRAWN:	Author
				CHECK:	Checker
				JOB NO:	020-MPC-033

ENLARGED PLANS

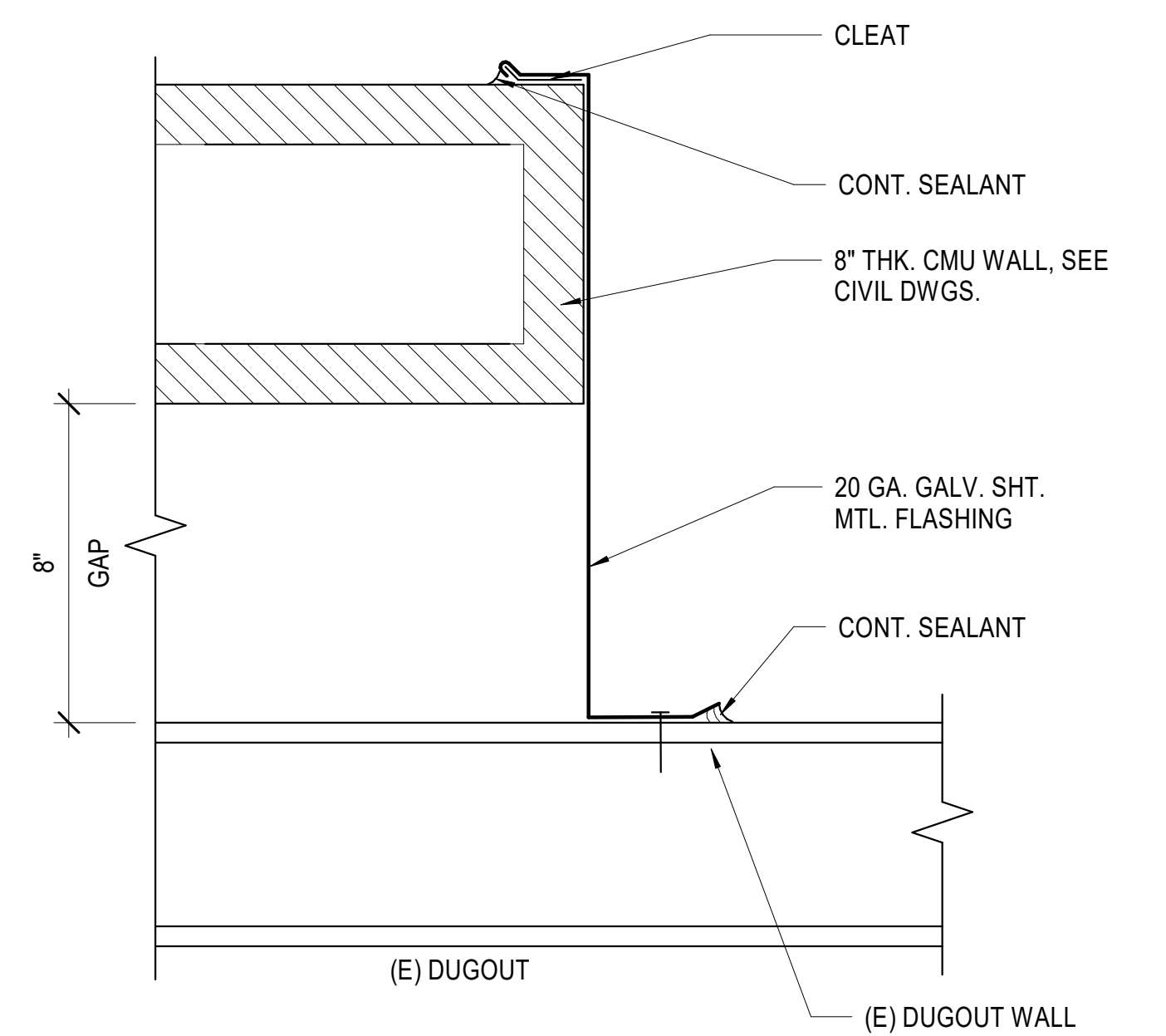
IF THIS SHEET IS NOT 34" X 22", IT IS NOT FULL SIZE, SCALE DRAWINGS ACCORDINGLY

A103

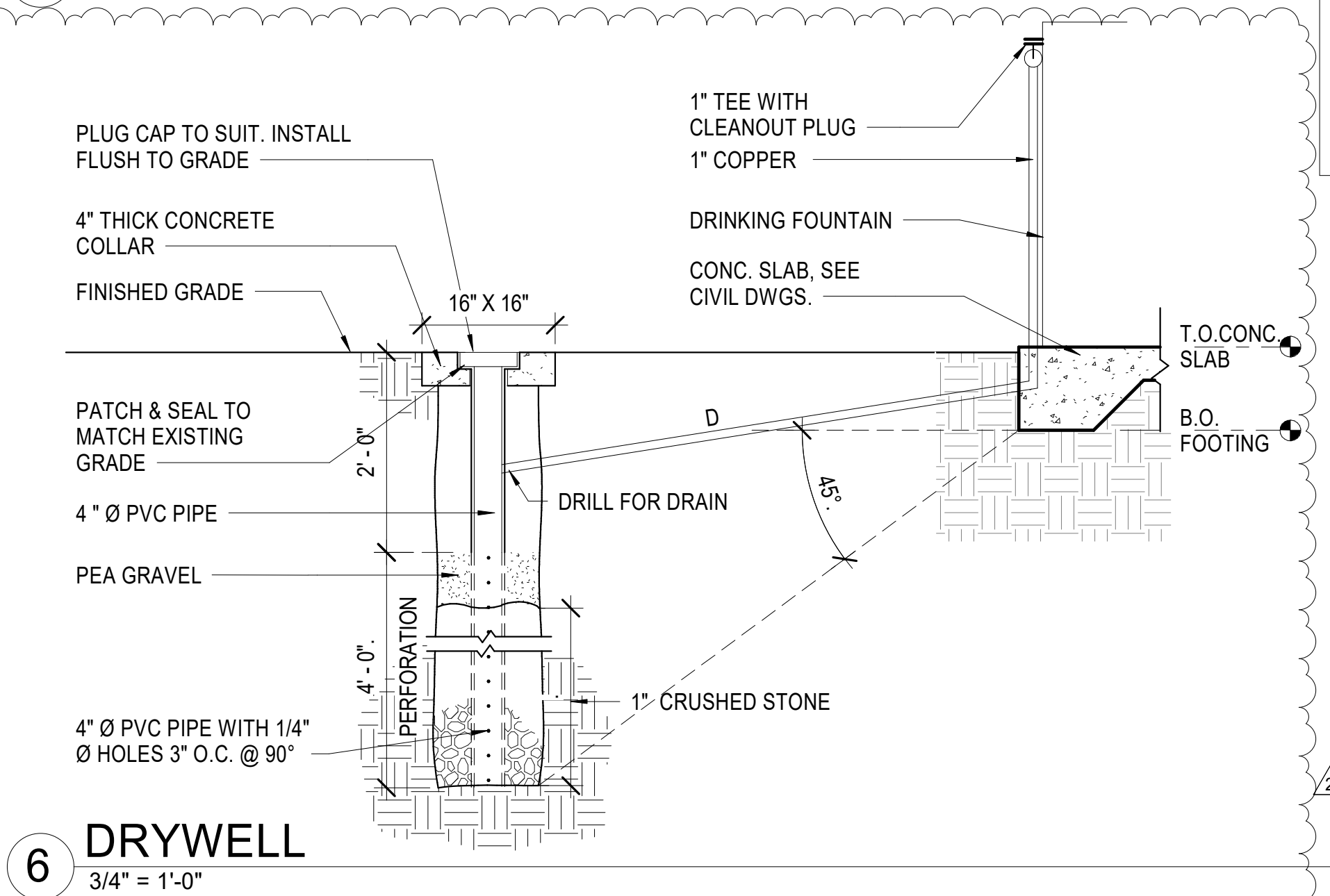
OF



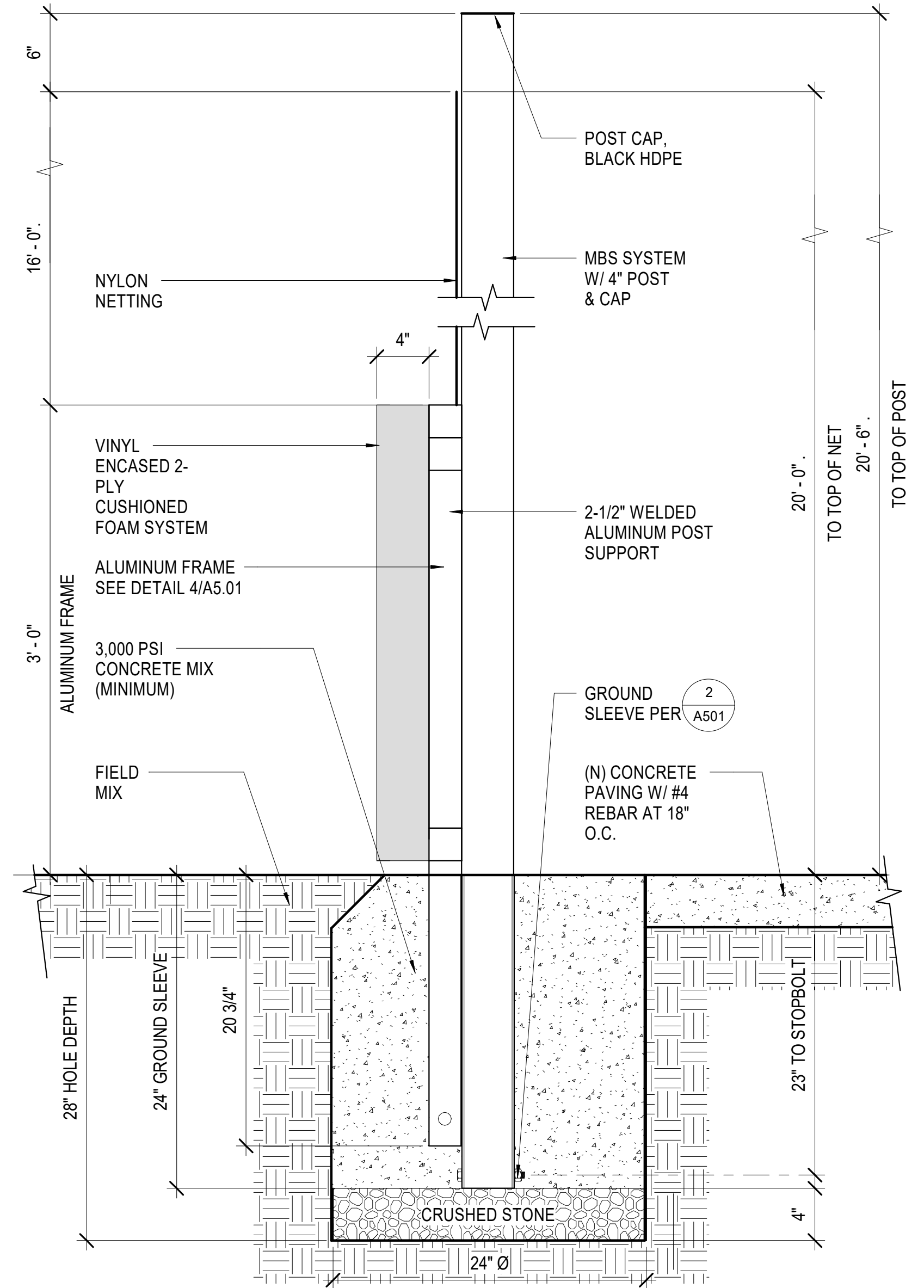
4 TOP OF WALL AT 3RD BASE DUGOUT
3" = 1'-0"



5 WALL AT 3RD BASE DUGOUT - PLAN
3" = 1'-0"



6 DRYWELL
3/4" = 1'-0"

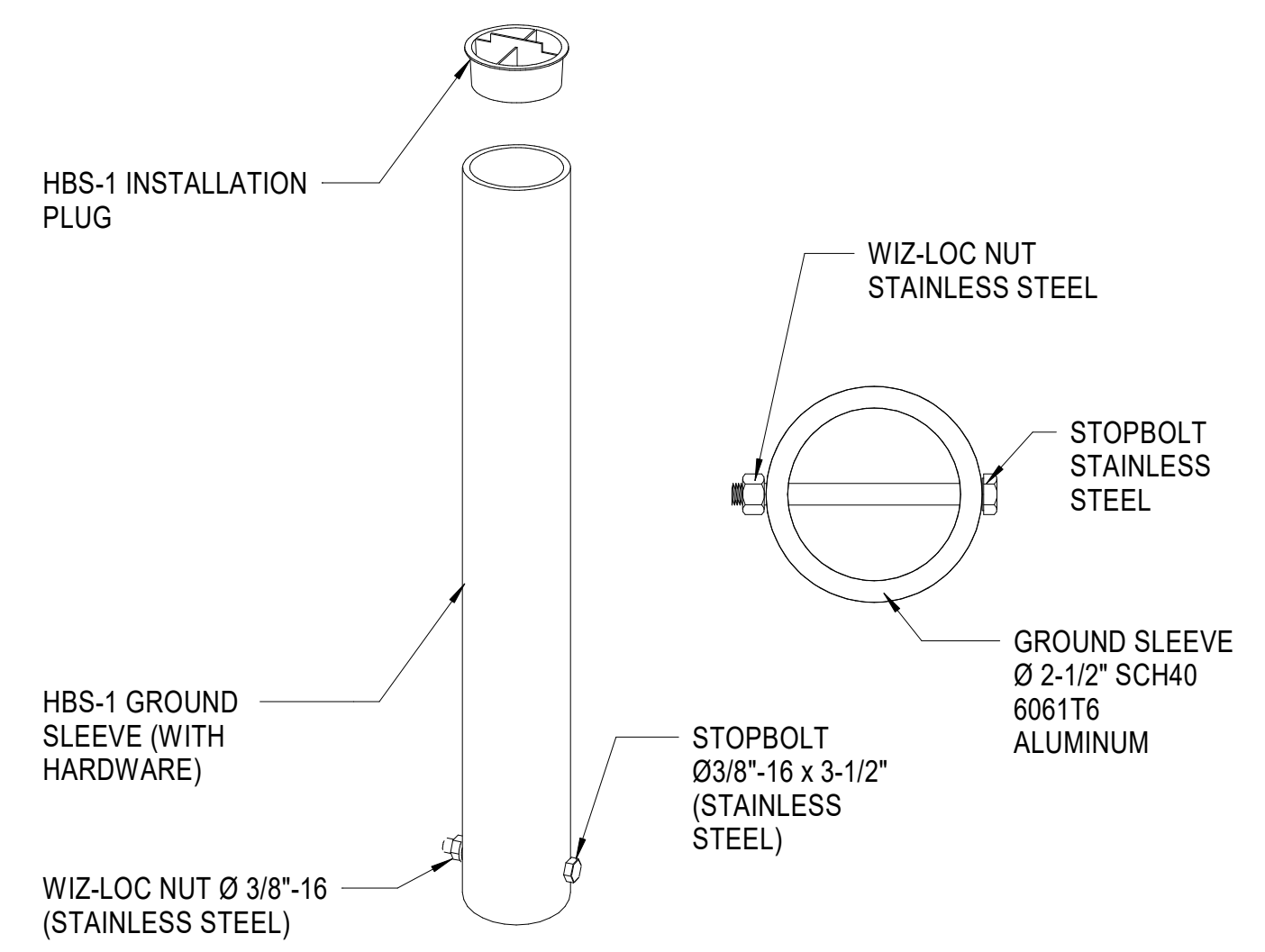


3 FENCE SECTION
1 1/2" = 1'-0"

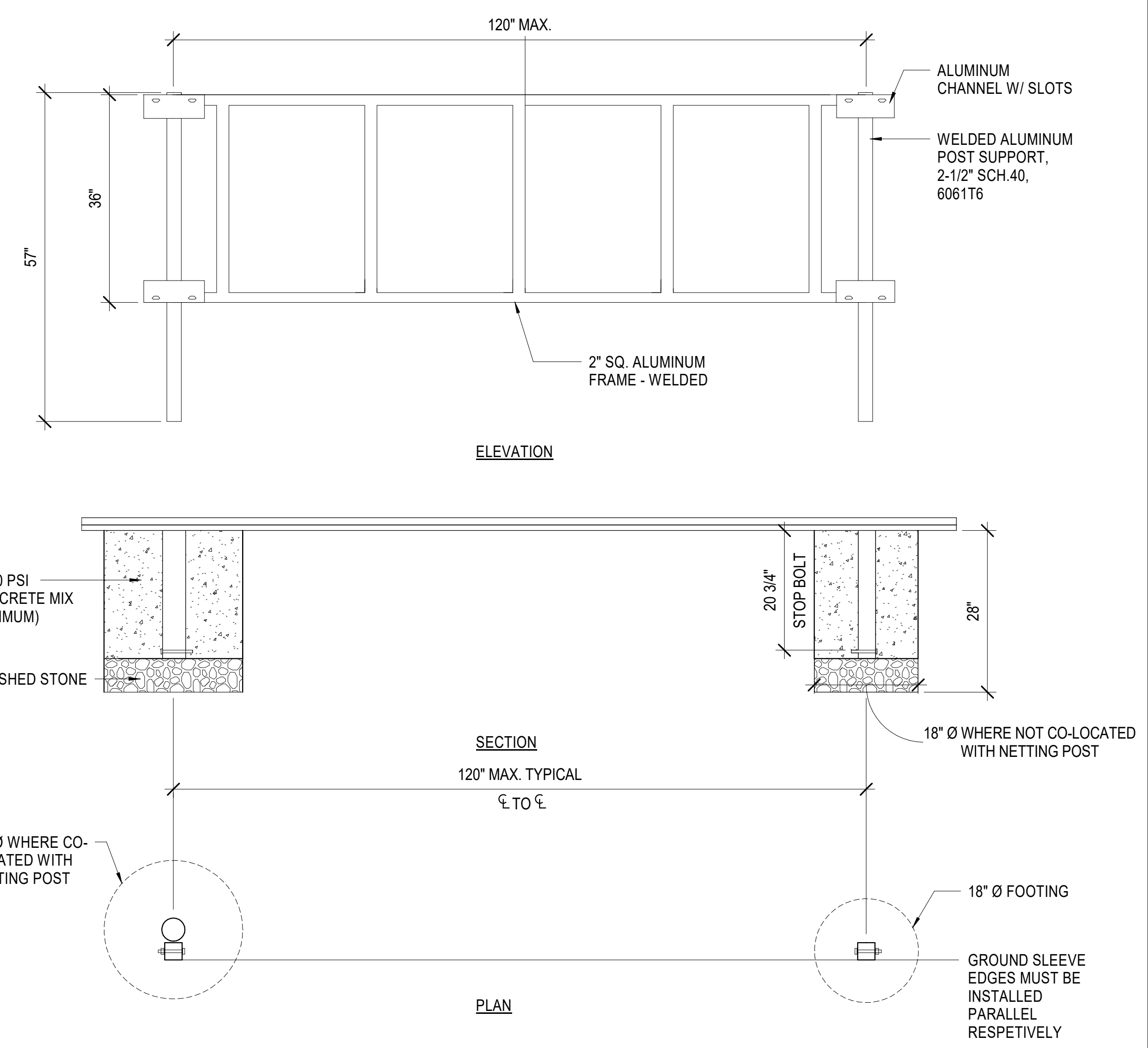
MANUFACTURED ITEMS NOTE:

20' NET FENCING AND 4" PADDED BACKSTOP WALL SHOWN ARE BASED ON PRODUCTS BY ALUMINUM ATHLETIC EQUIPMENT COMPANY(AAE) AND REPRESENT THE DESIGN INTENT. OTHER MANUFACTURERS AND/ OR CUSTOM BUILT SYSTEMS MEETING THE DESIGN INTENT AND LEVEL OF QUALITY WILL BE ACCEPTED.

1 BACKSTOP WALL
3/4" = 1'-0"



2 HBS-1 GROUND SLEEVE
3" = 1'-0"



<p>AMADOR WHITTLE ARCHITECTS, INC.</p>		<p>28328 AGOURA ROAD, SUITE 203 AGOURA HILLS, CA 91301 (805) 530-3938, (818) 874-0071</p>	
<p>MOORPARK COLLEGE SOFTBALL FIELD NEW BACKSTOP AND FENCING</p>			
<p>7075 CAMPUS ROAD MOORPARK, CALIFORNIA 93021</p>			
<p>NOTE: THIS SHEET IS ONE OF A SET OF DOCUMENTS WHICH INCLUDES, BUT IS NOT LIMITED TO, DRAWINGS AND SPECIFICATIONS ADDRESSING ALL TRADES. GENERAL CONTRACTOR IS RESPONSIBLE FOR FURNISHING ALL BIDDERS WITH A FULL SET OF CONSTRUCTION DOCUMENTS. ALL BIDDERS SHALL REVIEW THE ENTIRE SET OF DOCUMENTS. IF THERE IS A CONFLICT BETWEEN DISCIPLINES, THE MOST EXPENSIVE OPTION SHALL BE BID.</p>			
<p>REVISIONS</p>	<p>7/16/21</p>	<p>ADDENDUM 2</p>	<p>DATE: 7/16/21</p>
			<p>DRAWN: SAN</p>
			<p>CHECK: WJA</p>
			<p>JOB NO: 020-MPC-033</p>
<p>DETAILS</p>			<p>A501</p>
<p>IF THIS SHEET IS NOT 34" X 22", IT IS NOT FULL SIZE, SCALE DRAWINGS ACCORDINGLY</p>			



model 3612

ADA Stainless Steel Bottle Filler and Drinking Fountain

FEATURES & BENEFITS

ADA COMPLIANCE

ADA-compliant bottle filling station and dual-height high-low drinking fountain required for wheel chair use, and for the standing person.

FRONT APPROACH

Face all three water stations frontward and the overall footprint needed is only 73 inches wide, saving 33% of the hard scape required for access compliance. This also allows the fountain to be placed with its back to within 8 inches of a wall or a fence.

BOTTLE FILLER

The ADA-compliant open design bottle filling station offers a 17" high bottle area, and open sides making this push button operated bottle filling station more accessible to users.

STAINLESS STEEL VALVES

The push-button activated valves offers the only all stainless steel valve body that is machined out of solid bar stock, is fully serviceable through the front of the push button assembly offering access to the water control cartridge and integral water supply strainer, and with front access to the water stream height adjustment for easy maintenance without having to remove the valve. Operating pressure range of 30 to 90 psi (2.1 to 6.2 bar).

BUBBLER HEAD

Polished chrome plated brass bubbler head with integral 5/8" dia. threaded shank for vandal resistant strength, and top-down access for nozzle replacement or water line service, with .45 gpm flow rate.

CONSTRUCTION

Heavy-duty stainless steel with silver powder-coated color finish, and stainless-steel drinking fountain bowls. Modular construction allows for easy replacement or rearrangement of drinking fountain bowls and bottle filler modules.

DRAIN CLEAN-OUT

Top-down access to the drain allows the fountain to be cleaned without taking the unit apart, good for outdoor settings with drain-cloggings and or leaves.

OPTIONS

Pet Fountain: Model 3670, dog bowl attachment for 3600 series pedestal fountains.

Hose Bib: Model 3660, lockable hose bib attachment for 3600 series pedestal fountains.

Installation Aid: Model MTG.3600, mounting guide for 3600 series pedestal fountains.

Freeze-Resistant Option: Model 3612FR, ADA stainless steel freeze-resistant bottle filler and dual fountain.

For more information, visit www.hawsc.com or call (888) 640-4297.



SPECIFICATIONS

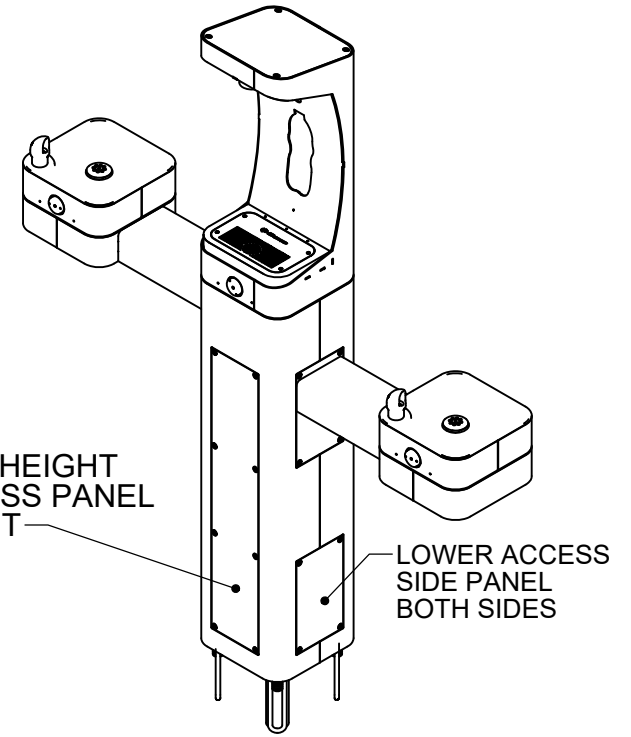
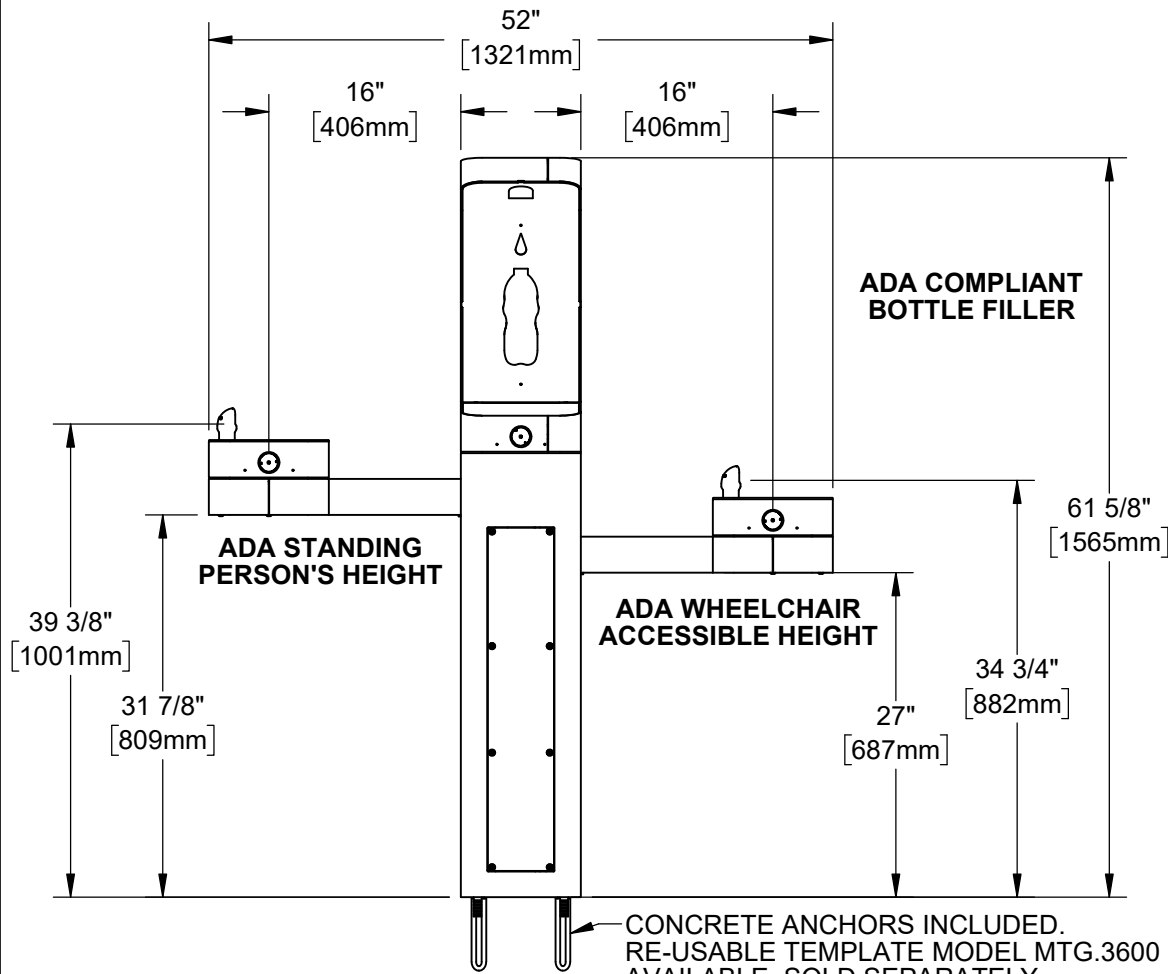
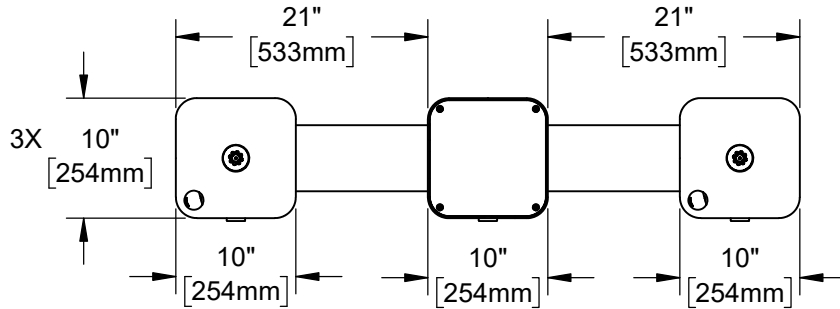
Model 3612 outdoor, ADA-compliant pedestal mounted bottle filler and high-low drinking fountain shall include a heavy-duty stainless steel pedestal with matte silver powder-coating, push-button operated stainless steel valves with front-accessible cartridge and flow adjustment, polished chrome-plated brass vandal-resistant shielded bubbler heads with integral 5/8" dia. threaded shank and top-down access to renewable nozzles, large-opening bottle filler with quick-fill 1 gpm flow rate, 100% lead-free waterways, polished chrome-plated vandal-resistant waste strainers with top-down clean-out access to the drain, vandal-resistant access plates, integral mounting feet, and 1-1/2" slip waste

APPLICATIONS

The 3612 offers a solution for the changing needs of outdoor settings as well as outdoor wheelchair access, appealing to all users through accessibility and safety. This outdoor fountain is ideal in areas such as parks, schools, and other outdoor areas where hydration facilities are needed. Model meets all current Federal Regulations for the disabled including those in the Americans with Disabilities Act, and complies with Prop 65. Certified by CSA to NSF/ANSI 61, section 9 and NSF/ANSI 372; and was evaluated to be compliant to US and Canada Plumbing Codes including Uniform Plumbing Code (UPC), International Plumbing Code (IPC) and National Plumbing Code of Canada (NPC).



NOTES:
 1. WHEN INSTALLING THIS UNIT, LOCAL, STATE, OR FEDERAL CODES SHOULD BE ADHERED TO. INSTALL A TRAP IN THE WASTE LINE AND A SCREWDRIVER STOP IN THE SUPPLY LINE IF REQUIRED.



HAWS MODEL 3612 OR MODEL 3612FR IS FULLY COMPLIANT WITH THE FEDERAL 2010 AMERICANS WITH DISABILITIES ACT (ADA) ACCESSIBILITY REQUIREMENTS WHEN INSTALLED AS SHOWN HERE AND WHEN INSTALLED WITH PROPER CLEARANCES AND ACCESS. LOCATE THE PEDESTAL BASE WITH AT LEAST 8" OF CLEAR UNOBSTRUCTED HARDSCAPE BEHIND THE PEDESTAL. IT IS THE RESPONSIBILITY OF THE INSTALLER TO ADHERE TO LOCAL, STATE, AND FEDERAL CODES WHEN INSTALLING THIS UNIT. DISTANCE TO SURROUNDING OBJECTS, APPROACH SURFACES, ETC. SHOULD BE CONSIDERED.

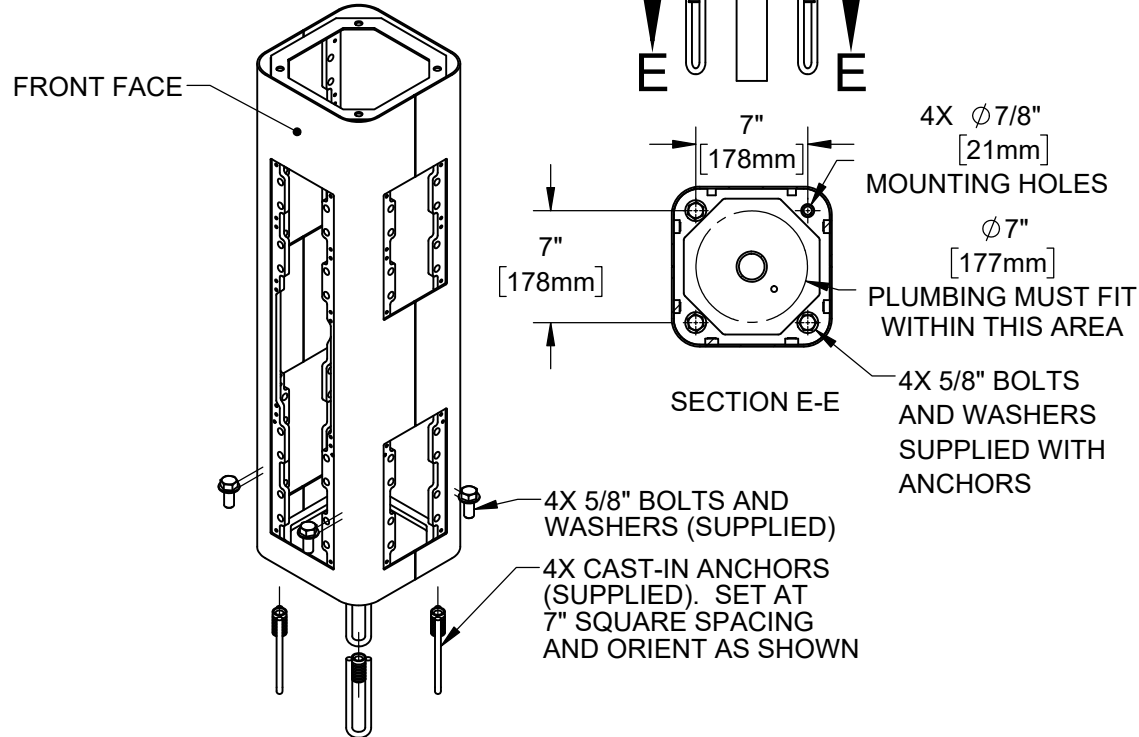
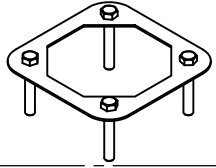


1455 KLEPPE LANE
 SPARKS, NEVADA 89431
 (775) 359-4712 FAX (775) 359-7424
 E-MAIL: HAWS@HAWSO.COM
 WEBSITE: WWW.HAWSO.COM

ECN: 5652	REV. ECN: 5652	BY: DP	MODEL(S)	PART NUMBER
DRAWN: DHP	DATE: 6/11/20	CHKD: FV	3612 / 3612FR	0580001172.D
APPROVED: FV	DATE: 03/18/21	SCALE: 1:24	DRAWING TYPE: INSTALLATION	REVISION
				1
				SHEET 1 OF 7

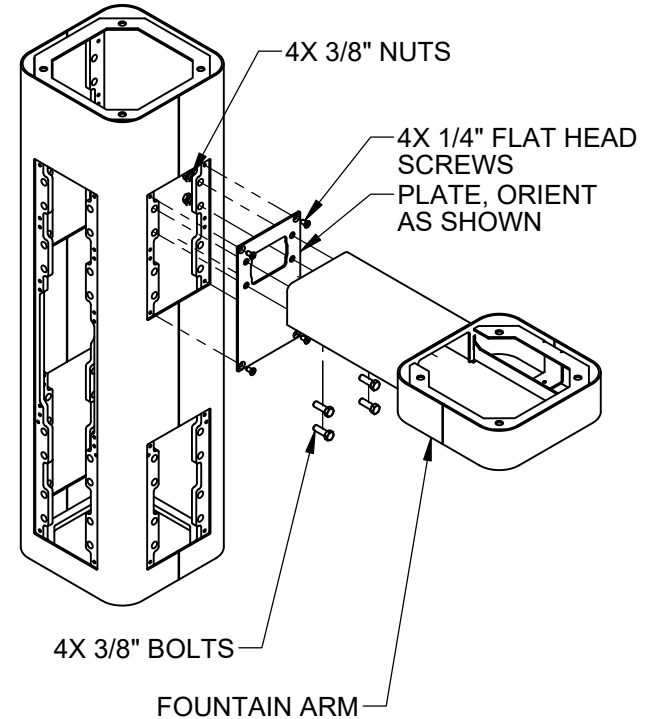
INSTALLATION INSTRUCTIONS

MODEL MTG.3600
(OPTIONAL)
TEMPLATE FOR
SPACING ANCHORS
DURING CONCRETE
POUR



STEP 1

MOUNT PEDESTAL TO CONCRETE SLAB IN DESIRED ORIENTATION. SLAB TO BE 30" MINIMUM SQUARE AND 6" MINIMUM THICK (BY OTHERS). PLUMBING CAST IN CONCRETE MUST FIT IN 7" DIAMETER AREA CENTERED UNDER PEDESTAL LOCATION. FOR 3612FR MODEL, SEE REQUIRED BURY VALVE (NOT SUPPLIED) INSTALLATION REQUIREMENTS ON SHEET 6.



STEP 2

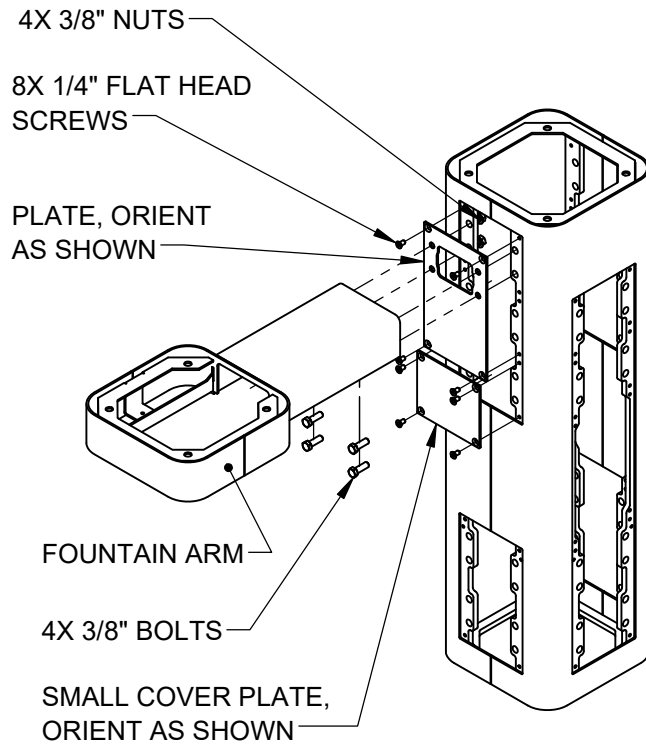
REMOVE BOTTOM COVER PLATES FROM ARMS BY REMOVING 3 1/4" BUTTON HEAD SCREWS. INSTALL ONE FOUNTAIN ARM ON RIGHT SIDE AS SHOWN. USE 1/4" FLAT HEAD SCREWS (SUPPLIED) TO INSTALL PLATE. USE 3/8" BOLTS AND NUTS (SUPPLIED) AND TORQUE TO 18 FT-LBS TO INSTALL ARM.



1455 KLEPPE LANE
SPARKS, NEVADA 89431
(775) 359-4712 FAX (775) 359-7424
E-MAIL: HAWS@HAWS.CO.COM
WEBSITE: WWW.HAWS.CO.COM

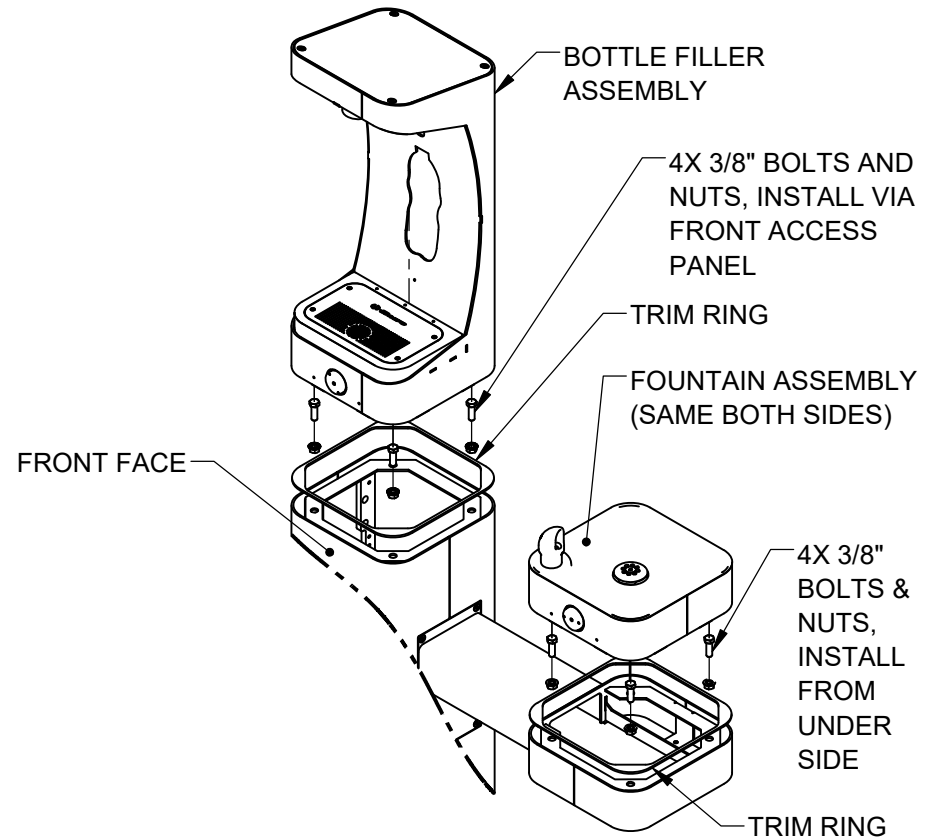
ECN: 5652	REV. ECN: 5652	BY: DP	MODEL(S) 3612 / 3612FR	PART NUMBER 0580001172.D
DRAWN: DHP	DATE: 6/11/20	CHKD: FV		REVISION 1
APPROVED: FV	DATE: 03/18/21	SCALE: 1:24	DRAWING TYPE: INSTALLATION	SIZE: A

INSTALLATION INSTRUCTIONS




STEP 3

INSTALL REMAINING ARM ON LEFT SIDE AS SHOWN. USE 1/4" FLAT HEAD SCREWS (SUPPLIED) TO INSTALL PLATES. USE 3/8" BOLTS AND NUTS (SUPPLIED) AND TORQUE TO 18 FT-LBS TO INSTALL ARM.

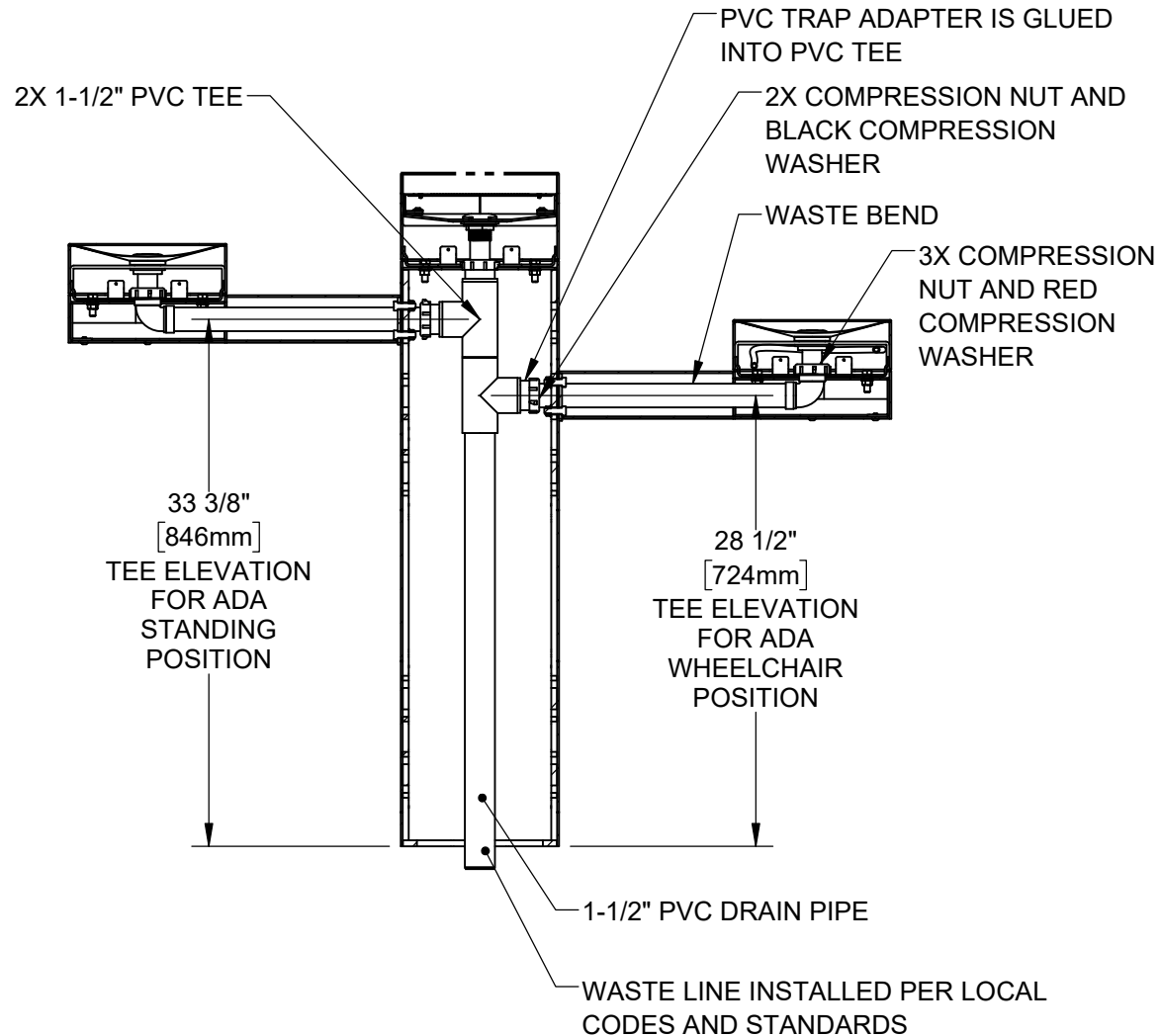


STEP 4

PLACE SQUARE TRIM RING ON BOTTOM OF BOTTLE FILLER AND PLACE BOTTLE FILLER ON TOP OF PEDESTAL, FACING THE FRONT. USE 3/8" BOLTS AND NUTS VIA THE FRONT ACCESS PANEL TO SECURE BOTTLE FILLER TO PEDESTAL. PLACE TRIM RINGS AND INSTALL FOUNTAINS ON ARMS AS SHOWN. CAREFULLY CENTER AND TORQUE TO 18 FT-LBS


				1455 KLEPPE LANE SPARKS, NEVADA 89431 (775) 359-4712 FAX (775) 359-7424 E-MAIL: HAWS@HAWSO.COM WEBSITE: WWW.HAWSO.COM			
				ECN: 5652	REV. ECN: 5652	BY: DP	MODEL(S)
DRAWN: DHP	DATE: 6/11/20	CHKD: FV	3612 / 3612FR	REVISION	1		
APPROVED: FV	DATE: 03/18/21	SCALE: 1:24	DRAWING TYPE: INSTALLATION	SIZE: A	SHEET 3 OF 7		

INSTALLATION INSTRUCTIONS

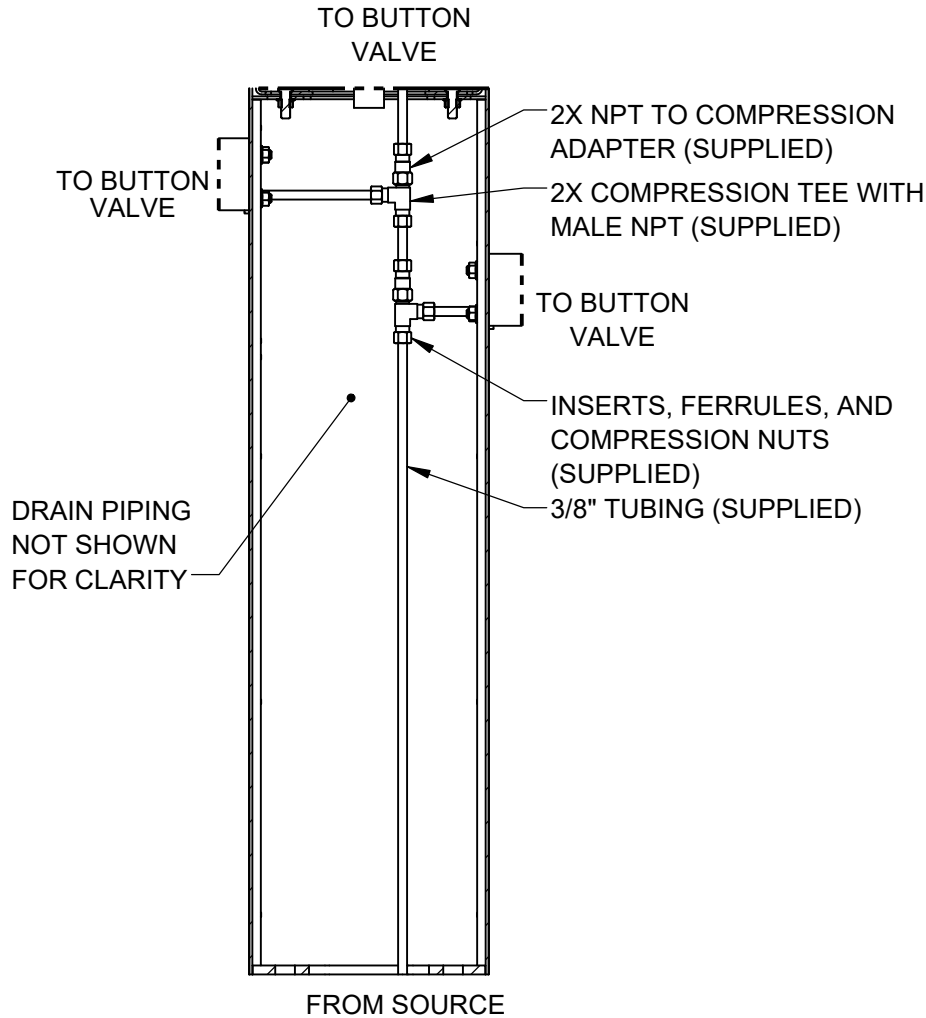


STEP 5

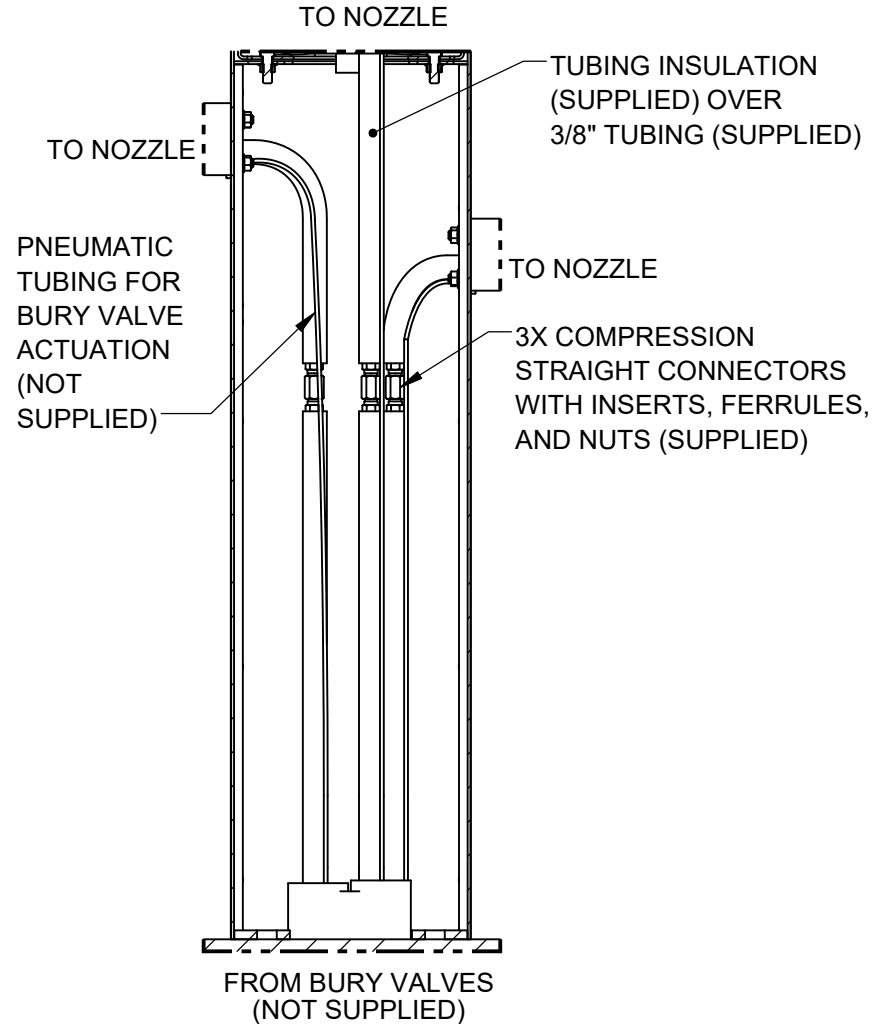
INSTALL SUPPLIED DRAIN COMPONENTS AS SHOWN. RED COMPRESSION WASHERS ADAPT FROM 1-1/4" TO 1-1/2" AT EACH DRAIN TAIL PIECE. BLACK COMPRESSION WASHERS ARE USED IN TRAP ADAPTERS AT TEES. CUT A SHORT SECTION (APPROX. 2-1/4") OF THE DRAIN PIPE TO CONNECT THE TWO TEES. USE APPROPRIATE PVC CEMENT TO MAKE SOLVENT CEMENT CONNECTIONS. TRIM WASTE BEND AND/OR TAIL PIECE LENGTH IF REQUIRED. NOTE THAT EXTRA PARTS MAY BE INCLUDED TO FACILITATE OTHER CONFIGURATIONS OF THIS FOUNTAIN.

			1455 KLEPPE LANE SPARKS, NEVADA 89431 (775) 359-4712 FAX (775) 359-7424 E-MAIL: HAWS@HAWS.CO.COM WEBSITE: WWW.HAWS.CO.COM			
			ECN: 5652 DRAWN: DHP APPROVED: FV	REV. ECN: 5652 DATE: 6/11/20 DATE: 03/18/21	BY: DP CHKD: FV	MODEL(S) 3612 / 3612FR
SCALE: 1:24			DRAWING TYPE: INSTALLATION		SIZE: A	SHEET 4 OF 7

INSTALLATION INSTRUCTIONS




3612 SUPPLY PLUMBING

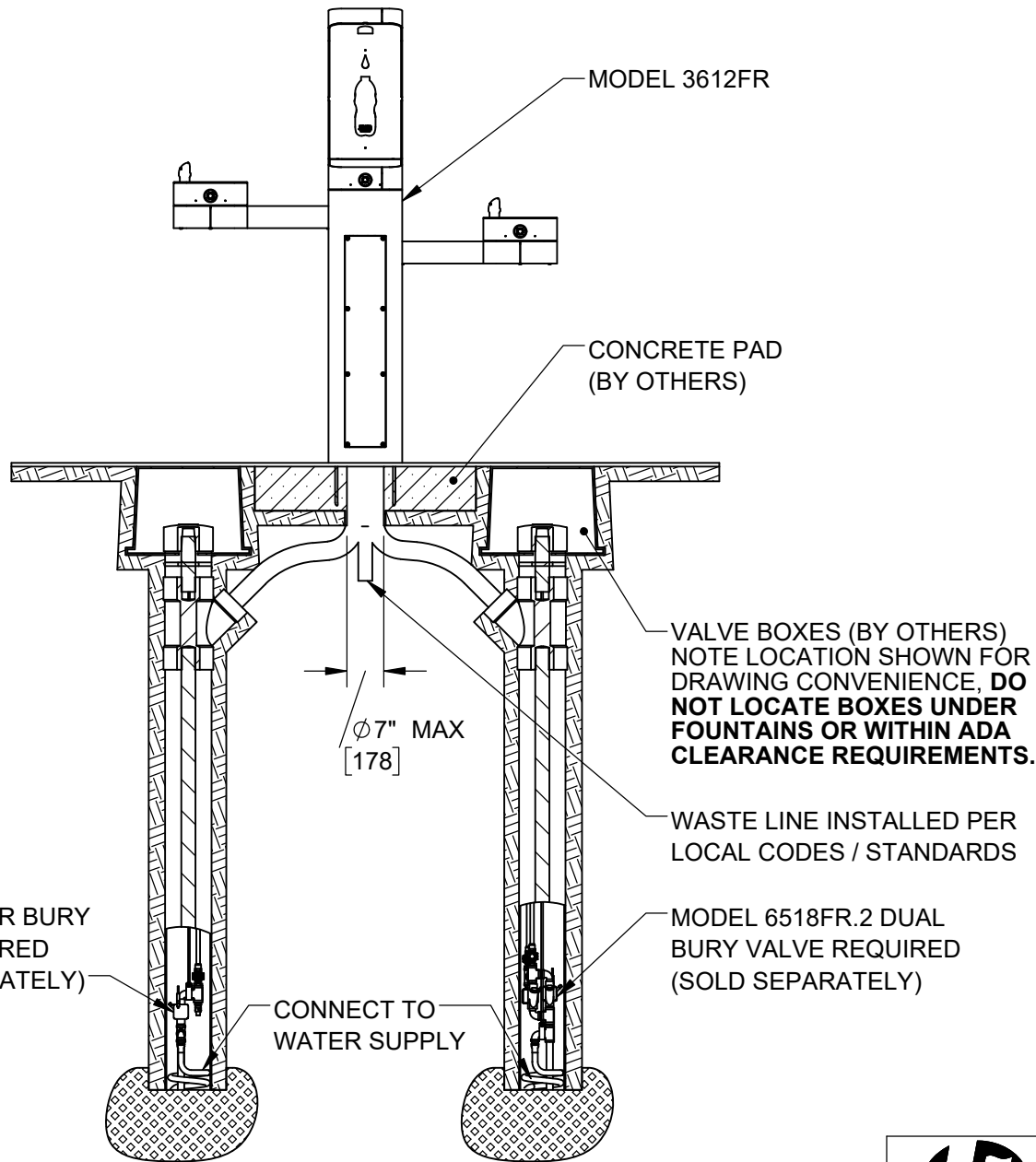


3612FR SUPPLY PLUMBING*

* SEE NEXT SHEET OF THIS DRAWING FOR MORE INFORMATION ON INSTALLING BURY VALVES WITH THIS MODEL.

STEP 6
 COMPLETE WATER SUPPLY PLUMBING AS SHOWN. OPEN SUPPLY VALVE(S) AND TEST. REPLACE ARM BOTTOM PLATES AND PEDESTAL ACCESS PLATES. BURY VALVES (NOT SUPPLIED) ARE REQUIRED FOR 3612FR INSTALLATION. REFER TO BURY VALVE OPERATION AND MAINTENANCE MANUAL FOR ADDITIONAL INFORMATION.

		1455 KLEPPE LANE SPARKS, NEVADA 89431 (775) 359-4712 FAX (775) 359-7424 E-MAIL: HAWS@HAWS.CO.COM WEBSITE: WWW.HAWS.CO.COM	
		ECN: 5652 DRAWN: DHP APPROVED: FV	REV. ECN: 5652 DATE: 6/11/20 DATE: 03/18/21
PART NUMBER 0580001172.D			REVISION 1
SCALE: 1:24 DRAWING TYPE: INSTALLATION		SIZE: A SHEET 5 OF 7	




MODEL 6518FR BURY VALVE REQUIRED (SOLD SEPARATELY)

CONNECT TO WATER SUPPLY

MODEL 6518FR.2 DUAL BURY VALVE REQUIRED (SOLD SEPARATELY)

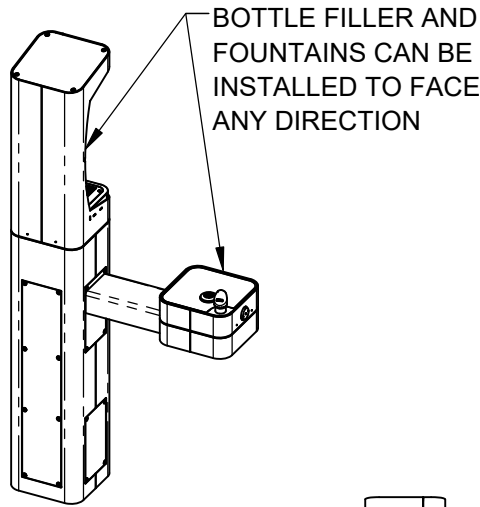
INSTALL BURY VALVES IN ACCORDANCE WITH MANUFACTURER'S INSTRUCTIONS. INSTALLATION MUST COMPLY WITH LOCAL CODES / STANDARDS, INCLUDING ADA CODES IF APPLICABLE.

3612FR GENERAL BURY VALVE LAYOUT (FOR REFERENCE ONLY)

		1455 KLEPPE LANE SPARKS, NEVADA 89431 (775) 359-4712 FAX (775) 359-7424 E-MAIL: HAWS@HAWS.CO.COM WEBSITE: WWW.HAWS.CO.COM	
		ECN: 5652 DRAWN: DHP APPROVED: FV	REV. ECN: 5652 DATE: 6/11/20 DATE: 03/18/21
PART NUMBER 0580001172.D			REVISION 1
SCALE: 1:24		DRAWING TYPE: INSTALLATION	SIZE: A
SHEET 6 OF 7			SHEET 6 OF 7

NOTES ON OPTIONAL CONFIGURATIONS

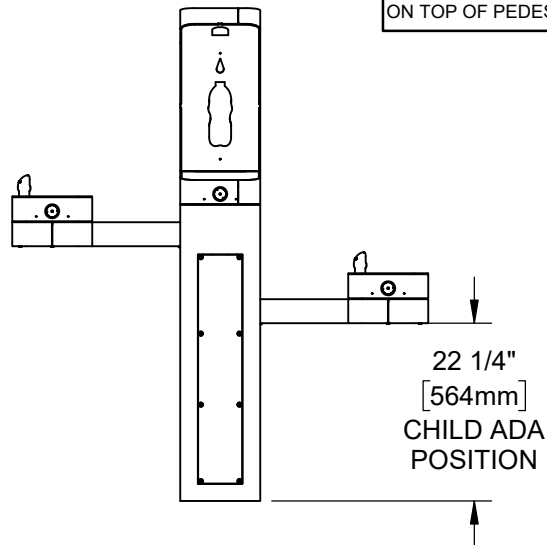
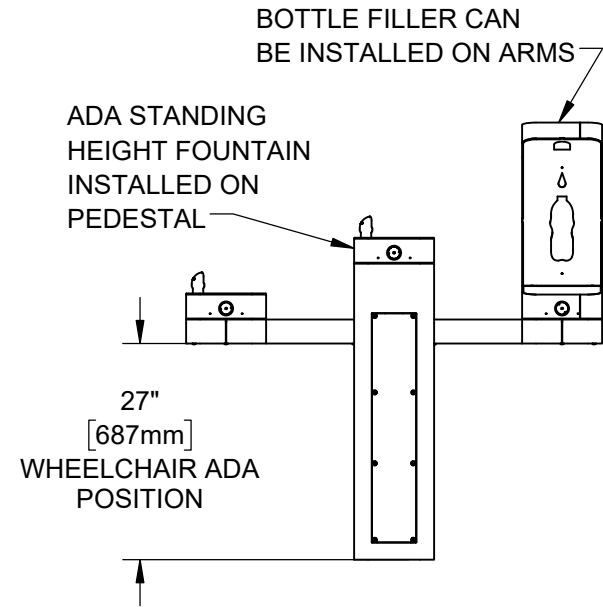
HAWS 3600 SERIES OUTDOOR FOUNTAINS ARE MODULAR AND CAN BE ASSEMBLED AND CONFIGURED MANY DIFFERENT WAYS. DISPLAYED HERE ARE A FEW EXAMPLES. CONFIGURATIONS OTHER THAN THAT SHOWN IN THE INSTALLATION INSTRUCTIONS FOR THE 3612 / 3612FR MAY AFFECT COMPLIANCE WITH ADA REGULATIONS. IT IS THE RESPONSIBILITY OF THE INSTALLER TO UNDERSTAND LOCAL, STATE, AND FEDERAL REGULATIONS AS APPLICABLE IF INSTALLING THIS FOUNTAIN IN CONFIGURATIONS OTHER THAN THAT INDICATED ON SHEET 1 (PAGE 6 OF 12).



ADA ARM HEIGHT POSITION OPTIONS				
	LEFT SIDE*	RIGHT SIDE*	ARM HEIGHT (LOWER EDGE)	BUBBLER NOZZLE HEIGHT
STANDING ADA	YES (STD)	NO	31-7/8 [809 mm]	39-3/8 [999 mm]**
WHEELCHAIR ADA	YES	Yes (STD)	27 [687 mm]	34-5/8 [878 mm]
CHILD ADA	YES	YES	22-1/4 [566 mm]	29-7/8 [757 mm]

* RIGHT AND LEFT CAN BE REVERSED IF PEDESTAL IS ROTATED 180°.

**NOZZLE HEIGHT IS 41-1/2" WHEN FOUNTAIN IS INSTALLED ON TOP OF PEDESTAL.



			1455 KLEPPE LANE SPARKS, NEVADA 89431 (775) 359-4712 FAX (775) 359-7424 E-MAIL: HAWS@HAWSO.COM WEBSITE: WWW.HAWSO.COM	
			ECN: 5652 REV. ECN: 5652 DRAWN: DHP APPROVED: FV	BY: DP DATE: 6/11/20 DATE: 03/18/21
SCALE: 1:24		DRAWING TYPE: INSTALLATION		SIZE: A



model **6425**
Water Filter

FEATURES & BENEFITS

ADVANCED FILTRATION

Performance demonstrated under NSF Standard 42 by independent, certified testing laboratory.

OPTIONS

For more information, visit www.hawsc.com or call (888) 640-4297.



SPECIFICATIONS

Haws model 6425 Activated Carbon granule filter removes chlorine taste and odor, and water born sediment. Polypropylene filter housing is 2" (5.1 cm) in diameter by 6" (15.2 cm) long, 3/8" NPTF inlet and outlet. Rated for .5 gpm (1.9 L) and has a 1000 gallon capacity. This filter protects the water flow for one bubbler, two filters are required for Hi-Low, dual-height or multi-bubbler drinking fountains. Haws manufactures drinking fountains, electric water coolers and electric drinking fountains to be lead-free by all known definitions including ANSI/NSF Standard 61, Section 9, California Proposition 65 and the Federal Safe Drinking Water Act.

APPLICATIONS