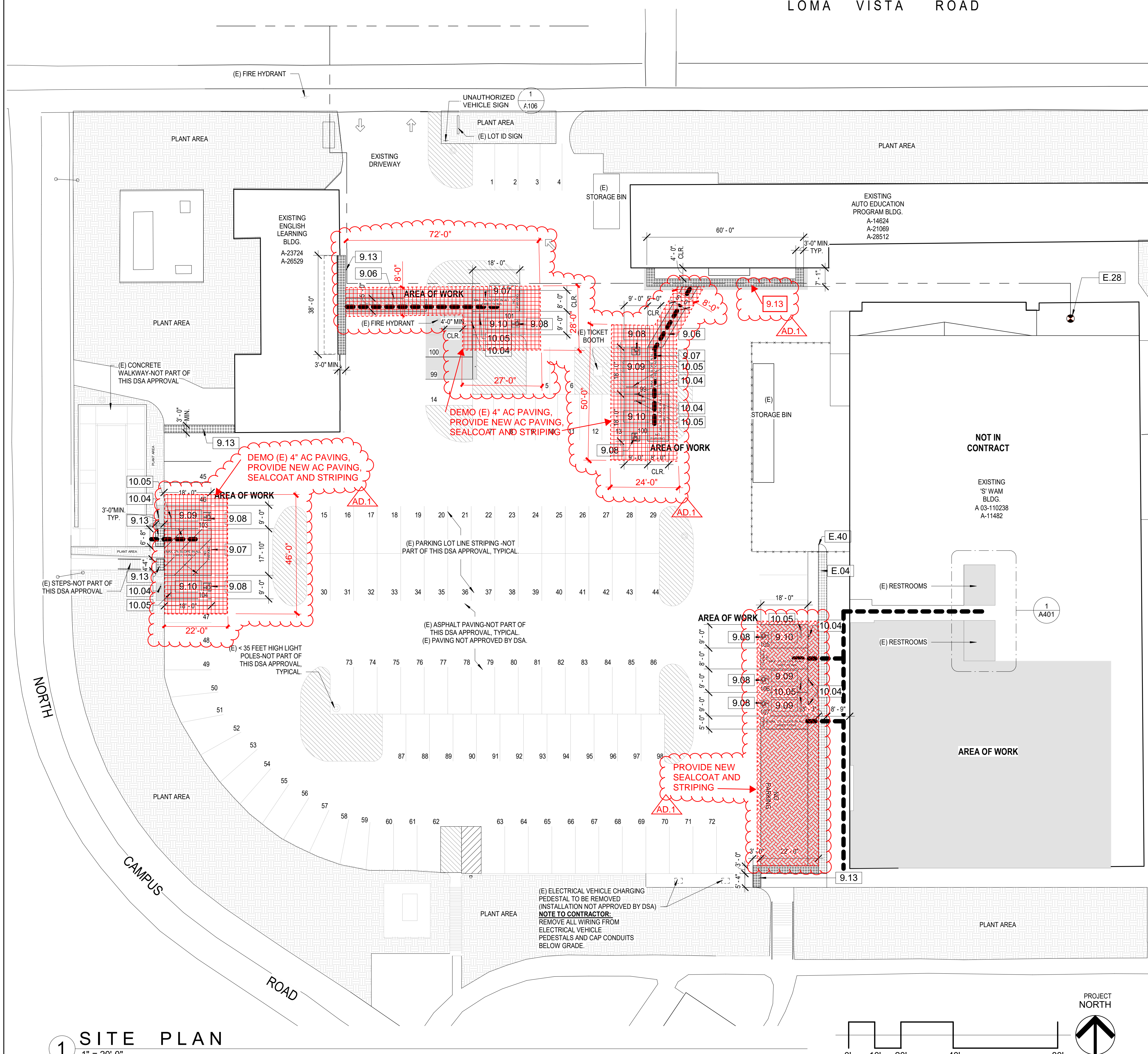


LOMA VISTA ROAD



**GENERAL NOTES**

- DESIGN PROFESSIONAL IN GENERAL RESPONSIBLE CHARGE STATEMENT: THE P.O.T. IDENTIFIED IN THESE CONSTRUCTION DOCUMENTS IS COMPLIANT WITH THE CURRENT APPLICABLE CALIFORNIA BUILDING CODE ACCESSIBILITY PROVISIONS FOR PATH OF TRAVEL REQUIREMENTS FOR ALTERATIONS, ADDITIONS AND STRUCTURAL REPAIRS. AS PART OF THE DESIGN OF THIS PROJECT, THE P.O.T. WAS EXAMINED AND ANY ELEMENTS, COMPONENTS OR PORTIONS OF THE P.O.T. THAT WERE DETERMINED TO BE NONCOMPLIANT 1) HAVE BEEN IDENTIFIED AND 2) THE CORRECTIVE WORK NECESSARY TO BRING THEM INTO COMPLIANCE HAS BEEN INCLUDED WITHIN THE SCOPE OF THIS PROJECT'S WORK THROUGH DETAILS, DRAWINGS AND SPECIFICATIONS INCORPORATED INTO THESE CONSTRUCTION DOCUMENTS. ANY NONCOMPLIANT ELEMENTS, COMPONENTS OR PORTIONS OF THE P.O.T. THAT WILL NOT BE CORRECTED BY THIS PROJECT BASED ON VALUATION THRESHOLD LIMITATIONS OR A FINDING OF UNREASONABLE HARDSHIP ARE SO INDICATED IN THESE CONSTRUCTION DOCUMENTS. DURING CONSTRUCTION, IF P.O.T. ITEMS WITHIN THE SCOPE OF THE PROJECT REPRESENTED AS CODE COMPLIANT ARE FOUND TO BE NONCONFORMING BEYOND REASONABLE CONSTRUCTION TOLERANCES, THEY SHALL BE BROUGHT INTO COMPLIANCE WITH THE CBC AS A PART OF THIS PROJECT BY MEANS OF A CONSTRUCTION CHANGE DOCUMENT." (DSA PR15-01)
- ALL ITEMS SHOWN ARE EXISTING UNLESS OTHERWISE NOTED AS NEW.

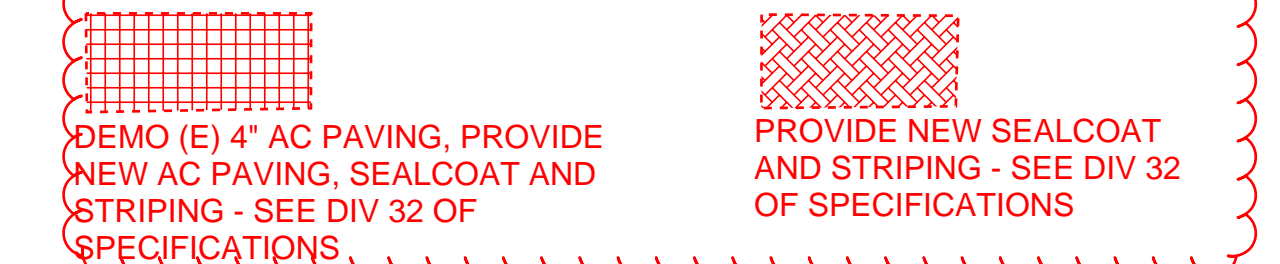
**EXISTING KEYNOTES** #

- E.04 (E) 3'-0" WIDE TRUNCATED DOME TACTILE WARNING PAVERS. SEE A# 03-110238.
- E.28 (E) FIRE SPRINKLER SYSTEM RISER. A# 03-110238. SEE P3.0.
- E.40 (E) NON ACCESSIBLE SERVICE GATE.

**KEYNOTES** #

- 9.06 (N) NO PARKING WHITE BORDER STRIPING. PER 6/G003.
- 9.07 (N) ACCESSIBLE AISLE PAINTED BLUE 4" WIDE BORDERLINE AND HATCHED LINES AT 36" MAX. O.C. 8" WIDE X LENGTH OF STALL. PER 6/G003.
- 9.08 (N) ADA COMPLIANT INTERNATIONAL SYMBOL OF ACCESSIBILITY 36" X 36" PER 2/A106
- 9.09 (N) ACCESSIBLE PARKING STALL PER 6/G003.
- 9.10 (N) ACCESSIBLE VAN PARKING STALL PER 6/G003.
- 9.13 (N) TRUNCATED DOME 3" WIDE. SEE 4/A106. SAWCUT AND DEMO (E) PAVING AS NEEDED TO PREP FOR NEW WORK.
- 10.04 (N) ACCESSIBLE PARKING STALL SIGN. SEE 3/A106.
- 10.05 (N) CONCRETE WHEEL STOP PER ACCESSIBLE PARKING STALL. SEE 3/A106.

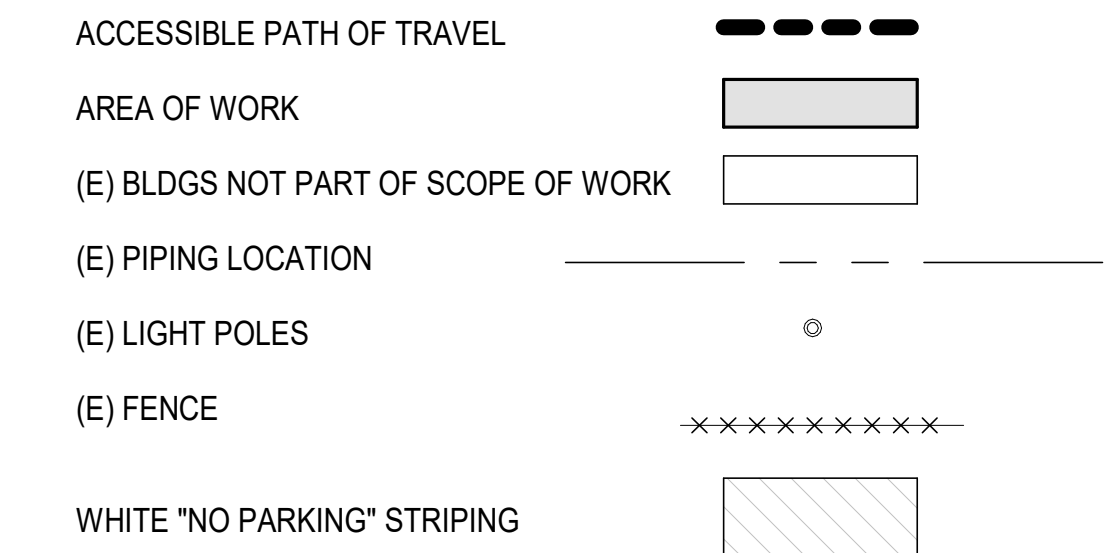
**PAVING LEGEND**



**PARKING COUNT**

	PROVIDED	REQUIRED
ACCESSIBLE PARKING STALL	04	04
ACCESSIBLE VAN PARKING STALL	04	01
PARKING STALL	98	
TOTAL PARKING STALLS	106	

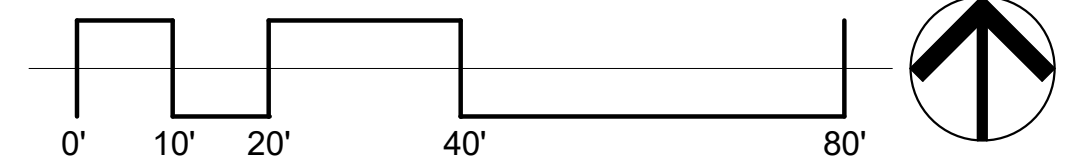
**LEGEND**



**PATH OF TRAVEL, TECHNICAL REQUIREMENTS FOR ACCESSIBLE ROUTE**

"ACCESSIBLE PATH OF TRAVEL AS INDICATED ON PLAN IS A BARRIER-FREE ACCESS ROUTE WITHOUT ABRUPT LEVEL CHANGES EXCEEDING 1/2" IF BEVELED AT 1:2 MAXIMUM SLOPE OR VERTICAL LEVEL CHANGES NOT EXCEEDING 1/4" MAXIMUM AND AT LEAST 48" IN WIDTH. SURFACE IS STABLE, FIRM, AND SLIP RESISTANT. CROSS-SLOPE SHALL NOT BE STEEPER THAN 1:20. ACCESSIBLE PATH OF TRAVEL SHALL BE MAINTAINED FREE OF OVERHANGING OBSTRUCTIONS TO 80" MINIMUM AND FREE OF OBJECTS PROTRUDING MORE THAN 4" FROM THE WALL, ABOVE 27" AND LESS THAN 80" ABOVE THE FLOOR. ARCHITECT SHALL VERIFY THAT THERE ARE NO BARRIERS IN THE PATH OF TRAVEL."

**1 SITE PLAN**  
1" = 20'-0"



PROJECT TITLE  
**21-VCCCD-005- VENTURA COLLEGE DIESEL SHOP**

4667 TELEGRAPH RD. VENTURA, CA 93003

COMMISSIONED ARCHITECT  
**AMADOR WHITTLE ARCHITECTS, INC.**  
28328 AGOURA ROAD, SUITE 203  
AGOURA HILLS, CA 91301  
(805) 530-3938 (818) 874-0071

CONSULTANT



DSA V3 SUBMITTAL 04/19/2023  
ADDENDUM 1 7-25-2023

SHEET TITLE:

**SITE PLAN**

PROJECT NO. 21-VCCCD-005 PROJECT ARCH. WJA  
DRAWN MC CHECKED WJA

**A101**

DATE: 02/25/2022 SHEET: OF