

BIDDING DOCUMENTS  
TABLE OF CONTENTS

DIVISION 00 - PROCUREMENT AND CONTRACTING REQUIREMENTS .....	Number of Pages
00 0101 Project Title Page.....	01
00 0110 Table of Contents.....	03
DIVISION 01 - GENERAL REQUIREMENTS	
01 7329 Cutting and Patching.....	07
DIVISION 02 - EXISTING CONDITIONS	
02 4116 Demolition .....	04
DIVISION 03 - CONCRETE	
03 1000 Concrete Forming Accessories.....	05
03 2000 Concrete Reinforcing.....	05
03 3000 Cast-In-Place Concrete .....	17
DIVISION 05 - METALS	
05 0513 Hot-Dip Galvanizing .....	06
05 5000 Metal Fabrications .....	08
DIVISION 06 - WOOD, PLASTICS, AND COMPOSITES	
06 1000 Rough Carpentry.....	08
DIVISION 07 - THERMAL AND MOISTURE PROTECTION	
07 2719 Plastic Sheet Air Barriers .....	05
07 6000 Flashing and Sheet Metal .....	05
07 9200 Joint Sealants .....	06
DIVISION 09 - FINISHES	
09 2423 Cement Plaster and Metal Lath .....	11
09 2900 Gypsum Board .....	07
09 3013 Ceramic Tiling .....	09
09 5113 Acoustical Panel Ceilings.....	08
09 6513 Rubber Base .....	04
09 6519 Vinyl Composition Tile.....	06
09 9000 Painting and Coating.....	09
09 6813 Playground Safety Surfacing.....	04
DIVISION 10 - SPECIALTIES	
10 1400 Signage.....	10



210121		
10 2813	Toilet Accessories.....	03

DIVISION 22 – PLUMBING

22 0500	Common Work Results for Plumbing.....	05
22 0505	Trenching and Backfilling for Plumbing Piping.....	06
22 0510	Plumbing Piping .....	07
22 0523	General-Duty Valves for Plumbing Piping.....	05
22 4000	Plumbing Fixtures and Equipment .....	06

DIVISION 26 - ELECTRICAL

26 0000	General Provisions.....	11
26 0030	Tests and Identification.....	07
26 0050	Basic Electrical Materials & Methods .....	06
26 0060	Minor Electrical Demolition for Remodeling.....	03
26 0111	Conduits .....	06
26 0120	Conductors .....	04
26 0130	Electrical Boxes .....	04
26 0140	Wiring Devices .....	09
26 0142	Nameplates and Warning Signs .....	02
26 0164	Branch Circuit Panelboards.....	03
26 0170	Disconnects .....	02
26 0190	Support Devices.....	02
26 2450	Grounding .....	06
26 2510	Lighting Fixtures.....	03
26 4721	Fire Alarm System.....	34

DIVISION 27 - ELECTRICAL

27 5127	Public Address Assistive Listening Systems .....	10
---------	--	----

DIVISION 31 – EARTHWORK

31 1000	Site Clearing.....	03
31 2000	Earthwork.....	06
31 2333	Trenching and Backfilling.....	04

DIVISION 32 – EXTERIOR IMPROVEMENTS

32 1123	Aggregate Base Courses.....	02
32 1216	Asphalt Concrete Paving .....	04
32 1600	Curbs, Gutters, Sidewalks .....	04
32 1723.13	Painted Pavement Markings .....	01

210121		
32 8423	Irrigation System .....	06
32 9020	Lawn Renovation.....	04
32 9030	Landscape Maintenance .....	03
32 9315	Landscape Planting.....	05
32 9335	Sod Lawn Planting.....	02
32 9340	Decomposed Granite Path.....	02

DIVISION 33 – UTILITIES

33 1000	Water Utilities.....	07
---------	----------------------	----

END OF TABLE OF CONTENTS



## PART 1.0- GENERAL

### 1.1 SUMMARY

A. The work of this section includes:

1. PlayGuard 2-1/2" Carnival Ultra Safety Tiles

B. Related Sections: Section(s) related to this section include:

1. Concrete Substrate: Division 3 Concrete Section(s)

### 1.2 REFERENCES

A. Standards listed by reference, including revisions by issuing authority, form a part of this specification section to extent indicated. Standards listed are identified by issuing authority, authority abbreviation, designation number, title or other designation established by issuing authority. Standards subsequently referenced herein are referred to by issuing authority abbreviation and standard designation.

B. ASTM International:

1. See Part 2.0 PROPRIETARY MANUFACTURER/PRODUCTS below

### 1.3 SYSTEM DESCRIPTION

A. Performance Requirements: Provide PlayGuard, which has been manufactured and installed to maintain performance criteria stated by Manufacturer without defects, damage or failure.

### 1.4 SUBMITTALS

A. General: Submit listed submittals in accordance with Conditions of the Contract and Division 1 Submittal Procedures Section.

B. Product Data: Submit product data, including manufacturer's guide specifications product sheet, for specified products.

C. Shop Drawings: Submit shop drawings showing layout, profiles and product components, including anchorage, accessories, finish colors, patterns, and textures.

D. Samples: Submit selection and verification samples for finishes, colors, and textures.

E. Quality Assurance Submittals: Submit the following:

1. Provide Manufacturer's current installation guidelines as published by the Manufacturer.
2. Certificates: If required, certification of performance characteristics specified in this document shall be provided by the Manufacturer.
3. Manufacturer's Field Reports: Manufacturer's field reports specified herein.

F. Closeout Submittals: Submit the following:

1. Operation and Maintenance Data: Operation and maintenance data for installed products in accordance with Division 1 Closeout Submittals (Maintenance Data and Operational Data) Section. Include methods for maintaining installed products and precautions against cleaning materials and methods detrimental to finishes and performance.

2. Warranty: Warranty documents specified herein.

## 1.5 QUALITY ASSURANCE

A. Design and Detailing

1. Refer to manufacturer's technical and installation manual for approved substrates and installation techniques.

B. Qualifications:

1. Installer Qualifications: Installer experienced in performing work of this section who has specialized in installation of work similar to that required for this project. a. Certificate: When requested, submit certificate indicating qualification. 2. Manufacturer's Qualifications: Manufacturer capable of providing field service representation during construction and approving application method.

C. Mock-Ups: Install at project site a job mock-up using acceptable products and Manufacturer-approved installation methods. Obtain Owner and Architect's acceptance of finish color, texture and pattern, and workmanship standard. Comply with Division 1 Quality Control (Mock-Up Requirements) Section.

1. Mock-Up Size: As specified 2. Maintenance: Maintain mock-up during construction for workmanship comparison; remove and legally dispose of mock-up when no longer required. 3. Incorporation: Mock-up may be incorporated into final construction upon Owner's approval.

D. Pre-installation Meetings: Conduct pre-installation meeting to verify project requirements, substrate conditions, Manufacturer's instructions and Manufacturer's warranty requirements.

E. Pre-installation Testing: Conduct pre-installation testing to comply with PlayGuard Technical Manual.

## 1.6 DELIVERY, STORAGE & HANDLING

A. General: Comply with Division 1 Product Requirements Sections.

B. Ordering: Comply with Manufacturer's ordering instructions and lead time requirements to avoid construction delays.

C. Delivery: Deliver materials in Manufacturer's original, unopened, undamaged containers with identification labels intact.

D. Storage and Protection: Store materials at temperature and humidity conditions recommended by Manufacturer and protect from exposure to harmful weather conditions.

## 1.7 PROJECT CONDITIONS

A. Temperature Requirements: Adhesive application shall be at temperatures above 40° F and below 100° F.

B. Field Measurements: Verify actual measurements/openings by field measurements before fabrication; show recorded measurements on shop drawings. Coordinate field measurements and fabrication schedule with construction progress to avoid construction delays.

## 1.8 WARRANTY

A. Project Warranty: Refer to Conditions of the Contract for project warranty provisions.

B. Manufacturer's Warranty: Submit, for Owner's acceptance, Manufacturer's standard warranty document executed by authorized company official. Manufacturer's warranty is in addition to and not a limitation of other rights Owner may have under Contract Documents.

1. Warranty Period: (Five) years per Ecore Warranty Guide.

## 1.9 MAINTENANCE

A. Extra Materials: Deliver extra materials to Owner from same production run as products installed. Package products with protective covering and identify with descriptive labels. Comply with Division 1 Closeout Submittals (Maintenance Materials) Section.

1. Quantity: Furnish quantity of recycled rubber flooring with PlayGuard units equal to a minimum of 5% of amount installed.

2. Delivery, Storage and Protection: Comply with Owner's requirements for delivery, storage, and protection of extra material

## PART 2.0 - PROPRIETARY MANUFACTURER / PRODUCTS

### 2.1 MANUFACTURER: Ecore

A. Address: 715 Fountain Ave., Lancaster, PA 17601; Telephone: (800) 322-1923, (717) 295-3400; Fax: (717) 295-3414; Email: [info@ecoreintl.com](mailto:info@ecoreintl.com)

### 2.2 PROPRIETARY PRODUCT

PlayGuard 2-1/2" Carnival Ultra Safety Tiles

PlayGuard 2-1/2" Playground Carnival Ultra Safety Tiles

Made from Vulcanized Composition Rubber with an EPDM surface wear layer:

Tile Dimensions Manufacturer Nominal thickness: 2-1/2" Width: 24" Length: 24"

Dimensional Tolerances Manufacturer Length/Width/Thickness: +/- 1/8" (3.2mm)

Coefficient of Friction ASTM D2047 0.8 Min

Critical Fall Height ASTM F1292 2-1/2" thick (5 ft.)

Abrasive Testing ASTM D3389 Less than 0.200g lost

Flammability ASTM D2859 (Pill) Passed

Elongation at Break ASTM D412, DIE C 70% (min.)

Tensile Strength ASTM D412, DIE C 250 lbs /in<sup>2</sup> min.

Wear Surface Density Manufacturer 70 lbs /cu ft (min.) Void Volume (calc) Manufacturer 40%

Wheelchair Accessibility ASTM F1951 Pass

## 2.4 PRODUCT SUBSTITUTIONS

A. Substitutions: Refer to Division 01.

## PART 3.0- EXECUTION

### 3.1 MANUFACTURER'S INSTRUCTIONS

A. Compliance: Comply with Manufacturer's product data, including product technical bulletins, product catalog installation instructions and product carton instructions for installation.

### 3.2 EXAMINATION

A. Site Verification of Conditions: Verify substrate conditions, which have been previously installed under other sections, are acceptable for product installation in accordance with Manufacturer's instructions.

3.3 PREPARATION A. Surface Preparation: Comply with the PlayGuard Technical Manual

### 3.4 ERECTION/INSTALLATION/APPLICATION/CONSTRUCTION

A. Installation: Comply with the PlayGuard Technical Manual for installation procedures.

B. Finish Color/Textures/Patterns: Per Architects Selection, refer to drawings.

C. Related Products Installation: Refer to other sections listed in Related Sections.

### 3.5 FIELD QUALITY REQUIREMENTS

A. Manufacturer's Field Services: Upon Owner's request, provide Manufacturer's field service consisting of product use recommendations.

1. Site Visits: Verify existing site conditions of concrete work before shop drawings.

### 3.6 CLEANING

A. Cleaning: Clean installed products in accordance with Manufacturer's instructions prior to Owner's acceptance. Remove construction debris from project site and legally dispose of debris.

### 3.7 PROTECTION

A. Protection: Protect installed product and finish surfaces from damage during construction.

**END OF SECTION**

# CDC-INSTALLATION (1) PC - MODULAR BUILDING (40'X48') & (2) - PC SHADE STRUCTURES (30'X30')

VENTURA COMMUNITY COLLEGE - CHILD DEVELOPMENT CENTER  
4667 TELEGRAPH RD. VENTURA, CA.9003

## DRAWING LIST - PC 02-120719 MODULAR BUILDING & SHADE STRUCTURE PC 04-119454

GENERAL	TITLE SHEET	E200	ELECTRICAL SINGLE LINE DIAGRAM AND PANEL SCHEDULES
G0.01	GENERAL NOTES & ABBREVIATIONS	E401	POWER PLAN - ENLARGED AREA
G0.02	GENERAL NOTES & ABBREVIATIONS	E405	POWER PLAN - MODULAR BUILDING
G0.03	ACCESSIBILITY NOTES AND DETAILS	E410	TYPICAL ELECTRICAL PLAN
G0.04	CAMPUS SITE PLAN	E600	ELECTRICAL DETAILS
CIVIL	SITE DEMOLITION AND GRADING PLAN	FIRE ALARM	
C1.00	SITE DEMOLITION AND GRADING PLAN	FA100	FIRE ALARM GENERAL NOTES, SYMBOLS & ABBREVIATION
C1.50	DEMOLITION PLAN	FA101	ENLARGED FIRE ALARM PLAN
C2.00	SITE DEMOLITION AND GRADING PLAN	FA102	FIRE ALARM DETAIL SHEET
C3.00	FIRE WATER & HYDRANT PLAN	FA103	FIRE ALARM RISER DIAGRAM, VOLTAGE DROP & BATTERY CALC
C4.00	DETAILS	FA104	FIRE ALARM DATA SHEETS
LANDSCAPE		FA105	FIRE ALARM DATA SHEETS
L1.1	RENOVATED LANDSCAPE PLAN	FA106	FIRE ALARM DATA SHEETS
L1.2	PLANTING PLAN	FA107	FIRE ALARM DATA SHEETS
L2.1	IRRIGATION PLAN	FA108	FIRE ALARM DATA SHEETS
L3.1	LANDSCAPE DETAILS	FA109	FIRE ALARM DATA SHEETS
L3.2	SHADE CALCULATIONS	FA110	FIRE ALARM DATA SHEETS
L3.3	MWEL0 WORKSHEET		
FIRE PROTECTION		AMERICAN MODULAR SYSTEM	
FP0.01	LOCAL FIRE AUTHORITY SITE PLAN	0-TS	TITLE SHEET
ARCHITECTURE		0-TS2	SHEET INDEX
A0.21	CODE & EGRESS ANALYSIS	0.D1	FORM DSA-103
A0.22	SITE PLAN	0.N1.0	GENERAL NOTES& SPECIFICATIONS
A0.23	ENLARGED SITE PLAN-DEMOLITION	0.N2.0	GENERAL NOTES& SPECIFICATIONS
A0.24	ENLARGED SITE PLAN - PROPOSED	0.N3.0	TYPICAL SCHEDULES DOORS, WINDOWS & FINISHES
A1.10	ENLARGE FLOOR PLAN - MODULAR BUILDING & ACCESSIBLE GATE	0.N4.0	ACCESSIBILITY STANDARDS AND DETAILS
A2.01	EXTERIOR ELEVATIONS & DETAILS - MODULAR BUIDLING	0.N5.0	MULTIPLE FLOOR PLAN CONFIGURATIONS
A4.01	INTERIOR ELEVATIONS - RESTROOM	0E.N.1	ENERGY CALCULATIONS
A5.01	DETAILS	0E.N.2	ENERGY CALCULATIONS
A5.02	CEILING NOTES AND DETAILS	0E.N.3	ENERGY CALCULATIONS
A6.01	DOOR SCHEDULE, SIGNAGE SCHEDULE & DETAILS	0E.N.4	ENERGY CALCULATIONS
A7.01	SIGNAGE DETAILS	0E.N.5	ENERGY CALCULATIONS
USA SHADE		0E.N.6	ENERGY CALCULATIONS
0 P.C. T-1.0	TITLE SHEET	0E.N.7	ENERGY CALCULATIONS
0 P.C. T-2.0	DSA 103 SAMPLE FORMS	0E.N.8	ENERGY CALCULATIONS
0 P.C. T-2.1	DSA 103 SAMPLE FORMS	0E.N.9	ENERGY CALCULATIONS
0 P.C. T-3.0	DSA 103 SAMPLE FORMS	0E.N.10	ENERGY CALCULATIONS
0 P.C. T-3.1	DSA 103 SAMPLE FORMS	A1.0	TYPICAL FLOOR PLAN
21.1-1000	PRODUCT INFORMATION	A2.0	TYPICAL ROOF PLAN METAL STANDING SEAM
21.2-2000	REACTIONS	A2.2	TYPICAL ROOF DETAILS METAL STANDING SEAM
PLUMBING		A4.0	INTERIOR ELEVATIONS TYPICAL CLASSROOM
P1.0	PLUMBING NOTES & SCHEDULE	A4.0A	INTERIOR ELEVATIONS TYPICAL OFFICE
P2.0	PLUMBING SITE PLAN	A5.0	TYPICAL EXTERIOR ELEVATIONS
P2.1	ENLARGED PLUMBING PLANS	A5.1	TYP. ARCHITECTURAL DETAILS
ELECTRICAL		A6.0	TYPICAL LONGITUDINAL AND TRANSVERSE BUILDING SECTIONS
E100	GENERAL NOTES, ABBREVIATIONS, SYMBOLS & DRAWING LIST	A7.1	MISCELLANEOUS ARCHITECTURAL DETAILS
E130	SITE LIGHTING PLAN	AS0.0	LIGHT GUAGE STEEL MEMBER
E131	SITE LIGHTING PHOTOMETRIC PLAN		
E132	S1 FIXTURE MANUFACTURE SHEETS		
E133	S2A FIXTURE MANUFACTURE SHEETS		
E134	S2B FIXTURE MANUFACTURE SHEETS		
E140	POWER PLAN - ENLARGED AREA		

### SCOPE OF WORK

- RELOCATION OF ONE (1) 02-120719 - MODULAR BUILDING (40' X 48').
- CONSTRUCTION OF TWO (2) PC 4- POST HIP MODEL- DSA401303012-19 (30' X 30') SHADE STRUCTURES
- UPGRADE PATH OF TRAVEL FROM RELOCATED MODULAR BUILDING TO ENTRY OF EXISTING CHILD DEVELOPMENT CENTER BUILDING TO BE 2019 CODE COMPLIANT.
- ADD VAN ACCESSIBLE PARKING SPACE.
- UPGRADE EXISTING ACCESSIBLE RESTROOM INSIDE EXISTING CHILD DEVELOPMETN CENTER BUILDING TO BE 2019 CODE COMPLIANT AND INSTALL FIRE ALARM NOTIFICATION DEVICES IN RESTROOM.

### SITE SPECIFIC STRUCTURAL DESIGN CRITERIA

SEISMIC:	WIND:	CLIMATE:
RISK CATEGORY: II	WIND IMPORTANCE FACTOR: 1.0	ZONE 6
SITE CLASS: D-DEFAULT	EXPOSURE CATEGORY: C	
Ss = 1.992	WIND SPEED: 93 MPH	
S1 = 0.749		

SITE SPECIFIC: THE SITE IS NOT IN A WILDLAND URBAN INTERFACE AREA.

### CODE ANALYSIS

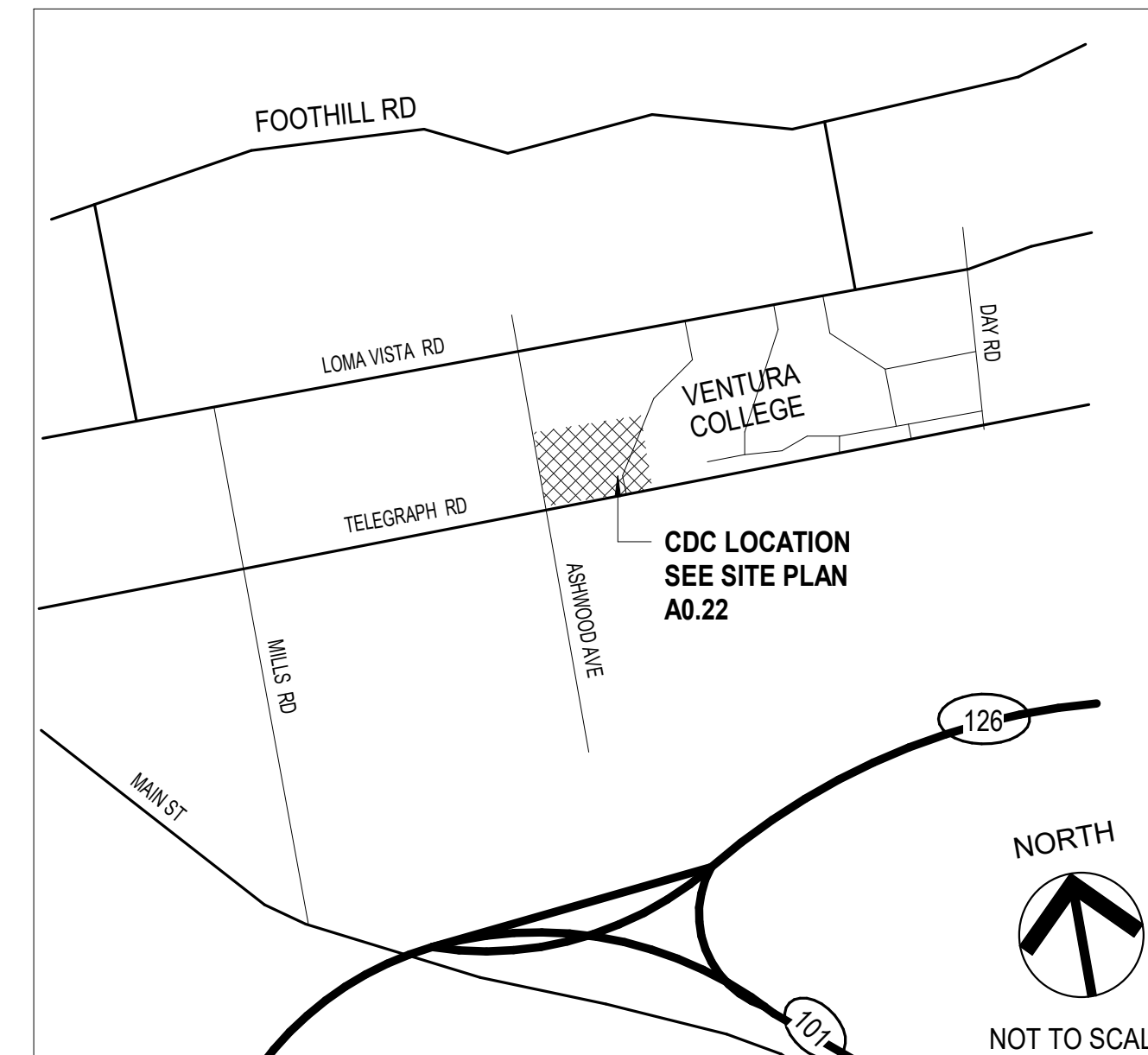
EXISTING CHILD DEVELOPMENT CENTER AF 03-53955

OCCUPANCY GROUP:	E DIV. 3
CONSTRUCTION TYPE:	V-N
NUMBER OF STORIES:	1
BUILDING HEIGHTS:	16 FEET ( 40 FEET MAX. ALLOWED PER UBC 1988 TABLE 5-D)
BUILDING AREA:	ENCLOSED AREA 7,782.25 SF COVERED WALKS 475.25 SF
	TOTAL: 8,257.50 SF
FIRE SPRINKLERS:	NONE
PROPOSED MODULAR CLASSROOM PC 02-120719	
OCCUPANCY GROUP:	E (CLASSROOM USE FOR COLLEGE)
CONSTRUCTION TYPE:	V-B
NUMBER OF STORIES:	1
BUILDING HEIGHTS:	13.5 FEET
BUILDING AREA:	1,920 SF
FIRE SPRINKLERS:	NONE
OCCUPANT LOAD FACTOR:	(1004.5)
ONE MODULAR BUILDING =	(20 NET - ONE CLASSROOM USED FOR TABLES AND CHAIRS) + (150 GROSS - 3 OFFICES)
OCCUPANT LOAD	1442.03 S.F. / 20 S.F. PER OCCUPANT = 72 OCCUPANTS (CLASSROOM AREA 101) 100.03 S.F. / 150 S.F. PER OCCUPANT = 1 OCCUPANT (OFFICE 102, 103, 104)

### SHADE STRUCTURES - PC

OCCUPANCY TYPE:	A-3
CONSTRUCTION TYPE:	VB
ACTUAL BUILDING HEIGHT ABOVE GRADE:	14' - 0" MAX.
ALLOWABLE NUMBER OF STORIES ABOVE GRADE (TABLE 504.4)	1 STORY
ACTUAL NUMBER OF STORIES	1 STORY COMPLIANT
ALLOWABLE AREA FACTOR (TABLE 506.2)	9,500 S.F.
ACTUAL FLOOR AREA (900 S.F. EACH)	900 S.F. COMPLIANT
MAX. OCCUPANCY	60
OCCUPANT LOAD FACTOR	35 S.F. PER OCCUPANT
OCCUPANT LOAD (900 S.F. / 35 S.F. = 26)	26 EACH SHADE STRUCTURE

### VICINITY MAP



### STATEMENT

RESPONSIBLE ENGINEER/ARCHITECT HAS VERIFIED THE LOCATION OF THE UTILITIES SHOWN AS EXISTING AND THAT THEIR CAPACITY IS ADEQUATE FOR THE ADDITIONAL LOAD

SIGNATURE OF THE ARCHITECT \_\_\_\_\_ DATE \_\_\_\_\_

SUBMITTAL:

DATE:

### PROJECT TEAM

**ARCHITECT**  
AMADOR ARCHITECTURE  
28328 AGOURA RD. #203  
AGOURA HILLS, CA 93021  
(805) 530 - 3938

**STRUCTURAL**  
ORION STRUCUTRAL GROUP, INC.  
223 E. THOUSAND OAKS BLVD., #304  
THOUSAND OAKS, CA 91360  
(805) 390 - 9242

**LANDSCAPE**  
JORDAN, GILBERT & BAIN LANDSCAPE ARCHITECTS, INC.  
459 N. VENTURA AVE.,  
VENTURA, CA 93001  
(805) 642-3641

**CIVIL ENGINEER**  
ENCOMPASS CONSULTANT GROUP  
333 N. LANTANA STREET, SUITE 287  
CAMARILLO, CA 93010  
(805) 416 - 8701

**MECHANICAL/PLUMBING ENGINEER**  
AE GROUP PLUMBING ENGINEER, INC.  
838 E FRONT STREET,  
VENTURA, CA 93001  
(805) 416 - 8701

**ELECTRICAL ENGINEER**  
LUCCI & ASSOCIATES, INC.  
3251 CORTE MALPASO, SUITE 511  
CAMARILLO, CA 93012  
(805) 389 - 6520

**MODULAR BUILDING SUPPLIER**  
AMERICAN MODULAR SYSTEM  
787 SPRECKELS AVE.  
MANTECA, CA 95366  
(562) 208 - 8765

**SHADE STRUCTURE SUPPLIER**  
USA SHADE  
1085 N. MAIN STREET, SUITE C  
ORANGE, CA 92867  
(714) 427 - 6981

### STATEMENT OF GENERAL CONFORMANCE

FOR ARCHITECTS/ENGINEERS WHO UTILIZE PLANS, INCLUDING BUT NOT LIMITED TO SHOP DRAWINGS, PREPARED BY OTHER LICENSED DESIGN PROFESSIONALS AND/OR CONSULTANTS.

THESE DRAWINGS OR SHEETS LISTED ON THE INDEX SHEET (DRAWING LIST PC 04-119454 & 02-120719) PLANS & DETAILS HAVE BEEN PREPARED BY OTHER DESIGN PROFESSIONALS OR CONSULTANTS WHO ARE LICENSED AND/OR AUTHORIZED TO PREPARE SUCH DRAWINGS IN THIS STATE. IT HAS BEEN EXAMINED BY ME FOR:

1. DESIGN INTENT AND APPEARS TO MEET THE APPROPRIATE REQUIREMENTS OF TITLE 24, CALIFORNIA CODE OF REGULATIONS AND THE PROJECT SPECIFICATIONS PREPARED BY ME, AND

2. COORDINATION WITH MY PLANS AND SPECIFICATIONS AND IS ACCEPTABLE FOR INCORPORATION INTO THE CONSTRUCTION OF THIS PROJECT.

THE STATEMENT OF GENERAL CONFORMANCE "SHALL NOT BE CONSTRUED AS RELIEVING ME OF MY RIGHTS, DUTIES, AND RESPONSIBILITIES UNDER SECTIONS 17302 AND 81138 OF THE EDUCATION CODE AND SECTIONS 4-336, 4-341 AND 4-344" OF TITLE 24, PART 1. (TITLE 24, PART 1, SECTION 4-317 (B))

I FIND THAT:  ALL DRAWINGS OR SHEETS LISTED ON THE COVER OR INDEX SHEET AND  THIS DRAWING OR PAGE

IS / ARE IN GENERAL CONFORMANCE WITH THE PROJECT DESIGN,  
AND  
HAS / HAVE BEEN COORDINATED WITH THE PROJECT PLANS AND SPECIFICATIONS.

SIGNATURE OF THE ARCHITECT \_\_\_\_\_ DATE \_\_\_\_\_  
WILLIAM JORGE AMADOR, ARCHITECT  
AMADOR WHITTLE ARCHITECTS, INC.

C-20348 \_\_\_\_\_ JANUARY 31, 2019  
LICENSE NUMBER \_\_\_\_\_ EXPIRATION DATE



VENTURA COUNTY COMMUNITY  
COLLEGE DISTRICT  
781 EAST DAILY DRIVE  
CAMARILLO, CALIFORNIA 93010  
TEL: (805) 652-5500

PROJECT TITLE AND SCHOOL LOCATION

CDC-INSTALLATION (1) PC -  
MODULAR BUILDING  
(40'X48') & (2) - PC SHADE  
STRUCTURES (30'X30')

4667 TELEGRAPH RD.  
VENTURA, CA. 93003

COMMISSIONED ARCHITECT

# AMADOR

28328 AGOURA RD. 203 | AGOURA HILLS CA, 91301 | 805-688-4334

CONSULTANT

STAMPS/SEALS

DSA BACK CHECK\_V2 SUBMITTAL 01/25/2023

ADDENDUM 01

SHEET TITLE:

TITLE SHEET

PROJECT NO: 22-VCCCD-16 PROJECT ARCH: JA

DRAWN: MC CHECKED: JA

SHEET NUMBER: 1 OF 1

DATE: 11/29/2022

# GO.00





VENTURA COUNTY COMMUNITY COLLEGE DISTRICT  
761 EAST DAILY DRIVE  
CAMARILLO, CALIFORNIA 93010  
TEL: (805) 652-5500

PROJECT TITLE AND SCHOOL LOCATION

CDC-INSTALLATION (1) PC - MODULAR BUILDING (40'X48') & (2) - PC SHADE STRUCTURES (30'X30')

4667 TELEGRAPH RD.  
VENTURA, CA. 93003

COMMISSIONED ARCHITECT

AMADÒR

2828 AGUIRRA RD. | 2031 | AGUIRRA HILLS, CA 91301 | 805-698-6384

CONSULTANT

STAMPS/SEALS



DSA BACK CHECK\_V2 SUBMITTAL 01/25/2023

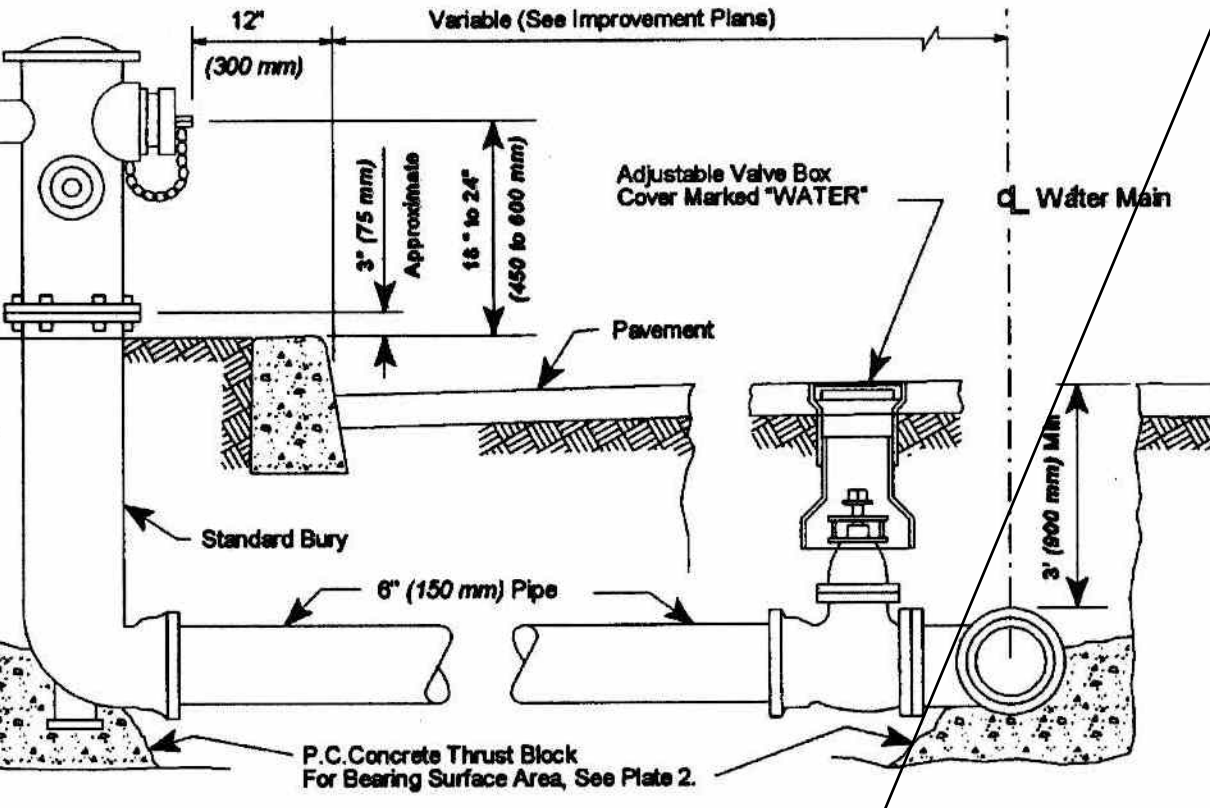
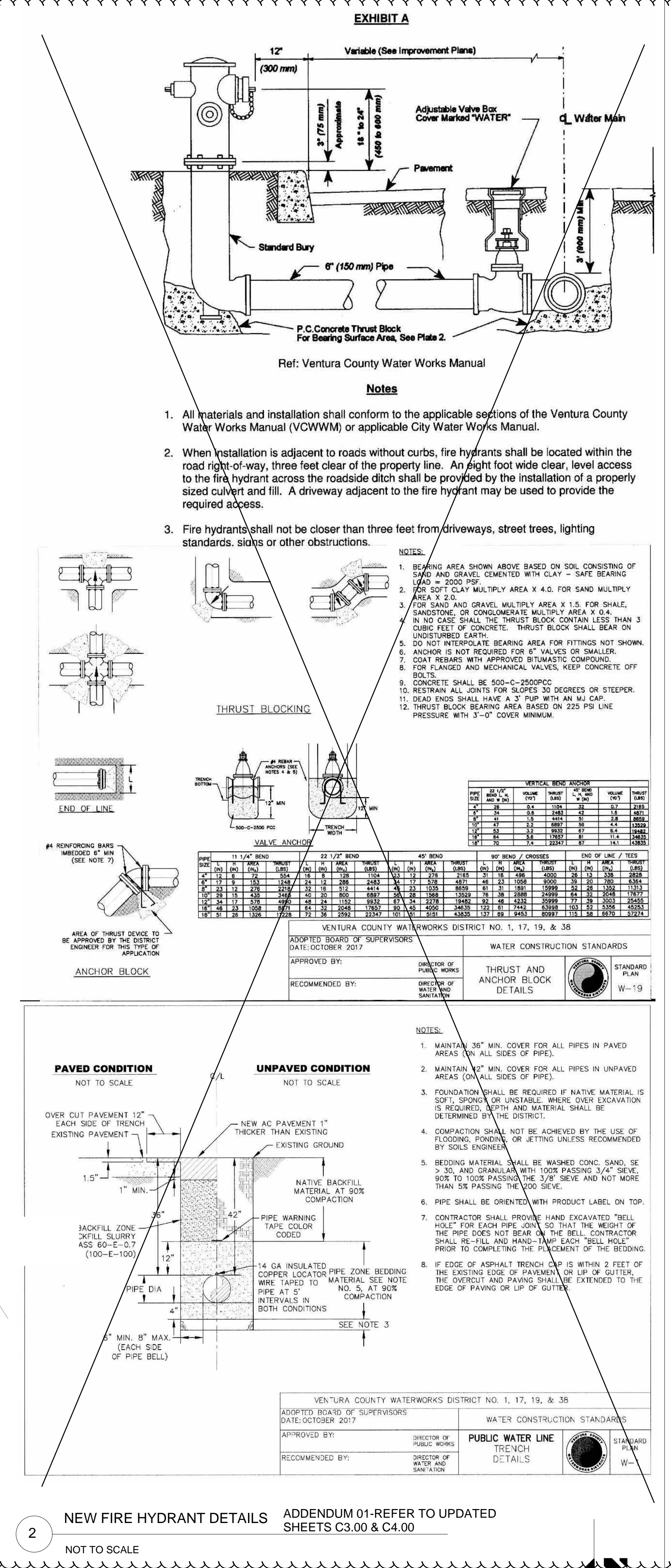
ADDENDUM 01

SHEET TITLE:

SITE PLAN

PROJECT NO: 22-VCCCD-16 PROJECT ARCH: JA  
DRAWN: MC CHECKED: Checker  
SHEET NUMBER: A0.22

DATE: 11/29/2022 SHEET: OF



Notes:  
1. All materials and installation shall conform to the applicable sections of the Ventura County Water Works Manual (VCWWM) or applicable City Water Works Manual.  
2. When installation is adjacent to roads without curbs, fire hydrants shall be located within the road right-of-way, three feet clear of the property line. An eight foot wide clear, level access to the fire hydrant across the roadside ditch shall be provided by the installation of a properly sized culvert and fill. A driveway adjacent to the fire hydrant may be used to provide the required access.  
3. Fire hydrants shall not be closer than three feet from driveways, street trees, lighting standards, signs or other obstructions.

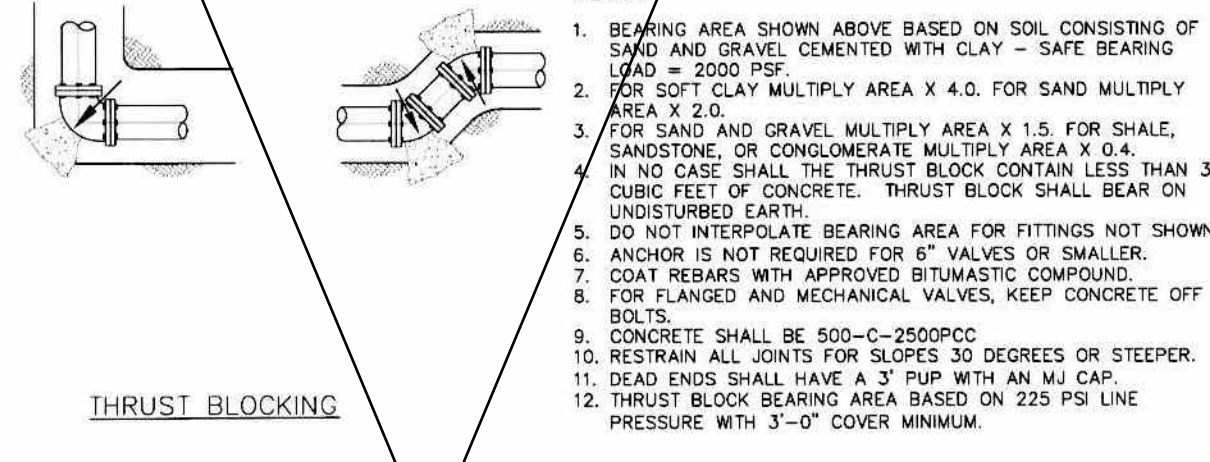
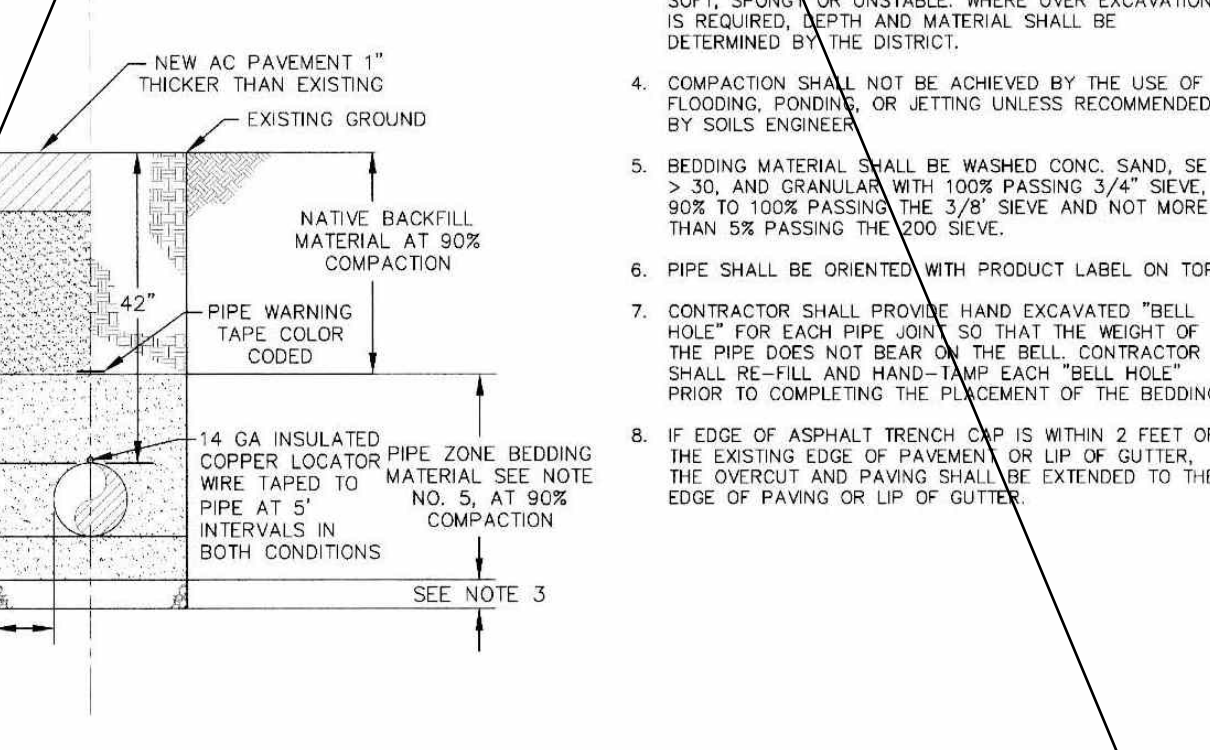


Table with 10 columns: DATE, TIME, LOCATION, COMMENTS, etc. Includes a section for 'VERTICAL BORE HOLES' with columns for DATE, TIME, LOCATION, COMMENTS, etc.

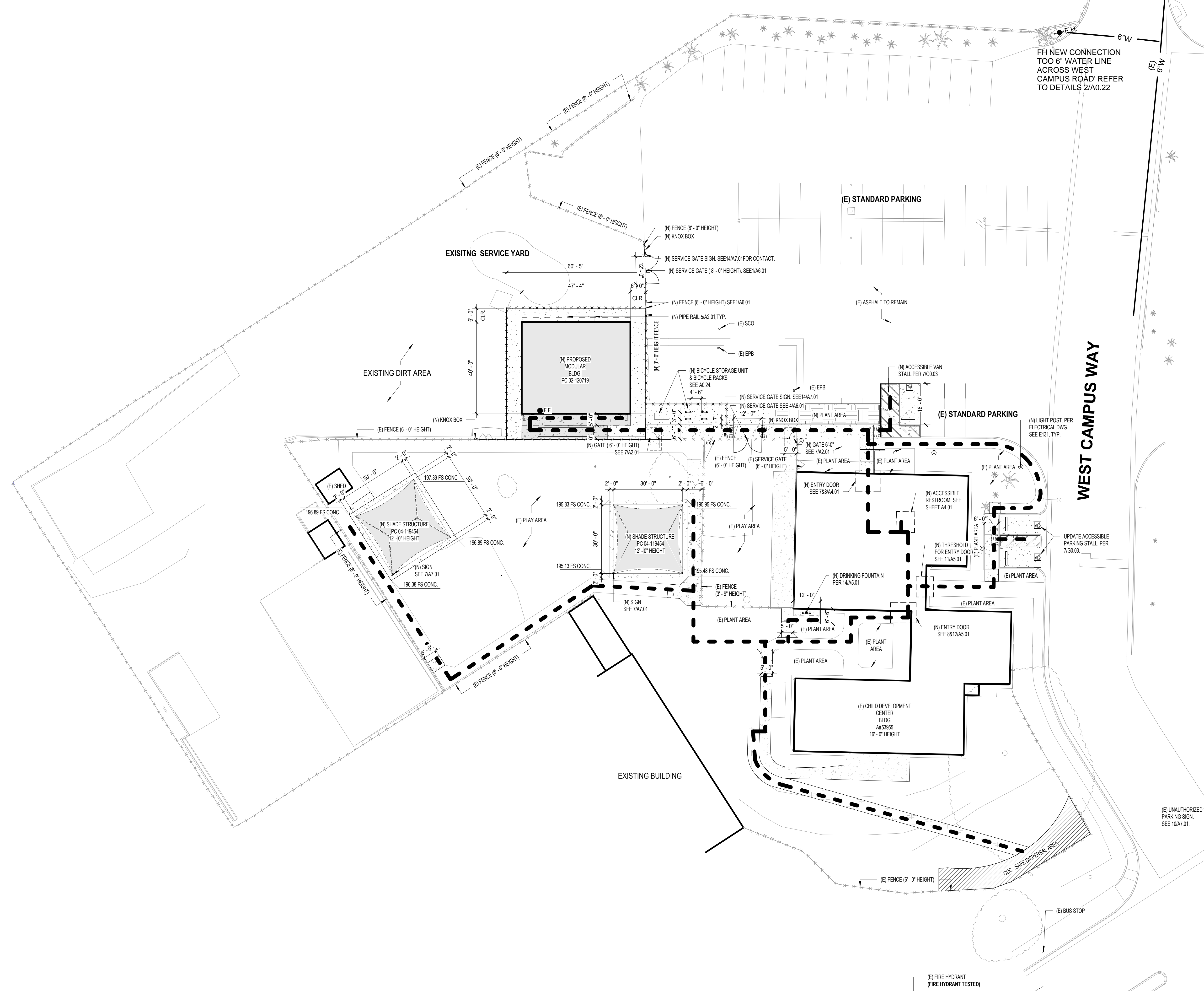
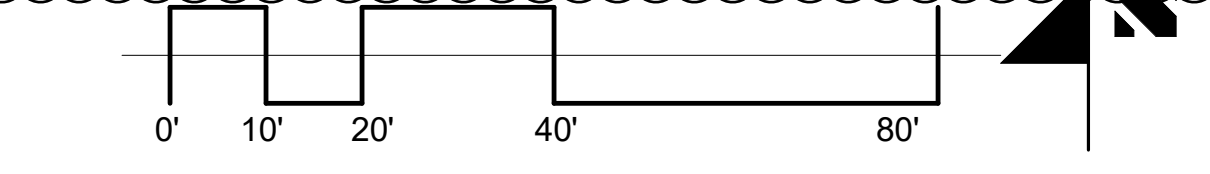
VENTURA COUNTY WATERWORKS DISTRICT NO. 1, 17, 19, & 38  
ADOPTED BOARD OF SUPERVISORS DATE: OCTOBER 2017  
APPROVED BY: DIRECTOR OF PUBLIC WORKS  
RECOMMENDED BY: DIRECTOR OF WATER SANITATION

NOTES:  
1. MAINTAIN 36" MIN. COVER FOR ALL PIPES IN PAVED AREAS (ON ALL SIDES OF PIPE).  
2. MAINTAIN 48" MIN. COVER FOR ALL PIPES IN UNPAVED AREAS (ON ALL SIDES OF PIPE).  
3. FOUNDATION SHALL BE REQUIRED IF NATIVE MATERIAL IS SOFT, SPONGY OR UNSTABLE. WHERE DEEP EXCAVATION IS REQUIRED, DEPTH AND MATERIAL SHALL BE DETERMINED BY THE DISTRICT.  
4. COMPACTION SHALL NOT BE ACHIEVED BY THE USE OF FLOODING, FLOWING, OR JETTING UNLESS RECOMMENDED BY SOILS ENGINEER.  
5. BEDDING MATERIAL SHALL BE WASHED CONC. SAND, SE 30, AND GRANULAR WITH 100% PASSING 3/4" SEIVE, 80% TO 100% PASSING THE 3/8" SEIVE AND NOT MORE THAN 5% PASSING THE 20 SEIVE.  
6. PIPE SHALL BE ORIENTED WITH PRODUCT LABEL ON TOP.  
7. CONTRACTOR SHALL PROVIDE HAND EXCAVATED "BELL HOLE" FOR EACH PIPE JOINT SO THAT THE HEIGHT OF THE PIPE DOES NOT BEAR ON THE BELL. CONTRACTOR SHALL BE FULL AND HAND-TAMP EACH "BELL HOLE" PRIOR TO COMPLETING THE PLACEMENT OF THE BEDDING.  
8. IF EDGE OF ASPHALT BENCH TOP IS WITHIN 2 FEET OF THE EXISTING EDGE OF PAVEMENT OR UP OR OUTSIDE THE EXISTING EDGE AND PAVING SHALL BE EXTENDED TO THE EDGE OF PAVING OR LIP OF GUTTER.



VENTURA COUNTY WATERWORKS DISTRICT NO. 1, 17, 19, & 38  
ADOPTED BOARD OF SUPERVISORS DATE: OCTOBER 2017  
APPROVED BY: DIRECTOR OF PUBLIC WORKS  
RECOMMENDED BY: DIRECTOR OF WATER SANITATION

NEW FIRE HYDRANT DETAILS ADDENDUM 01-REFER TO UPDATED SHEETS C3.00 & C4.00



1 PROPOSED SITE PLAN  
1" = 20'-0"

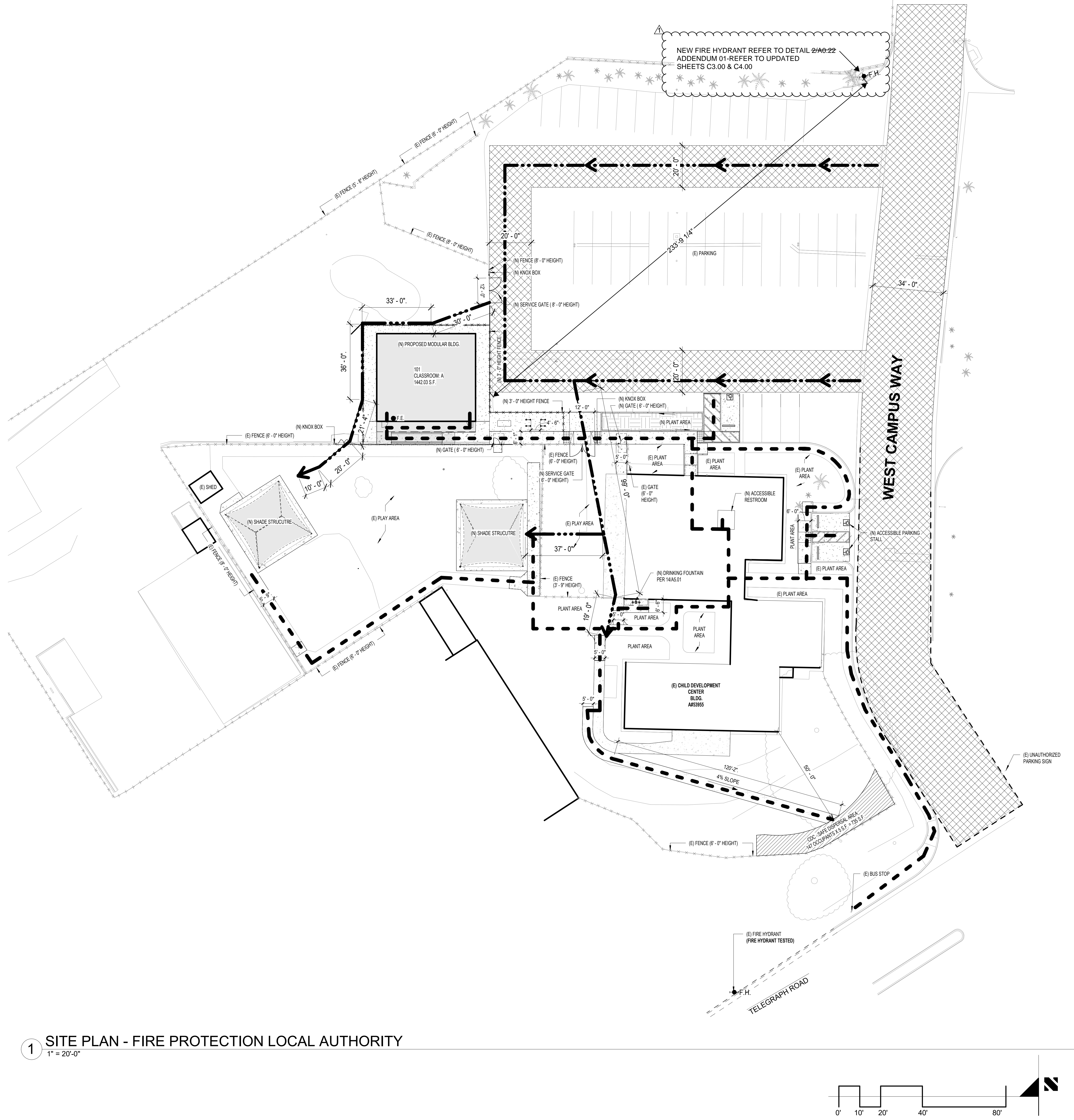
LEGEND  
F.H. FIRE HYDRANT  
BUILDING LINE  
OVERHANG  
PATH OF TRAVEL  
(N) ASPHALT PAVING  
(N) TRUNCATED DOMES  
(N) CONCRETE SIDEWALK  
AREA OF WORK  
(N) DECOMPOSED GRANITE WALK PATH  
ROOM TAG  
ROOM NO.  
ROOM NAME  
S.F. OF ROOM  
OCCUPANCY TYPE  
OCCUPANTS  
(NEW) 8'-0" FENCE/GATE  
EXISTING FENCE/GATE  
F.E. FIRE EXTINGUISHER

PATH OF TRAVEL, TECHNICAL REQUIREMENTS FOR ACCESSIBLE ROUTE  
ACCESSIBLE PATH OF TRAVEL AS INDICATED ON PLAN IS A BARRIER-FREE ACCESS ROUTE WITHOUT ABRUPT LEVEL CHANGES EXCEEDING 1/4" IF BEVELED AT 1:2 MAXIMUM SLOPE OR VERTICAL LEVEL CHANGES NOT EXCEEDING 3/4" MAXIMUM AND AT LEAST 48" IN WIDTH. SURFACE IS STABLE, FIRM, AND SLIP-RESISTANT. CROSS-SLOPE SHALL NOT BE STEEPER THAN 1:48 AND SLOPE IN THE DIRECTION OF TRAVEL SHALL NOT BE STEEPER THAN 1:20. ACCESSIBLE PATH OF TRAVEL SHALL BE MAINTAINED FREE OF OVERHANGING OBSTRUCTIONS TO 80" MINIMUM AND FREE OF OBJECTS PROTRUDING MORE THAN 4" FROM THE WALL, ABOVE 27" AND LESS THAN 80" ABOVE THE FLOOR. ARCHITECT SHALL VERIFY THAT THERE ARE NO BARRIERS IN THE PATH OF TRAVEL.

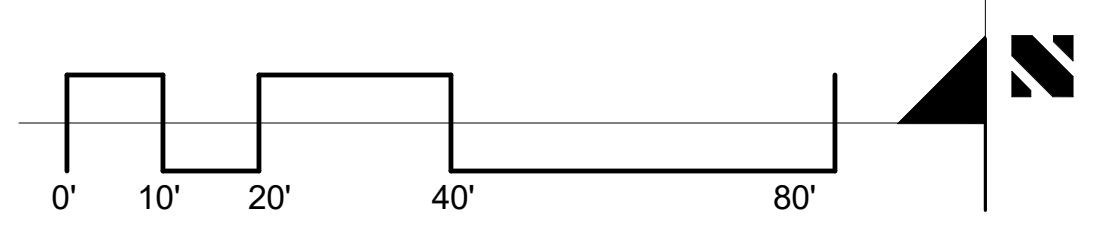
DESIGN PROFESSIONAL RESPONSIBLE CHARGE STATEMENT  
THE P.O.T. IDENTIFIED IN THESE CONSTRUCTION DOCUMENTS IS COMPLIANT WITH THE CURRENT APPLICABLE CALIFORNIA BUILDING CODE ACCESSIBILITY PROVISIONS FOR PATH OF TRAVEL REQUIREMENTS FOR ALTERATIONS, ADDITIONS AND STRUCTURAL REPAIRS. AS PART OF THE DESIGN OF THIS PROJECT, THE P.O.T. WAS EXAMINED AND ANY ELEMENTS, COMPONENTS OR PORTIONS OF THE P.O.T. THAT WERE DETERMINED TO BE NONCOMPLIANT 1) HAVE BEEN IDENTIFIED AND 2) THE CORRECTIVE WORK NECESSARY TO BRING THEM INTO COMPLIANCE HAS BEEN INCLUDED WITHIN THE SCOPE OF THIS PROJECT'S WORK THROUGH DETAILS, DRAWINGS AND SPECIFICATIONS INCORPORATED INTO THESE CONSTRUCTION DOCUMENTS. ANY NONCOMPLIANT ELEMENTS, COMPONENTS OR PORTION OF THE P.O.T. THAT WILL NOT BE CORRECTED BY THIS PROJECT BASED ON VALUATION THRESHOLD LIMITATIONS OR A FINDING OF UNREASONABLE HARSHNESS ARE SO INDICATED IN THESE CONSTRUCTION DOCUMENTS.  
DURING CONSTRUCTION, IF P.O.T. ITEMS WITHIN THE SCOPE OF THE PROJECT REPRESENTED AS CODE COMPLIANT ARE FOUND TO BE NONCONFORMING BEYOND REASONABLE CONSTRUCTION TOLERANCES, THEY SHALL BE BROUGHT INTO COMPLIANCE WITH THE CBC AS A PART OF THIS PROJECT BY MEANS OF A CONSTRUCTION CHANGE DOCUMENT.

PARKING ANALYSIS  
STANDARD STALLS 47  
ACCESSIBLE STALLS REQUIRED 2  
ACCESSIBLE VAN REQUIRED 1  
TOTAL PARKING 50  
ACCESSIBLE STALLS PROVIDED 2  
ACCESSIBLE VAN PROVIDED 1  
NOTE: NEW SHADE STRUCTURES (DSA #03-122783) DOES NOT INCREASE THE OCCUPANT LOAD OF THE CAMPUS. THEREFORE, THE TOTAL NUMBER OF EXISTING PARKING STALLS MEETS CODE REQUIREMENTS, AND NO ADDITIONAL PARKING SPACES WILL BE REQUIRED.

GENERAL NOTES  
1. ALL ITEMS SHOWN ARE EXISTING UNLESS NOTED NEW.  
2. ALL FIRE ACCESS ROADS, ACCESS GATES, FIRE HYDRANTS AND FIRE FLOW ARE (E) TO REMAIN UNMODIFIED.  
3. FOR WALKWAYS, THE SLOPE IN THE DIRECTION OF TRAVEL SHALL NOT EXCEED 1:20 GRADIENT (5.0%) AND CROSS SLOPE SHALL NOT EXCEED 1:50 GRADIENT (2.0%) WITH A MINIMUM WIDTH OF FORTY EIGHT INCHES (48"). CBC 1133B.7.3 & 1133B7.1.3  
4. REFER TO CIVIL PLANS FOR NEW CONCRETE SIDEWALK AND ASPHALT PAVING GRADES.  
5. CONTRACTOR TO PROVIDE BICYCLE STORAGE UNIT AND BIKE RACKS.



1 SITE PLAN - FIRE PROTECTION LOCAL AUTHORITY  
1" = 20'-0"



**810**  
**FIRE & LIFE SAFETY SITE CONDITIONS SUBMITTAL**

Division of the State Architect (DSA) documents referenced within this publication are available on the DSA Forms or DSA Publications webpages.  
To facilitate the Division of the State Architect's (DSA) fire and life safety plan review of project site conditions, DSA requires the design professional to provide the following information at time of project submittal for projects consisting of construction of a new campus, construction of new buildings, additions to existing buildings, and for site alternate design means for the department emergency vehicle access, and fire suppression water supply. Information associated with compliance items 1 through 3 below is to be provided for all project types indicated above. Information associated with items 4 through 7 is to be completed when an alternate means is utilized. Acknowledgment by the school district and signature from the Local Fire Authority (LFA) is only required when an alternate design means is being requested.  
The Project Information and Fire & Life Safety Information sections are to be completed for all projects and mapped onto the fire access site plan. When an alternate design is proposed, all sections on pages 1 and 2 are to be completed and mapped on the fire access site plan.  
For additional information refer to the Instructions at the end of this form and DSA Policy PL 08-01: Fire Flow for Buildings.

DSR DSA 910 (revised 10/2020) DIVISION OF THE STATE ARCHITECT DEPARTMENT OF GENERAL SERVICES STATE OF CALIFORNIA Page 1 of 4

2 810 DSA DOCUMENT

10142022 City of Ventura Water Loss Meter

FOR CODE

Fire Flow

Responder: Jacob Coffman

Station Pressure

Line Reading

Differential Pressure

Flow at Head

Outlet Pressure Second

Hydrant Main Diameter (inches)

Galometer Reading

Minutes of Pressure Loss

TOTAL GALLONS

Handbook of Cubic Feet

Fire Flow

CC Fire Customer Service Water Loss Meter

**810**  
**FIRE & LIFE SAFETY SITE CONDITIONS SUBMITTAL**

CONDITION MEANS AND METHODS RESOLUTION	ALTERNATE ACCEPTED
4. Emergency vehicle access roadways do not meet CFC requirements.	Yes <input type="checkbox"/> No <input checked="" type="checkbox"/>
5. Fire Hydrants: Number and spacing does not meet CFC requirements.	Yes <input type="checkbox"/> No <input checked="" type="checkbox"/>
6. Fire Hydrants: Water flow and pressure are less than CFC minimum.	Yes <input type="checkbox"/> No <input checked="" type="checkbox"/>
7a. Acceptable Alternative: The location of fire department connection serving the fire hydrant system is not acceptable for providing fire suppression and protection of life and property.	Yes <input type="checkbox"/> No <input checked="" type="checkbox"/>
7b. Acceptable Alternative: The location of fire department connection serving the fire hydrant system is not acceptable for providing fire suppression and protection of life and property.	Yes <input type="checkbox"/> No <input checked="" type="checkbox"/>

School District Acceptance of Acceptable Design Alternatives

I, \_\_\_\_\_, Title \_\_\_\_\_, Date \_\_\_\_\_, accept the proposed design as information to California Building Code (CBC) and California Fire Code (CFC) minimum requirements, as indicated by one or more of the conditions indicated at items 4, 5a, 5b, 6a or 7a, for providing the fire and life safety protection of life and property.

LOCAL FIRE AUTHORITY (LFA) INFORMATION

LFA Agency Name \_\_\_\_\_

LFA Review Officer \_\_\_\_\_

Title \_\_\_\_\_ Work Phone \_\_\_\_\_

Work Email \_\_\_\_\_

LFA Reviewer's Signature \_\_\_\_\_ Date \_\_\_\_\_

DSR DSA 910 (revised 10/2020) DIVISION OF THE STATE ARCHITECT DEPARTMENT OF GENERAL SERVICES STATE OF CALIFORNIA Page 1 of 4

3 FIRE FLOW TEST

Hydrant Flow Calculations

Flow @ 20 PSI

Flow At 20psi 6,228.03 GPM

Flow During Test 1,505.17 GPM

Static Pressure 103.00 PSI

Residual Pressure 103.00 PSI

Desired Pressure for Flow 20.00 PSI

Observed Flow From Pitot PSI

Observed Flow 1,453.37 GPM

Outlet Coefficient 0.91

Outlet Size (inches) 2.5 inches

Pitot Size (inches) 0.75 inches

Outlet Coefficients (Typical)

0.90 - Smooth and Rounded

0.80 - Square and Sharp

0.70 - Square and Projecting

**FIRE DEPARTMENT GENERAL NOTE**

1. PORTABLE FIRE EXTINGUISHER SHALL BE PROVIDED. TRAVEL DISTANCE TO ANY EXTINGUISHER SHALL NOT EXCEED 75 FEET FROM ANY PORTION OF THE BUILDING. EXTINGUISHER (S) SHALL BE HUNG NO HIGHER THAN 44 INCHES MEASURED FROM THE FLOOR TO THE TOP OF THE EXTINGUISHER. SHALL NOT CONTAIN CFCS OR HALONS.

**LEGEND**

- PATH OF TRAVEL
- (N) ASPHALT PAVING
- (N) TRUNCATED DOMES
- (N) CONCRETE SIDEWALK
- AREA OF WORK
- FIRE LANE
- ←●●●● FIRE ACCESS
- ←●●●● VEHICULAR FIRE ACCESS
- BUILDING LINE
- - - OVERHANG
- ⊙ F.H. FIRE HYDRANT
- ××××× (NEW) 8' - 0" FENCE/GATE
- ××××× EXISTING FENCE/GATE
- F.E. FIRE EXTINGUISHER
- DISPERSAL AREA
- (N) DECOMPOSED GRANITE WALK PATH

IDENTIFICATION STAMP  
DIV. OF THE STATE ARCHITECT  
APP: 03-122783 INC.  
REVIEWED FOR  
SS  FLS  ACS   
DATE: 04/19/2023



VENTURA COUNTY COMMUNITY COLLEGE DISTRICT  
761 EAST DAILY DRIVE  
CAMARILLO, CALIFORNIA 93010  
TEL: (805) 652-5500

PROJECT TITLE AND SCHOOL LOCATION

**CDC-INSTALLATION (1) PC - MODULAR BUILDING (40'X48') & (2) - PC SHADE STRUCTURES (30'X30')**  
4667 TELEGRAPH RD.  
VENTURA, CA. 93003

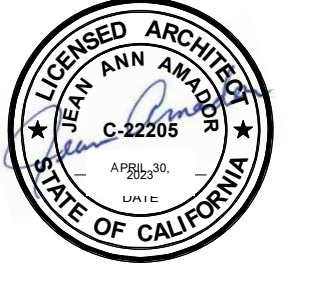
COMMISSIONED ARCHITECT

**AMADOR**

2828 AGOURA RD. 201 | AGOURA HILLS CA, 91501 | 805-698-4334

CONSULTANT

STAMPS/SEALS



DSA BACK CHECK\_V2 SUBMITTAL 01/25/2023

ADDENDUM 01

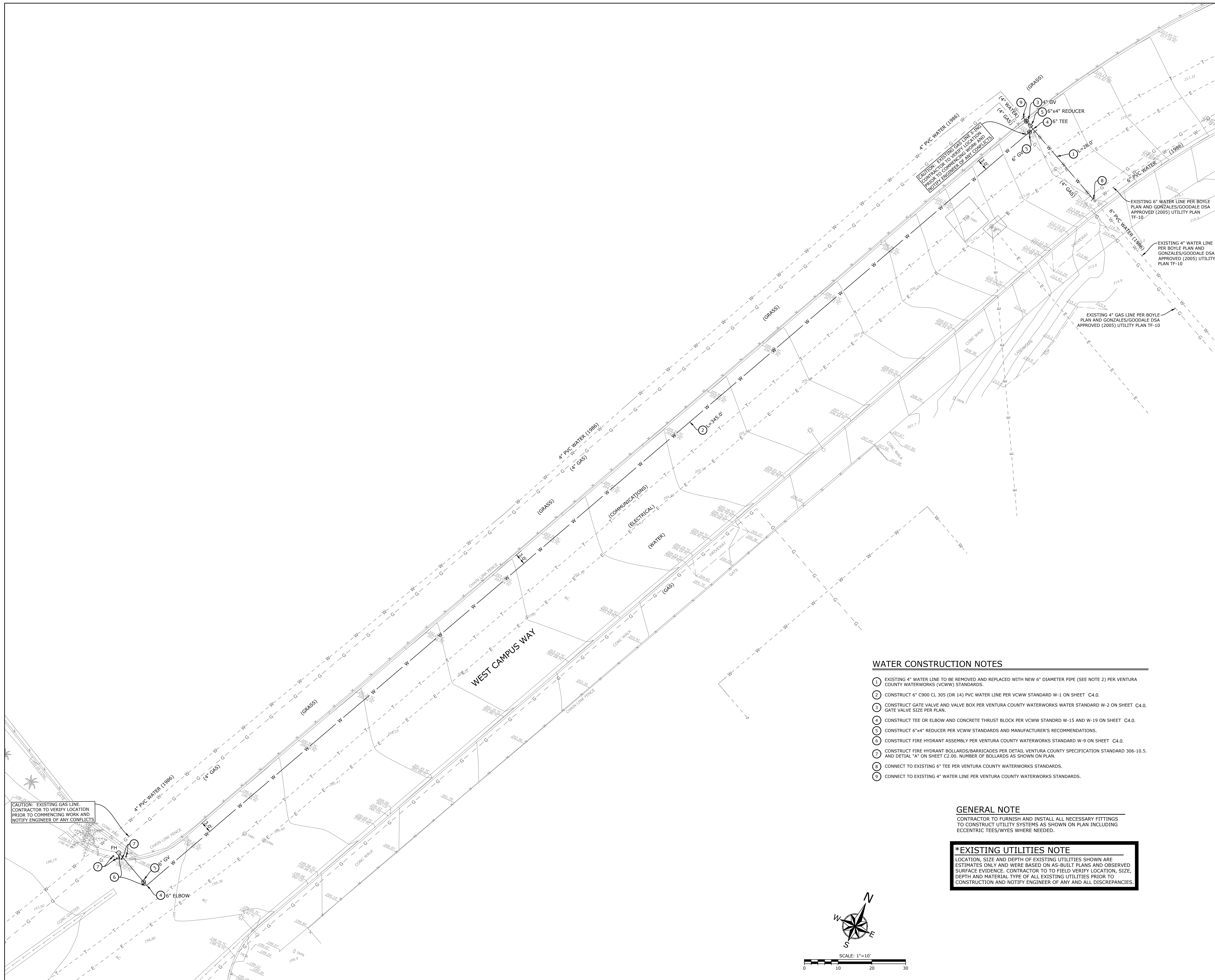
SHEET TITLE:

**LOCAL FIRE AUTHORITY SITE PLAN**

PROJECT NO: 22-VCCCD-16 PROJECT ARCH: JA  
DRAWN: MC CHECKED: JA

SHEET NUMBER: **FP0.01** OF

DATE: 11/29/2022



**WATER CONSTRUCTION NOTES**

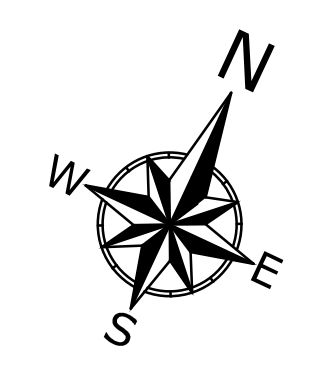
- 1 EXISTING 4" WATER LINE TO BE REMOVED AND REPLACED WITH NEW 6" DIAMETER PIPE (SEE NOTE 2) PER VENTURA COUNTY WATERWORKS (VCWW) STANDARDS.
- 2 CONSTRUCT 6" C900 CL 305 (DR 14) PVC WATER LINE PER VCWW STANDARD W-1 ON SHEET C4.0.
- 3 CONSTRUCT GATE VALVE AND VALVE BOX PER VENTURA COUNTY WATERWORKS WATER STANDARD W-2 ON SHEET C4.0. GATE VALVE SIZE PER PLAN.
- 4 CONSTRUCT TEE OR ELBOW AND CONCRETE THRUST BLOCK PER VCWW STANDRD W-15 AND W-19 ON SHEET C4.0.
- 5 CONSTRUCT 6"x4" REDUCER PER VCWW STANDARDS AND MANUFACTURER'S RECOMMENDATIONS.
- 6 CONSTRUCT FIRE HYDRANT ASSEMBLY PER VENTURA COUNTY WATERWORKS STANDARD W-9 ON SHEET C4.0.
- 7 CONSTRUCT FIRE HYDRANT BOLLARDS/BARRICADES PER DETAIL VENTURA COUNTY SPECIFICATION STANDARD 306-10.5. AND DETAIL "A" ON SHEET C2.00. NUMBER OF BOLLARDS AS SHOWN ON PLAN.
- 8 CONNECT TO EXISTING 6" TEE PER VENTURA COUNTY WATERWORKS STANDARDS.
- 9 CONNECT TO EXISTING 4" WATER LINE PER VENTURA COUNTY WATERWORKS STANDARDS.

**GENERAL NOTE**

CONTRACTOR TO FURNISH AND INSTALL ALL NECESSARY FITTINGS TO CONSTRUCT UTILITY SYSTEMS AS SHOWN ON PLAN INCLUDING ECCENTRIC TEES/WYES WHERE NEEDED.

**\*EXISTING UTILITIES NOTE**

LOCATION, SIZE AND DEPTH OF EXISTING UTILITIES SHOWN ARE ESTIMATES ONLY AND WERE BASED ON AS-BUILT PLANS AND OBSERVED SURFACE EVIDENCE. CONTRACTOR TO TO FIELD VERIFY LOCATION, SIZE, DEPTH AND MATERIAL TYPE OF ALL EXISTING UTILITIES PRIOR TO CONSTRUCTION AND NOTIFY ENGINEER OF ANY AND ALL DISCREPANCIES.



**VENTURA COUNTY COMMUNITY COLLEGE DISTRICT**  
 761 EAST DAILY DRIVE  
 CAMARILLO, CALIFORNIA 93010  
 TEL: (805) 652-5500

PROJECT TITLE AND SCHOOL LOCATION

**CHILD DEVELOPMENT CENTER - FIRE WATER LINE EXTENSION AND FIRE HYDRANT**

4667 TELEGRAPH ROAD  
 VENTURA, CA 93003

COMMISSIONED ARCHITECT

**AMADÒR**

2828 AGOURA RD, 203 | AGOURA HILLS CA, 91301 | 805-958-4334

CONSULTANT



STAMPS/SEALS



ADDENDUM 01 - ADDED SHEET

SHEET TITLE:

**FIRE WATER & HYDRANT PLAN**

PROJECT NO.: 227 PROJECT ARCH: -  
 DRAWN: FB CHECKED: GHP

**C3.00**

DATE: 06/21/2023 SHEET: 3 OF 4

**WATER & SANITATION CONSTRUCTION STANDARDS** **DRAWING W-1**

**PAVED CONDITION**  
NOT TO SCALE

**UNPAVED CONDITION**  
NOT TO SCALE

**NOTES:**

- MAINTAIN 36" MIN. COVER FOR ALL PIPES IN PAVED AREAS (ON ALL SIDES OF PIPE).
- MAINTAIN 42" MIN. COVER FOR ALL PIPES IN UNPAVED AREAS (ON ALL SIDES OF PIPE).
- FOUNDATION SHALL BE REQUIRED IF NATIVE MATERIAL IS SOFT, SPONGY OR UNSTABLE, WHERE OVER EXCAVATION IS REQUIRED, DEPTH AND MATERIAL SHALL BE DETERMINED BY THE DISTRICT.
- COMPACTION SHALL NOT BE ACHIEVED BY THE USE OF FLOODING, PONDING, OR SETTING UNLESS RECOMMENDED BY SOIL ENGINEERS AND APPROVED BY DISTRICT.
- BEDDING MATERIAL SHALL BE WASHED CONC. SAND, SE > 30, AND GRANULAR WITH 100% PASSING 3/4" SIEVE, 90% TO 100% PASSING THE 3/8" SIEVE AND NOT MORE THAN 0% PASSING THE 200 SIEVE.
- PIPE SHALL BE ORIENTED WITH PRODUCT LABEL ON TOP.
- CONTRACTOR SHALL PROVIDE HAND EXCAVATED "BELL HOLE" FOR EACH PIPE JOINT SO THAT THE WEIGHT OF THE PIPE DOES NOT BEAR ON THE BELL. CONTRACTOR SHALL RE-TAMP AND HAND-TAMP EACH "BELL HOLE" PRIOR TO COMPLETING THE PLACEMENT OF THE BEDDING.
- IF EDGE OF ASPHALT TRENCH CAP IS WITHIN 2 FEET OF THE EXISTING EDGE OF PAVEMENT OR LIP OF CUTTER, THE OVERCUT AND PAVING SHALL BE EXTENDED TO THE EDGE OF PAVING OR LIP OF CUTTER.
- ALL BELOW GRADE PIPE INSTALLATIONS SHALL BE WRAPPED WITH 10 MIL POLYETHYLENE CASING.

ADOPTED BY BOARD OF SUPERVISORS: 02-28-2023		COUNTY OF VENTURA PUBLIC WORKS AGENCY	
REVISION DATE:	DESCRIPTION:	APPROVED:	
		JP	PWA DIRECTOR
		RECOMMENDED:	JP
		JP	WAS DIRECTOR

**TRENCH DETAILS**

**WATER & SANITATION CONSTRUCTION STANDARDS** **DRAWING W-9**

**CONSTRUCTION NOTES:**

- USE ZINC PLATED, DRILLED BREAK-AWAY BOLTS (BOLT PAGING UP) WITH SILICONE SEALANT. HYDRANT GASKETS SHALL BE FULL FACE AND RUBBER COMPOSITION.
- BREAK-AWAY SPOOLS NOT ALLOWED FOR INSTALLATIONS WITH CONCRETE PAD. USE EXTENSION SPOOLS IF NEEDED.
- THRUST BLOCK PER DWG NO. W-19.
- 8" FLG X MJ DI BURY.
- 8" RESILIENT WEDGE GATE VALVE, FLG X MJ WITH RESTRAINT.
- IF THE STATIC WATER PRESSURE AT THE POINT OF HYDRANT INSTALLATION EXCEEDS 130 PSIG, PIPE SHALL BE CLASS 52 D.I.P.
- ALL JOINTS AND FITTINGS SHALL BE RESTRAINED.
- DETECTABLE TAPE AND TRACER WIRE PER DWG NO.1.
- (MAIN SIZE) MJ X 6" FLG DI TEE.

ADOPTED BY BOARD OF SUPERVISORS: 02-28-2023		COUNTY OF VENTURA PUBLIC WORKS AGENCY	
REVISION DATE:	DESCRIPTION:	APPROVED:	
		JP	PWA DIRECTOR
		RECOMMENDED:	JP
		JP	WAS DIRECTOR

**FIRE HYDRANT INSTALLATION**

**WATER & SANITATION CONSTRUCTION STANDARDS** **DRAWING W-19**

**CONSTRUCTION NOTES:**

- NO. 4 REBARS EMBEDDED 6" MIN. (SEE NOTE 8)

ADOPTED BY BOARD OF SUPERVISORS: 02-28-2023		COUNTY OF VENTURA PUBLIC WORKS AGENCY	
REVISION DATE:	DESCRIPTION:	APPROVED:	
		JP	PWA DIRECTOR
		RECOMMENDED:	JP
		JP	WAS DIRECTOR

**THRUST AND ANCHOR BLOCK DETAILS**

**WATER & SANITATION CONSTRUCTION STANDARDS** **DRAWING W-2**

**CONSTRUCTION NOTES:**

- IDENTIFICATION WIRE TO BE ATTACHED MECHANICALLY TO TEE, VALVE AND TOP OF VALVE STACK.
- IF DEPTH FROM SURFACE TO THE TOP OF VALVE OPERATING NUT IS GREATER THAN 42", A 6" DIA., SDR-35 VALVE BOX EXTENSION SHALL BE INSTALLED (MIN. 12" OR GREATER).
- VALVE COVER SHALL HAVE "WATER" FOR POTABLE WATER AND RECYCLED WATER SHALL HAVE "REUSE" IN RAISED LETTERS. RECYCLED WATER COVERS SHALL BE PAINTED PURPLE.
- IF DEPTH FROM SURFACE TO TOP OF VALVE OPERATING NUT IS GREATER THAN 48", INSTALL AN 1/4" SQUARE SOLID STEEL STOCK FOR VALVE STEM EXTENSION.
- PROVIDE 2" GAP BETWEEN BOTTOM OF VALVE BOX AND TOP OF VALVE.
- 24" DIA. X 6" THICK CONCRETE COLLAR.

**NOTES:**

- NON-RESIDENTIAL ROADS OR WHERE POSTED SPEED LIMIT EXCEEDS 25 MPH REQUIRES HEAVY 25 LB VALVE COVER.

ADOPTED BY BOARD OF SUPERVISORS: 02-28-2023		COUNTY OF VENTURA PUBLIC WORKS AGENCY	
REVISION DATE:	DESCRIPTION:	APPROVED:	
		JP	PWA DIRECTOR
		RECOMMENDED:	JP
		JP	WAS DIRECTOR

**VALVE BOX INSTALLATION**

**WATER & SANITATION CONSTRUCTION STANDARDS** **DRAWING W-9**

**CONSTRUCTION NOTES:**

- ALL REBAR SHALL BE NO. 4 @ 12" O.C. CONCRETE BLOCK MAY BE SUBSTITUTED FOR WALL SECTION. CONSULT LOCAL BUILDING AND SAFETY FOR ALL WALLS HIGHER THAN 30". CONSULT LOCAL AUTHORITY FOR SIDEWALK BUMP-OUT IN CONDITION 2.
- BARRICADES SHALL CONFORM TO VCSS SECTION 306-10.5.
- LOCATION OF FRONT BARRICADES SHALL BE ADJUSTED TO PROVIDE CLEARANCE FOR DISCHARGE PIPING.

ADOPTED BY BOARD OF SUPERVISORS: 02-28-2023		COUNTY OF VENTURA PUBLIC WORKS AGENCY	
REVISION DATE:	DESCRIPTION:	APPROVED:	
		JP	PWA DIRECTOR
		RECOMMENDED:	JP
		JP	WAS DIRECTOR

**FIRE HYDRANT INSTALLATION**

**WATER & SANITATION CONSTRUCTION STANDARDS** **DRAWING W-19**

**CONSTRUCTION NOTES:**

- THRUST BLOCK BEARING AREA BASED ON SOIL CONSISTING OF SAND AND GRAVEL, CEMENTED WITH CLAY (SAFE BEARING LOAD OF 2000 PSF), MINIMUM 200 PSI WATER PRESSURE, AND 3"-5" COVER MINIMUM.
- PRIOR TO INSTALLATION, BEARING LOAD OF UNDISTURBED NATIVE SOIL AND WATER TEST PRESSURE MUST BE CONSIDERED.
- IN NO CASE SHALL THE THRUST BLOCK CONTAIN LESS THAN 3 CUBIC FEET OF CONCRETE.
- THRUST BLOCK SHALL BEAR SOLIDLY AGAINST FIRM UNDISTURBED EARTH.
- DO NOT INTERPOLATE BEARING AREA FOR PIPE SIZE OR FITTINGS NOT SHOWN.
- THE THRUST BLOCK HEIGHT (H) TO LENGTH (L) RATIO SHALL BE MAINTAINED AT MINIMUM 1:2 BUT NOT EXCEED MAXIMUM 1:1.
- ANCHOR BLOCK IS NOT REQUIRED FOR 6" VALVES OR SMALLER.
- COAT REBARS WITH APPROVED BITUMASTIC COMPOUND.
- FOR FLANGED AND MECHANICAL VALVES, KEEP CONCRETE OFF BOLTS.
- CONCRETE SHALL BE 560-C-3250.
- RESTRAINT ALL JOINTS FOR SLOPES 30 DEGREES OR STEEPER.
- DEAD ENDS SHALL HAVE A 3" PUP WITH A RESTRAINED MJ CAP.
- PROTECT ALL JOINTS FROM POTENTIAL CONCRETE INFILTRATION AND OR ENCASMENT.

ADOPTED BY BOARD OF SUPERVISORS: 02-28-2023		COUNTY OF VENTURA PUBLIC WORKS AGENCY	
REVISION DATE:	DESCRIPTION:	APPROVED:	
		JP	PWA DIRECTOR
		RECOMMENDED:	JP
		JP	WAS DIRECTOR

**THRUST AND ANCHOR BLOCK DETAILS**

**WATER & SANITATION CONSTRUCTION STANDARDS** **DRAWING W-15**

**CONSTRUCTION NOTES:**

- EXISTING PIPE.
- TRANSITION COUPLING (ROMAC OR EQUIVALENT).
- 3" SECTION, PVC C-900 DR 14 (NO BEVEL END).
- MAIN SIZE-IN LINE VALVE, FLG X MJ WITH RESTRAINT.
- TEE, MAIN SIZE X LATERAL SIZE, FLG X FLG.
- LATERAL VALVE, FLG X MJ WITH RESTRAINT.
- LATERAL PIPE.
- TEE, MAIN SIZE X LATERAL SIZE, MJ X FLG.

ADOPTED BY BOARD OF SUPERVISORS: 02-28-2023		COUNTY OF VENTURA PUBLIC WORKS AGENCY	
REVISION DATE:	DESCRIPTION:	APPROVED:	
		JP	PWA DIRECTOR
		RECOMMENDED:	JP
		JP	WAS DIRECTOR

**CUT-IN TEE FOR PVC, AC, AND DI PIPE**

**WATER & SANITATION CONSTRUCTION STANDARDS** **DRAWING W-15**

**CONSTRUCTION NOTES:**

- EXISTING PIPE.
- SOLID DUCTILE IRON MJ SLEEVE WITH RESTRAINT.
- 3" SECTION, PVC C-900 DR-14 (NO BEVEL END).
- MAIN SIZE-IN LINE VALVE, FLG X MJ WITH RESTRAINT.
- TEE, MAIN SIZE X LATERAL SIZE, FLG X FLG.
- LATERAL VALVE, FLG X MJ WITH RESTRAINT.
- LATERAL PIPE.
- TEE, MAIN SIZE X LATERAL SIZE, MJ X FLG.

ADOPTED BY BOARD OF SUPERVISORS: 02-28-2023		COUNTY OF VENTURA PUBLIC WORKS AGENCY	
REVISION DATE:	DESCRIPTION:	APPROVED:	
		JP	PWA DIRECTOR
		RECOMMENDED:	JP
		JP	WAS DIRECTOR

**CUT-IN TEE FOR PVC, AC, AND DI PIPE**

**WATER & SANITATION CONSTRUCTION STANDARDS** **DRAWING W-19**

**CONSTRUCTION NOTES:**

- BOLLARDS SHALL BE SPACED AT 4' MAX ON CENTER.
- BOLLARDS SHALL BE LOCATED NOT LESS THAN 3' FROM THE PROTECTED OBJECT.

ADOPTED BY BOARD OF SUPERVISORS: 02-28-2023		COUNTY OF VENTURA PUBLIC WORKS AGENCY	
REVISION DATE:	DESCRIPTION:	APPROVED:	
		JP	PWA DIRECTOR
		RECOMMENDED:	JP
		JP	WAS DIRECTOR

**FIRE HYDRANT BARRICADE/BOLLARD DETAIL**

DIVISION OF THE STATE ARCHITECT

**VENTURA COUNTY COMMUNITY COLLEGE DISTRICT**  
761 EAST DAILY DRIVE  
CAMARILLO, CALIFORNIA 93010  
TEL: (805) 652-5500

**CHILD DEVELOPMENT CENTER - FIRE WATER LINE EXTENSION AND FIRE HYDRANT**

4667 TELEGRAPH ROAD  
VENTURA, CA 93003

COMMISSIONED ARCHITECT

**AMADOR**

3828 AGOURA RD, 203 | AGOURA HILLS CA, 91301 | 805-668-0384

CONSULTANT

Enccompass Consultant Group  
333 N. LANTANA ST., SUITE 201, CAMARILLO, CA 93010  
PHONE: 805-322-4443 | WEBSITE: WWW.ECGVIL.COM

STAMPS/SEALS

**DETAILS**

ADDENDUM 01 - ADDED SHEET

SHEET TITLE:

**C4.00**

DATE: 06/21/2023 SHEET: 4 OF 4