



Ventura County Community College District

PURCHASING DEPARTMENT

DATE: 08/02/2024
TO: All Bidders
FROM: David Cienfuegos, Purchasing Specialist
SUBJECT: Addendum 1 – Bid 677 Ventura College Admin Building Landscaping

This addendum is hereby made part of the Contract Documents to the same extent as though it was originally included therein and takes precedence over the original documents. The outdated pages must be replaced with any updated and/or changed pages when submitting your bid. Acknowledge receipt of all addenda on the Bid Form.

The bid opening remains on **Wednesday, August 14th, 2024**. Bids must be received no later than **3:00 p.m.** at 761 E Daily Drive, Suite 200, Camarillo, CA 93010. Properly mark the outside of the exterior envelope on your submitted bid with the Bid Number and Name according to the requirements stated in the bid packet directions.

If you choose not to participate in this particular bid, please sign the Bid Proposal stating “no bid” and email or fax it back to me at 805-652-7700.

It is the responsibility of the Bidder to verify that their proposal has been received by the VCCCD Purchasing Department prior to the opening date. Verification of receipt can be made through the listed Purchasing Specialist.

Attached to this addendum please find updated technical specifications drawings and the following notes:

A. Specifications

1. Section 32 12 23 Tactile Warning Strips added.
2. Section 32 90 20 Landscape Maintenance, Para 1.03, typo correction: SVUSD changed to VCCCD.
3. Section 32 93 15 Landscaping Planting, para 2.01 G revised: Mulch shall be 3/8” del-rio rock, two inches thick.

B. Drawings

1. L2.1 Landscape and Misc Removals
 - a. Revisions at existing flag pole area including: Slab and footing removal under guard station, removal of soil and preparation of subgrade for new concrete paving around existing flag pole, existing curb saw cutting and removal for new curb ramp installation.



Ventura County Community College District

PURCHASING DEPARTMENT

- b. Clarification of soil removal adjacent to walks and walls for the installation of two-inch layer of rock mulch.
 - c. Clarification of Key Notes as related to installation of rock mulch.
 - d. Clarification of soil removals for rock mulch installation.
 - e. Added Key Note no. 9 to fix a leaking ball valve in a two inch potable water line.
2. L3.1 Irrigation Plan:
 - a. Revision of irrigation shrub bubblers around the revised planting at the existing flagpole area.
 3. L4.1 Landscaping Renovation Plan:
 - a. New concrete paving and curb ramp added to the area around the existing flagpole area.
 - b. Clarification of plant legend. Revisions noted.
 - c. Clarification of rock mulch, a two inch layer of rock mulch is to be installed throughout all planting areas.

C. Attachments:

1. Section 32 17 23 Tactile Warning Strips
2. Section 32 90 20 Landscaping Maintenance
3. Section 32 93 15 Landscape Planting
4. L3.1 Admin Removals
5. L4.1 Admin Planting Plan

The following information is in answer to questions that were asked at the job walk and via email request. The deadline for questions was Monday, July 29th, 2024 at 5:00 P.M. No further questions will be accepted.

- 1) Can the prime contractor license requirement be revised to include C-27 license holders?
 - a. No. Scope includes work beyond landscape systems, including pavement demolition, concrete placement, and handrails.
- 2) Ref: Drawing L4.1, Sheet 5. There is a callout for 20 x 5 gal Coprosma X. Kirkii variegata plants, the matching symbol in the legend references Cotoneaster "Coral



Ventura County Community College District

PURCHASING DEPARTMENT

Beauty”. Please confirm the plant type.

- a. The legend is correct, install “Cotoneaster “Coral Beauty”. Also at the ADM Building main entry planters, there is a callout for “5-5 GAL MAHONIA LAMARIIFOLIA” but no shown on the legend which is required as part of the contract. Reference updated clouded Sheet L4.1 Admin Planting Plan.
- 3) Where will our staging area be?
 - a. Site logistics plan needs to be submitted and approved. This plan can be coordinated during the preconstruction meeting once the project is awarded. Maintain vehicular and pedestrian path of travel at all times.
- 4) Will any temp fencing?
 - a. Temporary fencing is required around all scopes of work. Site logistics plan needs to be submitted and approved. This plan can be coordinated during the preconstruction meeting once the project is awarded. Maintain vehicular and pedestrian path of travel at all times.
- 5) What are the liquidated damages?
 - a. Reference Section 00800 1.02 Liquidated Damages.
- 6) What is the engineer’s estimate?
 - a. \$150,000.00
- 7) What is the anticipated start date?
 - a. Start date will be after the September 2024 Board of Trustees meeting.
- 8) On 1.03 Insurance, Section A.6 regarding the Excess products and Completed Operations amount of \$2 million: Can this coverage be satisfied through the limits on our Umbrella Policy, or is a specific endorsement required?
 - a. A specific endorsement will be required.
- 9) Will a post installation maintenance period be required? If so, how many days?
 - a. Ninety-day (90) maintenance period, reference added specification Section 32 90 20 Landscape Maintenance.
- 10) Planter east of the Educational Assistance Center on sheet L4.1 indicates to install weed barrier without mulch. Please advise if no topdressing with either bark or rock mulch is required.



Ventura County Community College District

PURCHASING DEPARTMENT

- a. Topdressing to be 2” thick include Del-Rio 3/8 inch rock, reference updated Sheet L4.1 and spec Section 32 93 15.
- 11) Will all bare planting areas not receiving rock mulch need bark mulch? If so, what depth and what type of mulch?
 - a. Topdressing to be 2” thick include Del-Rio 3/8 inch rock, reference updated Sheet L4.1 and spec section 32 93 15.
 - 12) Will we be allowed to use a concrete truck on the north walkway?
 - a. Yes, the concrete truck must remain on the concrete paving and a pump may be utilized as needed. Coordination of logistics is required to avoid property damage and ensure pedestrian safety. All concrete surfaces to be cleaned and restored should there be damage. Concrete cannot be staged on landscape areas outside of the project limit or laydown area.
 - 13) On L2.1, Keynote #5 indicates to remove existing house bib and replace per irrigation plan. On L3.1 irrigation plan, the specified area for the hose bibs states to “protect in place and Install new brass hose bibb vacuum breaker Buckner model VBH.” Please advise.
 - a. There are (2) existing hose bibbs, follow the new irrigation plan sheet L3.1 to install new brass hose bibb vacuum breaker on each.
 - 14) Will we be allowed to abandon existing buried pipe that will not be reused?
 - a. All shallow piping within 12” is to be removed.
 - 15) Will Bid 677 for the Admin Building and Bid 678 be installed concurrently?
 - a. This cannot be confirmed at this time.
 - 16) Will the landscape architects or facilities manager be responsible for inspection?
 - a. Both Landscape Architects and Facilities Representatives will conduct inspections.
 - 17) Is this project under a Project Labor Agreement? (PLA?)
 - a. No.
 - 18) What are the expected working hours?
 - a. 7AM to 4PM Monday through Friday. Saturdays, 8AM to 4PM upon written approval.
 - 19) What are the working days in addition to the working hours?



Ventura County Community College District

PURCHASING DEPARTMENT

- a. 7AM to 4PM Monday through Friday. Saturdays, 8AM to 4PM upon written approval.
- 20) What is the anticipated duration of this project?
- a. Reference Section 00800 1.01 Contract Time (90) consecutive calendar days.
- 21) Are there any specific noise restrictions we should we be aware of?
- a. Reference 00700 4.14 Noise and Dust Control and Section 00800 1.57 for Construction Phasing. Note that Final Exam Week is 12/9/24 through 12/13/24. The Contractor shall be responsible for complying with the requirements of the city and county having jurisdiction with regard to noise ordinances governing construction sites and activities.
- 22) What is the earliest allowed time to commence demolition work?
- a. Once NTP is issued and the project schedule is approved. 7AM Monday through Friday.
- 23) Where is the designated area for material storage?
- a. TBD. Within the limits of the construction project jobsite.
- 24) Is a job site trailer necessary for this project?
- a. No.
- 25) Will electrical power be supplied by Campus?
- a. No. Reference Section 00800 1.08 Temporary Electrical Power.
- 26) Does the project include utility work?
- a. Reference the project bid documents for the scope of work.
- 27) Is an additional civil survey required, or can we rely on the Campus civil plans?
- a. No civil survey is needed, refer to the contract documents.
- 28) Is there a project allowance, and should it be included in the base bid amount?
- a. No. Please refer to Section 00800 Special Conditions.
- 29) Will the contractor be responsible for locating furniture, and should this cost be included in the bid?
- a. The contractor is responsible to Remove and reinstall the existing Library Drop-Off, reference the contract documents. Entry Booth will be removed under a separate contract. The concrete pad below the Entry Booth is to be demolished



Ventura County Community College District

PURCHASING DEPARTMENT

and disposed of by the contractor in this project Bid 677

- 30) Will the construction area be occupied, and if so, can you provide a phasing plan?
 - a. Surrounding buildings will be occupied, roadways and walkways need to be maintained at all times.

- 31) Will the dumpster area be located close to the building? Please specify the location.
 - a. Site logistics plan need to be submitted and approved, this plan can be coordinated during the preconstruction meeting once the project is awarded.

End of Section

**SECTION 32 17 23
TACTILE WARNING STRIPS**

PART 1 GENERAL

1.01 SECTION INCLUDES

This section includes general requirements for the installation of the tactile warning strips, also referred to as truncated domes.

1.02 QUALITY ASSURANCE

Contractor must have experience in installing truncated domes.

1.03 SUBMITTALS

Submit Manufacturer's product data sheets.

1.04 PRODUCT HANDLING

Deliver materials to job site in unopened containers bearing Manufacturer's name and product description, and store in safe place until installation.

PART 2 PRODUCTS

2.01 TACTILE WARNING STRIPS / TRUNCATED DOMES

Truncated domes shall be replaceable cast-in-place detectable/tactile warning surface as manufactured by Access-Tile, or equal. Color shall be Federal Yellow. Tiles shall have a nylon composite, corrosive resistant anchor system with stainless-steel fasteners.

PART 3 EXECUTION

3.01 INSTALLATION

Set tiles in wet concrete surface and follow the manufacture's installation requirements. Tile surface width will vary as per plan. Install modules to make up the required width and the depth of three feet.

3.02 CODE COMPLIANCE

Only approved DSA-AC detectable warning products and directional surfaces shall be installed as provided by the California Code of Regulations (CCR), Title 24, Chapter 5, Articles 2,3, and 4. And 11B-705.

END OF SECTION 32 17 23

**SECTION 32 90 20
LANDSCAPE MAINTENANCE**

PART 1 GENERAL

1.01 SECTION INCLUDES

This section includes general requirements for the landscape maintenance.

1.02 MAINTENANCE PERIOD

Once all landscape work is complete and approved by the District and all punch list items have been corrected and approved by the District, the Contractor will receive a written letter authorizing the start of the ninety-calendar day Landscape Maintenance period.

1.03 MAINTENANCE PERFORMAMNCE REVIEW SCHEDULE

The Contractor shall schedule an on-site review with the District Inspector and the Landscape Architect to review the condition of the landscape area being maintained every (30) days during the maintenance period. If any deficiencies exist, a punch list will be issued for the Contractor to address immediately. Failure to perform any punch list item in a timely manner (within 5 business days), shall delay payment for that portion of the maintenance period until the identified punch list item has been corrected. If the project is being maintained in a professional manner, VCCCD reserves the right to waive progress inspections during the (90) day maintenance period.

1.04 FINAL LANDSCAPE APPROVAL AND TURNOVER TO THE DISTRICT

At the end of the ninety-day maintenance period, the Contractor shall schedule an on-site inspection with the District Inspector and the Landscape Architect to determine if the landscape planting and irrigation is ready for the District to accept. If the landscape is not ready for acceptance, a punch list will be prepared for the Contractor to complete, and the maintenance period will extend until the punch list items have been approved by the District Inspector.

1.05 MAINTENANCE INSPECTION NOTIFICATIONS

A minimum of 48 hours is required when scheduling a maintenance on-site review.

1.06 REQUIREMENTS OF REGULATORY AGENCIES

Any required spraying work shall be done in accordance with governing agencies and the District policies. No spraying shall occur without prior written approval from the District.

PART 2 PRODUCTS

- 2.01 All materials used in conjunction with the maintenance work shall conform to the material requirements originally specified for the work. Apply at Manufacturer's recommended rate.

PART 3 EXECUTION

3.01 PEST AND DISEASE CONTROL

- A. Provide rodent, insect, pest, and disease control services at the first sign or symptom of infestations, or as directed by the District.
- B. Notify the District at the first sign or symptom of pest or disease.
- C. Perform pest and disease control services in accordance with the District policies.

3.02 TREE AND SHRUB CARE

- A. Tree pruning shall include the removal of broken, dead, or crossed branches and removal of sucker growth. Tree guys and staking shall be visually inspected and maintained in a secure manner.
- B. All walkways shall be kept clear for safe pedestrian passage.
- C. Shrub care shall include the clearance of mulch and any debris that accumulates around the shrub crown.
- D. Shrub areas shall be kept weed free by manually removing any weeds that appear on the weekly visit.
- E. If any plant dies for any reason or is damaged for any reason during the maintenance period, the Contractor shall replant as originally specified at no cost to the District.

3.03 IRRIGATION SYSTEMS

- A. Irrigation system maintenance shall include, operating, adjusting, and repairing the irrigation system to perform as designed.
- B. On each visit, visually and hydraulically inspect the irrigation system to ensure that no sprinkler breakage has occurred, no foreign matter is clogging the sprinkler heads and that sprinkler coverage and arc of sprays is proper and shall correct any other inadequacies that might impair the proper performance of the irrigation system. Minor irrigation repairs shall be accomplished by the weekly maintenance crew as needed with the like kind materials unless otherwise authorized by the District.

- C. Malfunctioning valves shall be brought to the attention of the District for approval of appropriate repair.
- D. Notify the District immediately of any system failure or disruption in order that steps can be taken to rectify the problem.

3.04 HARDSCAPED AREAS

Maintain all hardscape areas weed-free. Use of chemicals is elective with Contractor, subject to prior approval by District Inspector, and shall conform as specified. The use of toxic chemicals shall require proof of proper permit for use on this jobsite. Weed control shall be performed as often as needed or required.

3.05 IRRIGATION SCHEDULING

At least once every two weeks, the Contractor shall review water requirements of the project by probing in at least one area covered by each sectional valve and ascertaining the anticipated water requirements, adjusting the automatic controller accordingly. Particular attention shall be given to avoid applying more water than the soil can absorb at one time. Where more water is required than the soil can take at one time, Contractor shall set the automatic timer for repeat cycles at short intervals to satisfy the ultimate water demand. In no cases shall water be allowed to run across the surface of the ground.

END OF SECTION 32 90 20

**SECTION 32 93 15
LANDSCAPE PLANTING**

PART 1 GENERAL

1.01 SECTION INCLUDES

This section includes requirements for the installation of the plant material.

1.02 RELATED SECTIONS

Section 02 41 20 – Existing Landscape Removals

Section 32 84 23 – Irrigation System

Section 32 90 20 – Landscape Maintenance

1.03 SUBMITTALS

- A. Furnish material invoices indicating the quantities of fertilizers, soil amendments, and all materials delivered to the job site. Material invoices must be approved by the Landscape Architect prior to incorporating soil amendments. Certificates shall be prepared by the supplier or distributor and shall indicate the quantities and qualities of materials used.
- B. Plant Material – Submit clear photos of all plant material specified taken and the source. Indicate plant material height and spread measured at the source. Photos must clearly show the plant quality and size. The Landscape Architect will determine if the photos meet the specifications and if further site inspection at the nursery is required or if another source is required to produce the specified plant material.

1.04 PROTECTION

- A. Contractor shall check or locate existing structures, electric cables or conduits, utility lines and other existing features or conditions above or below ground level that might be damaged as a result of the operation. Questions or conflicts arising out of such examination prior to or during operation shall be immediately directed to the attention of the District for necessary action or decisions before resuming operation. Contractor shall be responsible for repair or replacement at no cost to the District for features or conditions damaged through failure to comply with the above procedures.
- B. Protect existing trees and tree roots from any damage that may be caused as a result of any planting or irrigation operations.

1.05 ALTERNATES

Alternates will not be permitted, except where indicated, and as approved by the Landscape Architect.

1.06 LANDSCAPE ON-SITE OBSERVATIONS

- A. The Contractor shall notify the district and the Landscape Architect forty-eight (48) hours in advance for all required On-Site Observations. The final On-Site Observation shall require seven (7) days advance notice.
- B. The Contractor shall submit for approval a complete work schedule indicating tentative dates for On-Site Observations.
- C. Record drawings shall be current and present at the time of On-Site Observations and shall be updated on a weekly basis.
- D. Landscape On-Site Observations shall be required for the following phases of Work:
 - 1. Job start meeting.
 - 2. Finish grading - When all fine grading work is complete, notify the Landscape Architect for approval prior to proceeding with the planting.
 - 3. Soil Preparation - furnish certificates for soil amendments at this time. Quantities must be reviewed by the Landscape Architect prior to incorporating into soil. When all soil preparation work is complete notify the Landscape Architect for approval prior to proceeding with the work.
 - 4. Irrigation System Review - See Irrigation Section.
 - 5. Review plant material for quality prior to planting. The Landscape Architect has the right to reject any plant material that it deems unacceptable at time of delivery.
 - 6. Review planting during the planting process.
 - 7. Review planting after installation.
 - 8. Pre-maintenance - When all Work has been completed a pre-maintenance walk thru shall be conducted and the contractor must receive approval from the District prior to starting the maintenance period.
 - 9. Maintenance - Notify the District and the Landscape Architect after the maintenance period has progressed for thirty days for a review of all work and make all corrections that are deemed necessary.
 - 10. Final Review - After the ninety-day (90) maintenance period is complete notify the District and the Landscape Architect for a final review of all work. All work must receive approval from the District and the Landscape Architect prior to being deemed complete and or filing a notice of completion.

1.07 QUALITY

All plant material shall have a growth habit normal to the species and shall be sound, healthy, vigorous, and free from insect pests, plant diseases, sun scalds, fresh bark abrasions, excessive abrasions, or other objectionable disfigurements. Tree trunks shall be sturdy and well "hardened off." All plants shall have normal well-developed branch systems, and vigorous and fibrous roots systems which are neither root- nor pot-bound and are free of kinked or girdling roots.

1.08 GUARANTEE

All plant material shall be guaranteed for one year. This guarantee is in addition to, and not a limitation of, other rights the District may have under the Contract Document.

PART 2 PRODUCTS

2.01 MATERIALS – LANDSCAPE

- A. Trees: varieties, sizes, and quantities, as noted on plans.
- B. Tree Stakes: Tree Stakes shall be 2" diameter Lodgepole pine, pressure treated with Chemonite (ACZA) @ .40 pounds per cubic foot, for in-ground rating. Stakes shall be 10 feet long. Horizontal supports shall be 1x6 cedar.
- C. Tree Ties: Tree Ties shall be virgin flexible vinyl, meeting ASTM-D-412, with U.V. inhibitor. 24" inches long. (Cinch Ties of eq.)
- D. Soil Amendments: Organic soil amendment shall be Agromin "Agromend," or equal.
- E. Shrubs: varieties, sizes and quantities as noted on the plans.
- F. Pre-Emergent Herbicide. Once planting operations and fine grading work has been completed, apply a preemergence herbicide over the exposed soil surface prior to the installation of both weed fabric and mulch. Apply the preemergence as required by the manufacturer's specifications and application instructions.
- G. Mulch shall be Del-Rio 3/8 Inch rock. Finish grade soil in all planters to a smooth uniform surface suitable for both weed fabric and mulch installation. Install weed fabric first then cover weed fabric with a two-inch layer of mulch throughout specified planting areas. Keep mulch away from direct contact with both shrub and tree crowns. Dress mulch areas to present a clean, uniform appearance when completed.
- H. Weed Fabric: Mirafi model 'Mscape' install on all shrub and mulch covered planting areas. Secure fabric to soil using 6" long metal soil staples spaced 5'-0" o.c. in a triangular pattern.

2.02 SOIL AMENDMENTS

- A. Pre-plant amendments to be incorporated into the top 6 inches of soil throughout all planting areas:
 - 1. Organic Amendments – 6 cu. yds. per 1,000 sq. ft.
 - 2. Soil Sulfur – 25 lbs. per 1,000 sq. ft.
 - 3. Nitrogen Fertilizer – 1.1 lbs. per 1,000 sq. ft.
 - 4. Iron (Fe) – 0.10 lbs. per 1,000 sq. ft.
 - 5. Boron (B) – 0.01 lbs. per 1,000 sq. ft.

- B. Tree and Shrub backfill mix:
 - 1. Native Site Soil – 66%
 - 2. Organic Amendments – 33%
 - 3. Commercial Fertilizer (15-15-15) – 1.0 lbs. per cu. yd.
 - 4. Iron – 2.0 oz per cu. yd.
 - 5. Zinc – 1.0 oz per cu. yd.
 - 6. Manganese – 1.0 oz per cu. yd.

2.03 ROOT BARRIERS

Shall be linear barriers 24" deep by 2 feet long attached to the length as per plan; manufactured by Deeproot or equal.

2.04 METAL EDGE

The metal edge material between the decomposed granite paving and the planting area shall be 1/8" X 4" black powder coated steel edging as manufactured by the J D Russel Company or equal.

PART 3 EXECUTION

3.01 SITE CONDITION

No plant materials shall be planted until all operations in conjunction with the installation of the irrigation system have been approved by the District and the Landscape Architect. Final grades shall be established, and the planting areas shall be properly prepared and graded.

3.02 GROUND PREPARATION – ALL AREAS

- A. After the Site Clearance and Preparation has been approved by the District, planted areas shall be thoroughly cultivated to a depth of six inches to reduce any compaction, which occurs as a result of construction. Protect existing tree roots.
- B. Stones or rocks over 1" in size, construction refuse, and other deleterious material shall be removed from the site, safely and legally disposed of.
- C. Apply soil preparation materials to all planting areas and thoroughly incorporate into the top six inches of soil or as directed by soil scientist report.
- D. Wet soil thoroughly and allow to settle. Repeat this compaction procedure until soil is stable enough to permit aeration and drainage for plant material.
- E. Finish grade all planting areas to a smooth, uniform surface ready for planting. Finish grade shall be one inch below finish grade of adjacent paved surfaces unless otherwise noted on Drawings.

3.03 TREE STAKING

Stake each tree with four lodge pole stakes, firmly set into the grade and in alignment forming a square. Secure the four poles with 1x6 cedar horizontal supports, attach with deck screws. Secure tree trunk with cinch ties.

3.04 PLANTING – TREES & SHRUBS

- A. Trees and shrub planting shall comply with details on drawings.
- B. Make necessary adjustments and excavate pits of square outline and vertical sides for all plants. Scarify sides and bottoms of all plant pits. Set trees vertical.
- C. Protect roots or ball of plants at all times from sun and drying winds.
- D. If directed by the Landscape Architect, the Contractor shall prune plants in accordance with standard horticultural practice.
- E. Wet soil thoroughly and allow to settle. Repeat this compaction procedure until soil is stable enough to permit aeration and drainage for plant material.

3.05 ROOT BARRIER

Install tree root barriers in the total lengths as shown on the plans and details. The vertical root deflecting ribs shall be facing inwards to the rootball, and the double top edge shall be set 2 inches above the finish grade. Panels shall be connected with the flexible joiner strips to the required overall length. Install panels straight, uniform in a vertical position.

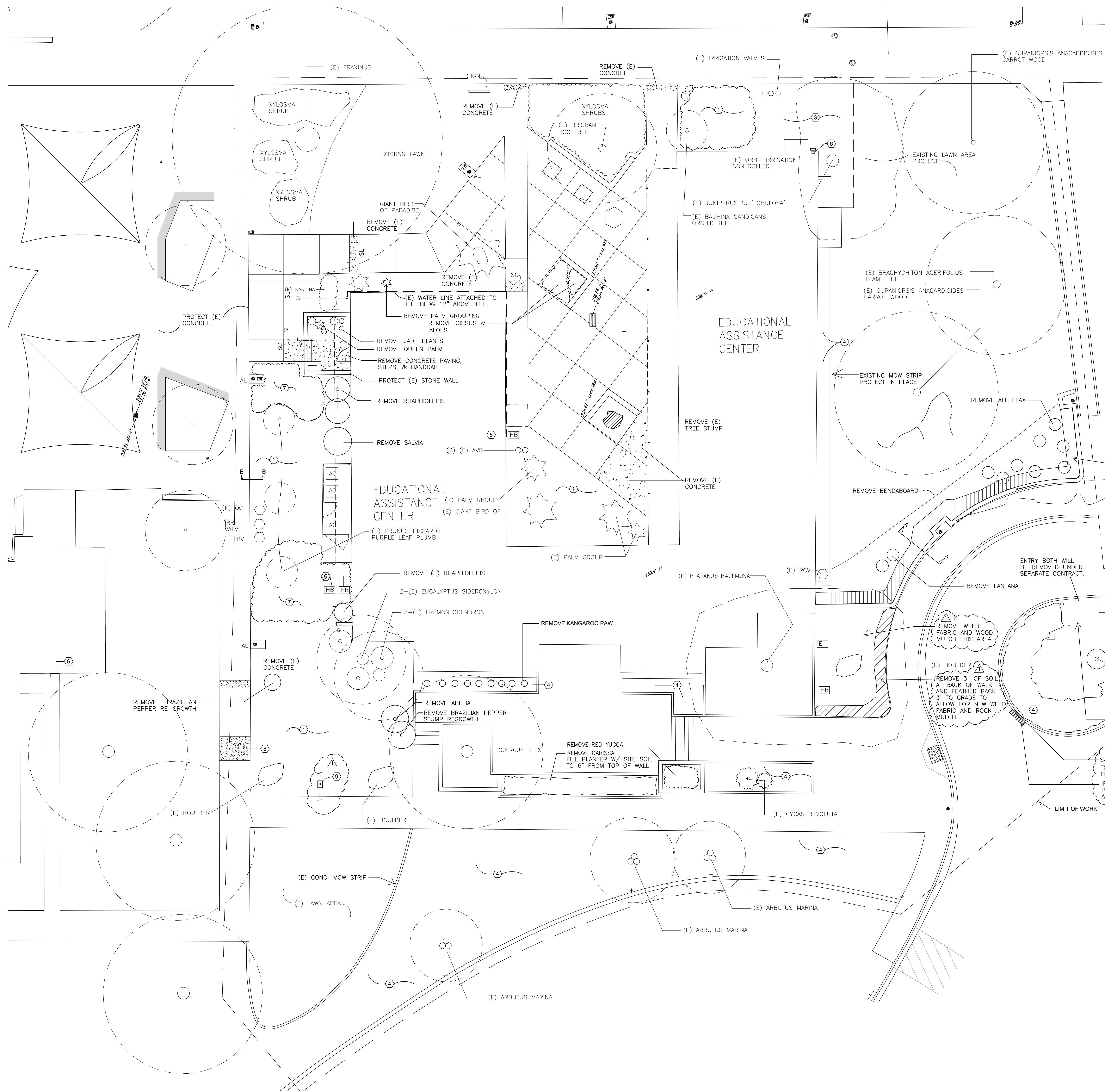
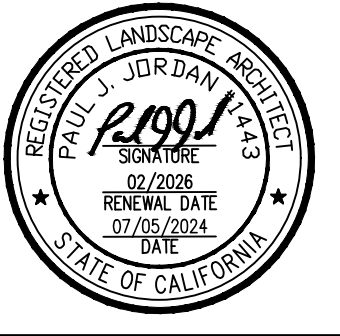
3.06 MULCH

Install two-inch layer of mulch throughout shrub areas where indicated on the plan.. Finish grade shrub areas to a smooth uniform surface to receive mulch. Keep mulch away from tree and shrub crown. Dress mulch areas to present a clean uniform appearance when complete.

3.07 LANDSCAPE WEED FABRIC

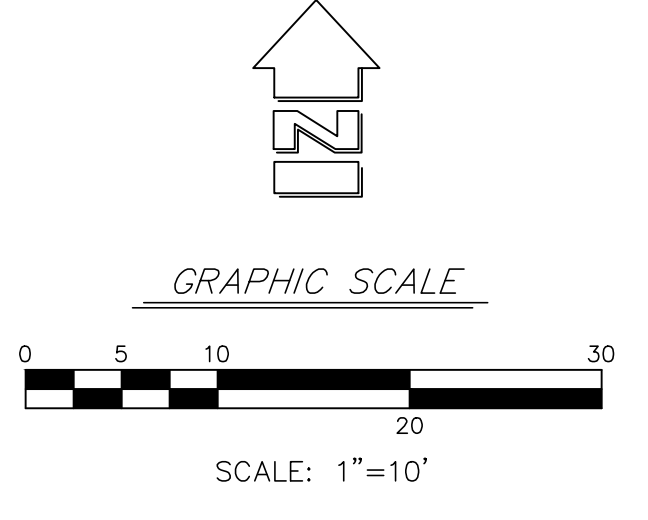
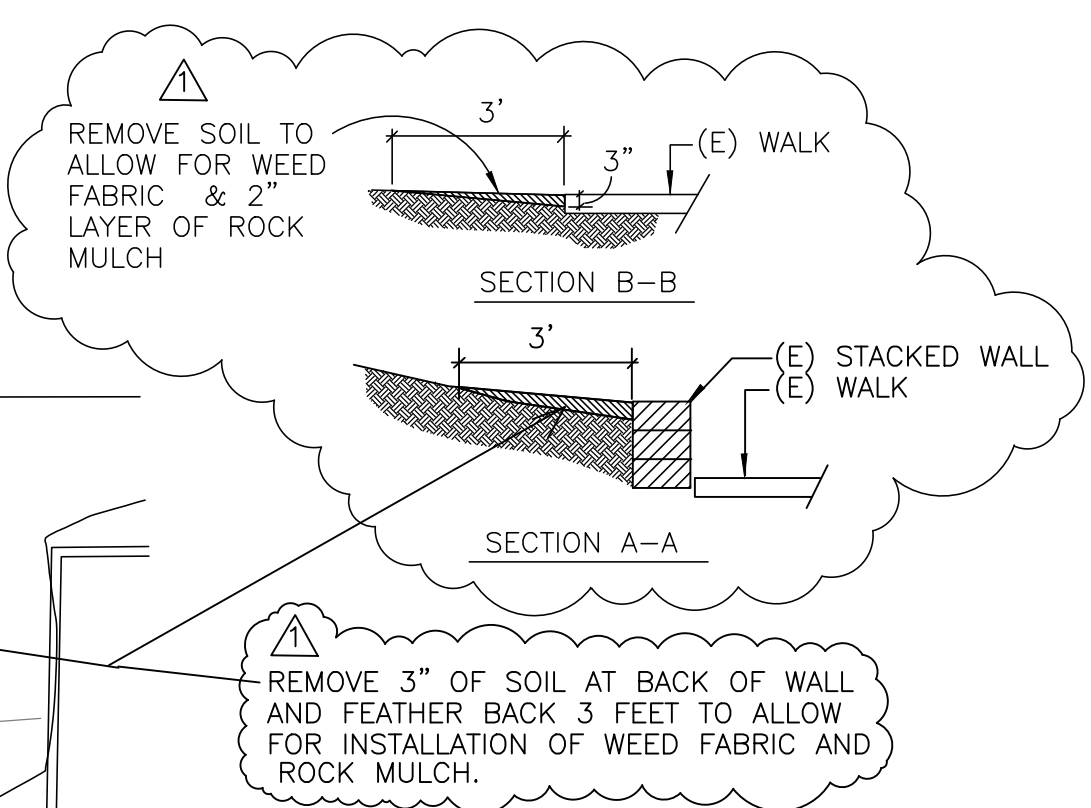
Applied throughout all planting areas. Overlap fabric six inches and staple with 6-inch galvanized staples at 24 inches along the border and 36 inches in the field. Cut out just enough room for the shrub and tree planting pit. Secure the fabric around each planting pit with staples.

END OF SECTION 32 93 15



KEY NOTES

| NO. | WORK DESCRIPTION |
|-----|---|
| 1 | REMOVE (E) SHRUBS, ROOTS, WEEDS, AND ALL DEBRIS. FINE GRADE TO A UNIFORM SURFACE 3" BELOW ADJACENT CONCRETE. INCORPORATE PRE-PLANTING AMENDMENTS AS PER THE SPECIFICATIONS. SEE SECTION B-B |
| 2 | REMOVE TRUNK, AND ROOTS WITHIN THE TOP 3 FEET OF GRADE. |
| 3 | REMOVE ANY VEGETATION AND SOIL TO ALLOW FOR THE NEW WALK AND THE 3 INCH LAYER OF ROCK MULCH. |
| 4 | REMOVE WEEDS, AND SOIL TO ALLOW FOR THE 3 INCH LAYER OF ROCK MULCH. SEE SECTION B-B |
| 5 | (E) HOSE BIB AND SEE IRRIGATION FOR ADDED WORK. |
| 6 | REMOVE (E) IRRIGATION CONTROLLER AND REPLACE WITH (N) SEE IRRIGATION PLAN |
| 7 | BEFORE REMOVING IVY SPRAY WITH A HERBICIDE THAT WILL PENETRATE THE ROOTS FOR COMPLETE KILL. THEN REMOVE. |
| 8 | EXISTING CRACKED CONCRETE PATCH. REMOVE AND REPLACE WITH (N) CONCRETE. SEE CONSTRUCTION DETAILS |
| 9 | EXISTING 2" DOMESTIC LEAKING WATER LINE AND BALL VALVE IN BOX. REPLACE BALL VALVE AND FITTINGS AS NECESSARY TO FIX LEAKING CONNECTION. |



THESE DRAWINGS, SPECIFICATIONS AND DESIGNS ARE INSTRUMENTS OF PROFESSIONAL SERVICES AND AS SUCH ARE THE PROPERTY OF JORDAN, GILBERT & BAIN LANDSCAPE ARCHITECTS, INC. REPRODUCTION OR OTHER USE NOT AUTHORIZED BY JORDAN, GILBERT & BAIN IS PROHIBITED WITHOUT WRITTEN APPROVAL

CLIENT
 VENTURA COUNTY CUMUNITY COLLEGE DISTRICT
 761 EAST DAILY DRIVE, SUITE 200
 CAMARILLO, CA 93010

PROJECT
 VENTURA COLLEGE
 ADMINISTRATION BUILDING
 LANDSCAPE RENOVATION
 4687 TELEGRAPH ROAD
 VENTURA, CA 93003

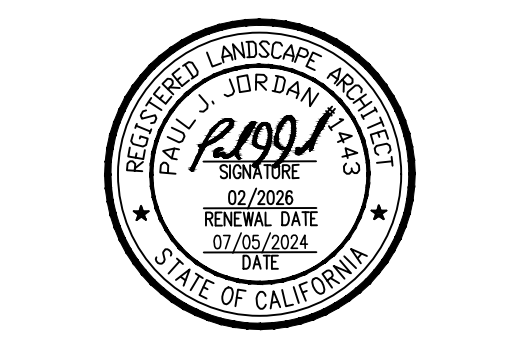
REVISIONS

| NO. | DATE | BY | DESCRIPTION |
|-----|--------|----|----------------|
| 1 | 8-1-24 | PJ | ADDENDUM NO. 1 |

SHEET TITLE
 LANDSCAPE & MISCELLANEOUS
 REMOVALS

DRAWN: PJ
CHECKED: PJ
PRINTED FOR REVIEW: 3/20/24
PRINTED FOR BID: 7-5-24

DRAWING
L2.1
 SHEET 2 OF 8
 PROJECT No. 23.31



UNDERGROUND SERVICE ALERT
 CALL: TOLL FREE 1-800-227-2600
 TWO WORKING DAYS BEFORE YOU DIG

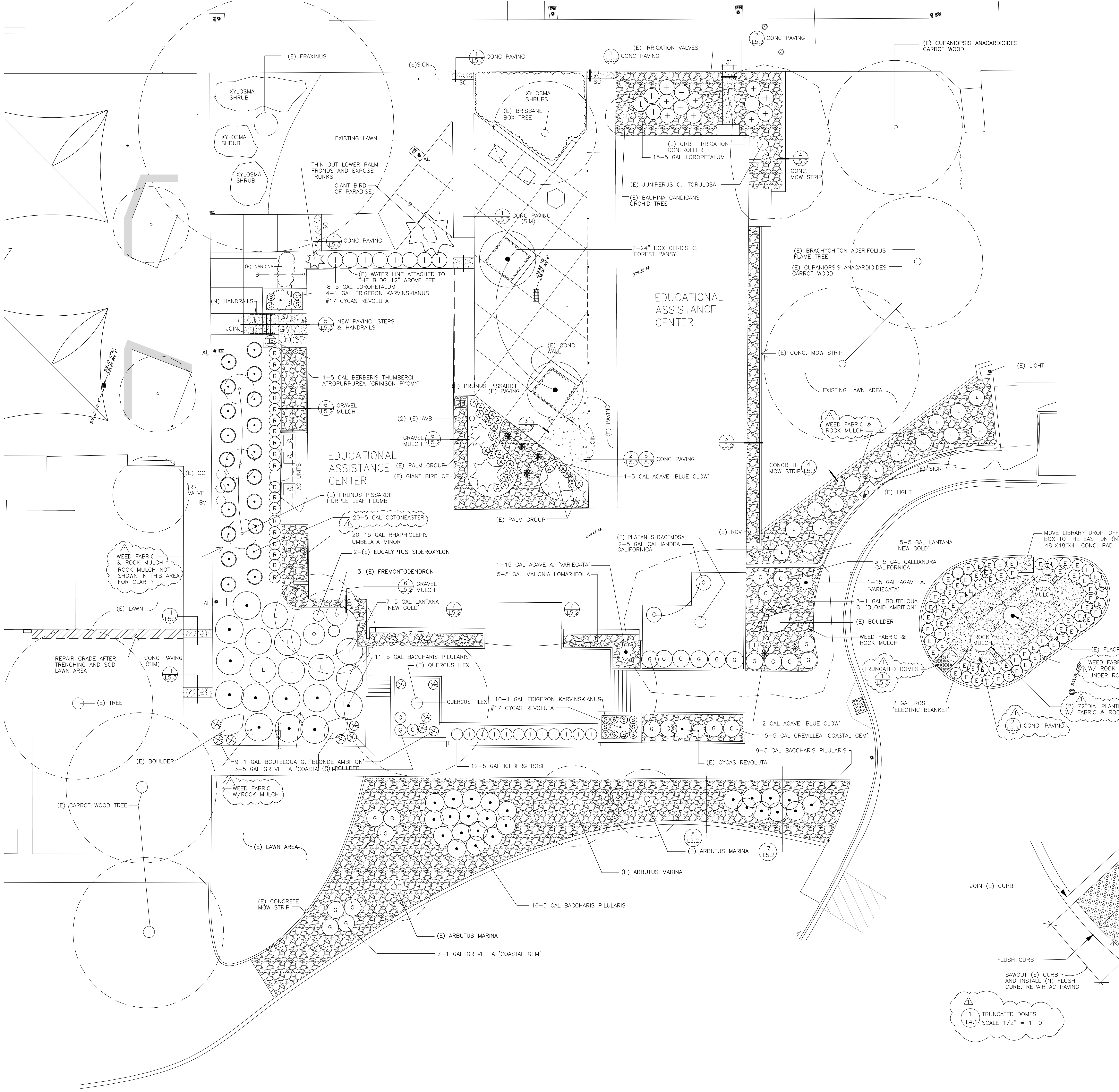
REVISIONS

| NO. | DATE | BY | DESCRIPTION |
|-----|--------|----|----------------|
| 1 | 8-1-24 | PJ | ADDENDUM NO. 1 |

CLIENT
 VENTURA COUNTY COMMUNITY COLLEGE DISTRICT
 701 EAST DAILY DRIVE, SUITE 200
 CAMARILLO, CA 93010

SHEET TITLE
LANDSCAPE RENOVATION
 PROJECT
 VENTURA COLLEGE
 ADMINISTRATION BUILDING
 LANDSCAPE RENOVATION
 4887 TELEGRAPH ROAD
 VENTURA, CA 93003

| |
|-----------------------------|
| DRAWN: PJ |
| CHECKED: [Signature] |
| PRINTED FOR REVIEW: 3/20/24 |
| PRINTED FOR BID: 7-5-24 |



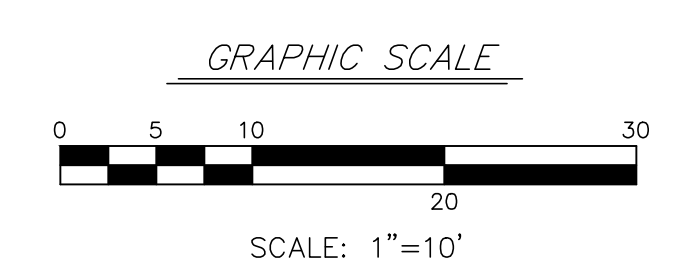
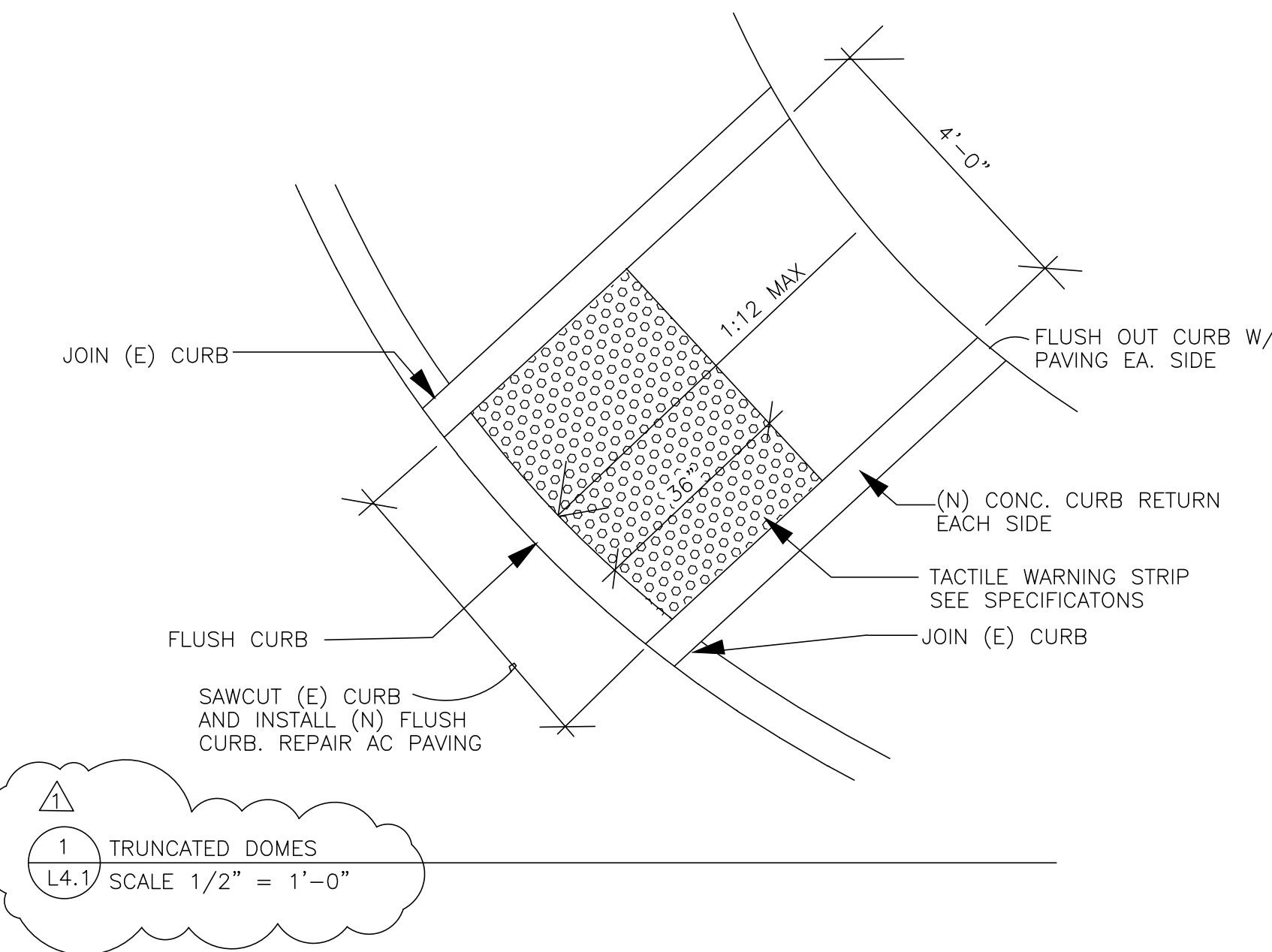
PLANT LEGEND

| SHRUBS SYMBOL | QUAN. | SIZE | BOTANICAL NAME COMMON NAME | DETAIL REFERENCE |
|---------------|-------|-----------|--|------------------|
| (A) | 31 | 5 GALLON | AGAPANTHUS AFRICANUS LILY-OF-THE-NILE | 2/L5.1 |
| (*) | 2 | 15 GALLON | AGAVE ATTENUATA 'VARIEGATA' VARIEGATED FOX TAIL AGAVE | 2/L5.1 |
| (*) | 6 | 5 GALLON | AGAVE 'BLUE GLOW' BLUE GLOW AGAVE | 2/L5.1 |
| (B) | 1 | 5 GALLON | BERBERIS THUMBERGII ATROPURPUREA 'CRIMSON PYGMY' | 2/L5.1 |
| (C) | 20 | 5 GALLON | COTONEASTER D. 'CORAL BEAUTY' | 2/L5.1 |
| (D) | 33 | 5 GALLON | BACCHARIS PILULARIS 'TWIN PEAKS' DWARF COYOTE BRUSH | 2/L5.1 |
| (E) | 14 | 1 GALLON | BOUTELOUA G. 'BLONDE AMBITION' BLONDE AMBITION BLUE GRAMA | 2/L5.1 |
| (F) | 5 | 5 GALLON | CALLIANDRA CALIFORNICA BAJA 'FAIRY' DUSTER | 2/L5.1 |
| (G) | 2 | #17 | CYCAS REVOLUTA SEGO PALM | 2/L5.1 |
| (H) | 23 | 5 GALLON | LOROPETALUM CHINESE 'MONRAZ' RAZZLEBERRY FRINGE FLOWER | 2/L5.1 |
| (I) | 22 | 5 GALLON | LANTANA CAMARA 'NEW GOLD' | 2/L5.1 |
| (J) | 14 | 1 GALLON | ERIGERON KARVINSKIANUS SANTA BARBARA DAISY | 2/L5.1 |
| (K) | 22 | 1 GALLON | GREVILLEA 'COASTAL GEM' PROSTRATE GREVILLEA | 2/L5.1 |
| (L) | 78 | 2 GALLON | ROSA 'ELECTRIC BLANKET' ELECTRIC BLANKET CARPET ROSE | 2/L5.1 |
| (M) | 12 | 5 GALLON | ROSA SPP. 'ICEBERG' ICEBERG ROSE | 2/L5.1 |
| (N) | 20 | 5 GALLON | RHAPHIOLEPIS UMBELATA MINOR YEDDA HAWTHORN | 2/L5.1 |
| (O) | 5 | 5 GALLON | MAHONIA LOMARIFOLIA | |

| TREE SYMBOL | QUAN. | SIZE | BOTANICAL NAME COMMON NAME | DETAIL REFERENCE |
|-------------|-------|------------------|--|------------------|
| (P) | 2 | 24" BOX STANDARD | CERCIS CANADENSIS 'FOREST PANSY' REDBUD | 1/L5.1 |

GROUND COVER SYMBOL DESCRIPTION

| SYMBOL | DESCRIPTION |
|--------|--|
| (Q) | 2 INCH LAYER OF 3/8" DEL-RIO PEA GRAVEL OVER WEED FABRIC ALSO IN PLANTING AREAS INDICATED WITHOUT SYMBOL |



THESE DRAWINGS, SPECIFICATIONS AND DESIGNS ARE INSTRUMENTS OF PROFESSIONAL SERVICES AND AS SUCH ARE THE PROPERTY OF JORDAN, GILBERT & BAIN LANDSCAPE ARCHITECTS, INC. REPRODUCTION OR OTHER USE NOT AUTHORIZED BY JORDAN, GILBERT & BAIN IS PROHIBITED WITHOUT WRITTEN APPROVAL.