

REVISIONS

NO.	DATE	BY	DESCRIPTION
1	9-4-24	PJ	ADDENDUM NO. 2

CLIENT
 VENTURA COUNTY COMMUNITY COLLEGE DISTRICT
 701 EAST PALMDALE BLVD., SUITE 200
 CAMARILLO, CA 93010

SHEET TITLE
LANDSCAPE DETAILS

PROJECT
 VENTURA COLLEGE
 ADMINISTRATION BUILDING
 LANDSCAPE RENOVATION
 4667 TELEGRAPH ROAD
 VENTURA, CA 93003

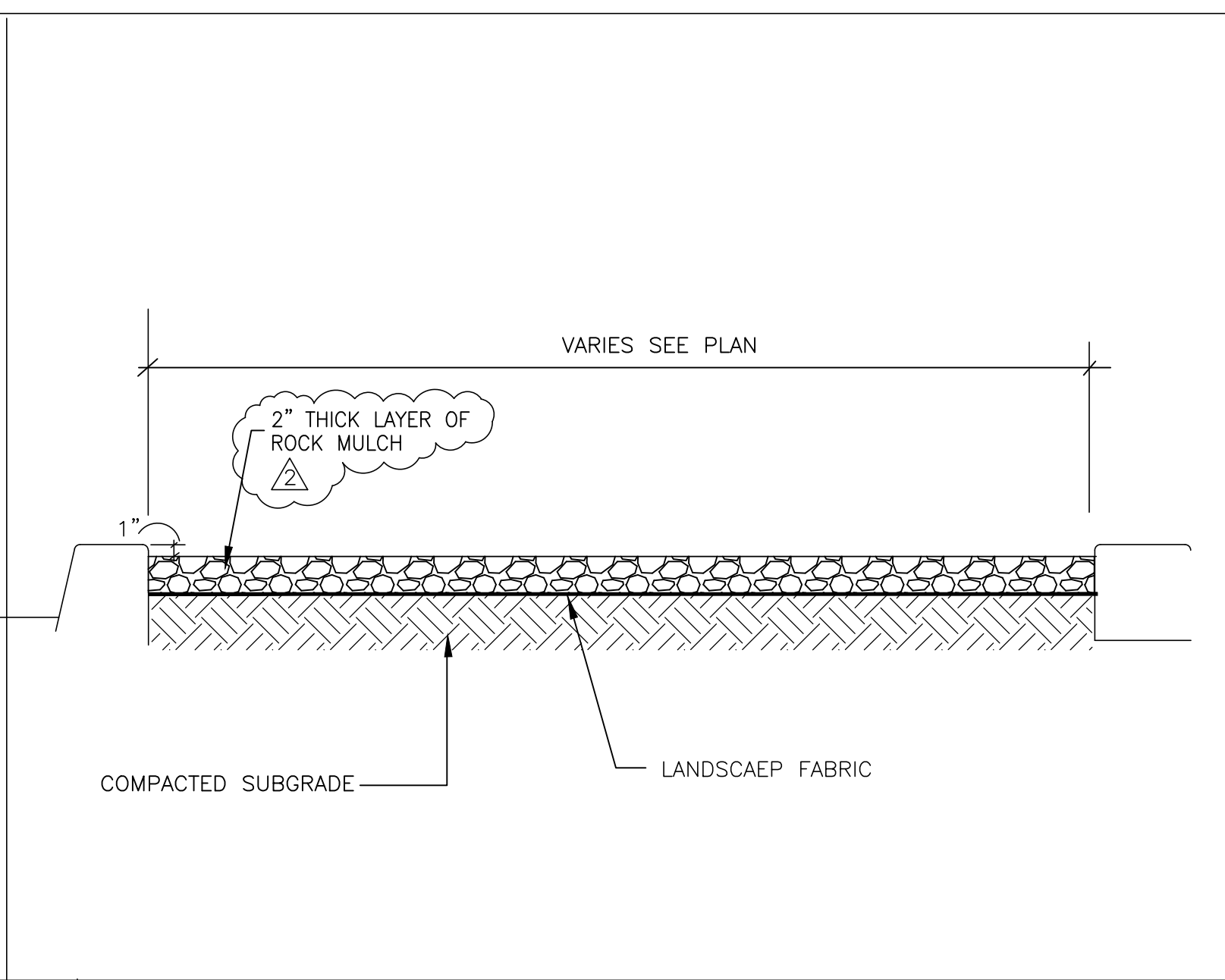
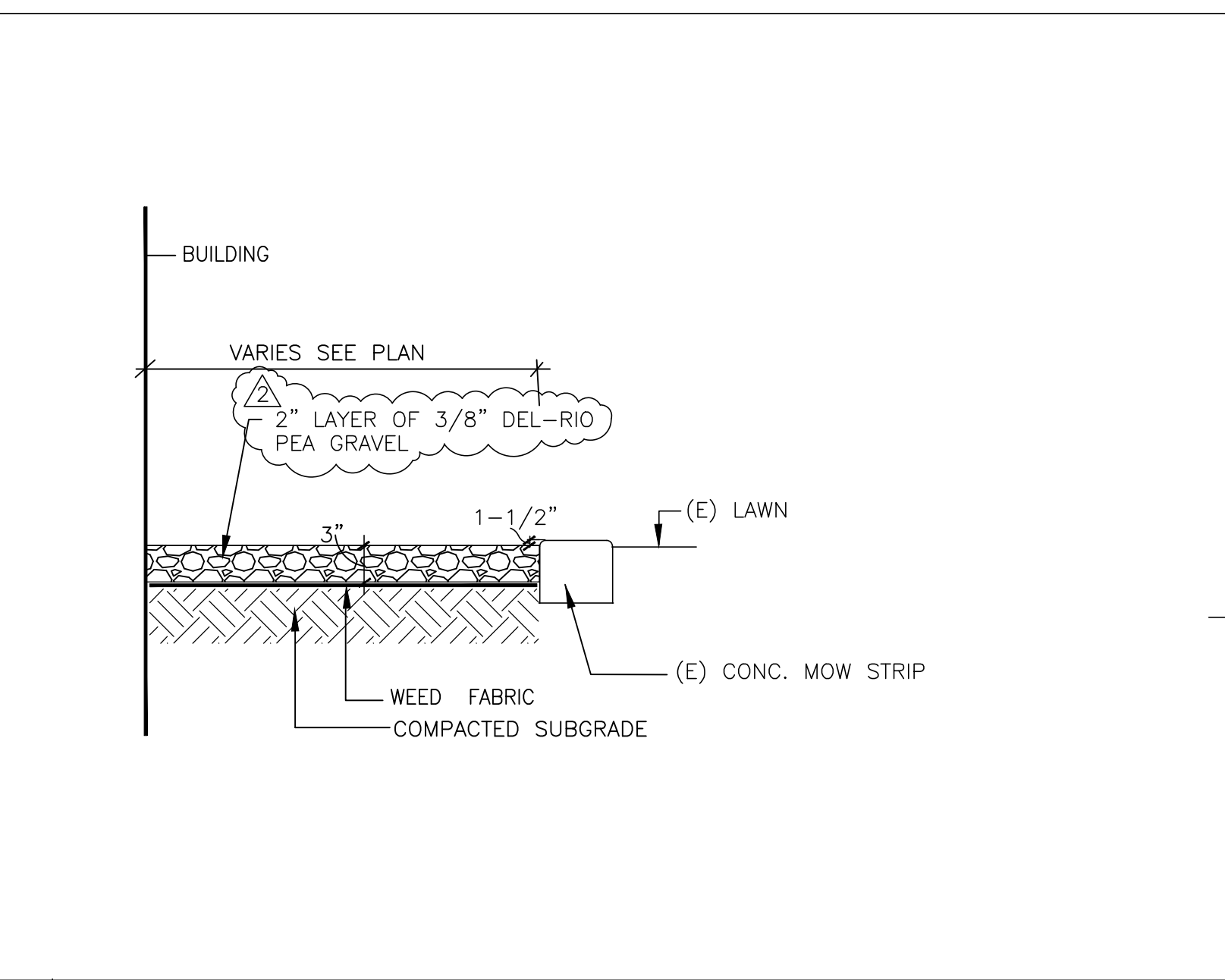
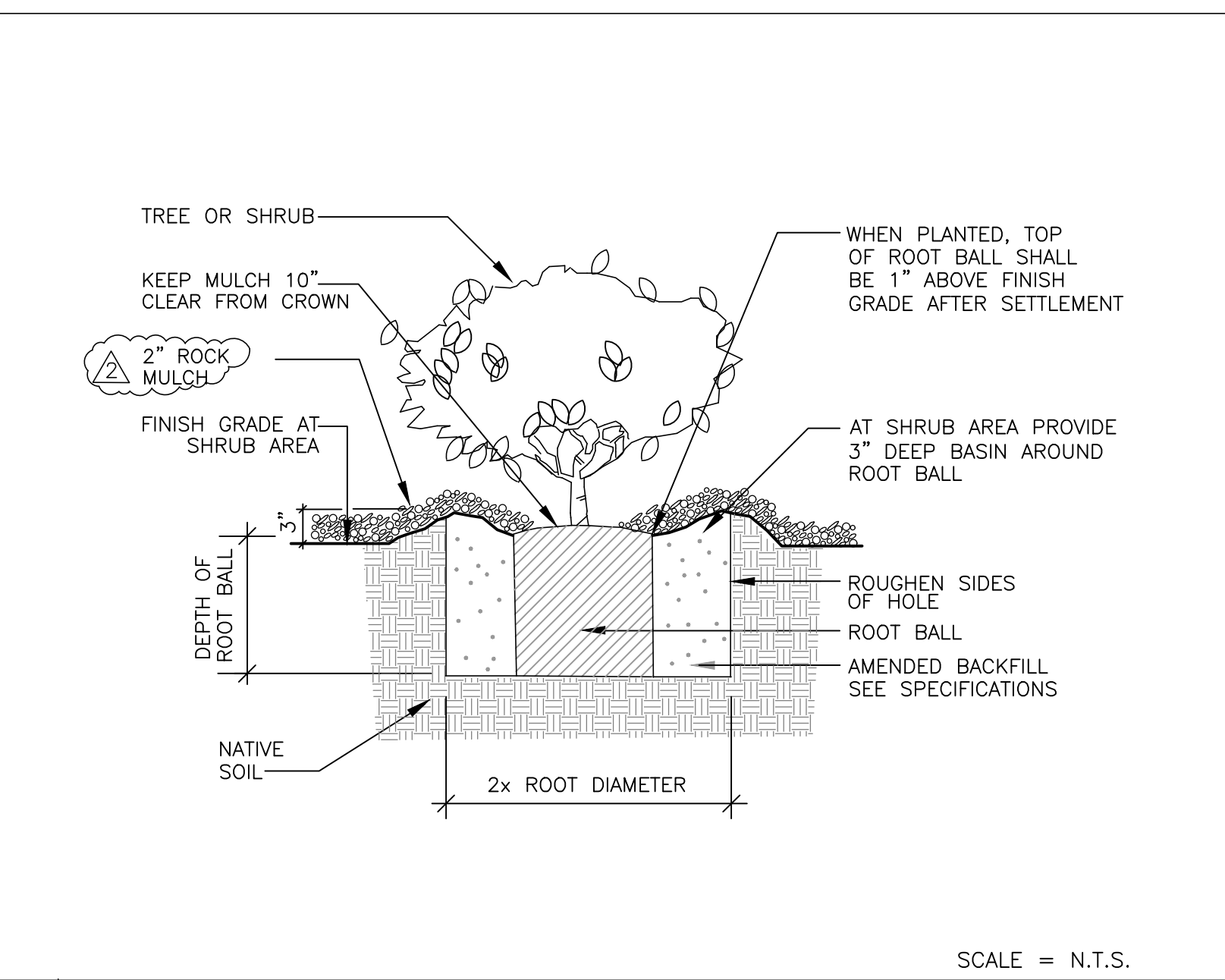
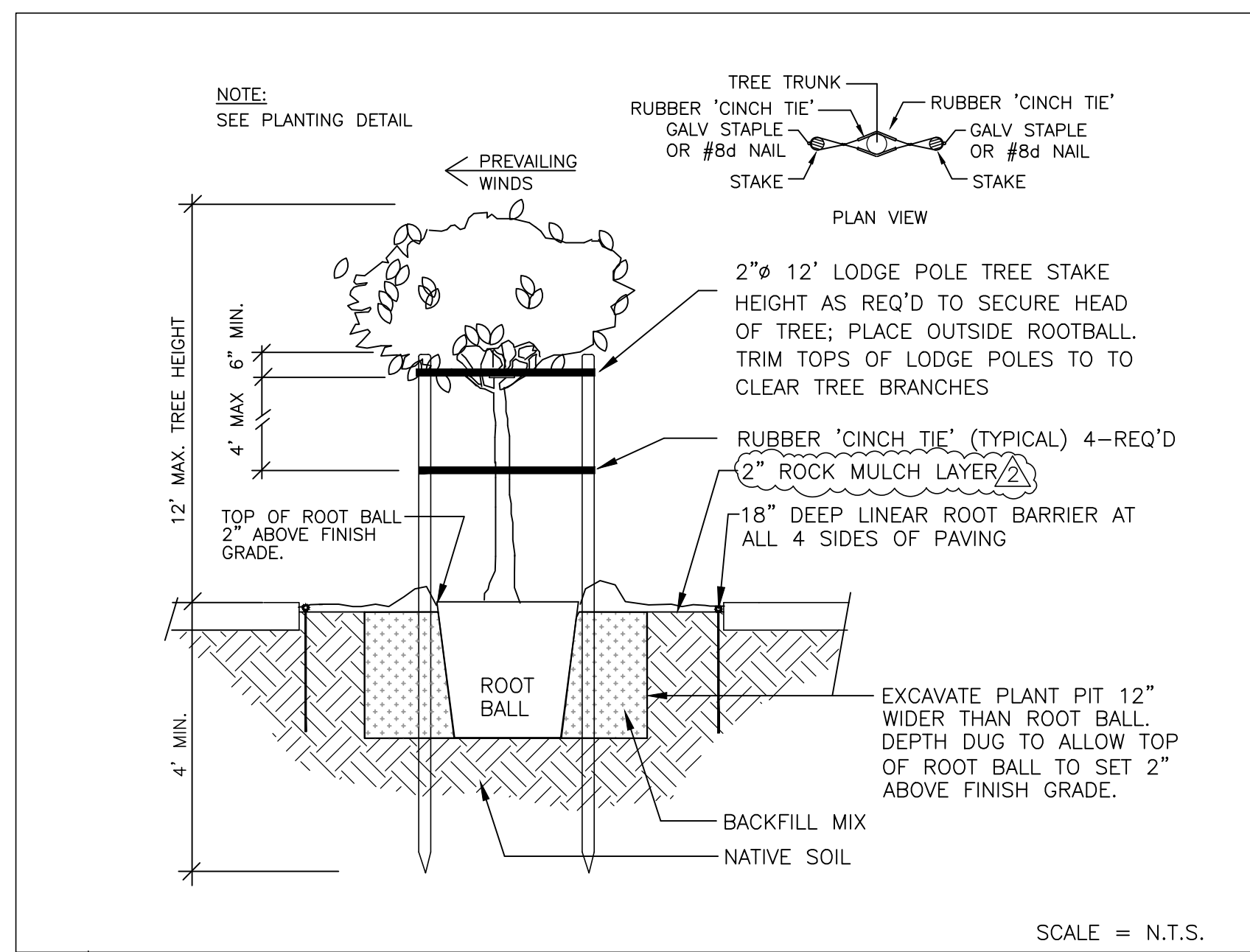
DRAWN: PJ	DATE: 3/20/24
CHECKED:	PRINTED FOR REVIEW: 3/20/24
	PRINTED FOR BID: 7-5-24

DRAWING

L5.2

SHEET 7 OF 8
 PROJECT No. 23.31

THESE DRAWINGS, SPECIFICATIONS AND DESIGNS ARE INSTRUMENTS OF PROFESSIONAL SERVICES AND AS SUCH ARE THE PROPERTY OF JORDAN, GILBERT & BAIN LANDSCAPE ARCHITECTS, INC. REPRODUCTION OR OTHER USE NOT AUTHORIZED BY JORDAN, GILBERT & BAIN IS PROHIBITED WITHOUT WRITTEN APPROVAL.

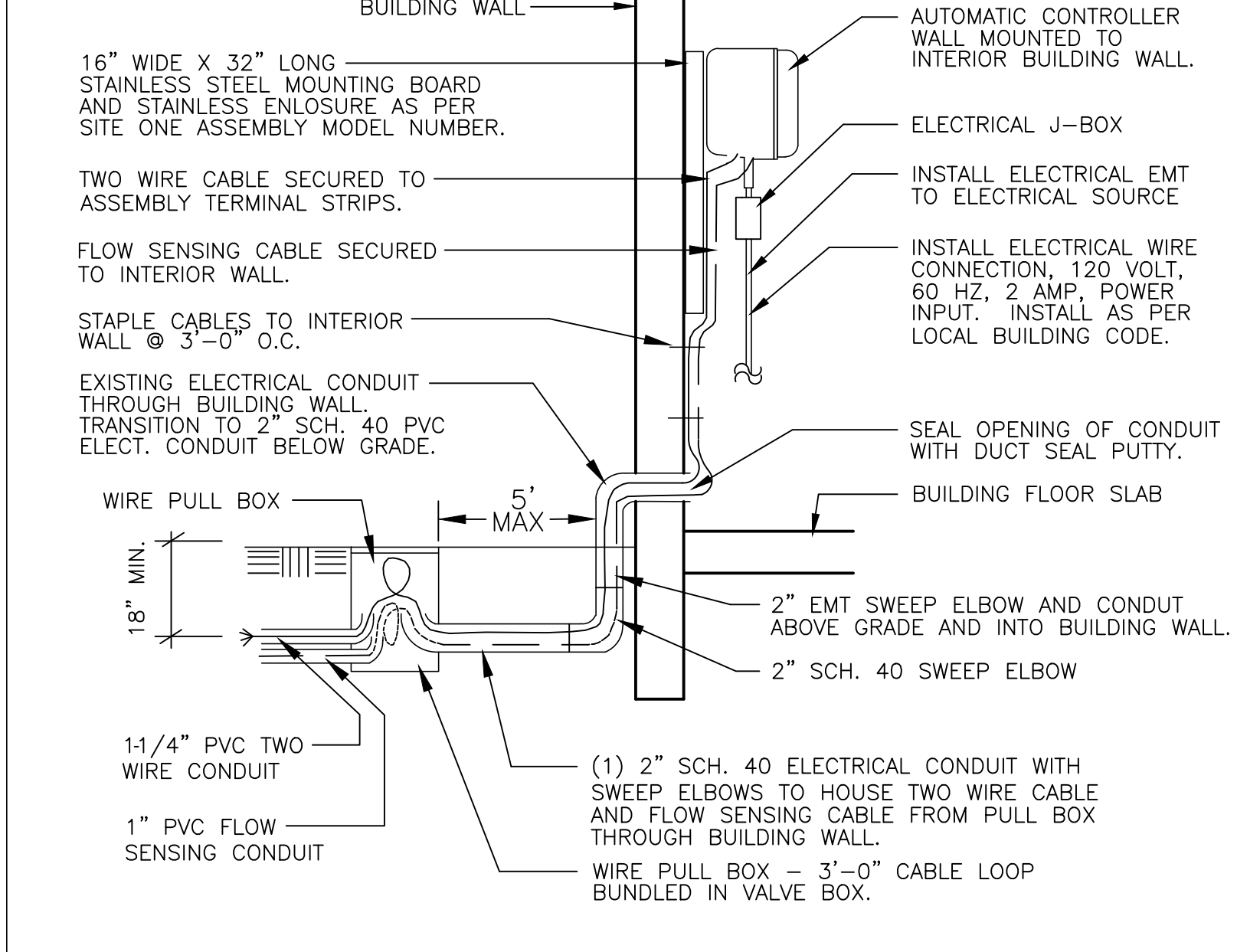
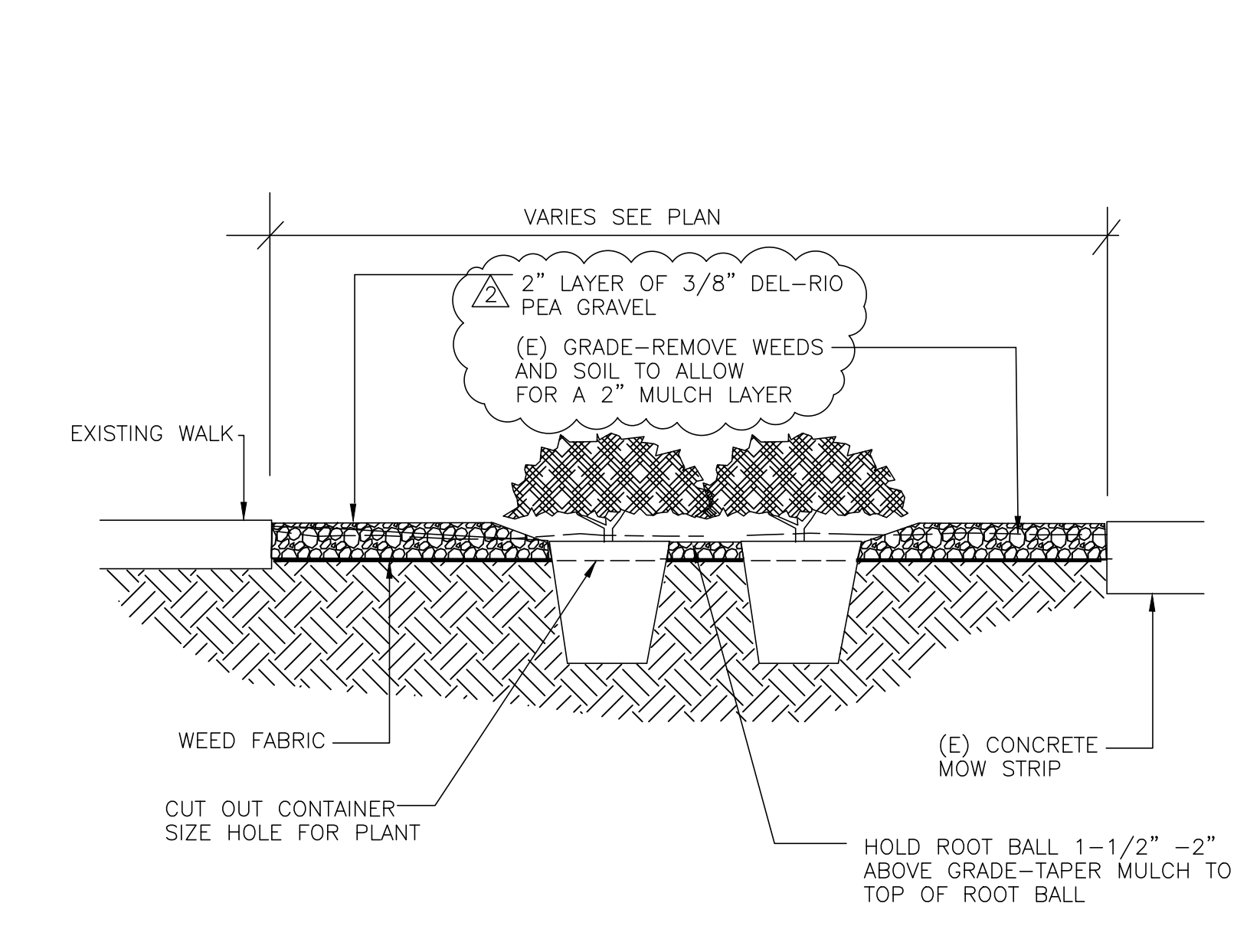
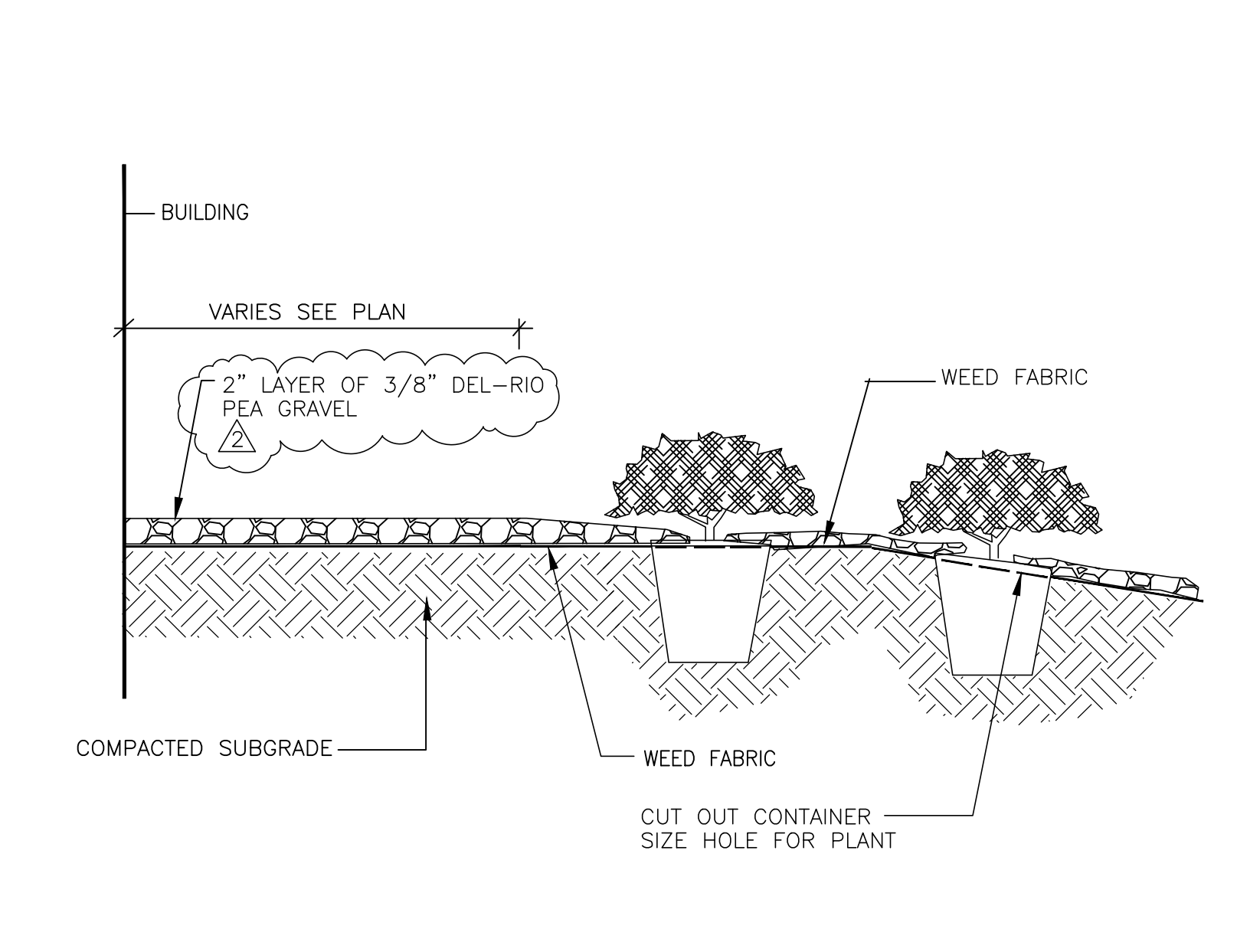
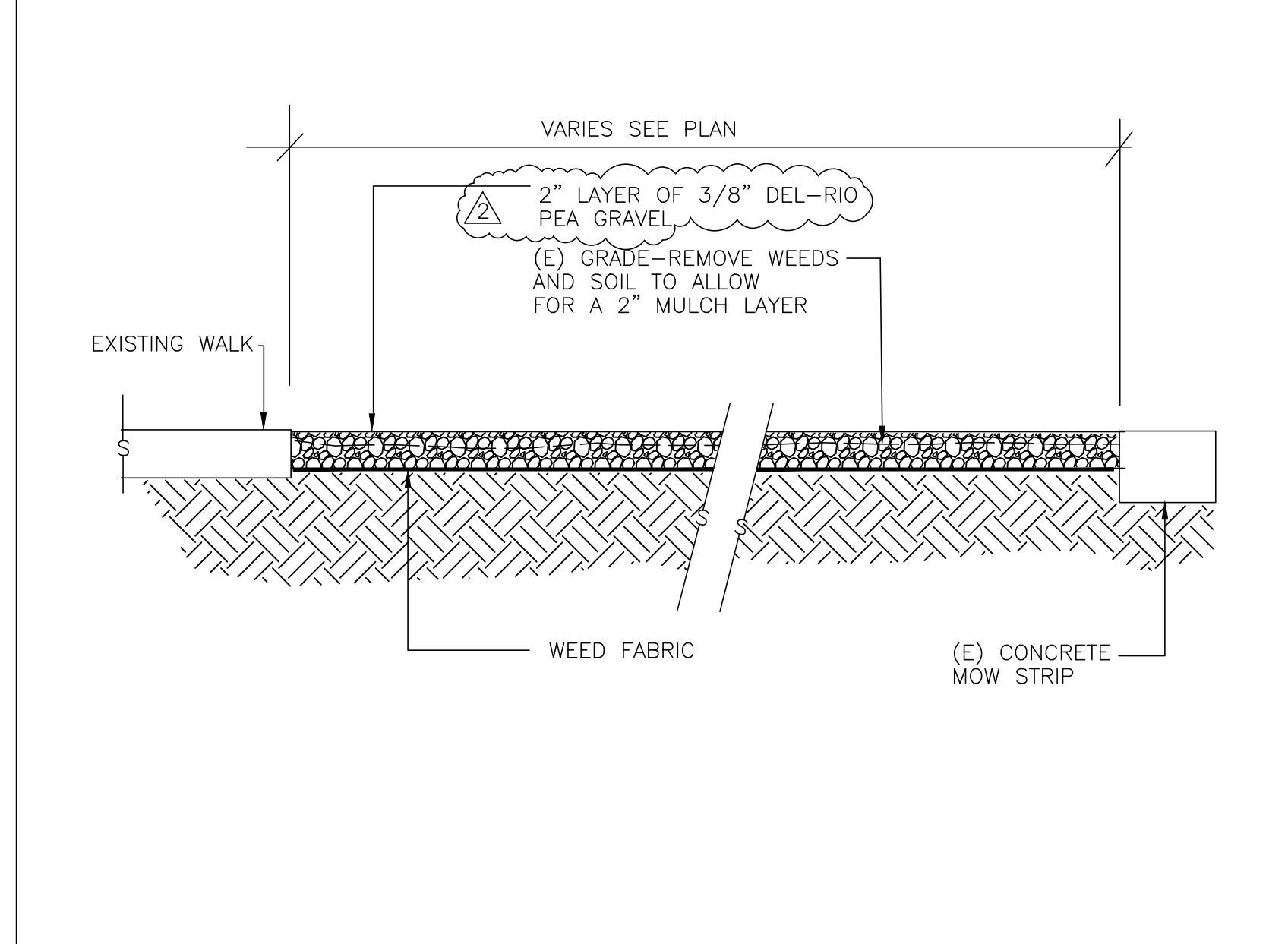


1 TREE STAKING SCALE = N.T.S.

2 PLANTING DETAIL FOR TREES AND SHRUBS SCALE = N.T.S.

3 ROCK BORDER NTS

4 ROCK MULCH NTS

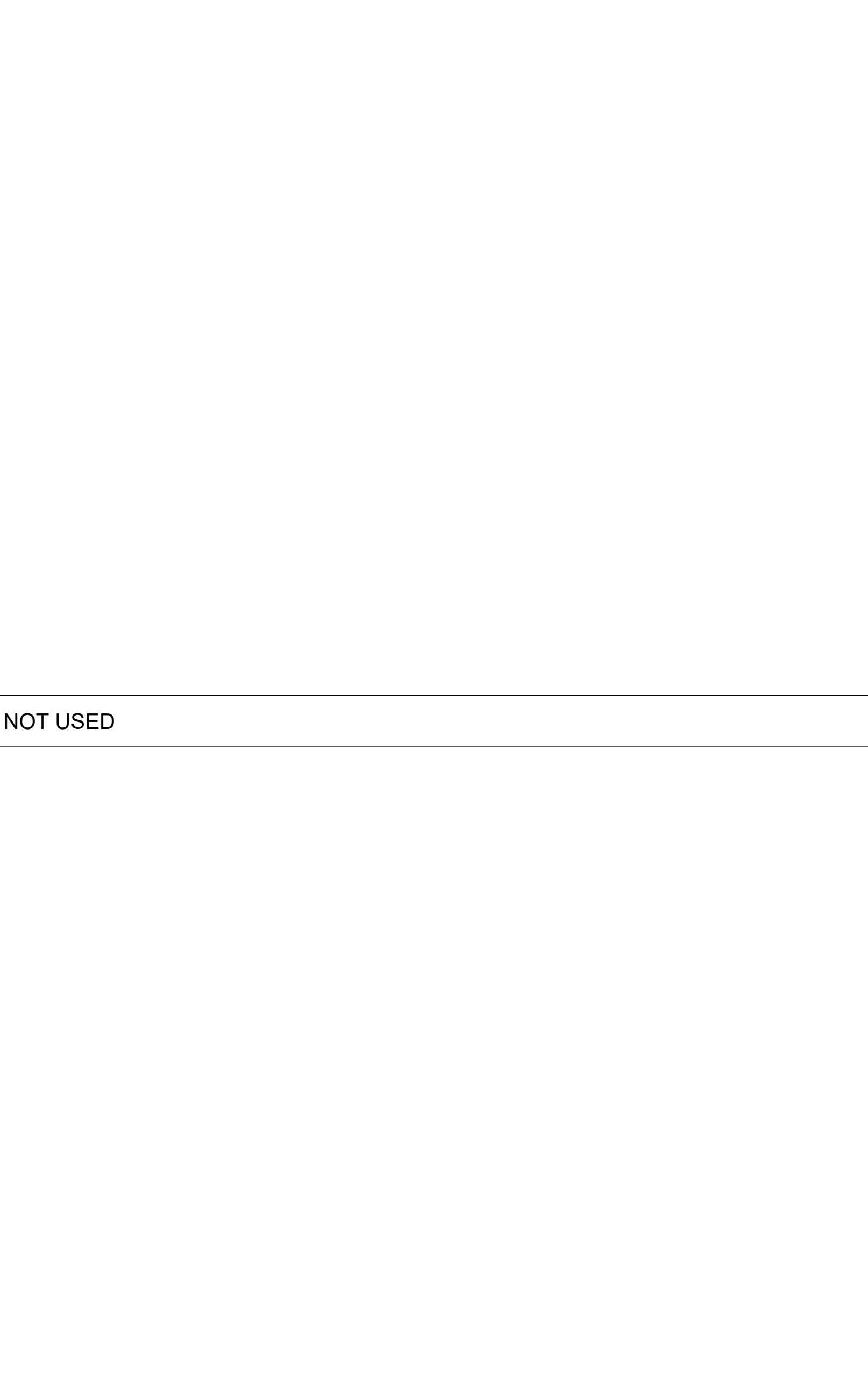
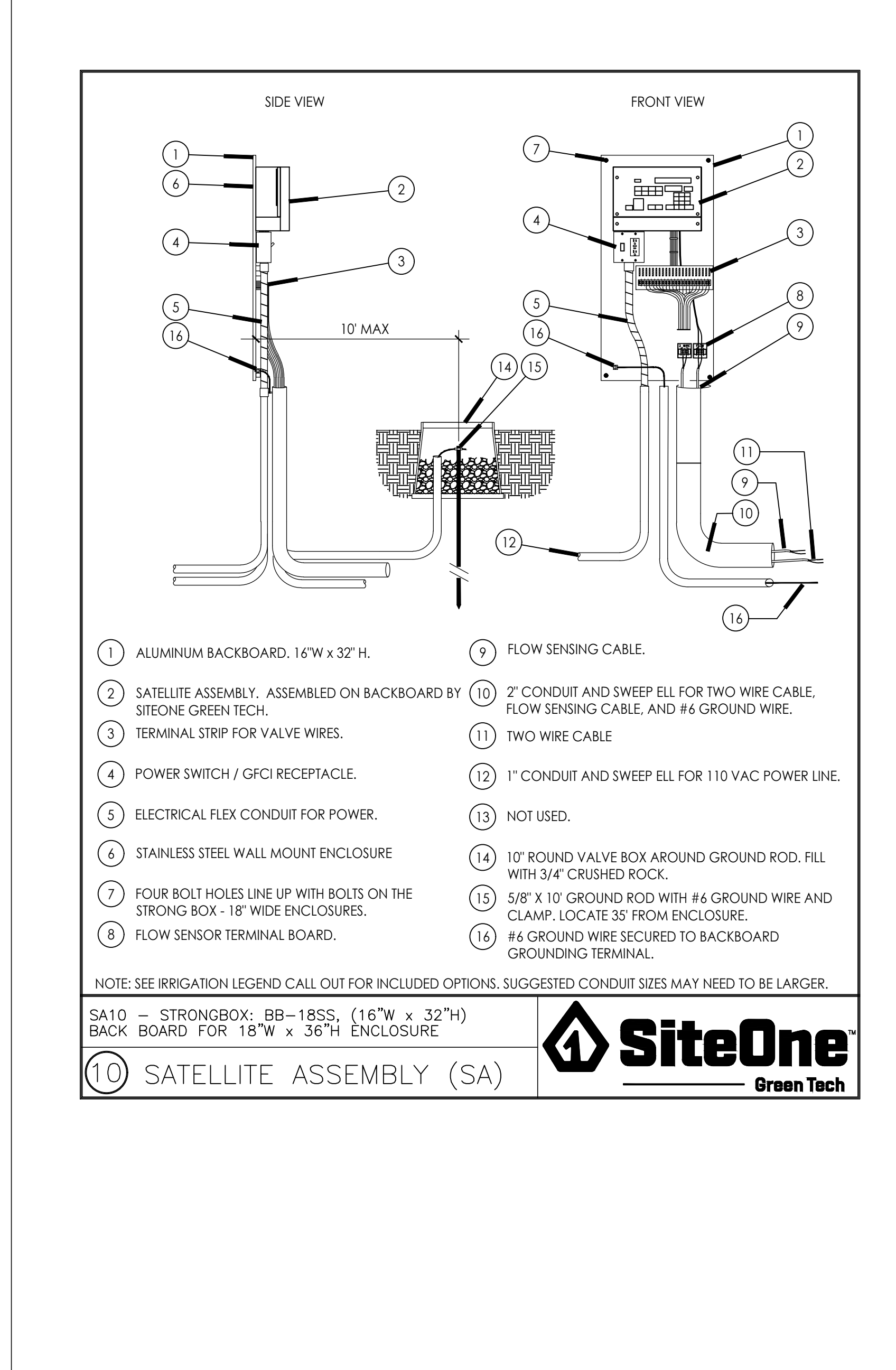


5 ROCK MULCH NTS

6 GRAVEL MULCH NTS

7 ROCK MULCH NTS

8 AUTO CONTROLLER INTERIOR WALL MOUNT - SECTION NTS



9 AUTO CONTROLLER ASSEMBLY FOR WALL MOUNT

10 NOT USED

10 NOT USED

10 NOT USED