

UNDERGROUND SERVICE ALERT
 CALL: TOLL FREE 1-800-527-2600
 TWO WORKING DAYS BEFORE YOU DIG

REVISIONS

NO.	DATE	BY	DESCRIPTION
1	8-1-24	PJ	ADDENDUM NO. 1

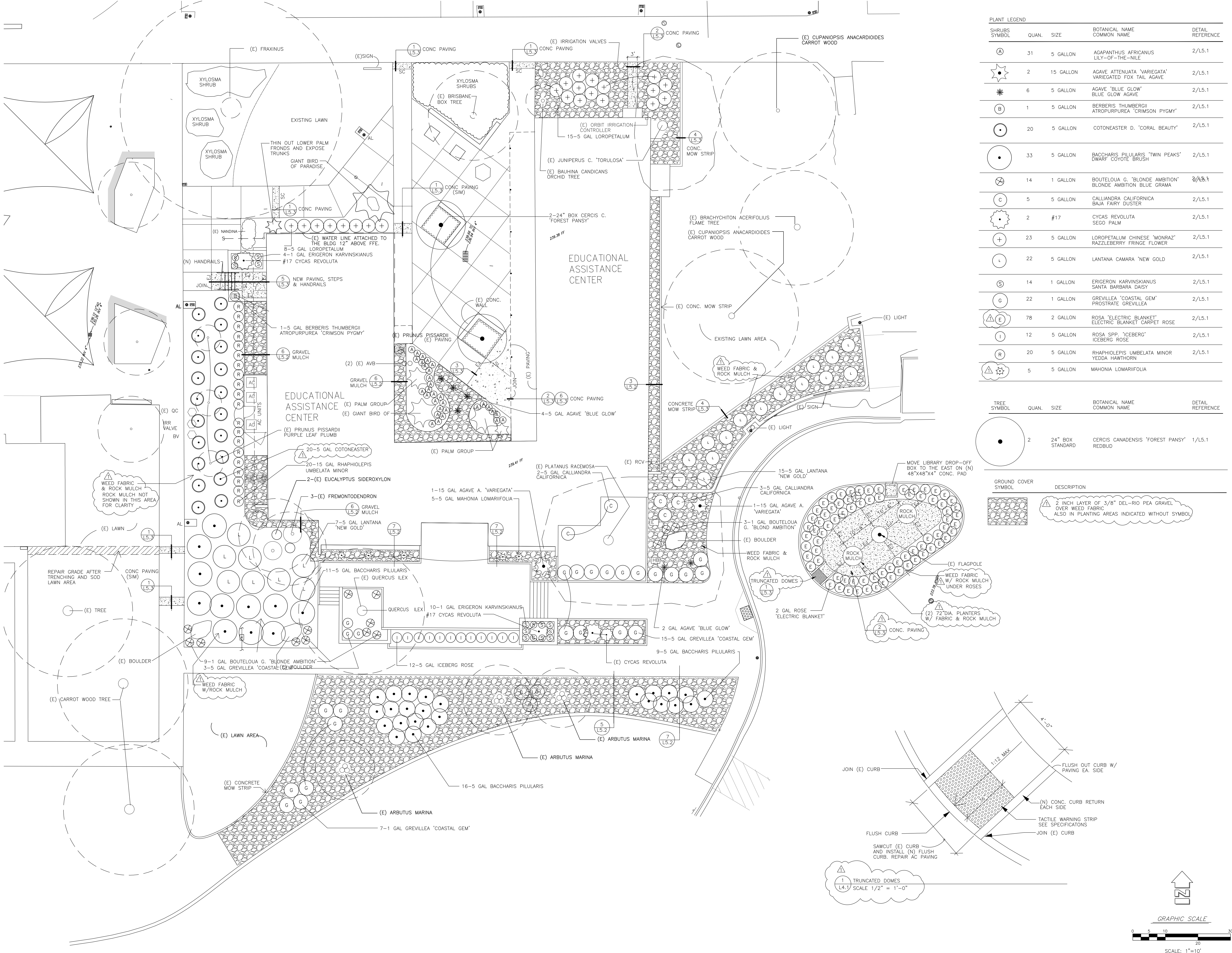
CLIENT
 VENTURA COUNTY COMMUNITY COLLEGE DISTRICT
 701 EAST DAILY DRIVE, SUITE 200
 CAMARILLO, CA 93010

SHEET TITLE
LANDSCAPE RENOVATION
 PROJECT
 VENTURA COLLEGE
 ADMINISTRATION BUILDING
 LANDSCAPE RENOVATION
 4887 TELEGRAPH ROAD
 VENTURA, CA 93003

DRAWN: PJ
 CHECKED: []
 PRINTED FOR REVIEW: 3/20/24
 PRINTED FOR BID: 7-5-24

DRAWING
L4.1
 SHEET 5 OF 8
 PROJECT No. 23.31

THESE DRAWINGS, SPECIFICATIONS AND DESIGNS ARE INSTRUMENTS OF PROFESSIONAL SERVICES AND AS SUCH ARE THE PROPERTY OF JORDAN, GILBERT & BAIN LANDSCAPE ARCHITECTS, INC. REPRODUCTION OR OTHER USE NOT AUTHORIZED BY JORDAN, GILBERT & BAIN IS PROHIBITED WITHOUT WRITTEN APPROVAL.



PLANT LEGEND

SHRUBS SYMBOL	QUAN.	SIZE	BOTANICAL NAME COMMON NAME	DETAIL REFERENCE
(A)	31	5 GALLON	AGAPANTHUS AFRICANUS LILY-OF-THE-NILE	2/L5.1
(*)	2	15 GALLON	AGAVE ATTENUATA 'VARIEGATA' VARIEGATED FOX TAIL AGAVE	2/L5.1
(*)	6	5 GALLON	AGAVE 'BLUE GLOW' BLUE GLOW AGAVE	2/L5.1
(B)	1	5 GALLON	BERBERIS THUMBERGII ATROPURPUREA 'CRIMSON PYGMY'	2/L5.1
(C)	20	5 GALLON	COTONEASTER D. 'CORAL BEAUTY'	2/L5.1
(D)	33	5 GALLON	BACCHARIS PILULARIS 'TWIN PEAKS' DWARF COYOTE BRUSH	2/L5.1
(E)	14	1 GALLON	BOUTELOUA G. 'BLONDE AMBITION' BLONDE AMBITION BLUE GRAMA	2/L5.1
(F)	5	5 GALLON	CALLIANDRA CALIFORNICA BAJA 'FAIRY' DUSTER	2/L5.1
(G)	2	#17	CYCAS REVOLUTA SEGO PALM	2/L5.1
(H)	23	5 GALLON	LOROPETALUM CHINESE 'MONRAZ' RAZZLEBERRY FRINGE FLOWER	2/L5.1
(I)	22	5 GALLON	LANTANA CAMARA 'NEW GOLD'	2/L5.1
(J)	14	1 GALLON	ERIGERON KARVINSKIANUS SANTA BARBARA DAISY	2/L5.1
(K)	22	1 GALLON	GREVILLEA 'COASTAL GEM' PROSTRATE GREVILLEA	2/L5.1
(L)	78	2 GALLON	ROSA 'ELECTRIC BLANKET' ELECTRIC BLANKET CARPET ROSE	2/L5.1
(M)	12	5 GALLON	ROSA SPP. 'ICEBERG' ICEBERG ROSE	2/L5.1
(N)	20	5 GALLON	RHAMPHOLEPIS UMBELLATA MINOR YEDDA HAWTHORN	2/L5.1
(O)	5	5 GALLON	MAHONIA LOMARIFOLIA	2/L5.1

TREE SYMBOL	QUAN.	SIZE	BOTANICAL NAME COMMON NAME	DETAIL REFERENCE
(P)	2	24" BOX STANDARD	CERCIS CANADENSIS 'FOREST PANSY' REDBUD	1/L5.1

GROUND COVER SYMBOL DESCRIPTION

SYMBOL	DESCRIPTION
(Q)	2 INCH LAYER OF 3/8" DEL-RIO PEA GRAVEL OVER WEED FABRIC ALSO IN PLANTING AREAS INDICATED WITHOUT SYMBOL

1 TRUNCATED DOMES
 L4.1 SCALE 1/2" = 1'-0"

