

MOORPARK COLLEGE TECHNOLOGY BUILDING MAKER'S SPACE HVAC SYSTEM

SHEET INDEX (# OF PAGES TOTAL= 3)

- T1 TITLE SHEET & CAMPUS MAP
- M1 MECHANICAL SCHEDULE & NOTES
- M2 MECHANICAL FLOOR PLAN

SCOPE OF WORK

1. INSTALL NEW AIR HANDLER AND CONNECT TO EXISTING DUCTING.
2. CONNECT TO EXISTING CHILLED AND HOT WATER AT MECHAICAL ROOM.
3. INSTALL NEW CONTROLS.

APPLICABLE CODES

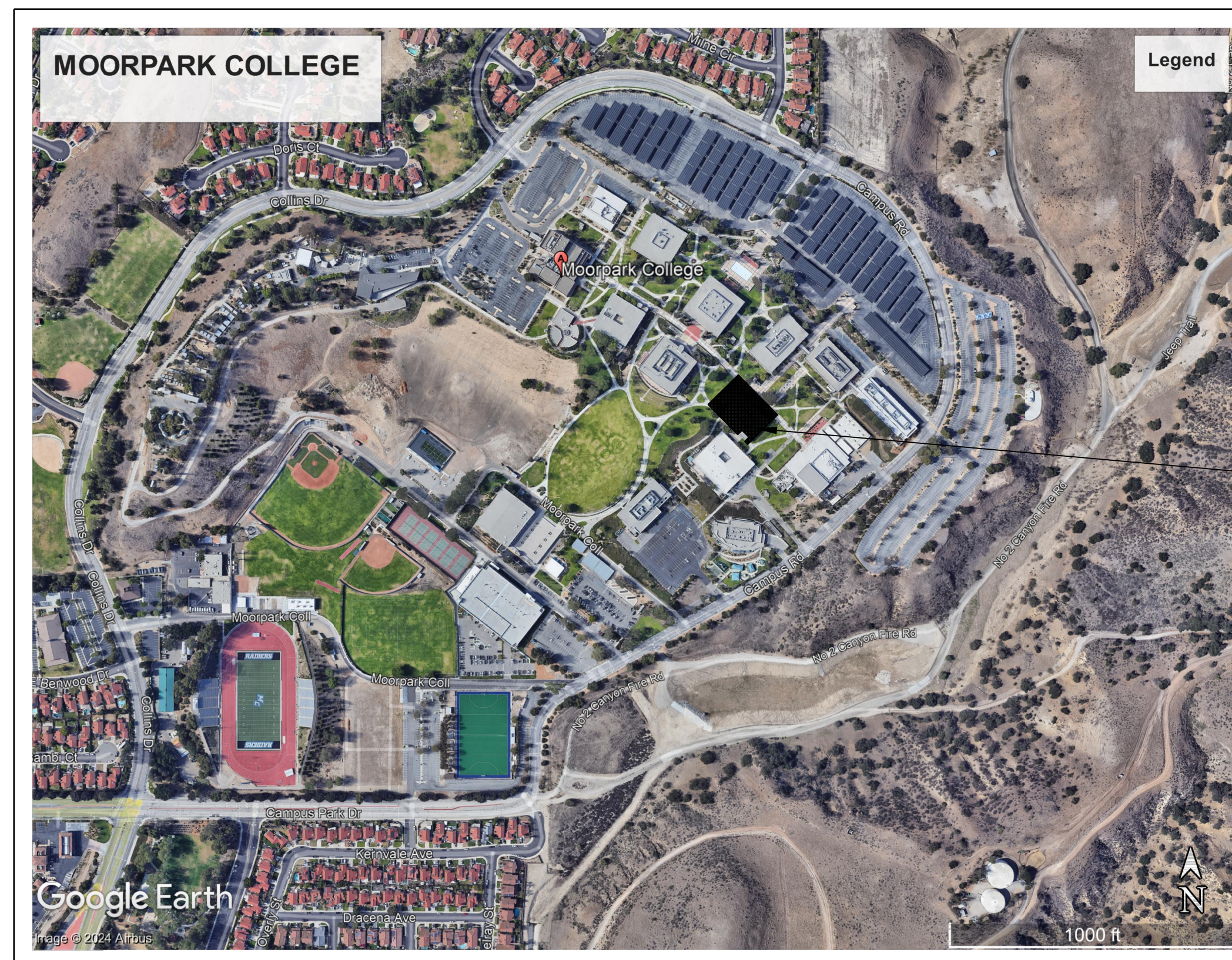
LIST OF CALIFORNIA CODE OF REGULATIONS
 APPLICABLE CODES AS OF JAN. 1ST, 2024
 ALL WORK SHALL CONFORM TO 2022 EDITION TITLE 24, CALIFORNIA CODE OF REGULATIONS (CCR)
 2022 BUILDING STANDARDS ADMINISTRATIVE CODE, PART 1, TITLE 24 CCR
 2022 CALIFORNIA BUILDING CODE (CBC), PART 2, TITLE 24 CCR
 2022 CALIFORNIA ELECTRIC CODE (CEC), PART 3, TITLE 24 CCR
 2022 CALIFORNIA MECHANICAL CODE (CMC), PART 4, TITLE 24 CCR
 2022 CALIFORNIA PLUMBING CODE (CPC), PART 5, TITLE 24 CCR
 2022 CALIFORNIA FIRE CODE (CFC), PART 9, TITLE 24 CCR
 2022 CALIFORNIA REFERENCED STANDARDS CODE (CRSC), PART 11, PART 12, TITLE 24 CCR
 2022 CALIFORNIA ENERGY CODE (CEC), PART 6, TITLE 24 CCR
 PARTIAL LIST OF APPLICABLE NFPA STANDARDS
 NFPA 90A STANDARD FOR THE INSTALLATION OF AIR CONDITIONING SYSTEMS 2021 EDITION

OWNER CONTACT

DIRECTOR OF FACILITIES, MAINTENANCE, AND OPERATIONS
 JOHN SINUTKO
 7075 CAMPUS DRIVE, MOORPARK CA. 93021
 805 378-1454 jsinutko@vcccd.edu

CONSULTANTS

MECHANICAL ENGINEER AND ENGINEER OF RECORD
 HUGH MCTERNAN
 838 E. Front St. Ventura Ca. 93001
 805 653-1722 hugh@aegroupme.com



HATCH LEGEND
 AREA OF CONSTRUCTION

CAMPUS MAP

REV.	DATE

AE Group
 Mechanical Engineers
 838 East Front Street
 Ventura, California 93001
 (805) 653-1722
 hugh@aegroupme.com

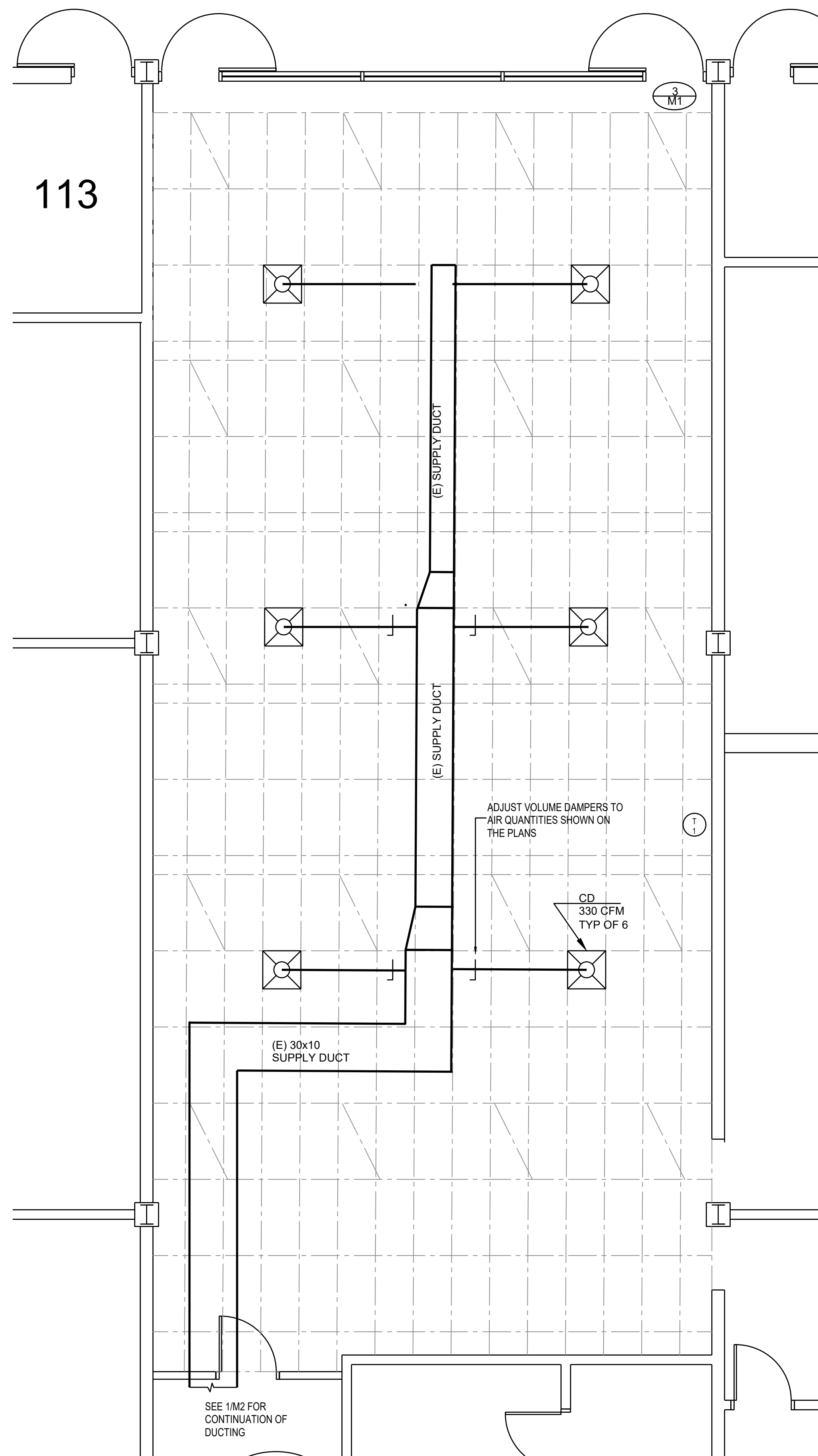
MOORPARK COLLEGE
 7075 CAMPUS ROAD, MOORPARK, CALIFORNIA 93021
 VENTURA COUNTY COMMUNITY COLLEGE DISTRICT

DEPARTMENT OF
 MAINTENANCE & OPERATIONS
 7075 CAMPUS RD.
 MOORPARK, CA. 93021
 PHONE: (805) 378-1454 FAX: (805) 378-1593

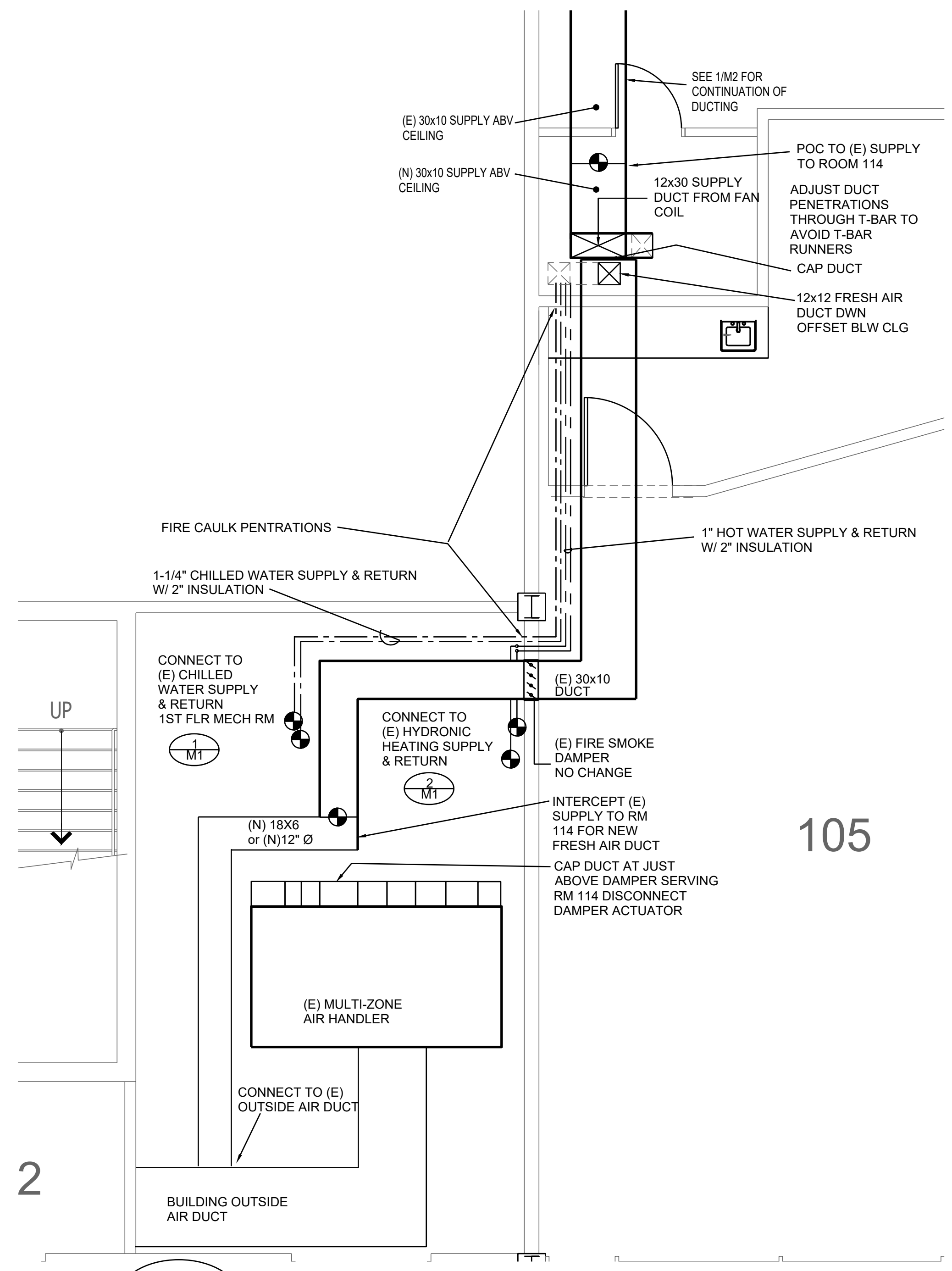
SCALE:
 AS SHOWN
 DATE:
 12-12-24
 BLDG. NO.:

APPLIED ART BUILDING
 COOLING TOWER REPLACEMENT
 TITLE SHEET
 SHEET NO.
T1
 1 OF 4

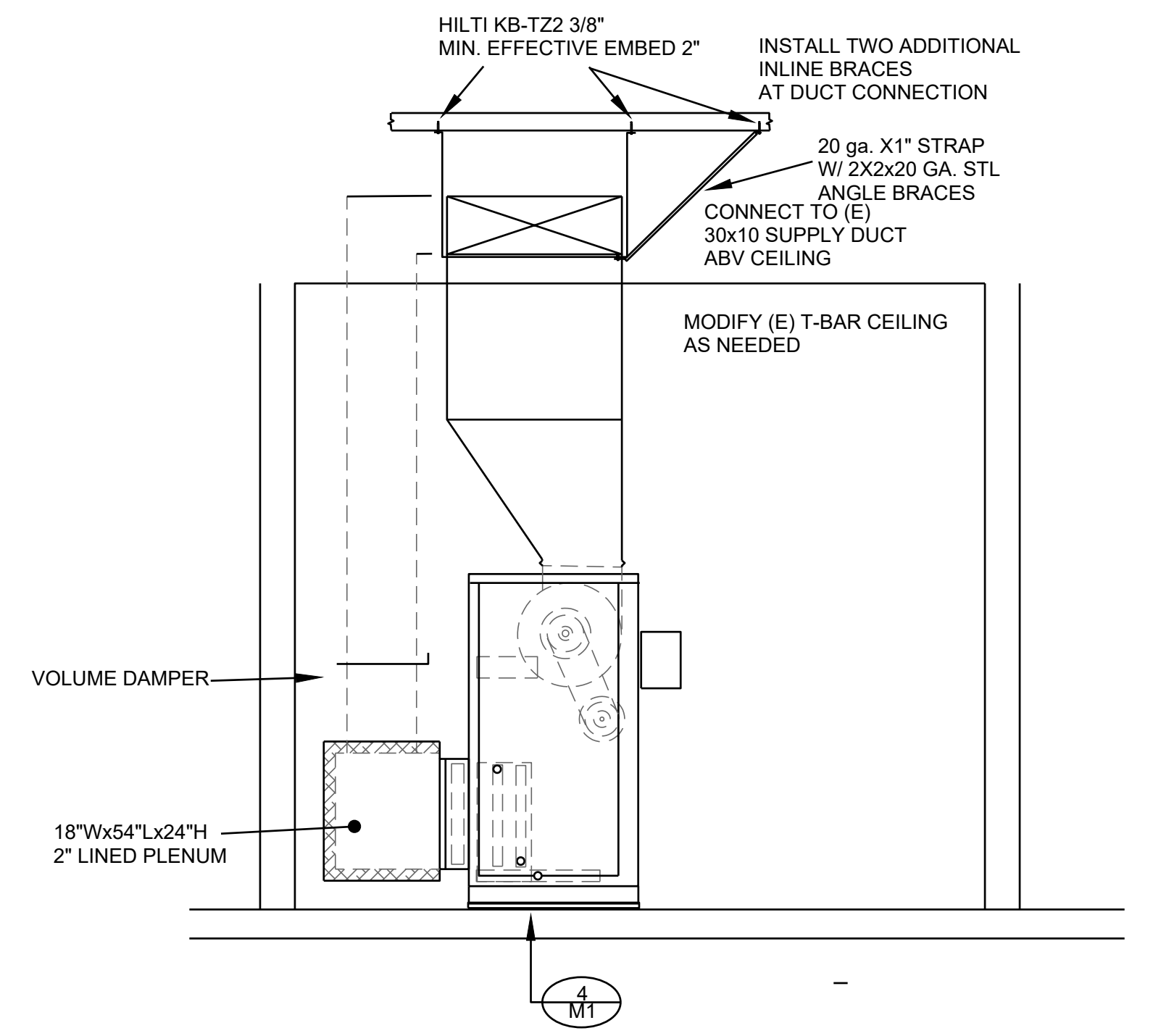




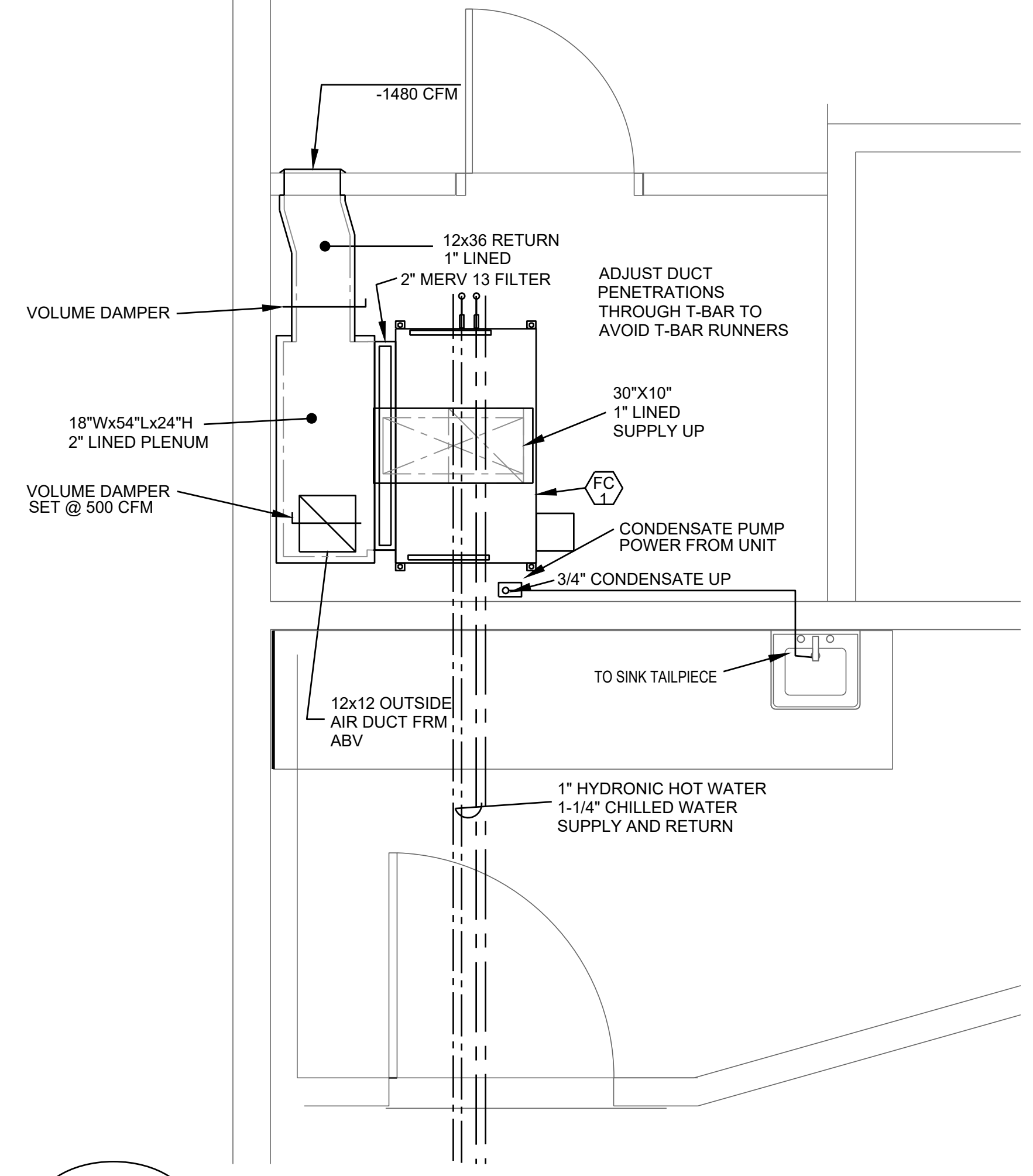
1
M2 CLASSROOM 114 FLOOR PLAN
SCALE: 1/4" = 1'0"



2
M2 MECHANICAL ROOM PLAN
SCALE: 1/4" = 1'0"



4
M2 SECTION AT FAN COIL
SCALE: 1/2" = 1'0"



3
M2 CLOSET MECHANICAL PLAN
SCALE: 1/2" = 1'0"

REV.	DATE

AE Group
Mechanical Engineers
838 East Front Street
Ventura, California 93001
(805) 653-1722
hugh@aeengineers.com

MOORPARK COLLEGE
7075 CAMPUS ROAD, MOORPARK, CALIFORNIA 93021
VENTURA COUNTY COMMUNITY COLLEGE DISTRICT

DEPARTMENT OF MAINTENANCE & OPERATIONS
7075 CAMPUS RD.
MOORPARK, CA. 93021
PHONE: (805) 378-1454 FAX: (805) 378-1593

APPLIED ART BUILDING
COOLING TOWER REPLACEMENT
NOTES AND SCHEDULE
M2
1 OF 4

