

REV	DESCRIPTION	DATE



VENTURA COMMUNITY COLLEGE DISTRICT  
 71 DAY ROAD  
 VENTURA, CALIFORNIA 93003

OXNARD COMMUNITY COLLEGE  
 FIRE ALARM SYSTEM  
 ALTERATIONS AND ADDITIONS  
 4000 SO. ROSE AVENUE OXNARD, CALIFORNIA 93033

DRAWN: LEC	CHECKED: [ ]
JOB NO.: #2037	DATE: 8/2/00

040  
PE

### SYMBOL LIST

- Remote Annunciator
- Battery Cabinet
- Fire Alarm Control Panel (Building)
- Fire Alarm Terminal Cabinet
- Campus Fire Alarm Control Panel
- Signal Power Expander
- Photoelectric Smoke Detector - Door Releasing
- Photoelectric Smoke Detector W/Addressable Base
- Duct Mounted Smoke Detector Addressable
- Thermal Detector - Addressable Base
- Manual Pull Station Interior
- Manual Pull Station Exterior
- Control Module Addressable
- Monitor Module Addressable
- Wall Mounted Horn - Exterior
- Wall Mounted Horn - Interior
- Wall Mounted Horn Strobe - Interior 15cd
- Wall Mounted Horn Strobe - Interior 30cd
- Wall Mounted Horn Strobe - Interior 75cd
- Wall Mounted Horn Strobe - Interior 110cd
- Wall Mounted Interior Strobe 15cd
- Wall Mounted Interior Strobe 30cd
- Wall Mounted Interior Strobe 75cd
- Wall Mounted Interior Strobe 110cd
- Ceiling Mounted Interior Strobe 15cd
- Ceiling Mounted Interior Strobe 30cd
- Ceiling Mounted Interior Strobe 75cd
- Ceiling Mounted Interior Strobe 95cd
- Ceiling Mounted Interior Strobe 110cd
- Ceiling Mounted Horn Strobe 15cd
- Ceiling Mounted Horn Strobe 30cd
- Ceiling Mounted Horn Strobe 75cd
- Ceiling Mounted Horn Strobe 95cd
- Ceiling Mounted Horn Strobe 110cd
- Magnetic Door Holder
- Water Flow Switch
- Tamper Switch
- Control Relay
- Junction Box
- Heat/Vent Unit Duct Type Smoke Detector - (addressable) w/Remote Ann.

### ABBREVIATIONS

- A/P Access Panel
- ACS All Clear System
- ACW All Clear Wiring
- BBS Back Box Skirt
- CM Control Module (AOM)
- (Magnetic) Door Holder
- (E) Existing
- EH Exterior Horn
- EMP Exterior Manual Pull Station
- EP Electrical Panel
- ES Exterior Siren
- FA Fire Alarm
- FACP Fire Alarm Control Panel
- FATC Fire Alarm Terminal Cabinet
- FPL Fire Alarm Power Limited Cable
- H Interior Horn
- HS Horn Strobe
- IDC Initiation Device Circuit
- IS Interior Strobe
- MP Manual Pull Station Interior
- MM Monitor Module
- (N) New
- PS Notification Appliance Circuit
- (R) Remove
- (RL) Relocate
- RTB Remote Test Button (Duct Detectors)
- SSB Smoke Fire Detector
- SM NAC Synchronizing Module
- SMR Surface Mounted Raceway
- TD Thermal Detector
- TS Waterflow Tamper Switch
- WP Weather Proof
- WF Water Flow Switch

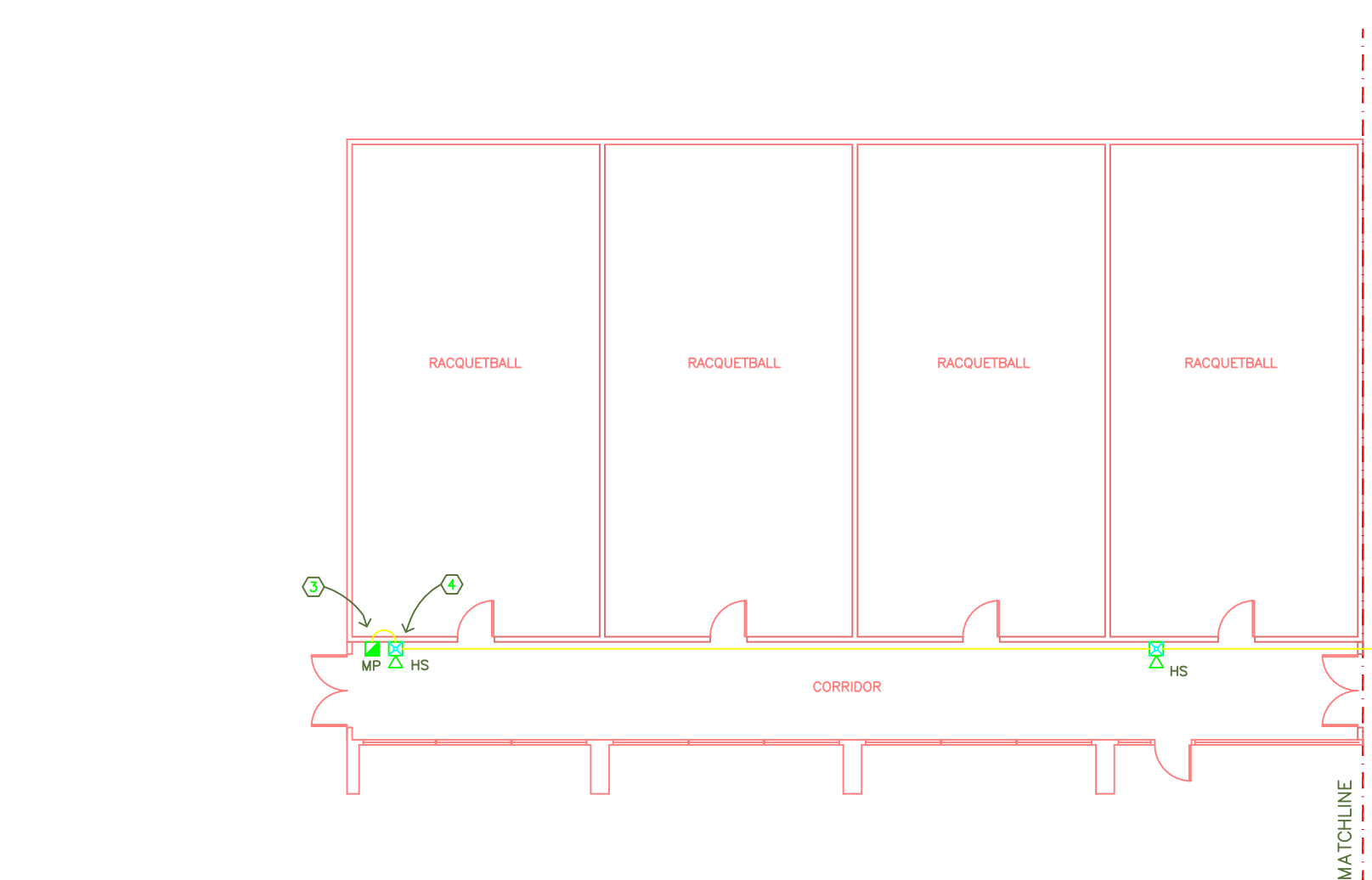
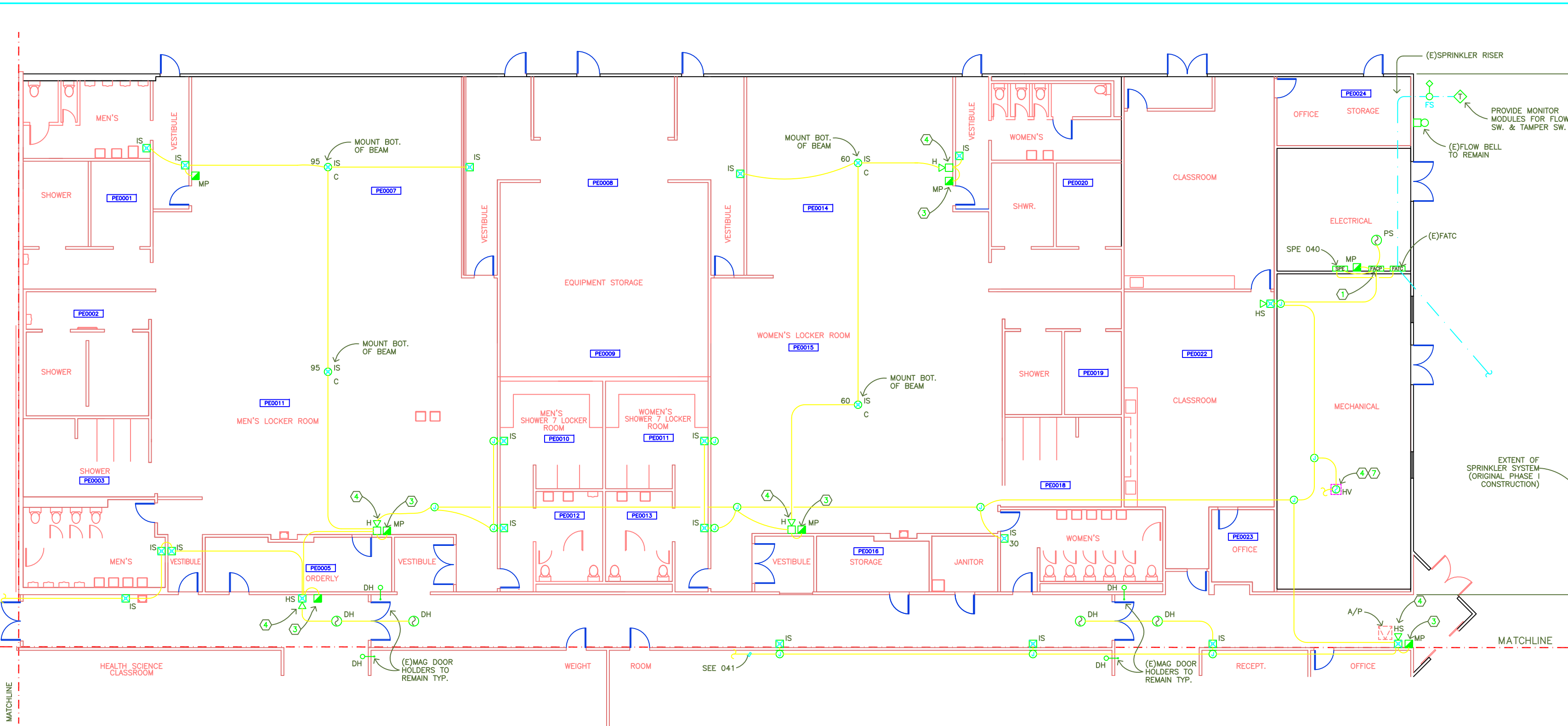
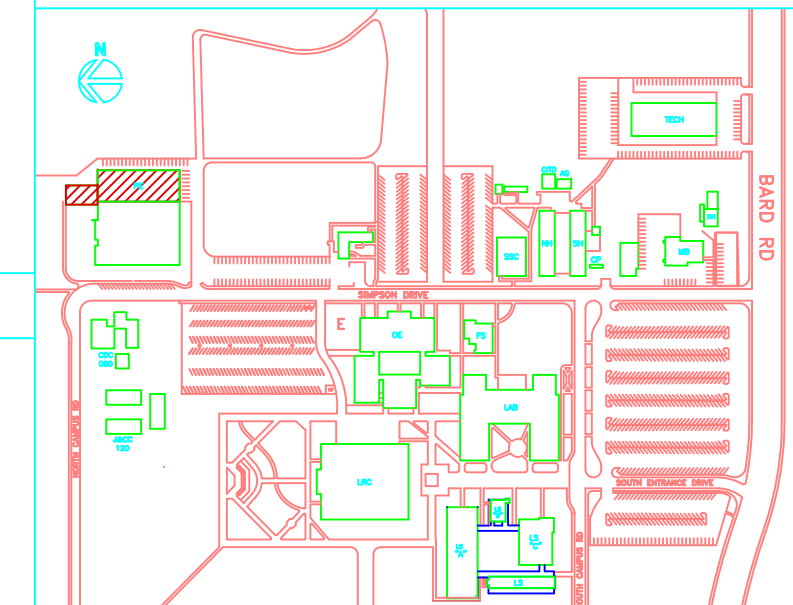
### FIRE ALARM WIRING NOTES

- ◇ 2#14 IDC
- ◇ 4#14 IDC(S)
- ◇ 2#12 NAC Horns
- ◇ 4#12 NAC Horns
- ◇ 2#12 NAC Strobes
- ◇ 4#12 NAC Strobes
- ◇ 2#12, 2#14, 1#12 (Common) Ann.
- ◇ 2#12 (24VDC)

### NOTES:

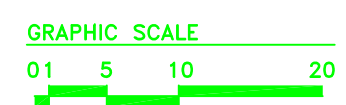
- 1 (R)(E) FIRE ALARM PANEL. INSTALL NEW. CONNECT TO (E)120V CIRCUIT.
- 2 INSTALL (N)DIU IN (E)FACP
- 3 (R)(E) MANUAL PULL STATION. INSTALL NEW. SEE DETAILS FOR MTG. HTS.
- 4 (R)(E) DEVICE. INSTALL NEW. SEE DETAILS FOR MTG. HTS.
- 5 (R)(E) THERMAL DETECTOR. INSTALL NEW
- 6 CONNECT(N) MODULE TO (E)RANGE HOOD FIRE SUPPRESSION SYSTEM.
- 7 WIRE DETECTOR WITH RELAY & TRANSFORMER TO SHUT DOWN HV UNIT.
- 8 PROVIDE PROTECTIVE COVERS FOR ALL DEVICES MOUNTED IN GYMNASIUM.
- 9 PROVIDE REMOTE TEST STATION WHERE REQUIRED. TO LOCATE DUCT DETECTOR. PROVIDE INDICATION ON CEILING FOR LOCATING DUCT DETECTOR.

### LOCATION PLAN



### FIRE ALARM PLAN - PHYSICAL EDUCATION BUILDING

SCALE: 1/8"=1'-0"



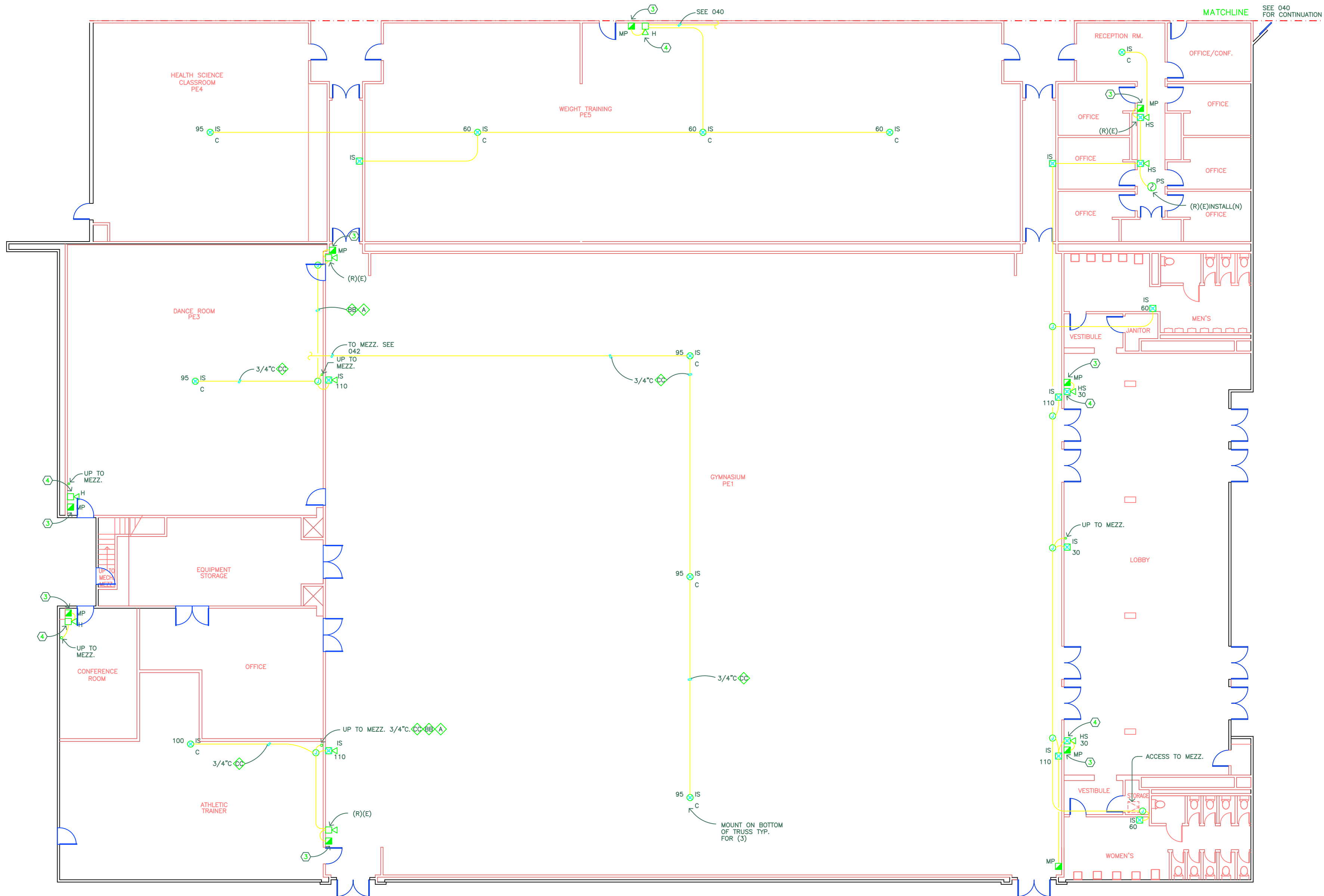
IDENTIFICATION STAMP  
 DIV. OF THE STATE ARCHITECT  
 OFFICE OF REGULATION SERVICES

APPL [ ]

AC [ ] FLS [ ] SS [ ]

DATE [ ]

EOR	DSA
-----	-----



### SYMBOL LIST

ARND	Remote Annunciator
BCB	Battery Cabinet
FACP	Fire Alarm Control Panel (Building)
FATC	Fire Alarm Terminal Cabinet
CFACP	Campus Fire Alarm Control Panel
SPCE	Signal Power Expander
DH	Photoelectric Smoke Detector - Door Releasing
PS	Photoelectric Smoke Detector W/Addressable Base
HV	Duct Mounted Smoke Detector Addressable
TD	Thermal Detector - Addressable Base
MP	Manual Pull Station Interior
EMP	Manual Pull Station Exterior
CM	Control Module Addressable
MM	Monitor Module Addressable
EH	Wall Mounted Horn - Exterior
H	Wall Mounted Horn - Interior
HS 15c	Wall Mounted Horn Strobe - Interior 15cd
HS 30c	Wall Mounted Horn Strobe - Interior 30cd
HS 75c	Wall Mounted Horn Strobe - Interior 75cd
HS 110c	Wall Mounted Horn Strobe - Interior 110cd
IS 15c	Wall Mounted Interior Strobe 15cd
IS 30c	Wall Mounted Interior Strobe 30cd
IS 75c	Wall Mounted Interior Strobe 75cd
IS 110c	Wall Mounted Interior Strobe 110cd
IS C	Ceiling Mounted Interior Strobe 15cd
IS 30 C	Ceiling Mounted Interior Strobe 30cd
IS 75 C	Ceiling Mounted Interior Strobe 75cd
IS 110 C	Ceiling Mounted Interior Strobe 110cd
IS C	Ceiling Mounted Interior Strobe 30cd
IS 75 C	Ceiling Mounted Interior Strobe 75cd
IS 95 C	Ceiling Mounted Interior Strobe 95cd
IS 110 C	Ceiling Mounted Interior Strobe 110cd
IS C	Ceiling Mounted Horn Strobe 15cd
IS 30 C	Ceiling Mounted Horn Strobe 30cd
IS 75 C	Ceiling Mounted Horn Strobe 75cd
IS 95 C	Ceiling Mounted Horn Strobe 95cd
IS 115 C	Ceiling Mounted Horn Strobe 110cd
MDH	Magnetic Door Holder
WFS	Water Flow Switch
TS	Tamper Switch
R	Control Relay
J	Junction Box
HVU	Heat/Vent Unit Duct Type Smoke Detector - (addressable) w/Remote Ann.

### ABBREVIATIONS

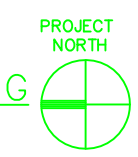
A/P	Access Panel
ACS	All Clear System
ACW	All Clear Wiring
BBS	Back Box Skirt
CM	Control Module (AOM)
DH	(Magnetic) Door Holder
(E)	Existing
EH	Exterior Horn
EMP	Exterior Manual Pull Station
EP	Electrical Panel
ES	Exterior Siren
FA	Fire Alarm
FACP	Fire Alarm Control Panel
FATC	Fire Alarm Terminal Cabinet
FPL	Fire Alarm Power Limited Cable
H	Interior Horn
HS	Horn Strobe
IDC	Initiation Device Circuit
IS	Interior Strobe
MP	Manual Pull Station Interior
MM	Monitor Module
(N)	New
PS	Notification Appliance Circuit
(R)	Remove
(RL)	Relocate
RTB	Remote Test Button (Duct Detectors)
SBB	Smoke Fire Detector
SM	NAC Synchronizing Module
SMR	Surface Mounted Raceway
TD	Thermal Detector
TS	Waterflow Tamper Switch
WP	Weather Proof
WF	Water Flow Switch

### FIRE ALARM WIRING NOTES

⬡	2#14 IDC
⬢	4#14 IDC(S)
⬤	2#12 NAC Horns
⬥	4#12 NAC Horns
⬦	2#12 NAC Strobes
⬧	4#12 NAC Strobes
⬨	2#12, 2#14, 1#12 (Common) Ann.
⬩	2#12 (24VDC)

## FIRE ALARM PLAN -- PHYSICAL EDUCATION BUILDING

SCALE: 1/8"=1'-0"



- ### NOTES:
- ① (R)(E) FIRE ALARM PANEL. INSTALL NEW. CONNECT TO (E)120V CIRCUIT.
  - ② INSTALL (N)DIU IN (E)FACP
  - ③ (R)(E) MANUAL PULL STATION. INSTALL NEW. SEE DETAILS FOR MTG. HTS.
  - ④ (R)(E) DEVICE. INSTALL NEW. SEE DETAILS FOR MTG. HTS.
  - ⑤ (R)(E) THERMAL DETECTOR. INSTALL NEW
  - ⑥ CONNECT(N) MODULE TO (E)RANGE HOOD FIRE SUPPRESSION SYSTEM.
  - ⑦ WIRE DETECTOR WITH RELAY & TRANSFORMER TO SHUT DOWN HV UNIT.
  - ⑧ PROVIDE PROTECTIVE COVERS FOR ALL DEVICES MOUNTED IN GYMNASIUM.
  - ⑨ PROVIDE REMOTE TEST STATION WHERE REQUIRED. TO LOCATE DUCT DETECTOR. PROVIDE INDICATION ON CEILING FOR LOCATING DUCT DETECTOR.

