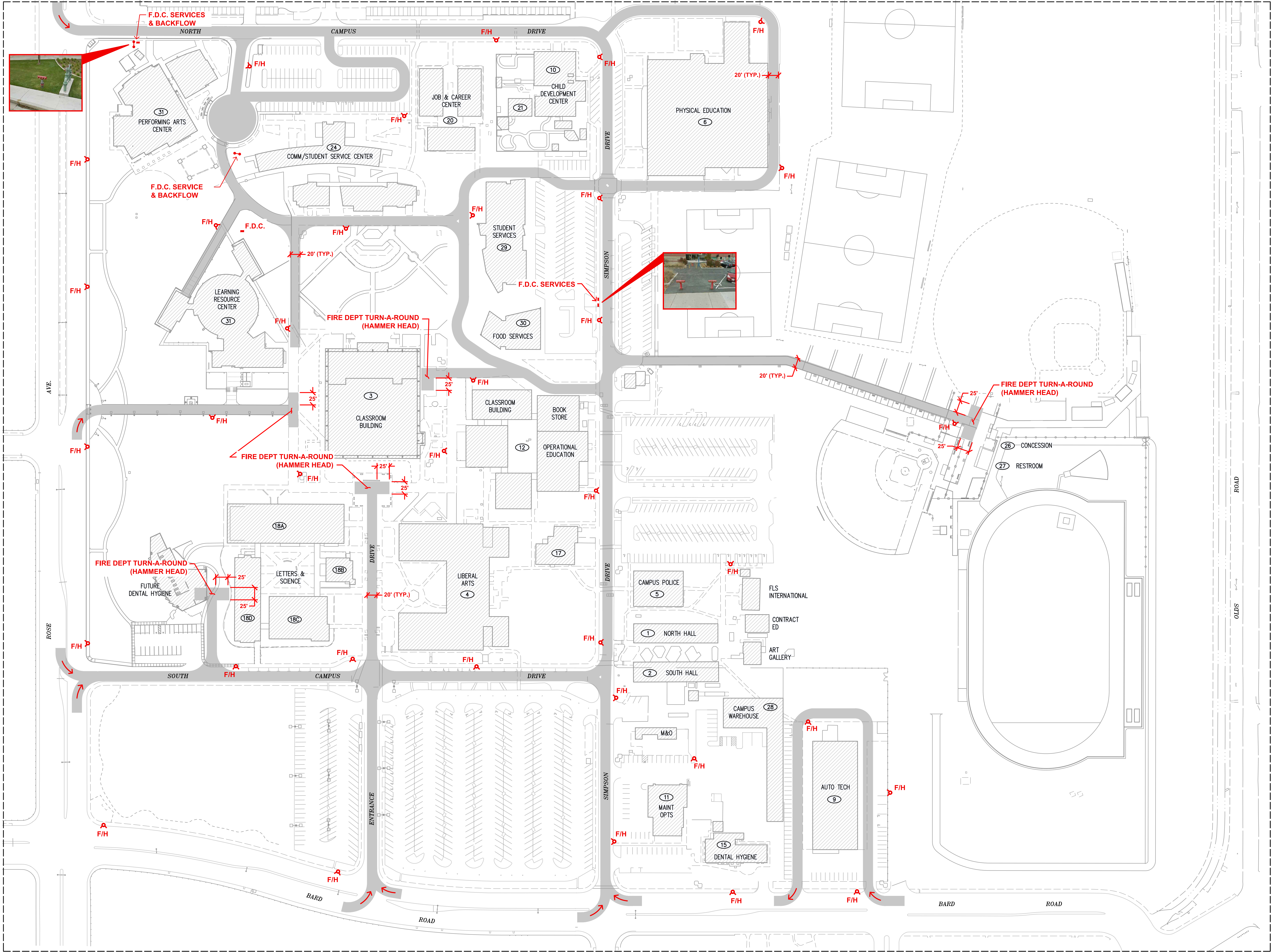


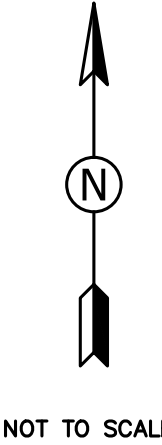
This project record document, drawings and specifications, have been prepared on the basis of data compiled and furnished by others. Roy E. Colbert, Architect, will not be responsible for errors or omissions resulting from that data being incorporated into this document. These drawings and designs, constitute an instrument of professional service and are the sole property of Roy E. Colbert, Architect. These documents may be used for any other project without the written authorization of Roy E. Colbert, Architect.



LEGEND

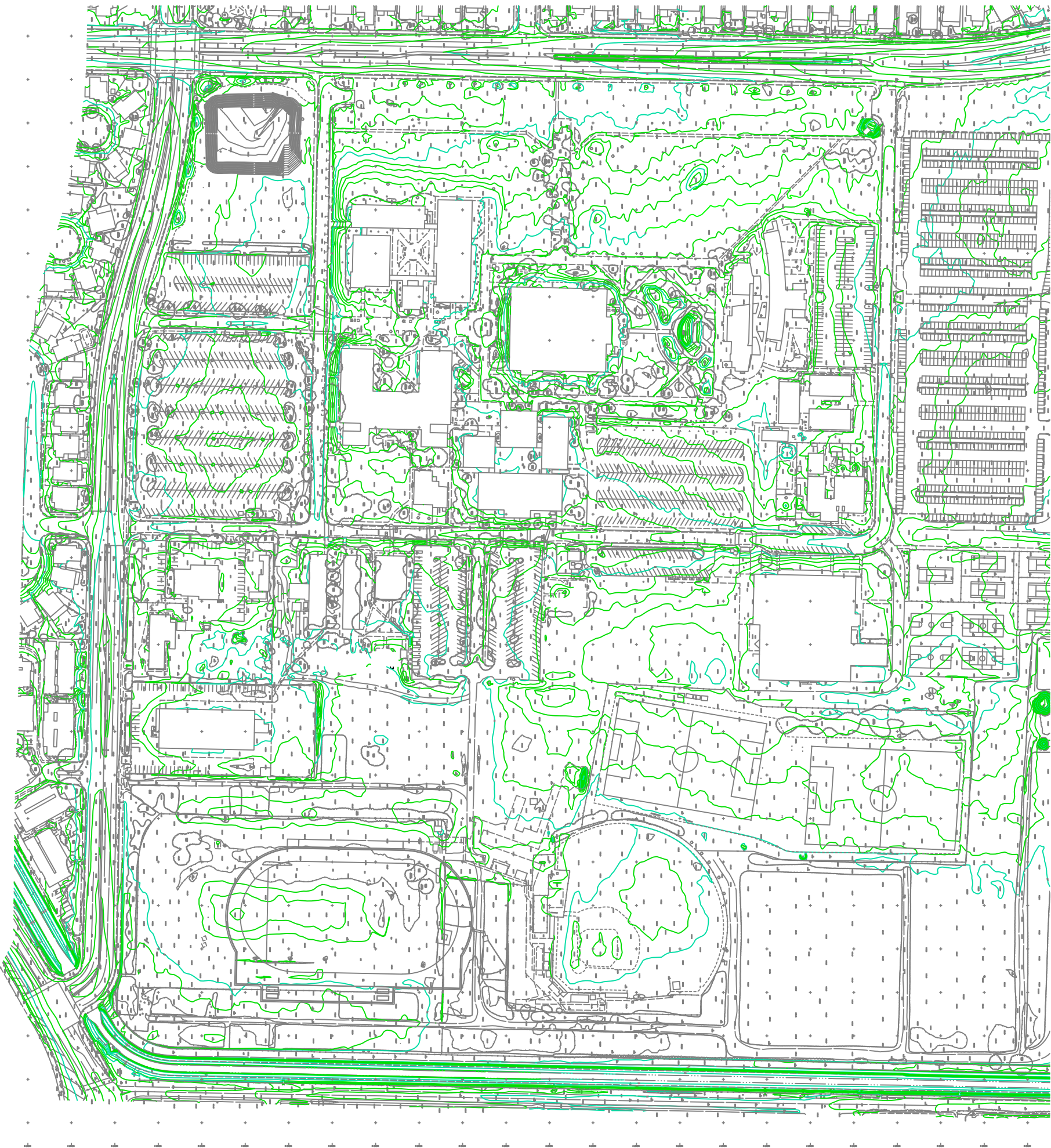
DRIVE EXISTING 20' WIDE MIN. FIRE ACCESS LANE

F/H A EXISTING FIRE HYDRANT



REVISIONS	DATE	BY
ROY E COLBERT		
ARCHITECTURE PLANNING DESIGN		
1891 GOODYEAR AVE., #607 VENTURA, CA 93003		
805 / 650 . 9590 PH 805 / 650 . 9589 FX rcolb@abcglobal.net CALIFORNIA C12050 N.C.A.R.B.		
This project has been designed by me, or under my direct supervision.		
OXNARD COLLEGE		
4000 SOUTH ROSE AVE. OXNARD, CA 93033		
FIRE ACCESS PLAN		
SHEET NAME		
15 DEC. 2011		
DATE		
AS SHOWN		
SCALE		
PROJECT		
SHEET NUMBER 1 OF 1 SHEETS		

THIS PLAN IS BASED UPON DATA COMPILED AND FURNISHED BY OTHERS.



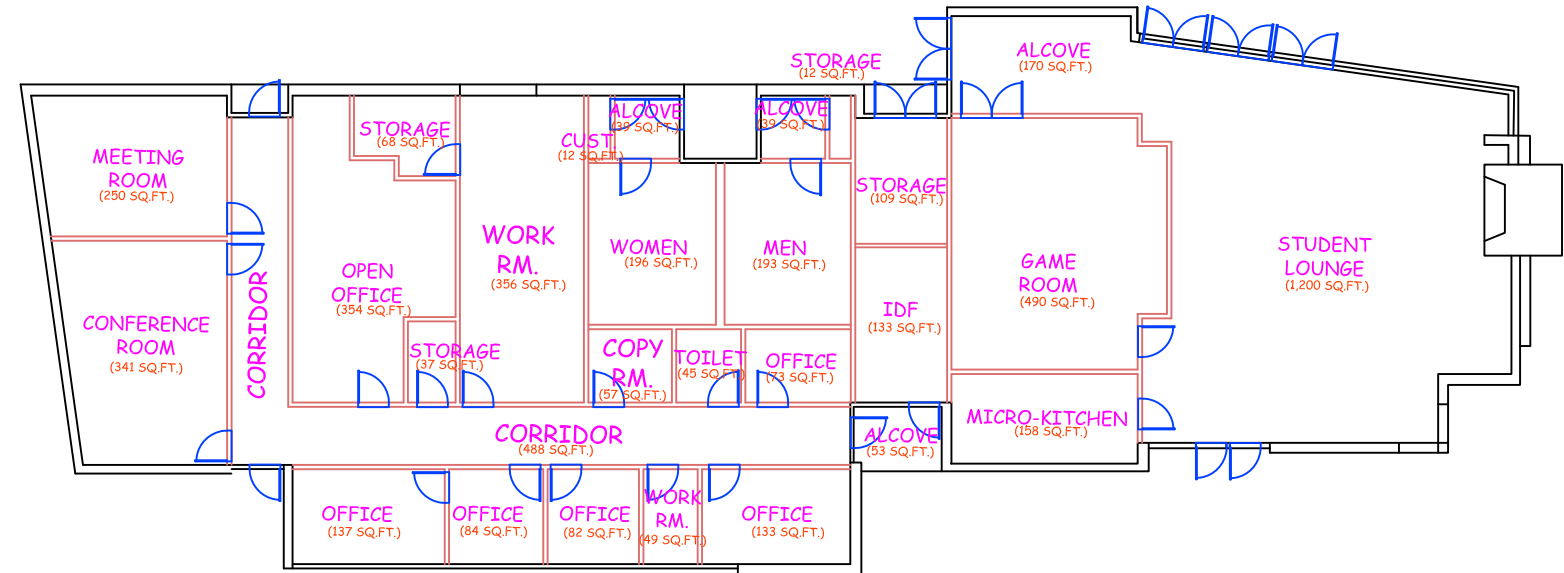
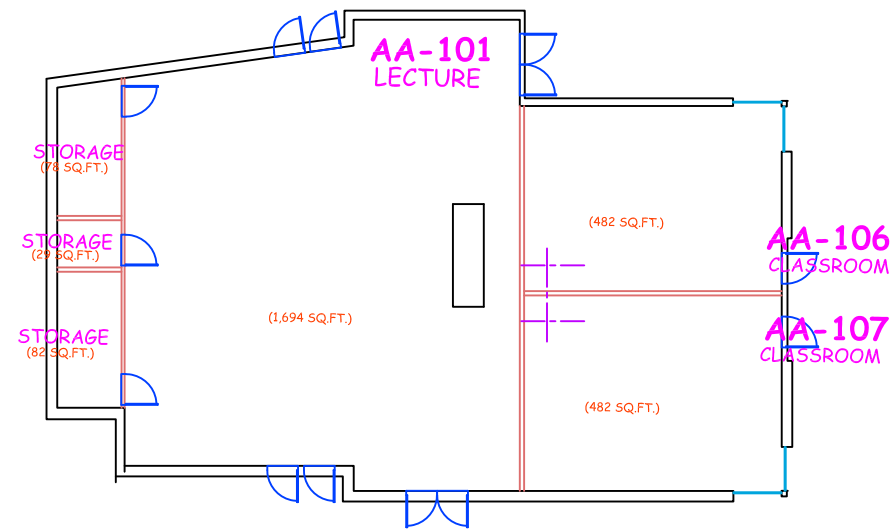
OXNARD COLLEGE CAMPUS

2004 TOPO PLAN

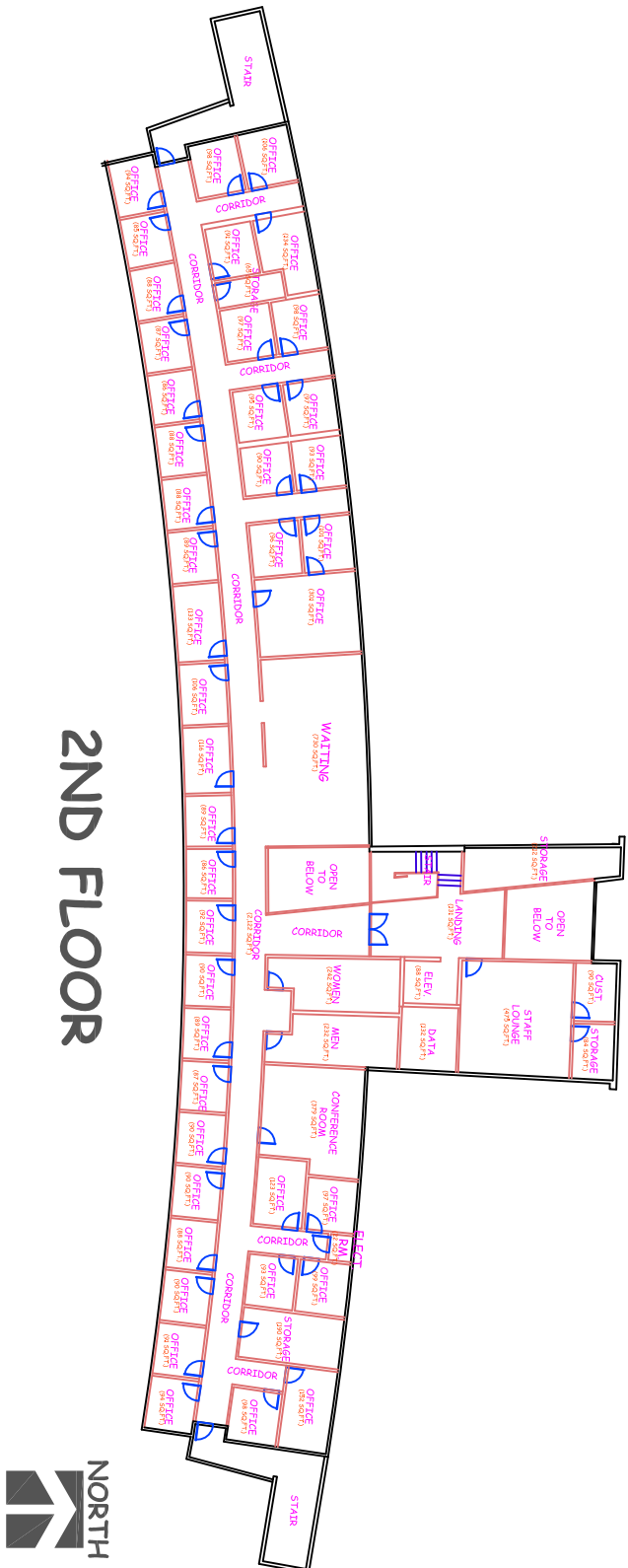
NTS



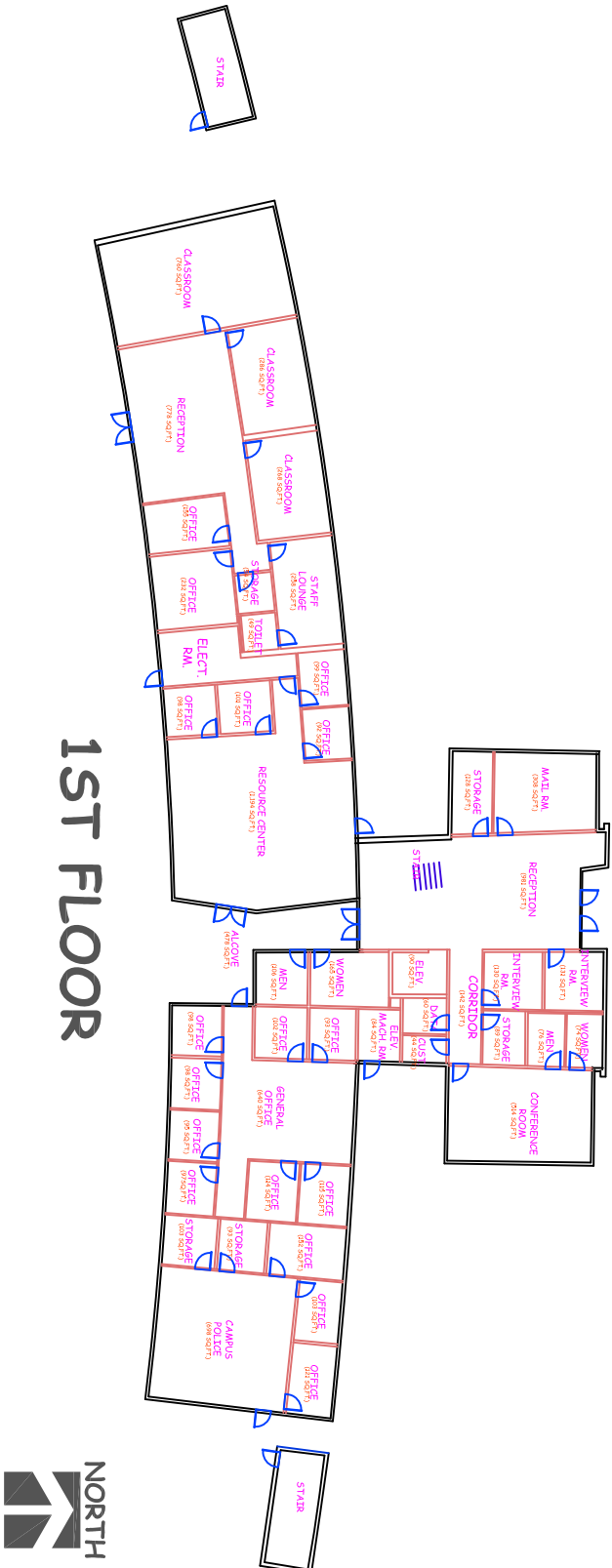
NORTH



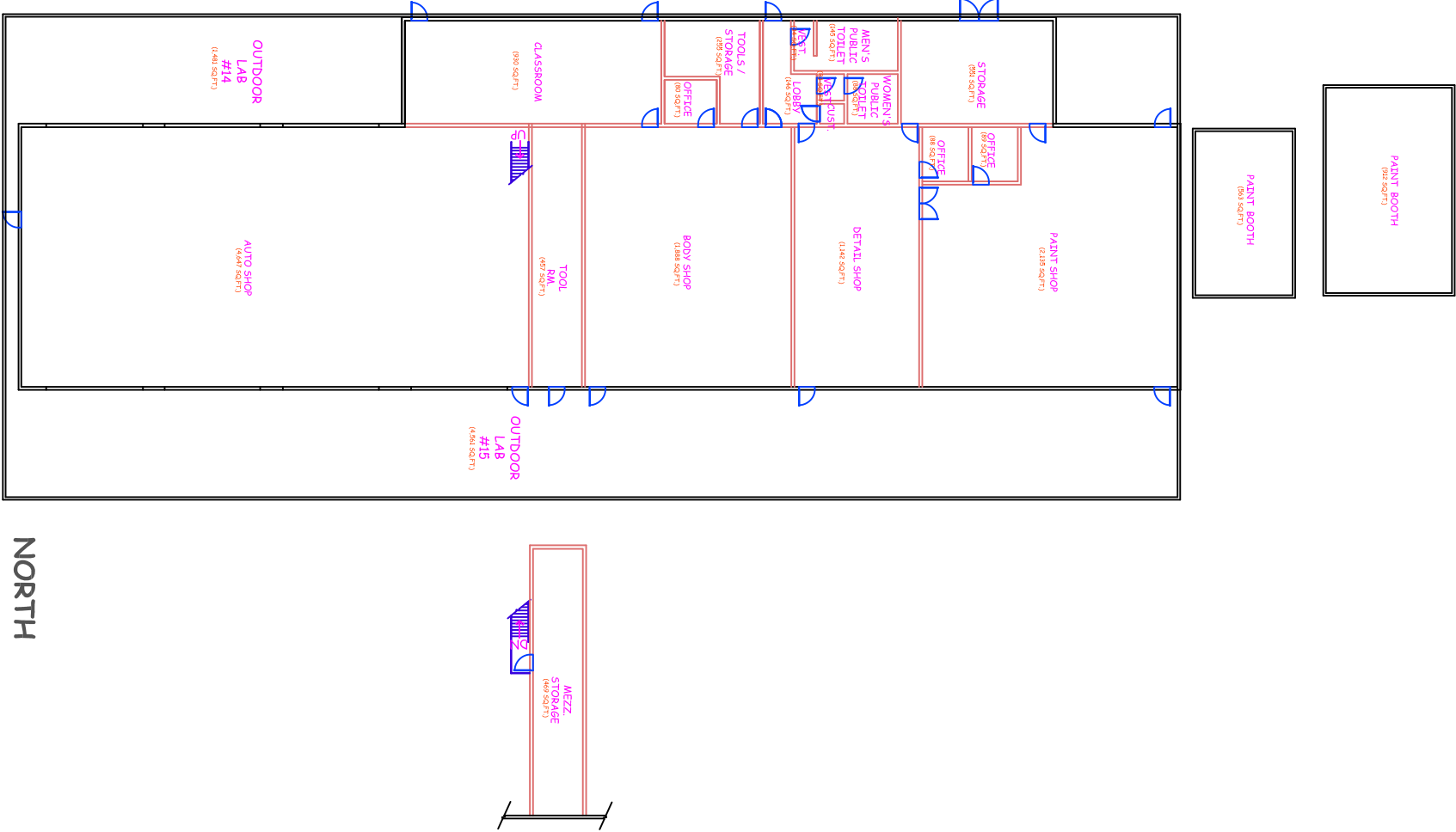
BLDG. 24B ADMIN. ANNEX / ASG



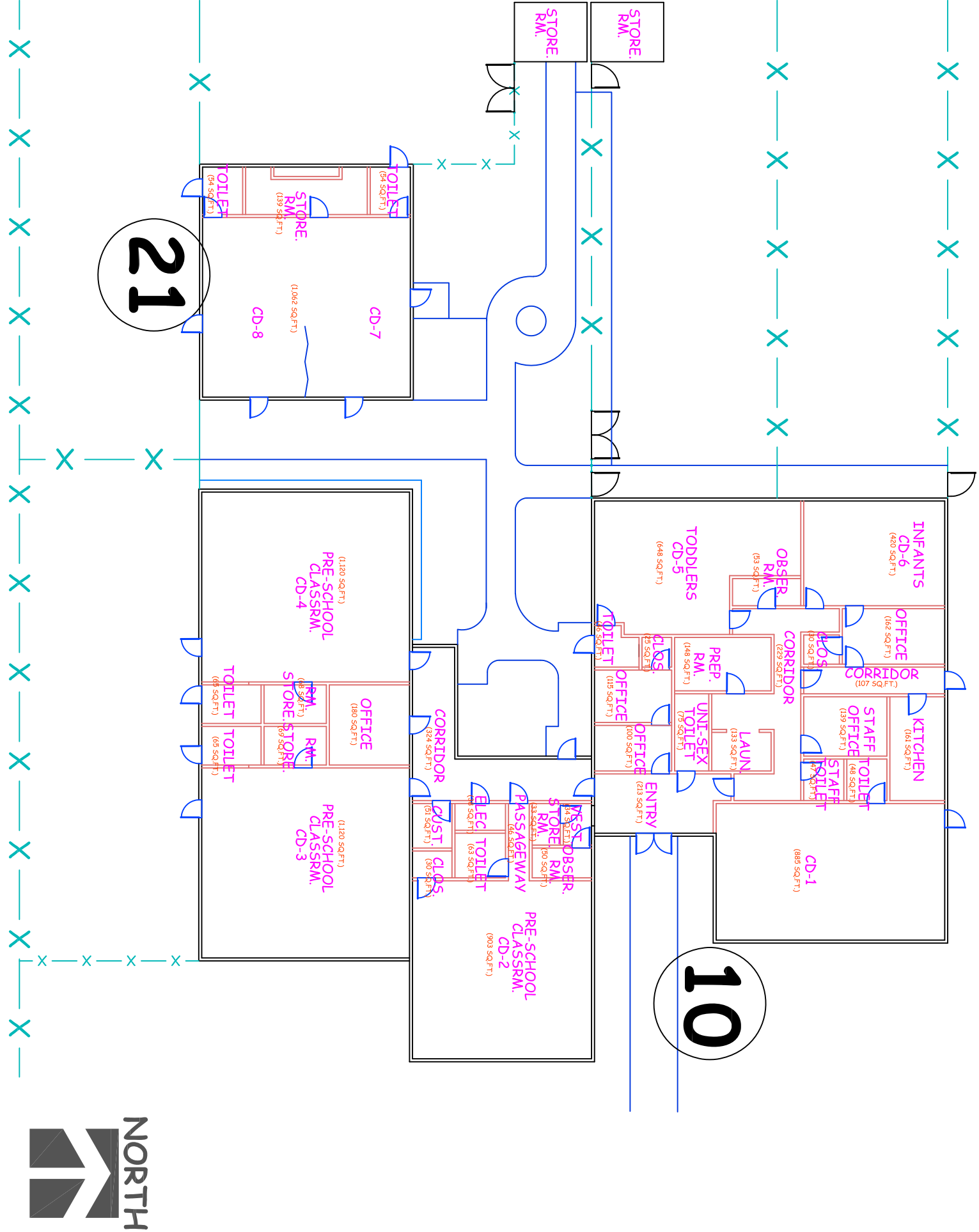
BLDG. 24A ADMINISTRATION BLDG.



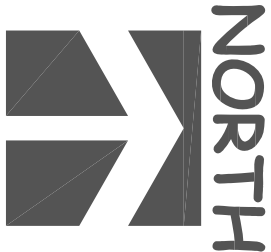
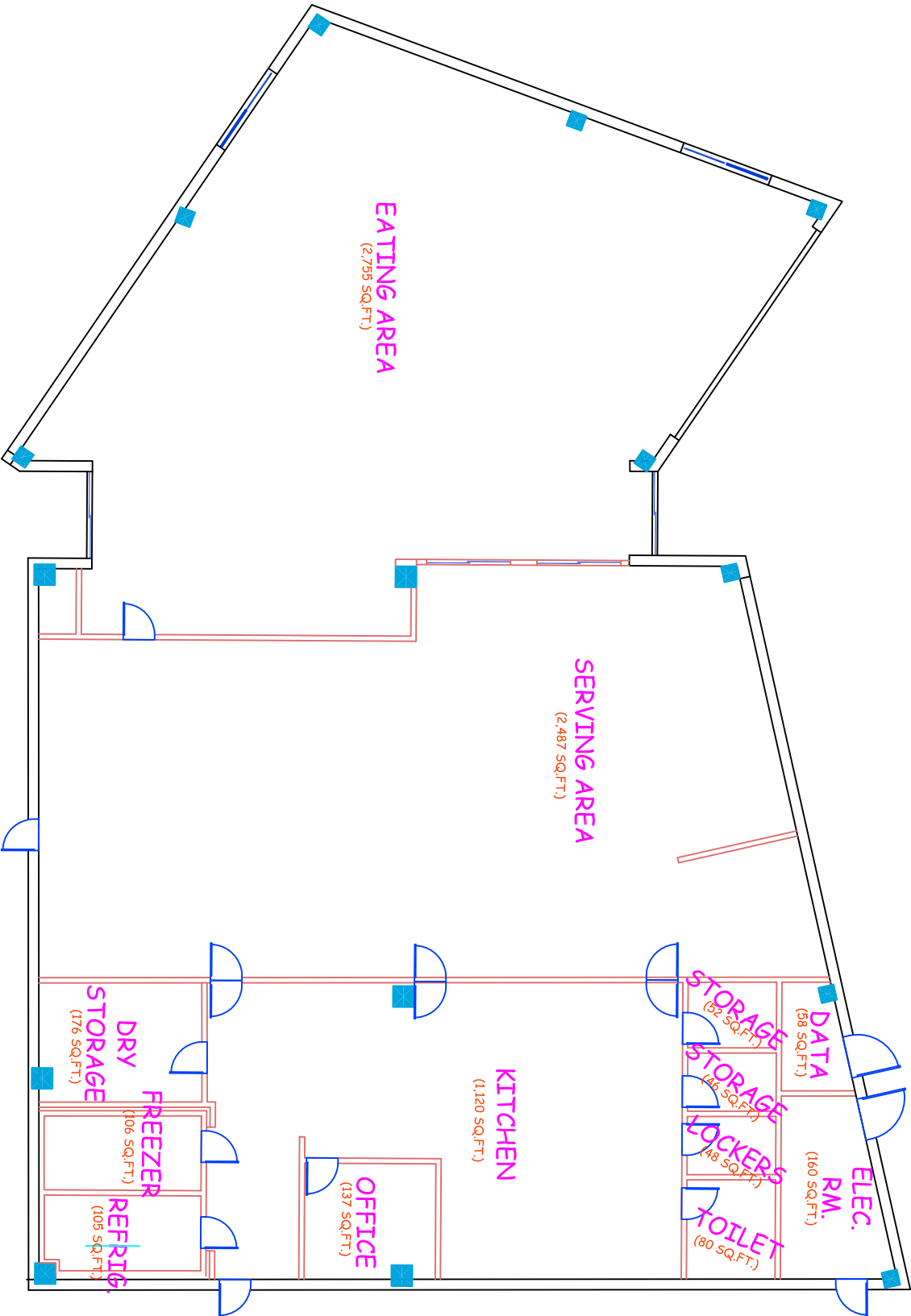
BLDG. 24A ADMINISTRATION BLDG.



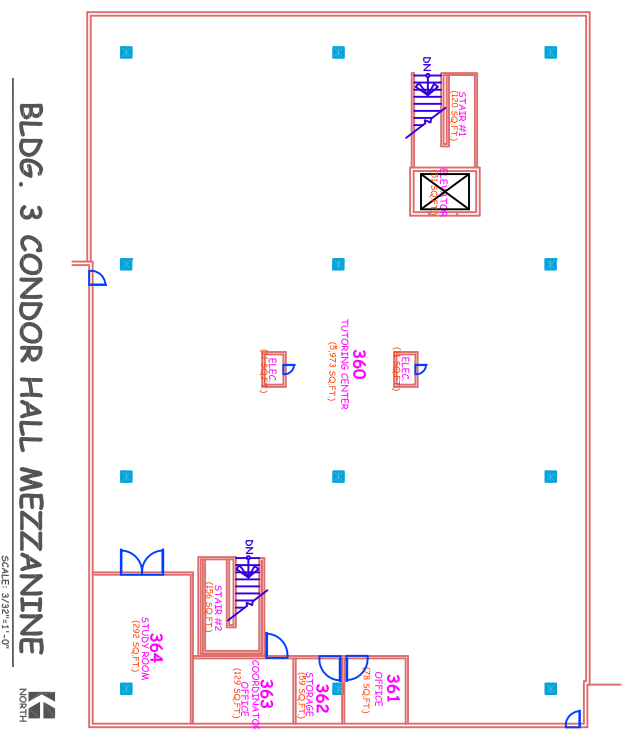
BLDG. 9 AUTO. TECH.



BLDG. 10 CDC / BLDG. 21 CDR



Bldg. 30 CONDOR CAFE



BLDG. 3 CONDOR HALL MEZZANINE

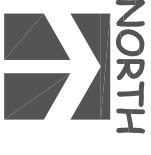
SCALE: 3/32"=1'-0"



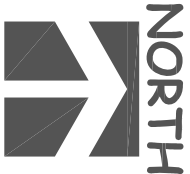
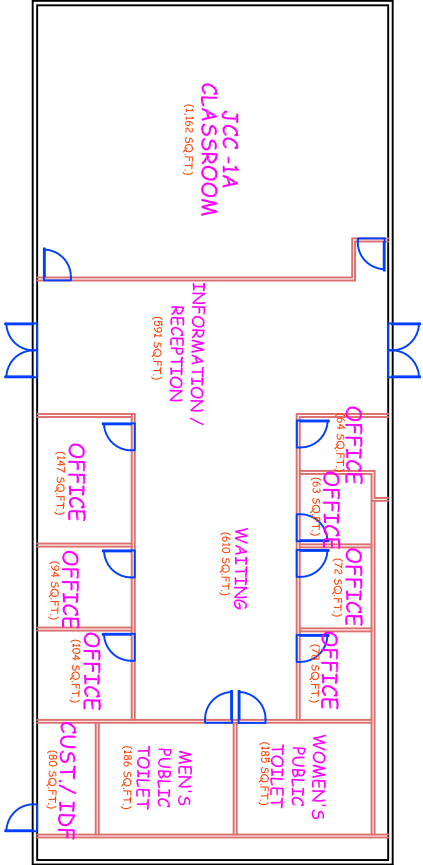
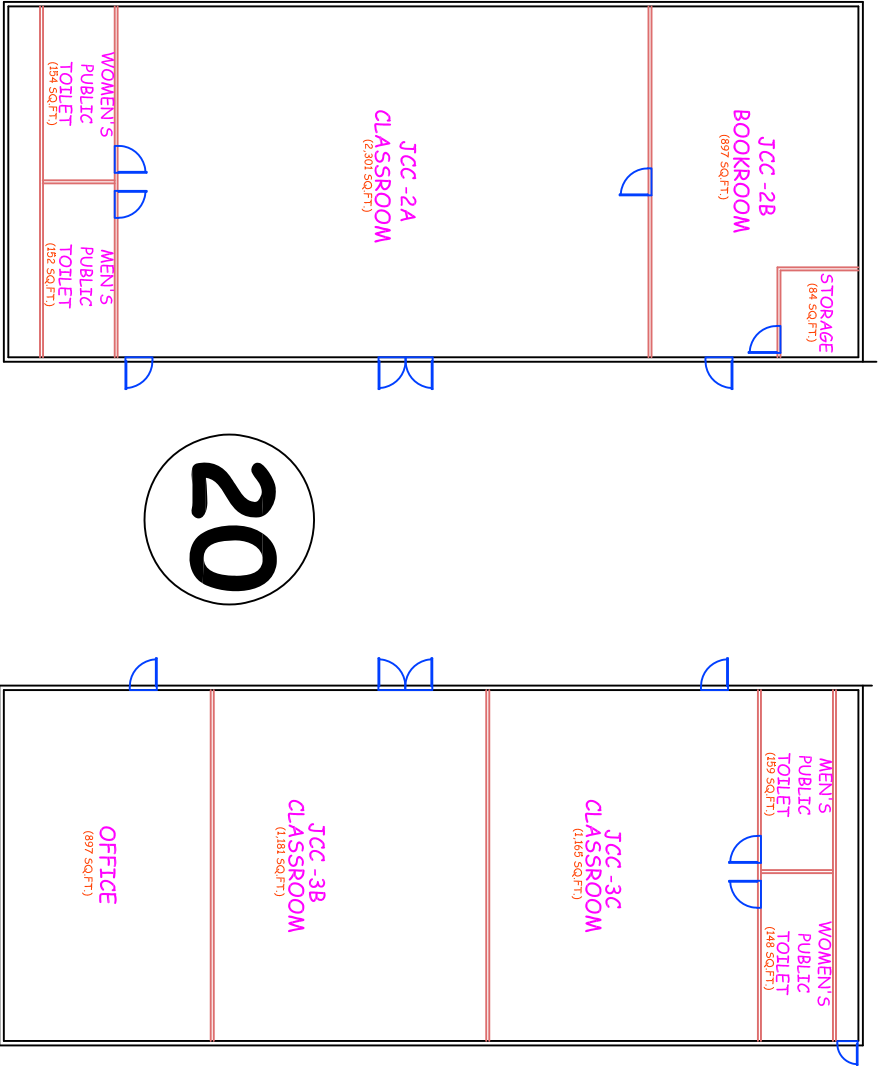
NORTH



1ST. FLOOR

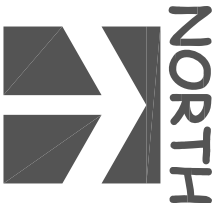
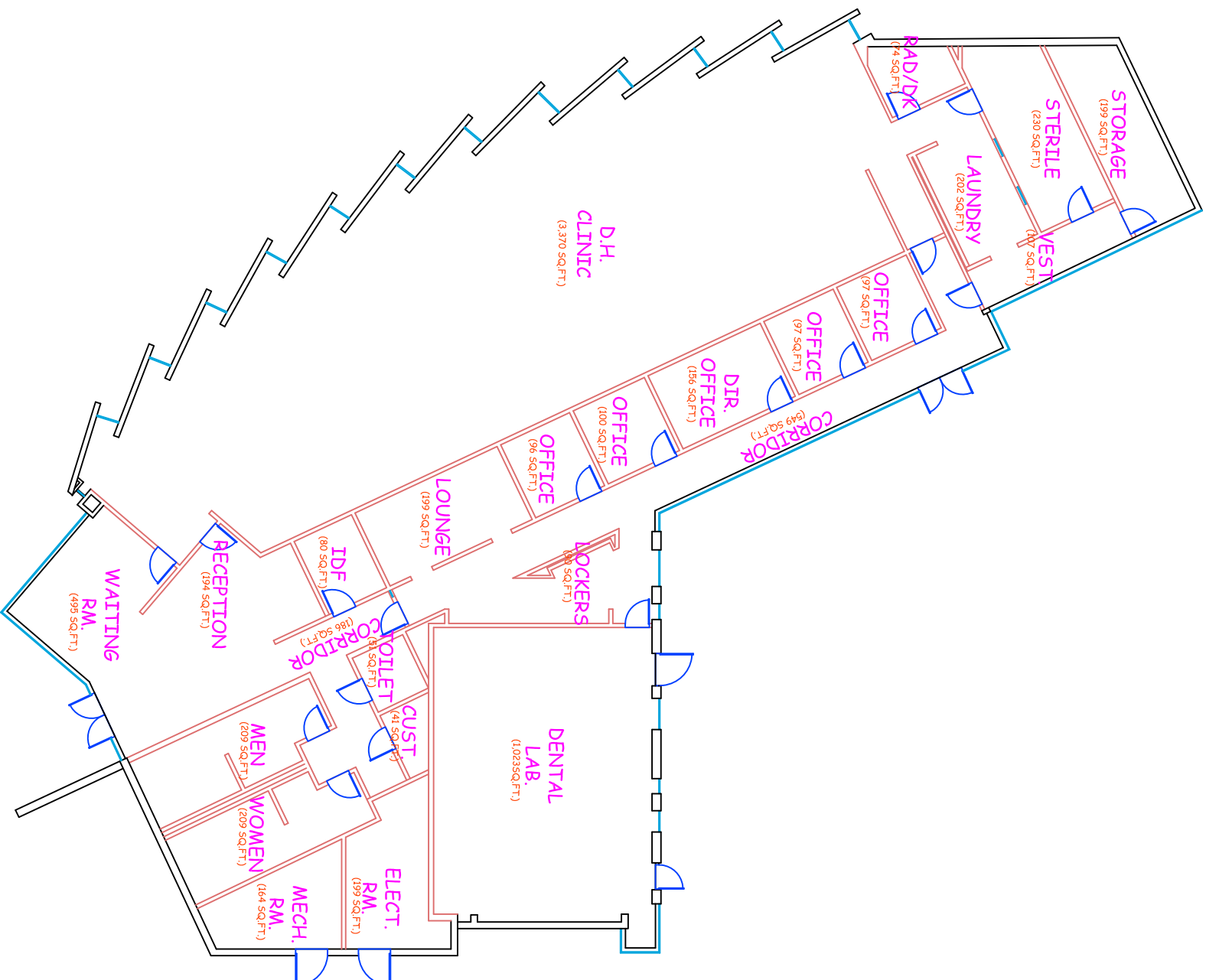


BLDG. 3 CONDOR HALL

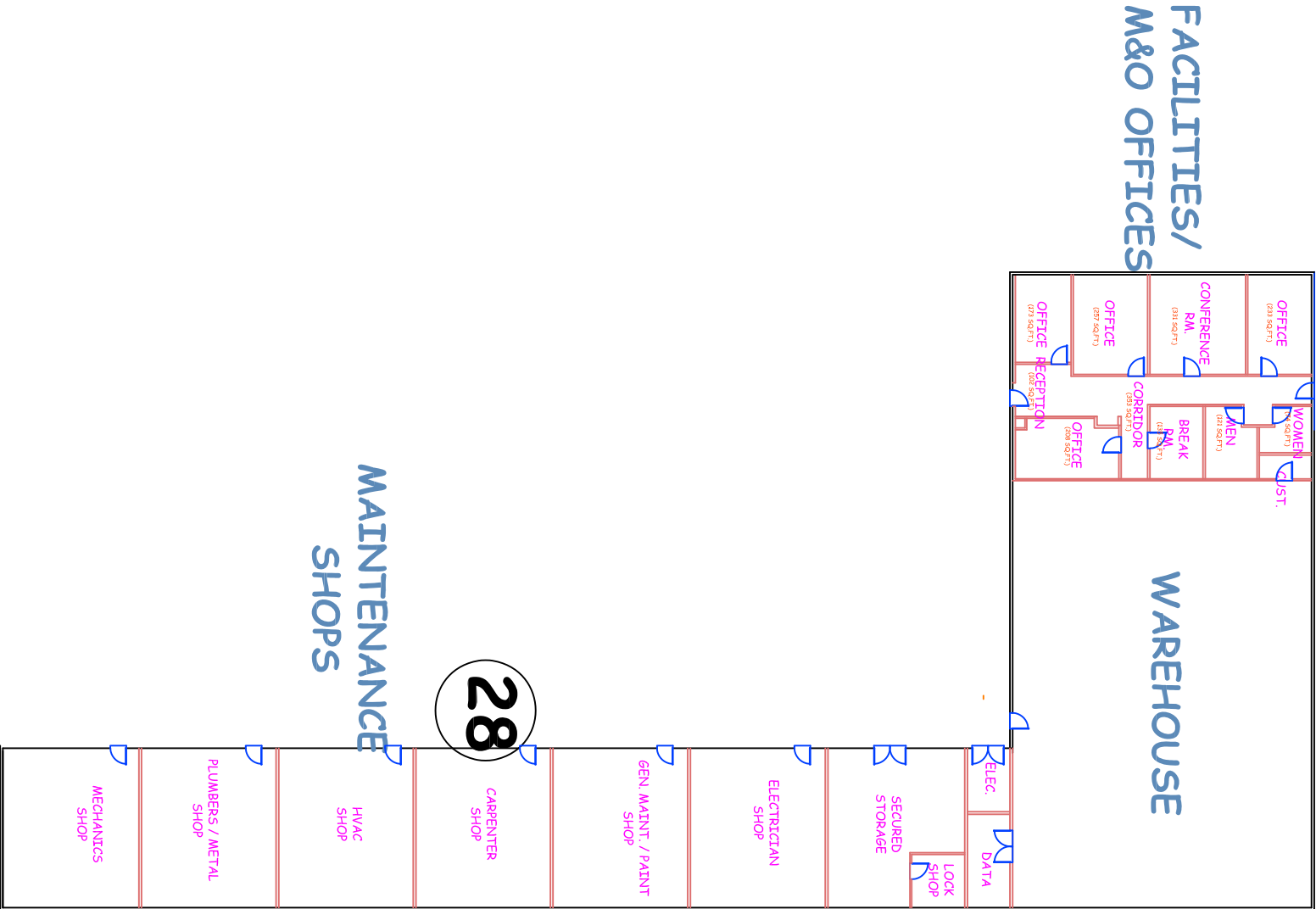


BLDG. 20 CONDOR MIDDLE

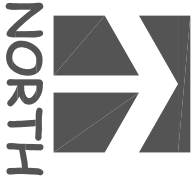
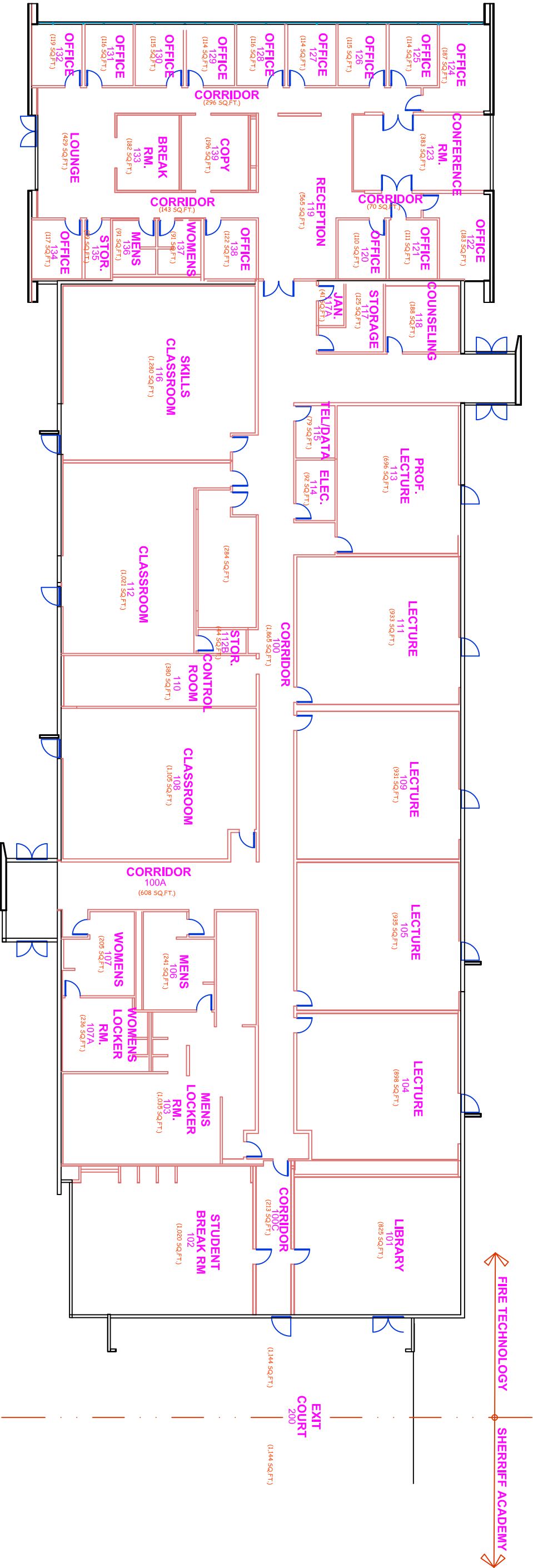
COLLEGE FLOOR PLANS



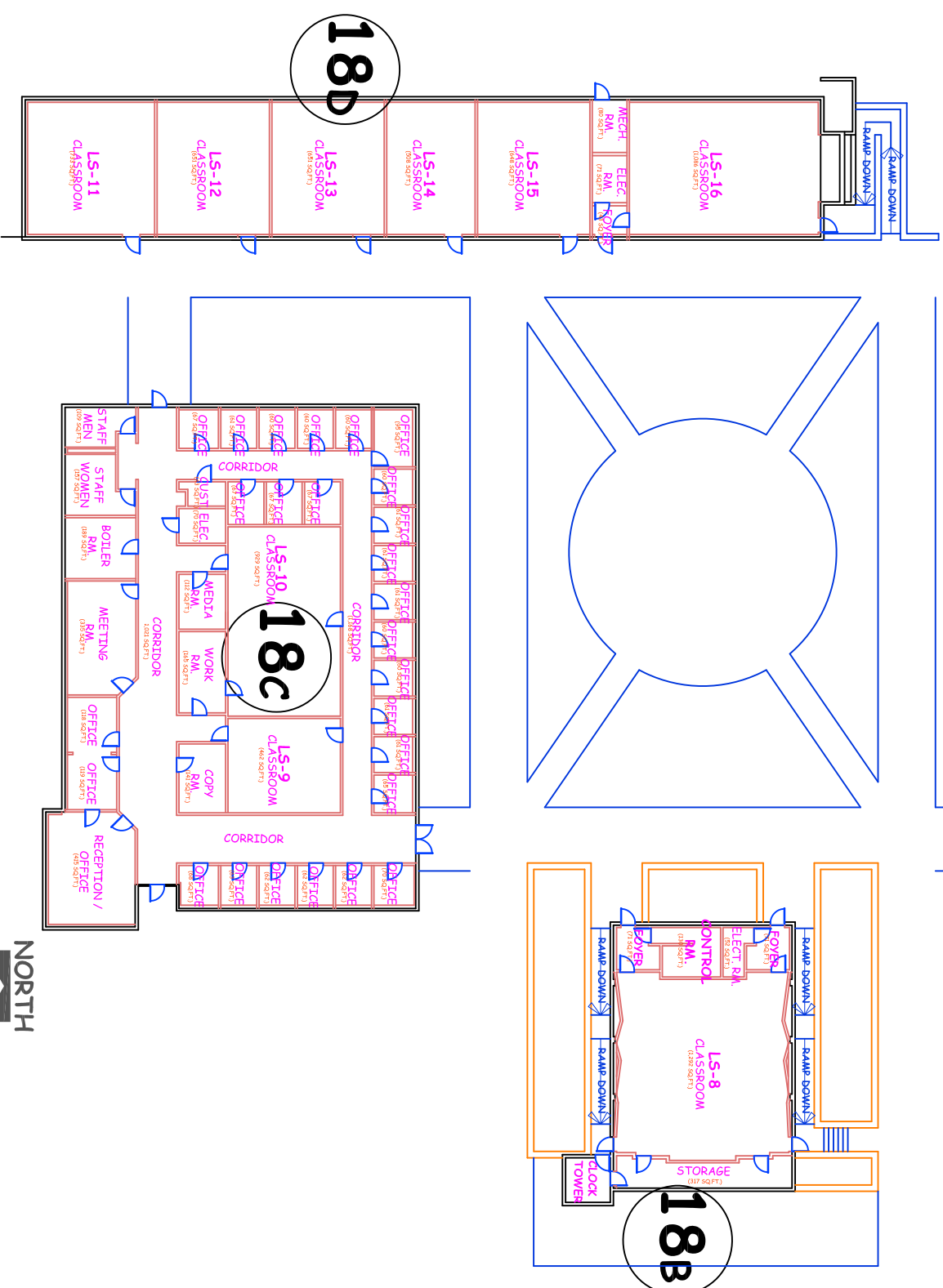
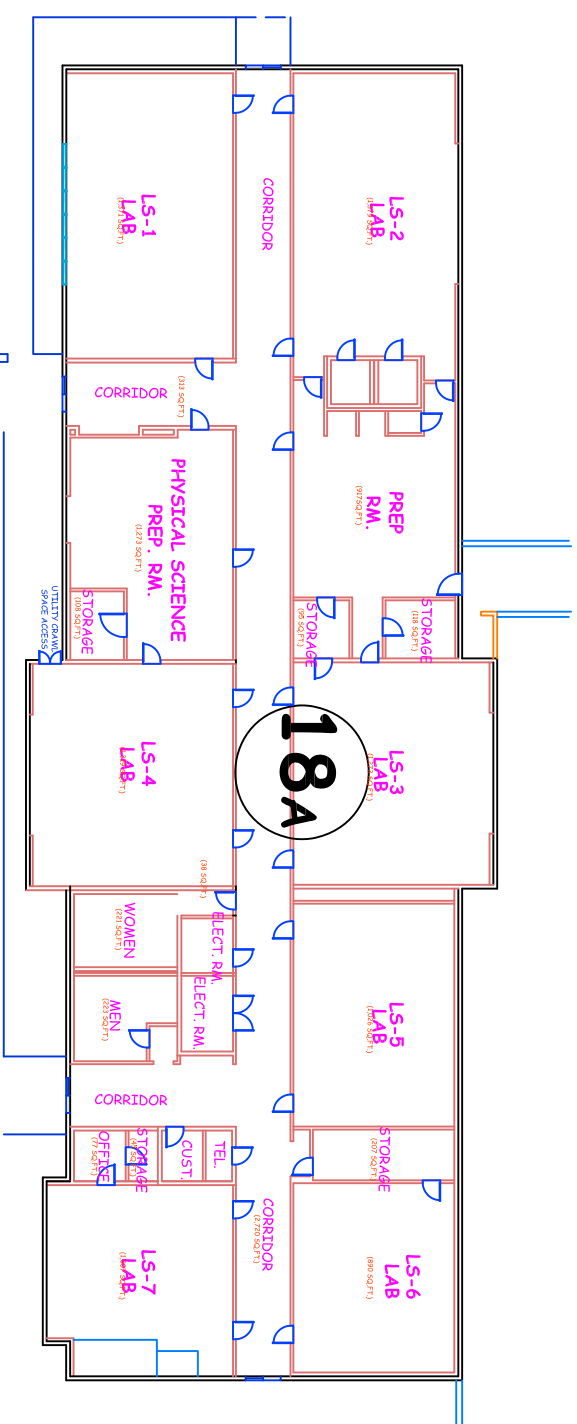
BLDG. 33 DENTAL HYGIENE BLDG.



BLDG. 28 FACILITIES, M&O & WAREHOUSE

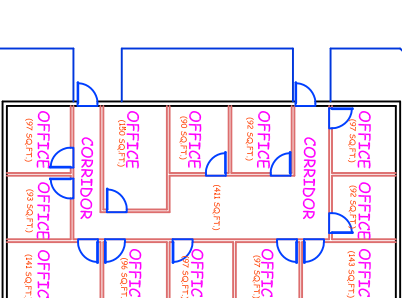
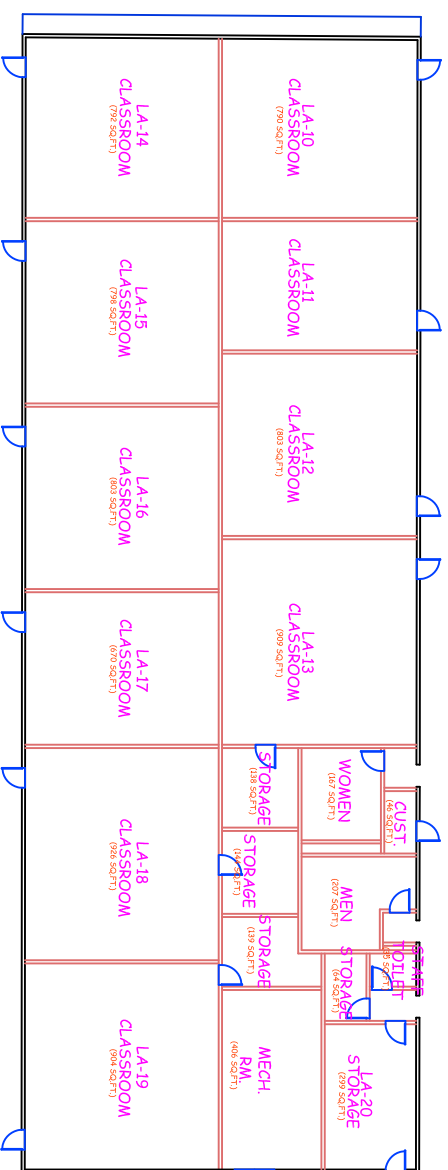
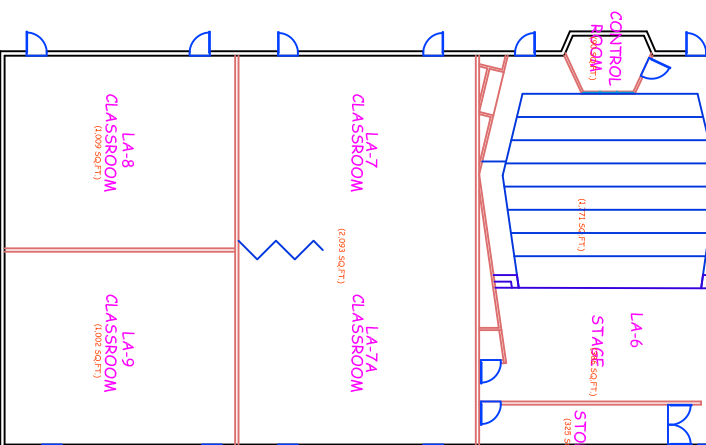
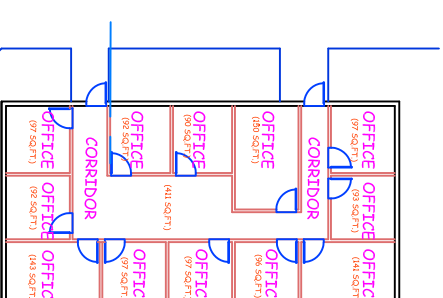
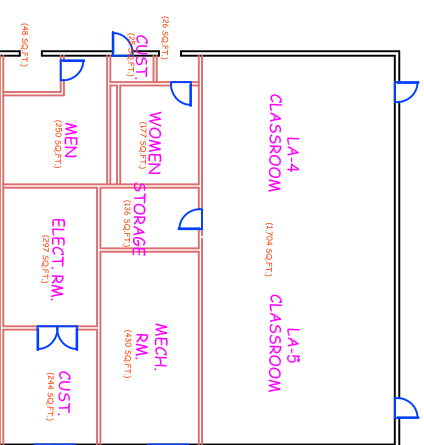
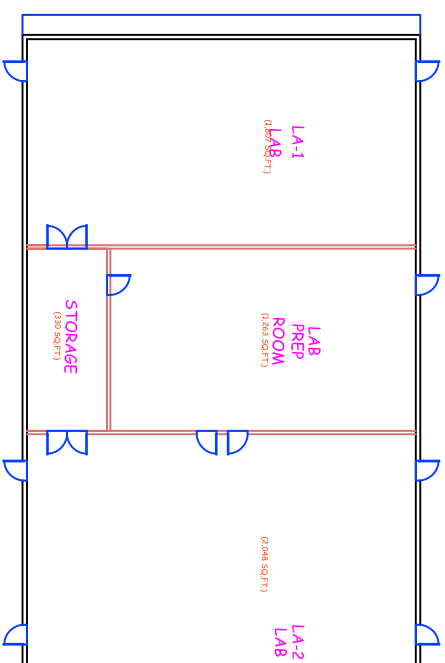


BLDG. 34 FIRE TECHNOLOGY



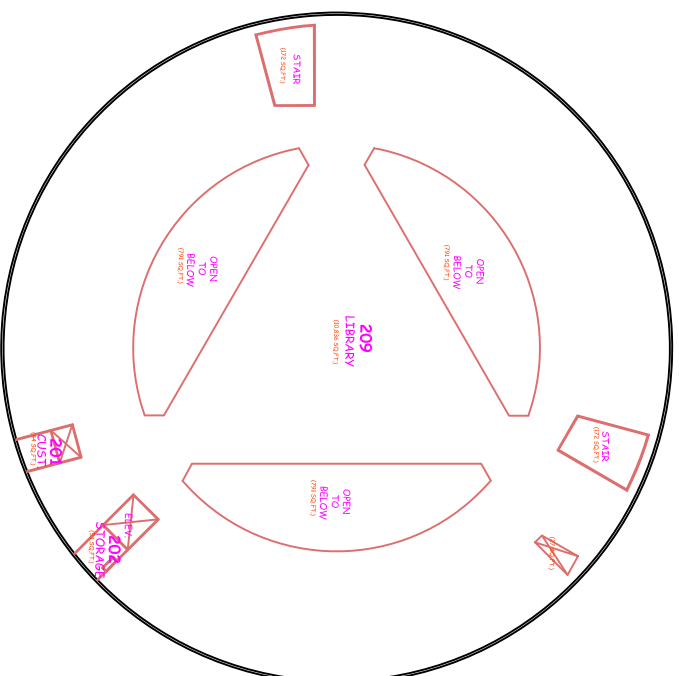
BLDG. 18 LETTERS & SCIENCES



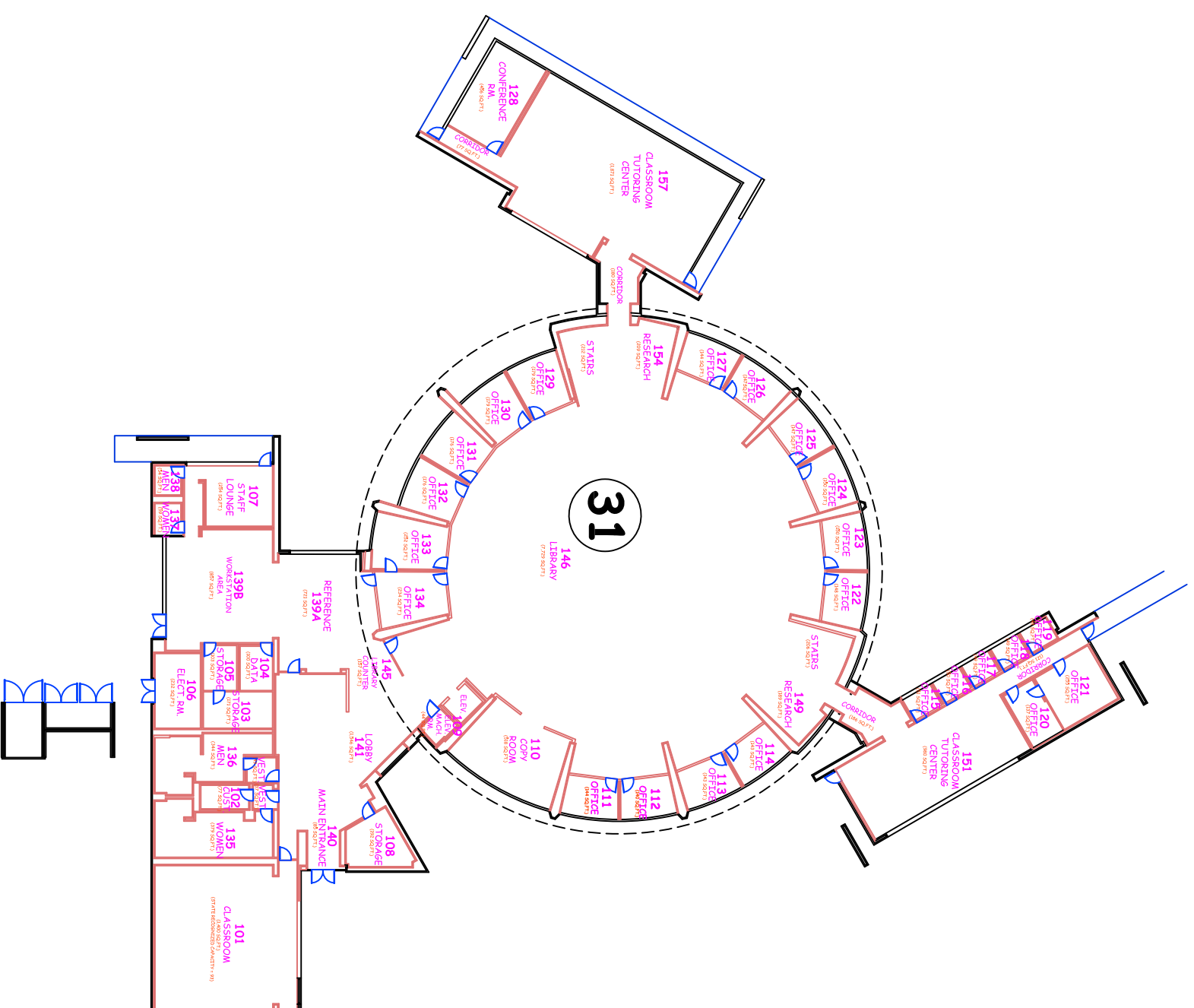


BLDG. 4 LIBERAL ARTS BLDGS. 





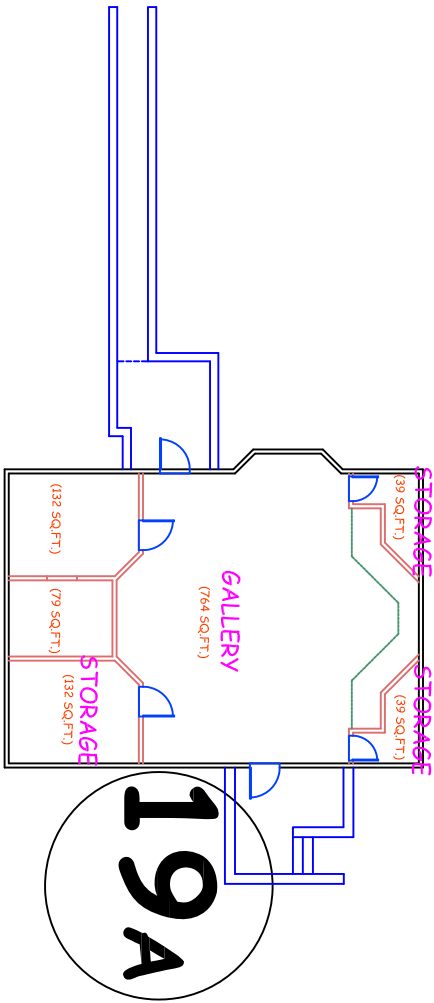
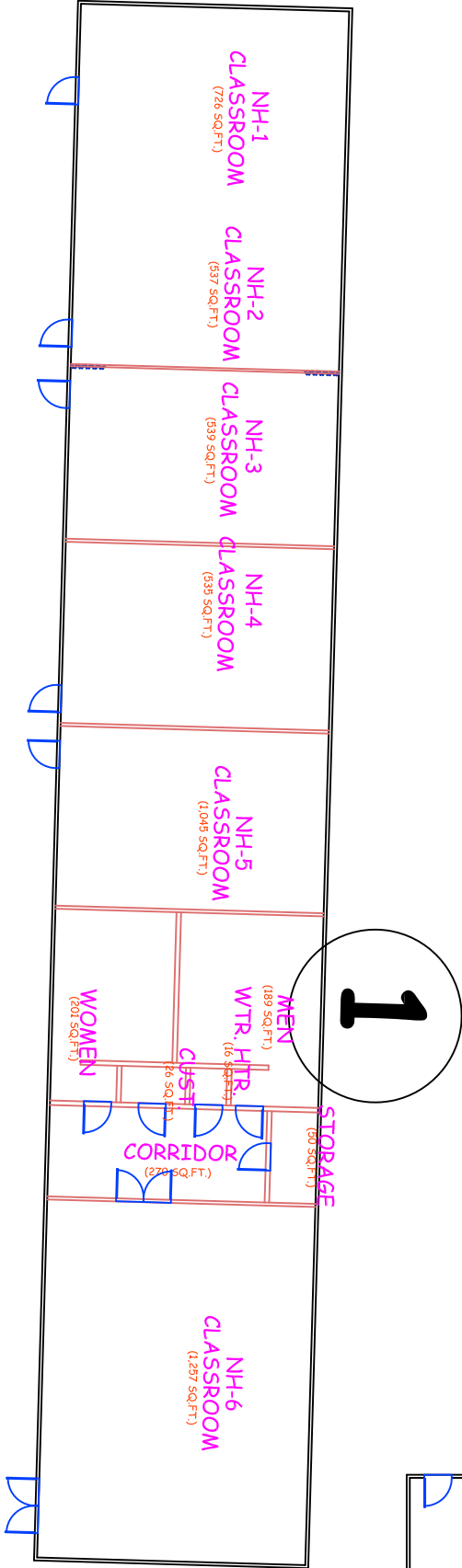
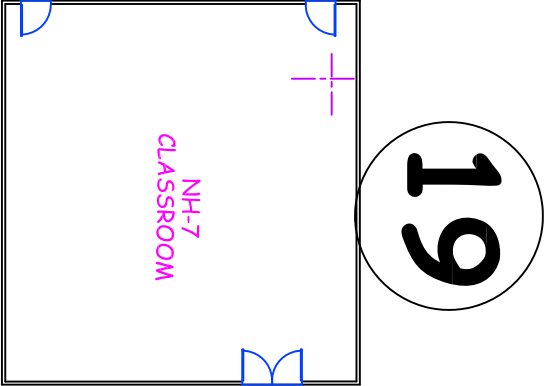
2ND. FLOOR



1ST. FLOOR

**BLDG. 31 LIBRARY, LEARNING
RESOURCE CENTER BLDG.**





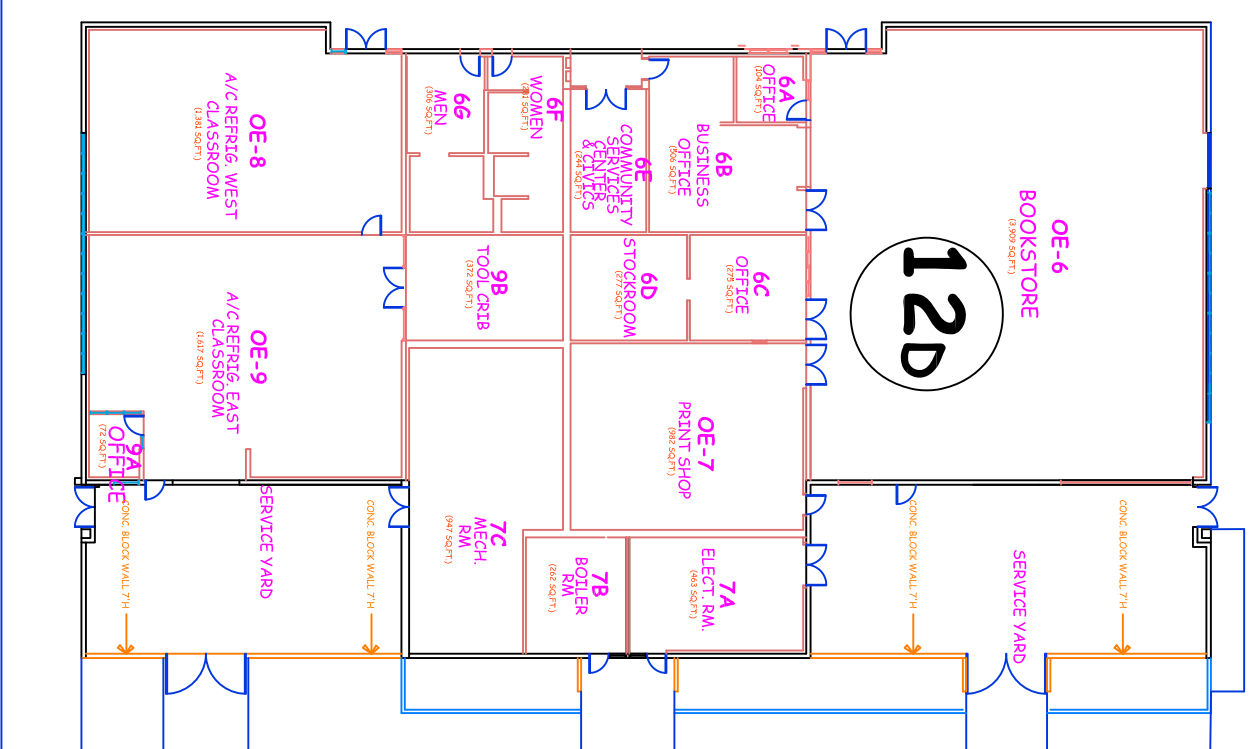
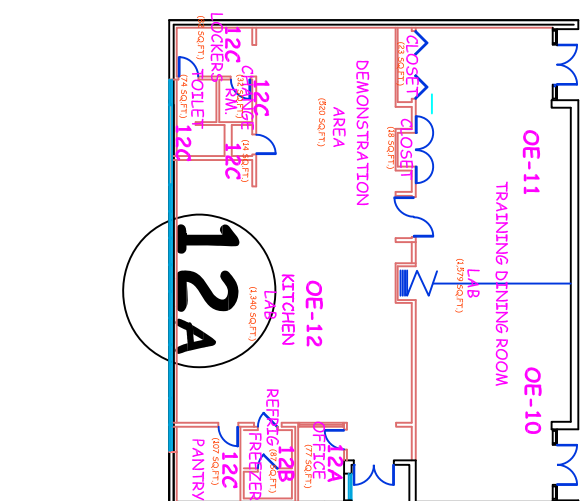
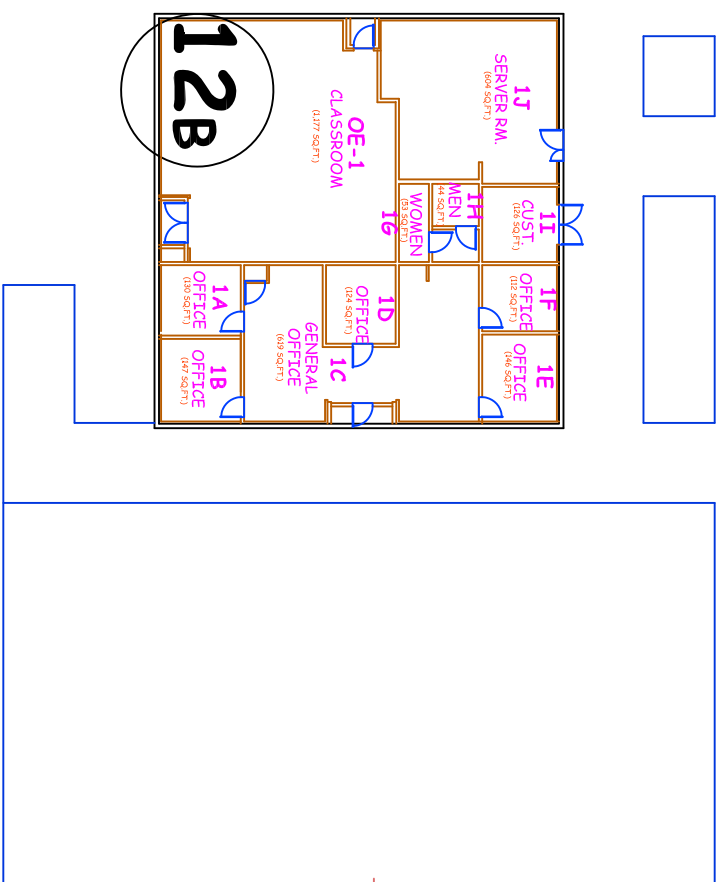
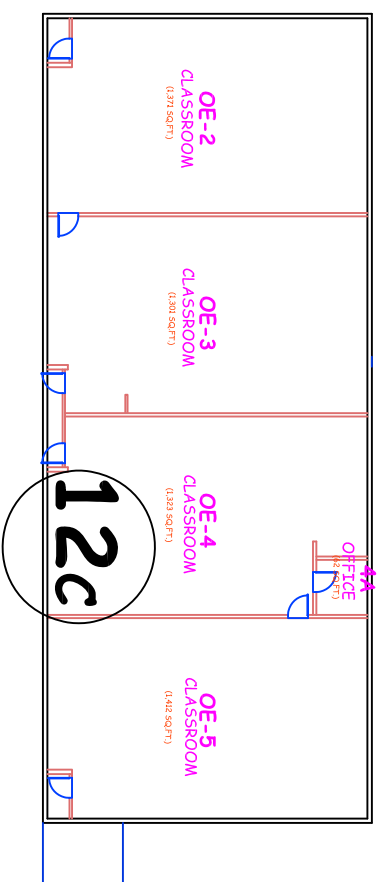
BLDG. 1 (NORTH HALL)



NORTH

BLDG. 19 (NORTH HALL-7)

BLDG. 19A (MCNISH GALLERY)



BLDG. 12 OCCUPATIONAL EDUCATION

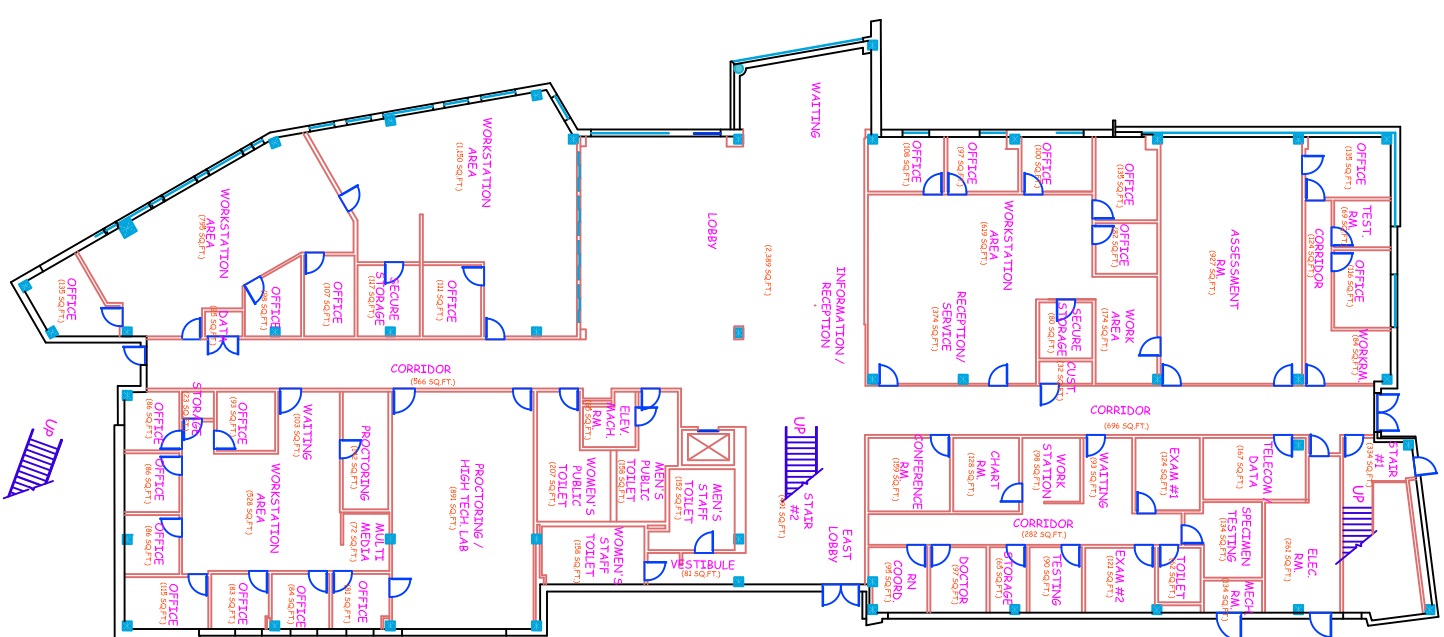
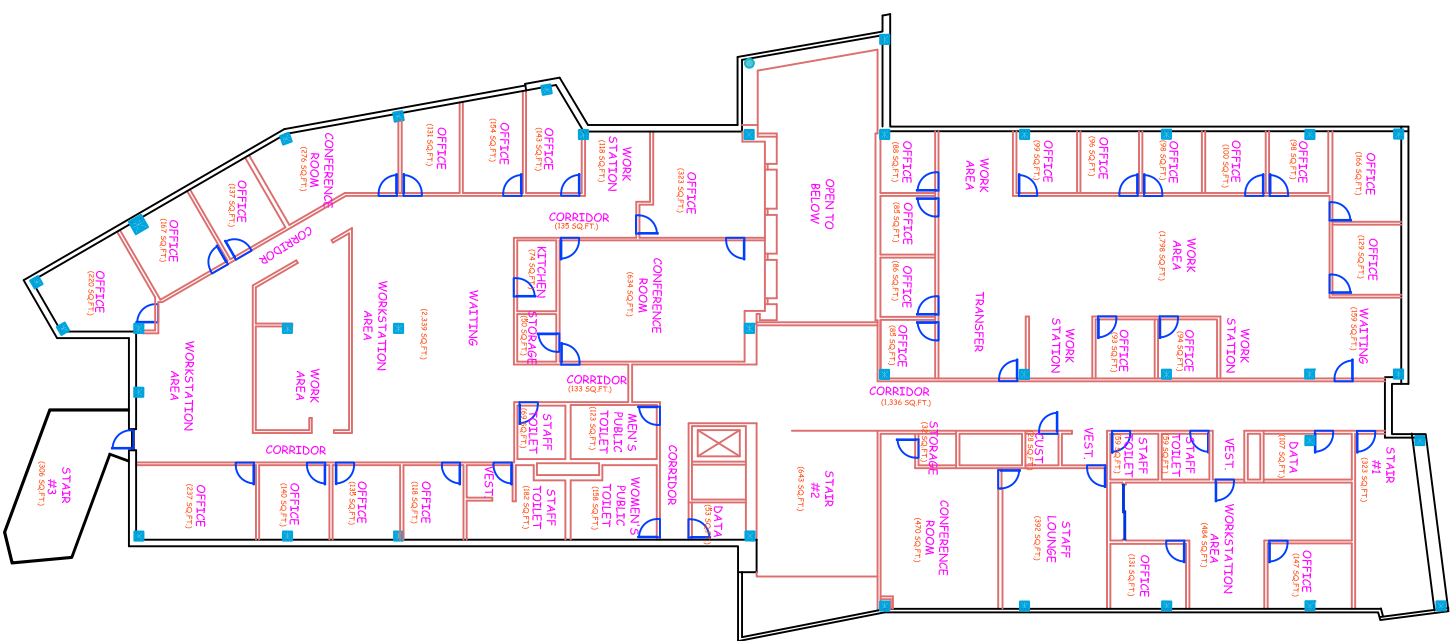


BLDG. 6 PE / ATHLETICS BLDG.

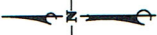
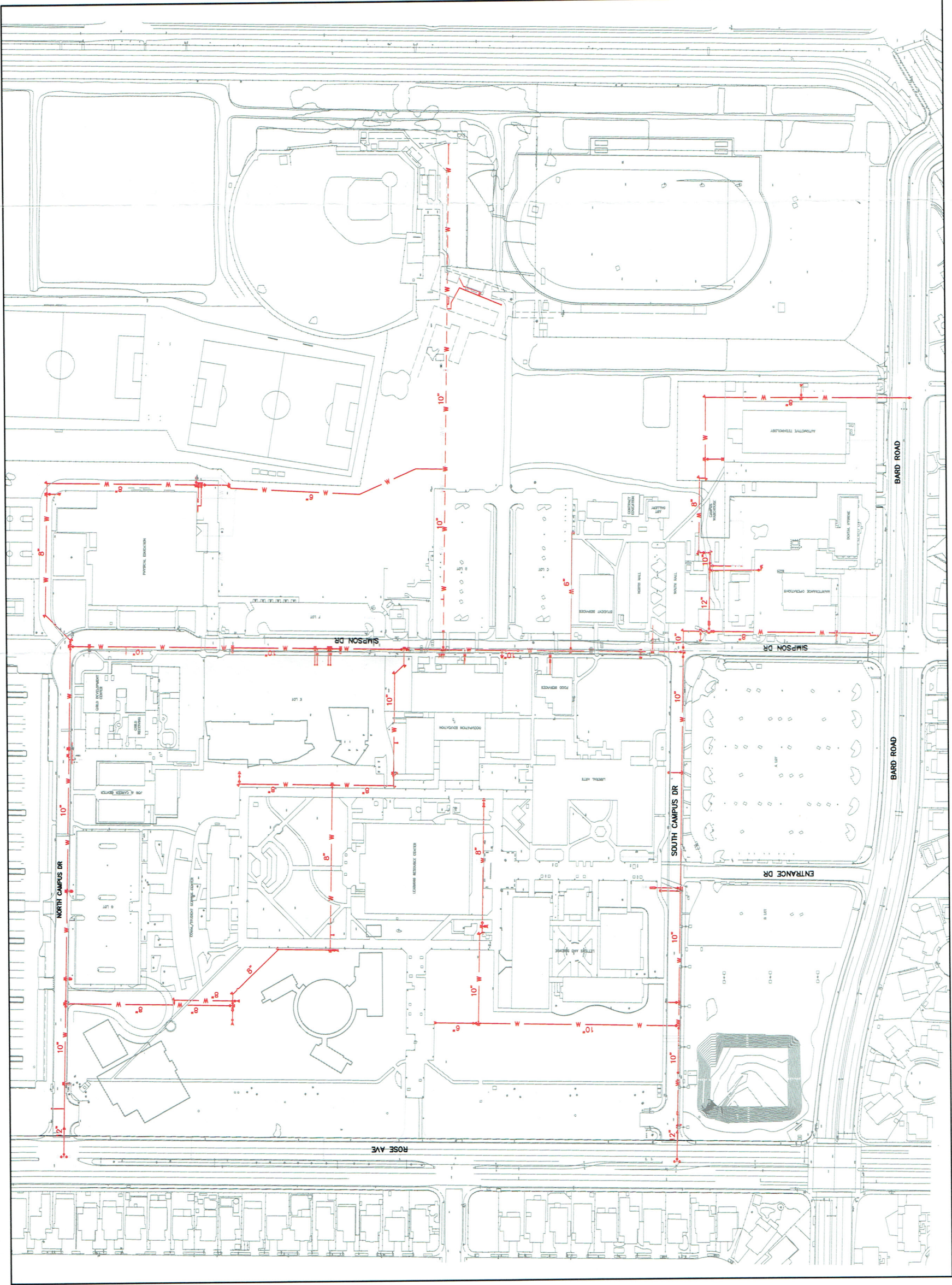




BLDG. 32 PERFORMING ARTS BLDG.



BLDG. 29 STUDENT SERVICE BLDG.



OXNARD COLLEGE WATER SYSTEM MAP

SCALE: NTS

EXHIBIT B



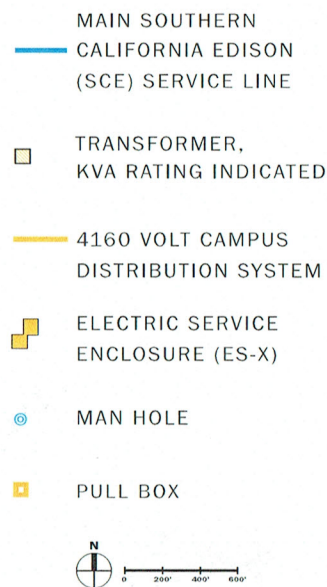
OXNARD COLLEGE CAMPUS

ADA PATHWAYS

NTS



EXISTING CAMPUS POWER DISTRIBUTION SYSTEM



EXISTING POWER DISTRIBUTION SYSTEM

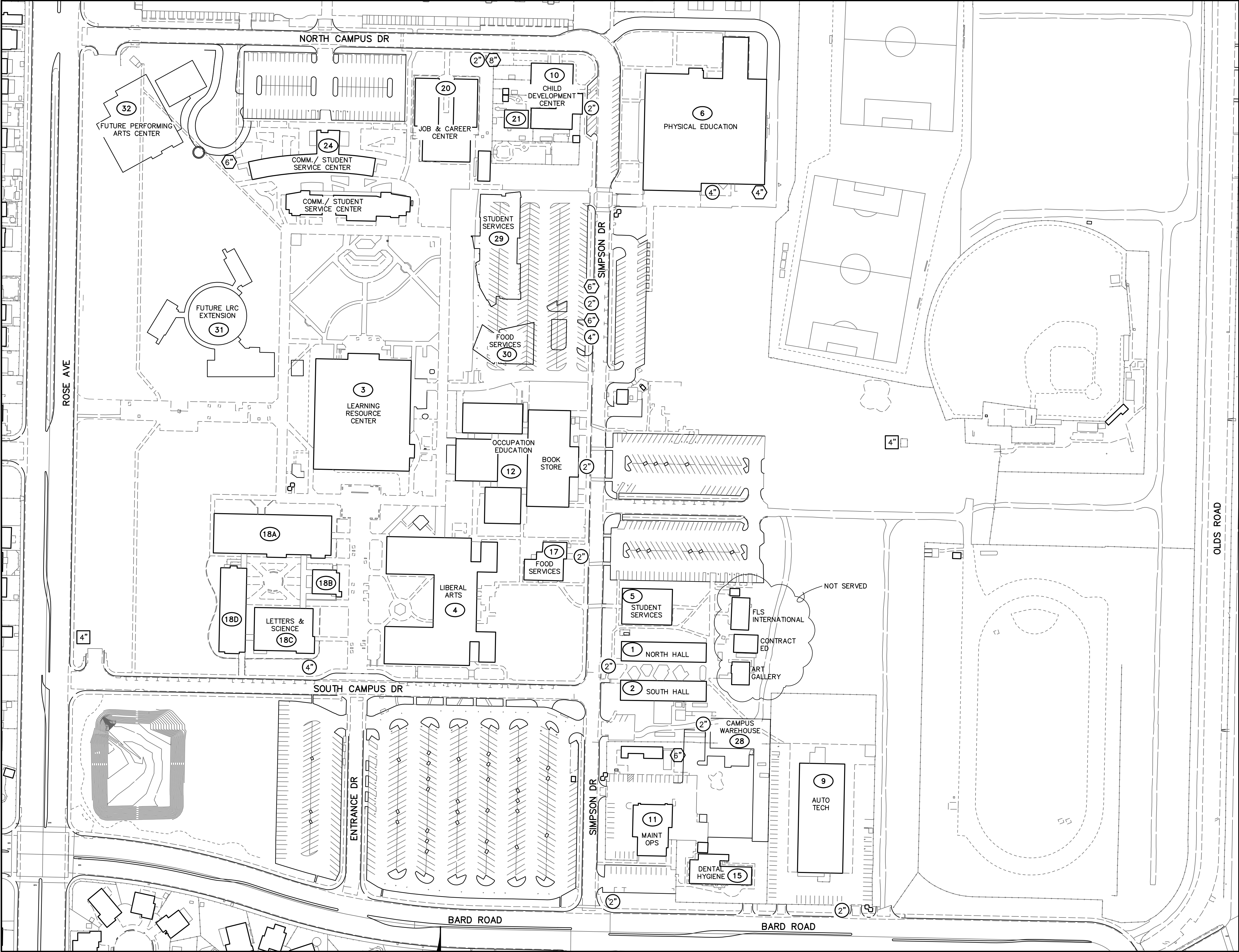
Oxnard College currently receives power from Southern California Edison (SCE) via a utility duct bank/manhole system running underground from the campus utility service building along Simpson Road to a SCE connection point in a Bard Road utility vault. At the campus utility building a SCE owned and operated 1000 KVA transformer steps voltage down to 4160Y/2400 volt (3 phase, 4 wire) for campus metering and distribution. Currently, Oxnard College's peak electrical demand is approximately 1000KVA thus equaling its capacity. As such, prior to any major expansion in campus facilities or increase in electrical demand, the existing 1000KVA service transformer should be reviewed for upgrade or replacement.

Oxnard College distributes power to various buildings at 4160 volt 3 phase via three existing medium voltage feeders and a series of eight oil filled G&W sectionalizing switches. The sectionalizing switches are housed in eight concrete block structures (ES-X; including power and communication) located around the campus. The 4160 volt system is then routed from local sectionalizing switches to oil filled transformers and low voltage distribution switchboards located at each building. The existing 4160 volt service switchboard, overcurrent protection, medium voltage feeders, and oil filled sectionalizing switches were installed in approximately 1977. The oil filled sectionalizing switches are no longer supported by the manufacturer, are considered hazardous and should be removed from the campus.

As a new building was added to the campus, the intent was to connect a new 4160 volt feeder at a local ES blockhouse sectionalizing switch and extend it to a new transformer location. The transformer stepped voltage down to the new building's utilization level, usually 480Y/277V or 208Y/120V.

A lack of funding for maintenance of the medium voltage distribution equipment including switchgear, sectionalizing switches, transformers, and cabling has left the system in need of service. An evaluation of the condition of various power system components was underway at the time of Facilities Master Plan 2004 publication. The results of the evaluations were expected to be available to decision makers within the first 6 months of 2004.

OXNARD COLLEGE METER LOCATIONS



METER SCHEDULE				
BUILDING NO.	NAME	LOCATION	METER SIZE(1,2)	ADD'L BLDGS SERVED
11	MAINT OPS	SIMPSON DR.	2"	15 (DENTAL HYGIENE)
28	CAMPUS WAREHOUSE	SIMPSON DR.	2"	—
1	NORTH HALL	SIMPSON DR.	2"	2 (SOUTH HALL); 5 (STDNT SERV)
17	FOOD SERVICES	SIMPSON DR.	2"	—
12	BOOK STORE (O.E.)	SIMPSON DR.	2"	—
30	FOOD SERVICES	SIMPSON DR.	4"	—
29	STDNT SERVICES	SIMPSON DR.	2"	—
10	CHILD DEV	SIMPSON DR.	2"	21
6	PHYSICAL ED.	SIMPSON DR.	4"	—
18	LETTERS & SCIENCE — BLDG C	SO. CAMPUS RD	4"	4 (LIBERAL ARTS); 18 (BLDGS A,B,D); 3 (LRC)
20	CAREER CENTER	NO. CAMPUS RD	2"	24 (COMM/STDNT)
9	AUTO TECHNOLOGY	BARD RD	2"	—
—	—	SO. CAMPUS/ ROSE AVE.	4" IRR	—
—	—	CENTRAL CAMPUS RD, NEAR BASEBALL FIELD	4" IRR	—

NOTES:
1. ALL 2" METERS ARE ZURN WILKINS, MODEL 975XL.
2. ALL 4" METERS ARE ZURN WILKINS, MODEL 350ADA.

FIRE DCDA SCHEDULE					
BUILDING NO.	NAME	LOCATION	SIZE	MAKE	MODEL
28	CAMPUS WAREHOUSE	SIMPSON DR.	6"	ZURN WILKINS	350DA
30	FOOD SERVICES	SIMPSON DR.	6"	ZURN WILKINS	350ADA
29	STDNT SERVICES	SIMPSON DR.	6"	ZURN WILKINS	350ADA
6	PHYSICAL ED.	SIMPSON DR.	4"	WATTS	750DC
20(1)	CAREER CENTER	NO. CAMPUS RD	8"	AMES	3000SS
24(1)	COMM/STDNT SERVICE CTR	NO. CAMPUS RD	6"	ZURN WILKINS	350ADA

NOTE:
1. FIRE DCDA'S LOCATED NEAR BUILDINGS 20 & 24 ARE LOOPED AND SERVE BUILDINGS 10, 20, 21, & 24.

LEGEND:

- 2" METER SIZE (DOMESTIC WATER)
- 4" METER SIZE (IRRIGATION)
- 4" FIRE LINE
- 11 BUILDING NUMBER

KEY MAP

SCALE: 1"=100'